

Product News



0802-1036



0802-1040



0802-1037



0802-1034



STEP-UP SEATS

- Saddlemen has collaborated with top freestyle performers to create the new T-sport-inspired step-up lattice stitch (LS) or tuck-n'-roll (TR) seats
- LS seats infuse old-school lattice stitch retro styling with a modern twist
- TR seats feature true tuck-n'-roll styling
- High lumbar keeps the rider locked into the seat
- Features Saddlemen's Ultra-Foam, which is formulated to provide a perfect balance of rigidity and user compliance with integrated GelCore™ technology
- Whisper-grain SaddleHyde™ cover
- Installs easily with all necessary mounting hardware and instructions included



0802-1373

FOR 18-22 FXLR/FXLRS/FXLRST/FLSB

PART #	DESCRIPTION	PART #	DESCRIPTION
BROWN		BLACK	
0802-1041	Full LS	0802-1040	Full LS
0802-1036	Front LS	0802-1035	Front LS
0802-1038	Rear LS	0802-1037	Rear LS
		0802-1034	TR
		0802-1373	Front TR, rear LS



SOCKET-HEAD HANDLEBAR RISER KITS

- Chrome-plated risers are fully machined from forged aluminum
- 25,4 mm (1") diameter clamping area accepts 1/2"-20 bolts
- Sold in pairs

PART #	DESCRIPTION	PART #	DESCRIPTION	PART #	DESCRIPTION
DS290220	7,6 cm (3")	DS290221	10,1 cm (4")	DS290222	15,2 cm (6")



FORGED ALUMINUM HANDLEBAR RISERS

- These risers are forged from 6061-T6 aluminum for superior strength
- Drilled and tapped for 1/2"-13 riser bolts (bolts sold separately)
- CNC-machined for precision fit on handlebars with a 25,4 mm (1") diameter clamping area
- Designed to fit applications with 89 mm (3,5") on-center mounts and will accept most OEM-style top clamps with offset mount holes
- Sold in pairs

PART #	DESCRIPTION
STRAIGHT RISERS	
CHROME	
0602-0398	43 mm (1,75")
0602-0399	89 mm (3,5")
0602-0400	14 cm (5,5")
0602-0401	16,5 cm (6,5")
0602-0402	20,5 cm (8")
BLACK	
0602-0403	43 mm (1,75")
0602-0404	89 mm (3,5")
0602-0405	14 cm (5,5")
0602-0406	16,5 cm (6,5")
0602-0407	20,5 cm (8")



PART #	DESCRIPTION
PULLBACK RISERS (25,4 MM (1") PULLBACK)	
CHROME	
0602-0408	89 mm (3,5")
0602-0409	11,5 cm (4,5")
0602-0410	14 cm (5,5")
0602-0411	16,5 cm (6,5")
0602-0412	21,5 cm (8,5")
BLACK	
0602-0413	89 mm (3,5")
0602-0414	11,5 cm (4,5")
0602-0415	14 cm (5,5")
0602-0416	16,5 cm (6,5")
0602-0417	21,5 cm (8,5")



1803-1512



0602-0517



0602-0809



DS-290112



0602-0352



0602-0810

BUFFALO RISERS

- Risers are machined from billet aluminum
- Fit any handlebars that have a 25,4 mm (1") diameter in the clamping area and have 32 mm (1 1/4") riser diameter to complement the style of 32 mm (1 1/4") diameter handlebars
- Accept Buffalo handlebar clamps or OEM-style handlebar clamps with offset mounting holes
- Pullback risers have 25 mm (1") of pullback
- All risers use 1/2"-13 riser bolts; available separately

PART #	DESCRIPTION
STRAIGHT RISERS	
CHROME	
DS-290113	38 mm (1 1/2") tall
1803-1511	76 mm (3") tall
DS-290111	11,5 cm (4 1/2") tall
1803-1512	15 cm (6") tall
0602-0516	25,5 cm (10") tall
0602-0518	30,5 cm (12") tall
GLOSS BLACK	
0602-0350	38 mm (1 1/2") tall
0602-0351	76 mm (3") tall
0602-0520	10 cm (4") tall
0602-0521	15 cm (6") tall
0602-0517	25,5 cm (10") tall

PART #	DESCRIPTION
STRAIGHT RISERS (CONT)	
GLOSS BLACK (CONT)	
0602-0519	30,5 cm (12") tall
FLAT BLACK	
0602-0809	38 mm (1 1/2") tall
PULLBACK RISERS (25,4 MM (1") PULLBACK)	
CHROME	
DS-290112	14 cm (5 1/2") tall
1803-1513	23 cm (9") tall
GLOSS BLACK	
0602-0352	14 cm (5 1/2") tall
0602-0522	24 cm (9 1/2") tall
FLAT BLACK	
0602-0810	23 cm (9") tall


**VANCE
HINES**


FUELPAK FP4

- Built from the ground up, Android and iPhone apps feature a new rider interface and are easier to navigate and use than ever before
- Live Data in the FP4 app has been upgraded with a whole new look and an additional gauge to track more crucial data while riding
- All-new Performance Data feature allows rider to record their ride, look at all available sensors in the created chart and see a map of their ride recorded with their phone's onboard GPS
- Made of polycarbonate plastic/Bluetooth low energy, FP4 hardware smaller and thinner than the previous generation electronics product
- Unit's LEDs have been simplified so the rider knows exactly what is happening between the FP4 and the rider's motorcycle
- All necessary hardware and Instructions included


PART #
DESCRIPTION
1020-3962

For 14-20 FLHT/FLHX/FLTRX/S/FLTRU/FLTRK/FLHT, 15-20 FLRT, 11-20 Softails, 12-17 Dynas (excluding 11-13 CVO Softails) 12-17 Dynas, 14-22 XL Sportster models (except 21-22 Sportster S/RH1250S and 22 Nightster RH975) and 15 XG500/750/750A)


1010-2933

1010-2934
RINEHART
RACING

MOTO SERIES 90° VELOCITY AIR CLEANERS

- Forward-facing 90° intake maximizes air intake and performance
- Design and angle allow for increased airflow and more clearance for your knee for a more comfortable riding experience
- Water resistant, eliminating the need for a water sock in most cases

PART #
DESCRIPTION
FOR 17-22 TOURING AND 18-19 SOFTAIL
1010-2933
Black
1010-2934
Chrome



DYNOJET

The Pan America is taking riders on all sorts of new on- and off-road adventures. Make sure your bike is ready with accessories from Dynojet. Axle sliders, chain guards, chain adjusters, levers and more. Improve your bike's style and up the impact protection before your next adventure ride with accessories from Dynojet.



IGNITION COIL GUARD

- Protects the ignition coil in the event of a tip over
- Made from 6061-T6 aluminum
- Hard anodized in stealth gray finish
- Easy installation

PART #	DESCRIPTION
2102-0440	For 21-22 RA1250/1250S models



CHAIN GUARD

- Billet aluminum guard deflects rocks and shields the drive system from impacts which would derail the chain
- Constructed of 6061-T6 aluminum and reinforced between the tabs
- Hard anodized stealth gray finish
- Made in the U.S.A.

PART #	DESCRIPTION
1202-0166	For 21-22 RA1250/1250S models

0214-2139



0214-2140



AXLE SLIDER KITS

- Constructed of high-quality acetal plastic material to keep the axle protected in case of a fall or if the terrain adds rocky ruts to your path
- Designed to hold tight sealing inside your axle, keeping dust and debris at bay
- Easy, no-tool assembly
- Sold as a set, including right/left pair

FOR 21-22 RA1250/1250S MODELS

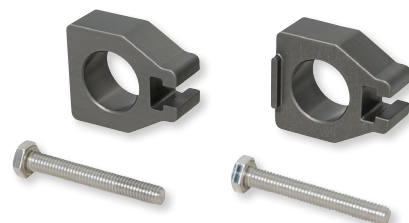
PART #	DESCRIPTION
0214-2139	Front
0214-2140	Rear



BRAKE PEDAL EXTENDER

- Adds height to the brake pedal for a more comfortable standing position
- Made from 6061-T6 aluminum
- Hard anodized in stealth gray finish
- Made in the U.S.A.

PART #	DESCRIPTION
1610-0651	For 21-22 RA1250/1250S models



CHAIN BLOCK ADJUSTERS

- Replaces the stock chain adjusters
- Made of 6061-T6 aluminum
- Captures the nut on the left-hand side
- Hard anodized in stealth gray finish

PART #	DESCRIPTION
1231-1568	For 21-22 RA1250/1250S models



SIDESTAND SWITCH GUARD

- Protects the vulnerable sidestand switch
- Made from 6061-T6 aluminum
- Hard anodized in stealth gray finish
- Made in the U.S.A.

PART #	DESCRIPTION
0510-0628	For 21-22 RA1250/1250S models



REAR BRAKE RESERVOIR GUARD

- Protects the vulnerable brake reservoir on the right-hand side of the bike
- Made from 6061-T6 aluminum
- Hard anodized in a stealth gray finish
- Made in the U.S.A.

PART #	DESCRIPTION
1731-0770	For 21-22 RA1250/1250S models



1621-1110



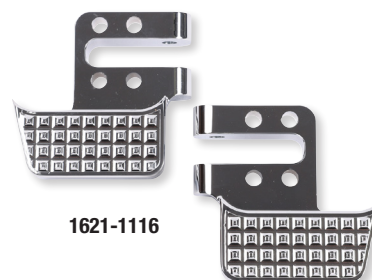
1621-1111



1621-1112



1621-1114



1621-1116

APEX FLOORBOARDS

- Designed with maximum ground clearance without sacrificing comfort
- Fit perfectly over stock HD mounts
- Constructed from 6061 billet aluminum
- 10" L and 4,2" W at widest point
- Machined deleon plastic scrape plate

- Optional lift kit and tail extension available separately
- Lift kit increases ground clearance by 0,5"
- Tail extension increases length by 1,2" and gives a 5° angled tail to the back of the floorboards

PART #	DESCRIPTION
FOR 99-22 FLHT/FLHR/FLHX/FLTR/FLTRU/FLTRK/FLTRX, 09-13 H-D FL TRIKE, 00-17 FLST AND 12-16 FLD	
1621-1110	Apex floorboards, black
1621-1111	Apex floorboards, chrom
1621-1112	Tail extension w/ lift kit, black
1621-1113	Tail extension w/ lift kit, chrome

PART #	DESCRIPTION
FOR 99-22 FLHT/FLHR/FLHX/FLTR/FLTRU/FLTRK/FLTRX, 09-13 H-D FL TRIKE, 00-17 FLST AND 12-16 FLD (CONT)	
1621-1114	Lift kit
1621-1115	Tail extension, black
1621-1116	Tail extension, chrome



1602-1444



1602-1445

EZ SHIFT LEVERS

- Improves shifting leverage by 25%
- Makes it easier to shift gears and find neutral
- Reduces force required to move the shift peg from 13 ft/lb to 10 ft/lb
- Includes hardware

PART #	DESCRIPTION
FOR 07-22 TOURING MODELS	
1602-1444	Black

PART #	DESCRIPTION
FOR 07-22 TOURING MODELS (CONT)	
1602-1445	Chrome