

**VANCE
HINES**

TORQUER 450 SLIP-ON MUFFLERS

- Cutting-edge design that enhances the M-Eight engine with a rich, bold roar and improved performance
- Massive 4 1/2" diameter muffler bodies
- CNC-machined billet end caps
- Work with stock headers or Vance & Hines Power Duals (see 2021 Parts Europe FatBook)
- Sold in pairs

PART #	DESCRIPTION
1801-1485	For 17-21 FLHT/FLHX/FLHR/FLTRX/FLTRU/FLTRK

HOGTUNES

All Hogtunes audio products are designed for motorcycle applications specifically, so you get premium sound tuned for the ride. They now have amp/speaker kit packages designed to fit 2005-2020 Road Glide Ultra models. All kits include everything you need for a complete audio upgrade to your bike, including a plug-and-play wiring harness for quick installation. Give your bike some added audio power with Hogtunes.



HOGTUNES
Audio Solutions For The Great American Cruiser



XL SERIES 450-WATT AMP/SPEAKER KIT

- Complete kit with dual 225-watt amps and front and rear XL series speakers
- Includes 57 mesh-front speaker grilles and Road Glide-specific mounting plates for both amps
- Amplifiers feature R.E.M.I.T. circuitry for excellent FM reception from a Class D amp
- All required plug-and-play wiring and mounting hardware to complete the installation is included
- Compatible with H-D specific aftermarket radios

NOTE: Not compatible on CVO models with factory amplifiers installed.

PART

4405-0711

DESCRIPTION

11-13 FLTRU models



HOGTUNES
Audio Solutions For The Great American Cruiser

425-WATT AMP/SIX SPEAKER KIT

- Complete dual amp, 425-watt/six speaker kit
- Includes XL series front and rear speakers and a 18 cm (7") woofer kit for the (vented) fairing lower glove boxes
- Also includes REV 450-AA (PART #4405-0522) 200-watt amp to power front and rear speakers and REV 225-AA (PART #4405-0493) 225-watt amp for 18 cm (7") woofers
- Both amps fit inside fairing, are bolt-in and 100% plug-and-play
- Designed to work with factory charging system, no upgrade required
- Kit comes complete with all plug-and-play wiring and hardware to complete the installation

PART

4405-0713

DESCRIPTION

For 05-13 FLHTCU/FLHTCUTG models

HOGTUNES

Audio Solutions For The Great American Cruiser



FRONT/REAR SPEAKER/AMP KIT

- Includes Gen 3 12,5 cm x 18 cm (5" x 7") front speakers with grilles, rear speakers and 200-watt, 4-channel amplifier
- 100% plug-and-play wire harness and custom mounting plate to secure amp inside Road Glide fairing
- Comes with everything required for complete installation
- System is easily expandable to add second amp in fairing for lower speakers or lids

NOTE: Not compatible with CVO models with factory amplifiers installed.

PART #	DESCRIPTION
4405-0710	11-13 FLTRU models



GEN 4 200-WATT AMP/SPEAKER KIT

- Complete Road Glide-specific front and rear speaker kit with 200-watt, 4-channel amp
- 100% plug-and-play, includes all required hardware to complete installation
- Includes Hogtunes REV 450-RM amp (PART #4405-0523) and GEN 4 16,5 cm (6,5") front and rear speakers with Road Glide-specific grilles

NOTE: This system does not require a radio reflash but a Techno Research (only) reflash is strongly suggested for maximum performance on Road Glide Ultra models.

PART #	DESCRIPTION
4405-0712	15-20 FLTRU/FLTRK



LOW SOLO SEATS

- Specially designed to position the rider lower and farther forward for better control and riding comfort
- Saddle is low, wide and contoured to allow the rider to securely plant their feet when stopped
- Progressive-density foam and GelCore™ technology ease tailbone pressure for better circulation and comfort
- Matching, optional leather-covered pillion pads also feature gel to aid in passenger comfort (sold separately)



0801-1298



0801-1300



0801-1302

FOR 08-20 FLHR/FLHT/FLHX/FLTR/FLTRU/FLTRK/FLTRX AND 09-13 HD TRIKES

PART #	DESCRIPTION
SMOOTH	
0801-1297	Solo seat
0801-1298	Tour pillion pad
0801-1299	Sport pillion pad

PART #	DESCRIPTION
STUDD	
0801-1300	Solo seat
0801-1301	Tour pillion pad
0801-1302	Sport pillion pad



LARIAT LOW SOLO SEAT

- Genuine distressed brown leather construction is as close to having a true western horse saddle as you can get
- Genuine cowhide is tanned and cut to produce unique leather covers; no two seats are the same
- The seat will break in to be supple with a distinctive appearance, further enhancing the unique appeal of the free-range leather
- Specially designed to position the rider lower and forward for better control and riding comfort
- Solo saddle is low, wide and contoured to allow the rider to securely plant feet when stopped
- Progressive-density foam and GelCore™ technology ease tailbone pressure for better circulation and comfort
- Matching, optional leather-covered pillion pads also feature gel to aid in passenger comfort (sold separately)



0801-1294



0801-1295



0801-1296

PART #	DESCRIPTION
FOR 08-20 FLHR/FLHT/FLHX/FLTR/FLTRU/FLTRK/FLTRX AND 09-13 HD TRIKES	
0801-1294	Low solo seat
0801-1295	Tour pillion pad
0801-1296	Sport pillion pad



0820-0144



0820-0149



SEAT KNOB KITS

- Available for applications requiring a 1/4"-20 thread or 1/4"-28 thread
- Smooth top or Slot design
- Made of steel
- Includes screw and washer

PART #	DESCRIPTION
1/4"-20 THREAD	
0820-0144	Smooth, chrome
0820-0145	Smooth, black
0820-0146	Slot, chrome
0820-0147	Slot, black

PART #	DESCRIPTION
1/4"-28 THREAD	
0820-0148	Smooth, chrome
0820-0149	Smooth, black
0820-0150	Slot, chrome
0820-0151	Slot, black



SEAT MOUNT NUT KIT

- Use for custom seat mounting or replacing OEM parts
- 1/4"-28 die-cast nut with nylon retaining washer

PART #	DESCRIPTION
0820-0152	1/4"-28 seat mount nut kit



BRASS MONKEY SLANT SADDLEBAGS

- Sizes to fit any bike
- Made of black synthetic leather
- Measure 30,5 cm L x 24 cm W x 14 cm H (12" x 9,5" x 5,5")

PART

3501-1731



DESCRIPTION

Brass Monkey slant saddlebags

KURYAKYN

HOODRAT UNIVERSAL SWINGARM BAG

- Made from UV-rated, weather-resistant 1200-denier textile
- Interior liner keeps main storage free of debris and moisture
- Rigid bottom-end design provides shape retention, durability and protection from the elements
- Mounts to virtually any exposed triangle-style (Softail) swingarm
- Secure safety-focused strap system keeps slack in the bag to avoid potential belt/chain interference
- External zippered compartment plus multiple external MOLLE attachment points for tools/bungee cords
- Dimensions: 28 cm W x 15 cm D x 38 cm T (11" x 6" x 15")
- Measures 16 liters (990 cubic inches)

PART

3501-1762



DESCRIPTION

Hoodrat universal swingarm bag

KURYAKYN

MOMENTUM RUNAWAY BACKPACK

- Durable, lightweight and designed for minimalist travelers seeking more than the basic backpack offers
- Perfect for use as a daily commuter bag or on your bike
- Made from durable UV-rated, weather-resistant 1200-denier textile with covered zippers for added water resistance
- Adjustable shoulder straps detach at the base for storage in designated sleeve for convenient bike mounting
- Integrated sissy bar/trolley strap and sleeve for shoulder strap storage
- Internal device storage and/or hydration bladder pocket with tube/straw pass-through (hydration bladder not included)
- Front external storage pocket, side bottle pocket with elastic cinch cord, and travel "stash" pocket perfect for passports/IDs or other small valuables
- External MOLLE attachment points and textile tie-down anchors
- Breathable padded back panel for comfort and support
- Includes fully waterproof anchored rain cover
- Measures 29 cm W x 15 cm D x 45,5 cm T (11,5" x 6" x 18")
- Holds 20,5 liters (1250 cubic inches)



PART

3517-0502

DESCRIPTION

Momentum Runaway backpack

KURYAKYN

TRUNK LID ORGANIZER

- Keep the smaller items organized and easily accessible
- Mounts securely to Indian trunk lids and contains a variety of pockets for storage
- Quick-disconnect hook-and-loop and handles make it easy to carry when you reach your destination
- Includes flip-out removable mirror in separate pocket

PART

3522-0015

DESCRIPTION

For 15-20 Roadmaster (except Classic), 14-20 Chieftain (if equipped with a tour trunk)





ARLEN NESS

Three generations of this family lend their expertise to custom bike-building parts and accessories. Ness is not only one of the most recognizable names in custom but has a well-earned reputation for providing innovative, high-quality products for passionate motorcycle enthusiasts that is unmatched within the industry. The new Y-Spoke wheels and Big Brake full-floating rotor kits continue that tradition with eye-catching fit, finish, style and performance for your V-Twin motorcycle.



1621-1008



1621-1011

ADJUSTABLE DRIVER FLOORBOARDS

- Lightweight and see-through designs with machined accent cuts on top and sides of board
- Machined from forged billet aluminum
- Feature three mounting locations and for up to 3" of adjustability
- Longer than stock for extra foot room and added comfort
- Include all mounting hardware
- 18" L X 5,75" W X 1" thick
- Sold in pairs

PART

DESCRIPTION

FOR 18-20 FLDE/FLFB/FLFBS/FLHC/FLHCS/FLSL

1621-1009

Deep Cut, chrome

1621-1008

Deep Cut, black anodized

1621-1011

10-Gauge, chrome

1621-1010

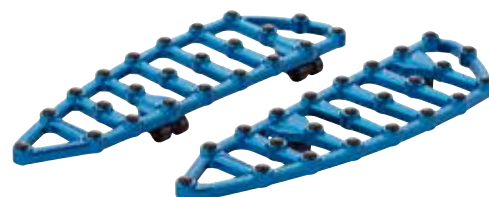
10-Gauge, black anodized w/ machined accents



1621-1012



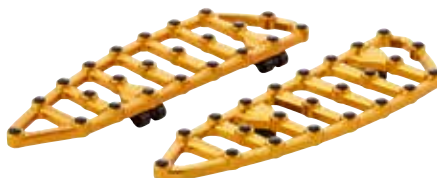
1621-1013



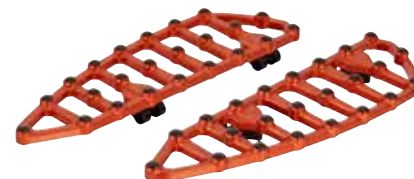
1621-1014

MX DRIVER FLOORBOARDS

- Lightweight, cut-through design with integrated rubber inserts for excellent foot traction
- CNC-machined from billet aluminum with machined cuts on both the top and side of the floorboard for added style at every angle
- Rubber inserts offer foot traction and protect the finish of the aluminum floorboard (inserts are replaceable)
- 18" L X 5,75" W
- Sold in pairs
- Matching MX footpegs are available separately



1621-1015



1621-1016

PART

DESCRIPTION

FOR 18-20 FLDE/FLFB/FLFBS/FLHC/FLHCS/FLSL

1621-1012

Black anodized

1621-1013

Chrome

1621-1014

Blue anodized

1621-1015

Gold anodized

1621-1016

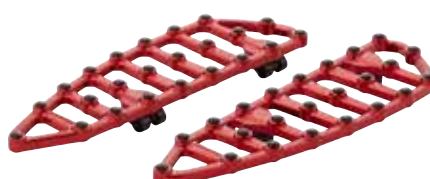
Orange anodized

1621-1017

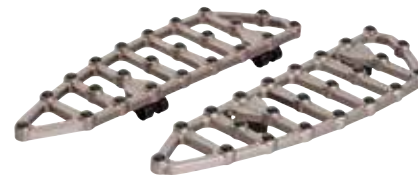
Red anodized

1621-1018

Titanium anodized



1621-1017



1621-1018

BIG BRAKE FULL FLOATING ROTOR KITS

- CNC-machined billet inner carrier
- Each 14" full floating rotor is constructed from a 420 stainless steel outer disc that is drilled for optimum performance and a 6061 billet inner carrier
- Drastically improves braking performance, upgrades the style and provides an anodized color accent to your factory front wheel
- Billet brake caliper adapters are included in each kit to properly relocate your factory caliper to the proper position
- Utilizes factory brake caliper, rotor hardware and brake hose
- Easy bolt-on installation with no need to re-bleed the brake system
- Each kit includes a 14" rotor, caliper adapter bracket and all necessary hardware (must order right and left separately)



1710-3960



1710-3965



1710-3966



1710-3967

PART

DESCRIPTION

FOR 14-20 FLHT/ FLHR/ FLHX/ FLTRX/ FLTRU/ FLTRK MODELS
W/ FACTORY CAST WHEEL EQUIPPED W/ SPOKE MOUNTED ROTORS

1710-3960	Black anodized, left side
1710-3964	Black anodized, right side
1710-3961	Blue anodized, left side
1710-3965	Blue anodized, right side
1710-3962	Gold anodized, left side
1710-3966	Gold anodized, right side
1710-3963	Red anodized, left side
1710-3967	Red anodized, right side

FORGED BILLET Y-SPOKE RIMS

- All rims are CNC-machined from radial forged 6061-T6 aluminum for maximum road durability and strength-to-weight ratio
- Features a rolled rim lip for the custom look and detailed CNC machine work from the center of the hub to the edge of the rim
- Rims can be used on both front and/or rear applications when correct hub kit is installed (sold separately)
- Rims accept Arlen Ness hub kits, which allow full wheels to be assembled in minutes with basic tools

NOTE: Arlen Ness hub kits must be purchased separately to install. Please see the 2021 Parts Europe FatBook or the Parts Europe Indian catalog for required hub kits.



0210-0358



0210-0359



0210-0355

DESCRIPTION	BLACK	TITANIUM	GOLD
FRONT RIMS			
21" x 3.50"	0210-0356	0210-0358	0210-0360

DESCRIPTION	BLACK	TITANIUM	GOLD
REAR RIMS			
18" x 5.50"	0210-0355	0210-0357	0210-0359

METHOD TREE IGNITION SWITCH COVER

- Cover for 15-up Road Glide when converting to custom handlebar riser assembly
- Innovative cover eliminates the need to relocate factory ignition switch when going to a custom handlebar riser assembly
- Works perfectly with Method Kickback riser assembly or many other aftermarket riser assemblies
- Does not work without removing the plastic nacelle on 15-up Road Glide applications
- Black anodized finish

PART

2106-0554

DESCRIPTION

For 15-20 FLTRX/FLTRU/FLTRK





38 MM (1 1/2") EZ INSTALL HANDLEBAR KITS

- New adjustable 38 mm (1 1/2") collar next to the handlebar controls for a custom-finished look
- Revolutionary interlocking bolt-together two-piece handlebar design that takes up half the shelf space, is economical to ship and even faster to install
- CNC mandrel-bent from 38 mm (1 1/2") diameter x 2,4 mm (0,095") wall heavy tube
- EZ Install - no more need to fight internal wiring; with our handlebars you can install wiring in minutes
- Available with pointed top handlebars
- Pointed top bars feature billet machined top with a large internal machined radius that allows for EZ pulling of wiring (non-welded top corner)
- Install kit includes everything to install the handlebars in half the time of other kits due to our design that only extends the existing clutch cable/clutch line and brake lines; no need to waste time and money replacing the existing cables and lines

- Black bars come with wire extensions and smooth black braided lines/vinyl cable extensions as required; chrome bars come with wire extensions and braided stainless lines/cable extensions as required (**see note**)
- Available in chrome or gloss black powdercoated finish
- Designed to work with ABS and non-ABS models
- All bars are knurled and notched for TBW applications

NOTE: Kits only include the necessary components needed to install handlebars based on the model, and the height of the handlebar. Certain models and heights of handlebar kits will include brake line extension, clutch line/cable extension and wiring harness. Some of the shorter handlebar kits will only have a wiring harness or only a clutch line/cable extension.

NOTE: Accept OEM heated grips.

NOTE: U.S. Patent No. 10,946,926.

WITH POINTED TOP HANDLEBARS

CHROME PART #	GLOSS BLACK PART #	END RISE	WIDTH	CENTER WIDTH	PULLBACK
FOR 18-20 FLHRXS (HYDRAULIC CLUTCH, 1 1/4" CLAMPING AREA)					
0601-5456	0601-5458	35,5 cm (14")	89 cm (35")	26,5 cm (10 1/4")	20,5 cm (8")
0601-5457	0601-5459	40,5 cm (16")	89 cm (35")	26,5 cm (10 1/4")	20,5 cm (8")



0602-1194



0602-1191



0602-1192



1602-1401



1602-1402

Accutronix
precision crafted billet products

28,6 MM (1 1/8") BANDIT RISER KITS WITH OR WITHOUT GAUGE MOUNT ADAPTER

- Machined from 6061-T6 billet aluminum and are brilliantly black anodized or chrome-plated
- Fits 28,6 mm (1 1/8") ProTaper-style handlebars
- Uniquely designed 8-bolt common top clamp keeps the handlebars secure
- Drilled for internal wiring; tapped for 1/2"-13 mounting bolts
- Gauge mount adapter bolts to the bottom of the riser top clamp and is designed to adapt FXD and XL OEM gauge mounts that normally bolt to your top riser clamp



0602-1193

PART #	DESCRIPTION
W/ GAUGE MOUNT ADAPTER	
0602-1194	25,5 cm (10") chrome
0602-1195	30,5 cm (12") chrome
0602-1196	25,5 cm (10") black
0602-1197	30,5 cm (12") black

PART #	DESCRIPTION
W/O GAUGE MOUNT ADAPTER	
0602-1190	25,5 cm (10") chrome
0602-1191	30,5 cm (12") chrome
0602-1192	25,5 cm (10") black
0602-1193	30,5 cm (12") black

Accutronix
precision crafted billet products

MUZZLE BRAKE TOE PEGS

- Mimic the look of a Muzzle brake on an AK-47 or AR-15
- Machined from 6061-T6 billet aluminum and available in a solid black-anodized or in a brilliantly chrome-plated finish
- Fit Accutronix forward controls, as well as many other aftermarket forward controls
- 25,4 mm (1") in diameter, 76,2 mm L (3") and attached with a 5/16"-18 flat-head screw (included)
- Sold in pairs

PART #	DESCRIPTION
1602-1401	Chrome
1602-1402	Black



0931-0973



131" STROKER CYLINDER AND PISTON KITS

- Bolt-on kit, works with the stock crankcases
- 4 1/4" bore cylinders with a new 11:1 forged piston design
- When paired with an S&S 4,625" stroker flywheel (sold separately), engine will be a true 131 cubic inches
- Retains stock engine height
- Kits include 0,045" MLS (Multi-Layer Steel) head gaskets
- Stock engine height is retained
- Original engine serial numbers are retained
- 131" cam cover badge included

NOTE: Must be used with S&S stroker flywheel PART #s 0922-0168 or 0922-0174 (sold separately) to achieve 131" displacement.



0931-1011

PART #	DESCRIPTION
FOR 17-21 M-EIGHT	
0931-0973	Wrinkle black w/ highlighted cylinder fins
0931-1011	Wrinkle black w/ non-highlighted cylinder fins
0931-1012	Black granite w/ highlighted cylinder fins



REPLACEMENT PISTON KITS

- OEM-quality cast aluminum alloy construction
- Some fitments feature pistons with a coating that extends piston life, reduces friction and allows for cooler running engines
- Ideal for OEM replacement
- Economical with great performance, all in one package
- Available in various compression ratios
- Kit includes two pistons, wrist pins and clips
- Accepts OEM or Hastings rings (order separately)



0911-0049

PART #	DESCRIPTION
FOR 17-20 M-EIGHT 107" MOTORS (COATED PISTONS, 10,0:1 COMPRESSION RATIO; 3,937" BORE)	
0911-0049	Std.
0911-0050	+0,005"
0911-0051	+0,010"
0911-0052	+0,020"

PART #	DESCRIPTION
FOR 17-20 M-EIGHT 114" MOTORS (COATED PISTONS, 10,5:1 COMPRESSION RATIO; 4,000" BORE)	
0911-0053	Std.
0911-0054	+0,005"
0911-0055	+0,010"
0911-0056	+0,020"



0712-0021



DS-275108



0712-0011



DS-275109



2005-1400

SPIN-ON OIL FILTERS

- High-quality spin-on filters are a dependable replacement for most H-D models
- Available in chrome and black versions
- Filters with nut include a 17 mm hex nut on the end of the filter for easy installation/removal

DESCRIPTION	BLACK	BLACK WITH NUT	CHROME	CHROME WITH NUT
For 17-20 M-Eight (standard capacity) , 99-17 Twin Cam models; repl. OEM #63798-99, 63731-99A	DS-275109	0712-0021	DS-275108	0712-0011
For 17-20 M-Eight (high capacity); repl. OEM #62700296, 62700297	0712-0641	0712-0643	0712-0640	0712-0642
For 80-98 FLT; 82-94 FXR; L84-85 XL; 84-99 FXST/FLST; repl. OEM #s 63796-77A, 63806-83 and 63805-80A	DS275204	0712-0019	DS275203	0712-0009
For L82-84 FLH; L82-86 FX/FXWG; 80-E84 XL; repl. OEM #s 63782-80A and 63810-80	DS275206	0712-0132	DS275205	0712-0018
For 91-98 Dyna Glide; repl. OEM #63813-90	DS-275119	0712-0023	DS-275118	0712-0012
For L82-86 FX/FXWG	-	-	-	0712-0006
For 65-82 FX/FL, 57-78 XL; repl. OEM #63840-53	DS275201 ¹	-	-	-
For 65-82 FX/FL; 57-78 XL	0712-0379 ²	-	-	-
For 36-54 Big Twin; repl. OEM #63840-48A	DS275202 ¹	-	-	-
For 02-17 V-Rod; repl. OEM #63793-01K	2005-1400	0712-0022	-	-
For 86-20 XL, 09-12 XR1200/X; repl. OEM #s 63796-77A, 63806-83 and 63805-80A	DS275204	0712-0019	DS275203	0712-0009

¹ Drop-in filter element only.² Drop-in filter element and spring.

MAGNETIC RING OIL FILTERS

- High-quality chrome spin-on-style oil filters
- Magnetic filters are designed with a magnetic ring in center to capture small particles of loose metal and come with pressure relief valves
- PART #0712-0008 has a 17 mm nut on the end of the filter for easy installation/removal

DS-275188



0712-0008



0712-0479

OIL FILTERS

- High-quality spin-on filter
- Available in chrome or black

PART #	DESCRIPTION
FOR 14-21 CHIEF CLASSIC/DARK HORSE/VINTAGE/VINTAGE LE/SPRINGFIELD	
0712-0479	Black
0712-0480	Chrome
FOR 14-21 CHIEFTAIN	
0712-0479	Black
0712-0480	Chrome
FOR 15-21 ROADMASTER	
0712-0479	Black
0712-0480	Chrome
FOR 15-21 SCOUT, SCOUT SIXTY, SCOUT BOBBER	
0712-0479	Black
0712-0480	Chrome



CUSTOM OIL FILTER MOUNT

- Chrome filter mount features 1/4" NPT fittings and may be used with 3/8" stainless steel or rubber lines
- Accepts all Evolution-style oil filters

PART #	DESCRIPTION
DS-275104	For 92-99 Evolution Big Twin models



TRANSMISSION OIL DRAIN TOOL

- Directs the transmission fluid from the bottom of the case to the drain pan instead of on the frame
- Helical design locks into place to ensure it stays put
- Drain plug can be removed through an opening in the center of the tool
- CNC-machined from billet aluminum

PART #	DESCRIPTION
0712-0314	For 09-16 FLHT/FLHX/FLHR/FLTR models



CARBON FIBER SHIFTER LINKAGE

- Carbon-fiber race-inspired look that weighs half the weight of the stock linkage
- Teflon-coated heim joints for longer life
- Aids in smoother shifts and makes it easier to select neutral
- Custom stainless steel installation hardware included
- Measures 30,5 cm (12") L

PART #	DESCRIPTION
1601-0527	For 86-17 FXST/FLST and 84-20 FLT/FLHT/FLHR/FLTR/FLTRU/FLTRK/FLHX and H-D FL Trike



OIL FILTER MOUNT

- Designed to replace the OEM cast mount
- Includes 3/4"-16 oil filter adapter
- Mount with OEM hardware
- 11/16" threads accept OEM hard lines
- Black

PART #	DESCRIPTION
0712-0390	For 92-99 Evolution Big Twin; repl. OEM #s 26378-92A, 26381-92A



EXTENDED FUEL MIXTURE SCREW

- Kit includes all necessary parts to replace OEM-style fuel mixture screw with an extended screw for easy tuning
- Kit includes extended mixture screw O-ring, spring and washer

PART #	DESCRIPTION
1050-0451	For Keihin 40 mm CV carbs



STEALTH TWO AIR CLEANER KIT

- One-piece, black molded filter body with blue element
- Element constructed of pleated cotton

PART #	DESCRIPTION
1010-2774	15-21 Scout, Scout Sixty, Scout Bobber



1011-3523



1011-3522



OEM-STYLE REPLACEMENT AIR FILTER ELEMENTS

- High-quality paper filter medium
- Meets or exceeds OEM specifications
- For use with OEM stock air filter housings

APPLICATION CHART

PART #	DESCRIPTION
1011-3523	For 14-21 Chief Classic/Vintage/Chieftain
1011-3523	For 15-21 Chief Classic/Vintage
1011-3523	For 15-21 Chieftain/Roadmaster
1011-3522	For 15-21 Scout, 16-21 Scout Sixty/Scout Bobber



"BOB" RETRO-STYLE AIR CLEANERS AIR FILTER

- Reuseable foam filter element
- Sold each

PART #	DESCRIPTION
1011-0881	Air filter element for BOB retro-style air cleaners





1011-4230



1011-4202



1011-4198



1011-4197



1011-4228



1011-4229



1011-4203



1011-4199



1011-4208



1011-4200



1011-4207



1011-4260



1011-4196



1011-4201



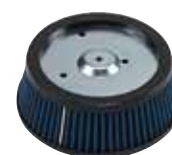
1011-4204



1011-4205



1011-4206



1011-4209

REUSABLE AIR FILTERS

- Durable epoxy-coated wire mesh designed to maximize airflow and provide peak filtration
- 100% reusable and washable
- Pre-oiled for quick easy installation
- High-flow four-layer surgical-grade cotton filtration
- Urethane body won't crack or curl like rubber



1011-4210



1011-4212



1011-4213



1011-4214



PART #	DESCRIPTION
FOR BIG TWIN AND V-ROD	
1011-4230	For 17-20 FLHT/FLHR/FLHX/FLTRX/FLTRU/FLTRK/HD FL TRIKE; repl. OEM# 29400212
1011-4202	For 14-16 FLHT/FLHR/FLHX/FLTR/H-D FL Trike and 16-17 Softail (except FLSS/FLSTFBS); repl. OEM # 29400045
1011-4198	For 08-13 FLHT/FLHR/FLTR/FLHX/H-D FL Trike; repl OEM #29633-08
1011-4197	For 99-17 Twin Cam (except 08-16 Dresser/H-D FL Trike, 11-13 FXS, 12-16 FLS, 08-11 FLSTSB, 99-01 Magneti-Marelli EFI, 08-16 Dyna Glide); repl OEM #29461-99, 29400042
1011-4228	For 19-20 FLDE/FLHC/FLSL/FLSB/FLFB/FXLR/FXBB/FXBR/FXFB (107") repl. OEM# 29400248
1011-4229	For 18-20 FLFBS/FLHCS/FXBRS/FXFBS, 17-20 CVO Touring (114"); repl. OEM# 29400267
1011-4203	For 12-17 FLS, 11-13 FXS, 08-11 FLSTSB, 13-17 FXDB; repl. OEM #29314-08
1011-4199	For 08-17 FXD/FXDB/FXDC/FXDF/FXDL/FXDWG/FLD (except 13-17 FXDB); repl. OEM #29191-08
1011-4208	For 99-01 88" Twin Cam (w/ Magneti-Marelli EFI); repl. OEM #29462-99
1011-4200	For 90-99 80" Evolution Big Twin (carb); K&N ref. # HD-1390; repl. OEM #29259-91A/29330-96
1011-4207	For 90-99 Screamin Eagle Evolution Big Twin; K&N ref. # HD-0600; repl. OEM #29055-89
1011-4211	For 02-17 V-Rod; repl. OEM #29437-01

PART #	DESCRIPTION
FOR XL/BUELL	
1011-4260	For 14-20 XL; repl. OEM # 29400015
1011-4196	For 04-13 XL (except 13 1200V); repl. OEM #29331-04
1011-4201	For 88-03 XL; repl. OEM #29331-96
FOR AFTERMARKET AIR CLEANERS	
1011-4204	For S&S "D" teardrop air cleaner; 6" x 2 1/16" (K&N ref. #E-3224)
1011-4205	For S&S teardrop air cleaner; 6" x 2 3/16" (K&N ref. #E3225)
1011-4206	For S&S Super E and G teardrop air cleaner; 6" x 2 1/2" (K&N ref. #E3226)
1011-4209	Screamin' Eagle Stage 1 air filter Twin Cam (except 99-01, 08-17 Dresser, 08-17 Dyna); repl. OEM #29442-99A
1011-4210	Screamin' Eagle Stage 1 air filter 04-20 XL; repl. OEM #29044-04
1011-4212	Screamin' Eagle Stage 1 air filter 08-14 FLHTCUSE/FLHRSE; repl. OEM #29244-08
1011-4213	Screamin' Eagle Stage 1 air filter 08-17 Dyna; repl. OEM #29385-08
1011-4214	Screamin' Eagle Stage 1 air filter 14-16 FLHT/FLHR/FLHX/FLTR/H-D FL Trike and 16-17 Softail (except FLSS/FLSTFBS)



1011-3940



1011-3178



1011-2957



1011-4219



1011-2960



1011-3247



1011-4218



1011-4223



1011-2956



1011-4226



1011-4225



1011-4224



1011-2958



1011-3179



1011-3177



1011-2959



1011-4221



1011-2961



1011-4222



1011-4215



1011-4216



1011-4217



1011-4220



REPLACEMENT AIR FILTER ELEMENTS

- High-quality paper filter medium
- Meets or exceeds OEM specifications
- For use with OEM stock air filter housings

NOTE: Not for use with Screamin' Eagle air cleaners (unless noted).

PART #	DESCRIPTION
FOR BIG TWIN	
1011-3940	For 17-20 FLHT/FLHR/FLHX/FLTRX/FLTRU/FLTRK/H-D FL Trike; repl. OEM #29400212
1011-3178	For 14-16 FLHR/FLHT/FLHX/FLTR/H-D FL Trikes, 16-17 Softail (except FLSS/FLSTFBS); repl. OEM #29400045
1011-2957	For 08-13 FLHR/FLHT/FLHX/FLTR and H-D FL Trikes; repl. OEM #29633-08
1011-4219	For 99-01 88" Twin Cam Fuel-Injected Dressers; repl. OEM #29462-99
1011-2960	For 90-99 Evolution Big Twin; repl. OEM #29330-96
1011-3247	For 95-99 Evolution Big Twin International models; repl. OEM #29325-95A
1011-4218	For Screamin' Eagle Evolution Big Twin; repl. OEM #29055-89
1011-4223	For 08-14 FLHTCU/FLHRSE w/ Screamin' Eagle stage I air cleaner; repl. OEM# 29244-08
1011-2956	For 99-17 Twin Cam (except 11-13 FXS, 12-17 FLS, 99-01 EFI models, 08-16 FLHT/FLHR/FLHX/FLTR and H-D FL Trike models, 08-15 Dyna Glide models, 08-11 FLSTSB); repl. OEM #s 29461-99/29400042
1011-4226	For 18-20 FLDE/FLHC/FLSL/FLSB/FLFB/FXLR/FXBB/FXBR/FXFB (107") repl. OEM# 29400248
1011-4227	For 18-20 FLFBS/FLHCS/FXBRs/FXFBS, 17-20 CVO Touring (114") repl. OEM# 29400267
1011-4225	For 14-16 FLHT/FLHR/FLHX/FLTR/H-D FL Trike and 16-17 Softail (except FLSS/FLSTFBS) w/ Screamin' Eagle Stage I air cleaner

PART #	DESCRIPTION
FOR BIG TWIN (CONT)	
1011-4224	For 08-17 Dyna w/ Screamin' Eagle stage I air cleaner; repl. OEM# 29385-08
1011-2958	For 08-17 FXD/FXDB/FXDC/FXDF/FXDL/FXDWG (except 16-17 FXDLS, 13-17 FXDB); repl. OEM #29191-08
1011-3179	For 13-17 FXDB, 12-17 FLS, 11-13 FXS, 08-11 FLSTSB models; repl. OEM #29314-08
FOR XL AND V-ROD	
1011-3177	For 14-20 XL models; repl. OEM #29400015
1011-2959	For 04-13 XL (except 13 1200V); repl. OEM #29331-04
1011-4221	For 04-16 XL w/ Screamin' Eagle stage 1 (oval)
1011-2961	For 88-03 XL; repl. OEM #29331-96
1011-4222	For 02-17 V-Rod; repl. OEM #29437-01A
FOR AFTERMARKET AIR CLEANERS	
1011-4215	For S&S "D" teardrop air filters
1011-4216	For S&S 6" x 2 3/16" air filters
1011-4217	For S&S Super E and G series carb air filters
1011-4220	For Arlen Ness billet Sucker air filter Twin Cam (except 16-17 Softail, 08-17 Dresser), Arlen Ness Stage 1 Big Sucker/Billet Sucker air filter for CV carb or Delphi EFI (except 16-17 Softail, 08-17 Dresser)



0403-0171



0403-0174



0403-0168



0403-0169

WIDE TIRE FORK KITS

- Made from heat-treated billet aluminum
- Built to accommodate a 5,5" wide wheel
- 49 mm fork lowers
- For single- or dual-disc applications
- Sleek pinstripe detailing
- Available in Contrast Cut and chrome finishes
- Kit includes axle, axle covers, slide covers, lower fork legs with caliper and fender mounts and chrome hardware

PART #	DESCRIPTION
FOR 14-20 FLHT/FLHR/FLHX/FLTRX/FLTRU/FLTRK	
0403-0171	Dual disc, Contrast Cut
0403-0172	Dual disc, chrome
0403-0173	Single disc, Contrast Cut
0403-0174	Single disc, chrome



0610-2189



0610-2192

RADIAL HYDRAULIC CLUTCH AND BRAKE MASTER CYLINDERS

- CNC-machined from billet aluminum
- Lever reach adjustable over 0,5"
- 1" clamping diameter
- 9/16" bore for single disc or 11/16" bore for dual disc applications
- Compatible with OEM switch housings and CAN-Bus wiring
- Available in Black Ops™ or Gold Ops™ finish
- Mirror mounts, brake light and clutch safety switches sold separately (see page 1191 of the 21 Parts Europe FatBook)

PART #	DESCRIPTION
BRAKE MASTER CYLINDER ASSEMBLIES	
0610-2188	11/16", Black Ops
0610-2189	11/16", Gold Ops
0610-2190	9/16", Black Ops
0610-2191	9/16", Gold Ops
CLUTCH MASTER CYLINDER ASSEMBLIES	
0610-2192	11/16", Black Ops
0610-2193	11/16", Gold Ops

FORK LEG KITS

- Artfully sculpted from heat-treated billet aluminum
- Machined PM icon logo with a pinstripe detail that extends the length of the fork legs, and a hidden-axle design
- Kits include axle, axle covers, left and right legs with caliper and fender mounts installed
- Available in single disc or dual disc in chrome and Contrast Cut™ finishes
- For stock or performance machine calipers
- Dust caps 0406-0111 and 0406-0112 sold separately

PART #	DESCRIPTION
FOR STOCK OR PERFORMANCE MACHINE CALIPERS	
FOR 06-17 FXD/FXDWG, 18-20 SOFTAIL	
0403-0167	Contrast Cut™ (dual disc)
0403-0168	Chrome (dual disc)
0403-0169	Contrast Cut™ (single disc)
0403-0170	Chrome (single disc)

VISION SERIES COUNTER GRIPS W/ LED TURN SIGNALS

- Machined from billet aluminum
- End grips feature bright single-function LED turn signals
- Compatible with standard and CAN-bus wiring systems
- Available in chrome and black anodized finishes
- Replaceable Renthal rubber inserts
- Include setscrews and Allen wrench
- Sold in pairs



0630-2729



0630-2732

PART #	DESCRIPTION
FOR 08-20 FLHT/FLHR/FLHX/FLTR, H-D FL TRIKE, 16-20 SOFTTAILS, 20 ELW, 16-17 FXDLS, 14-15 FLSTNSE, 13-15 FXSBSE, 11-12 FLSTSE MODELS	
0630-2729	Black anodized
0630-2730	Chrome
FOR 99-17 TWIN CAM AND 86-20 XL MODELS (EXCEPT 08-17 DRESSERS, H-D FL TRIKE, 16-17 SOFTTAILS, 20 ELW, 16-17 FXDLS, 13-15 FXSBSE, 14-15 FLSTNSE, 11-12 FLSTSE AND MODELS W/ AIR-ASSISTED FORKS)	
0630-2731	Black anodized
0630-2732	Chrome



CUSTOM DYNAMICS

Everything needed to light up your ride! Custom Dynamics has been offering the highest quality LED lighting products for American V-Twins since 2002. They utilize the latest technologies and manufacturing techniques to ensure the highest quality products and trouble-free performance. From adaptive front headlights to multi-function taillight/turn signal lights and LED panels, Custom Dynamics has products for the latest bikes to give them high-tech LED performance and style.



2001-2417

PROGLOW™ 18 CM (7") LED HEADLAMPS WITH COLOR-CHANGING HALO

- Round headlamp features built-in color-changing halo
- Die-cast aluminum housing with durable polycarbonate lens
- High beam: 3620 lumens, 3,6 amps at 12V
- Low beam: 2480 lumens, 1,8 amps at 12V
- Plug-and-play technology

PART #	DESCRIPTION
FOR 80-20 FL/FLH/FLHT/FLHX, 09-20 FLHTCUTG, 94-20 FLHR, 86-17 FLST, 15-20 FREEWHEELER, AND 12-16 FLD MODELS	
2001-2417	Black
2001-2418	Chrome



2001-2409

PROBEAM 18 CM (7") ADAPTIVE LED HEADLAMPS

- Round headlamp with polycarbonate lens
- Die-cast aluminum housing
- Adaptive, plug-and-play technology

2001-2410

PART #	COLOR
FOR 15-21 CHIEF/SPRINGFIELD/CHIEFTAIN/CHALLENGER AND ROADMASTER MODELS	
2001-2409	Black
2001-2410	Chrome



2001-2419

PROGLOW™ 11,5 CM (4,5") LED PASSING LAMPS WITH COLOR-CHANGING HALO

- Round auxiliary passing lamps feature color-changing halos
- Durable polycarbonate lens
- Die-cast aluminum housing
- 881 connector for installation on 05-20 Harley-Davidson models equipped with OE 11,5 cm (4,5") passing lamps (will not fit 18-20 Softail models)
- Sold in pairs

PART #	DESCRIPTION
2001-2419	Black
2001-2420	Chrome

2001-2420





2010-1444



2010-1445

PROBEAM® LOW-PROFILE LED TAILLIGHTS WITH AUXILIARY TURN SIGNALS

- Five LED running light pipes with full contrast red brake LEDs
- Built-in left and right amber auxiliary turn signals
- Low profile design protrudes 51 mm (2") from stock taillight baseplate
- Available with red or smoke lens
- Plug-and-play

PART

DESCRIPTION

FOR 99-21 FLHR, 19-21 FLHT, 06-09 FLHX, 99-13 FLHT/FLHTCU/FLHRC/FLTRU/FLTRUSE, 99-09 FLTR, 18-20 FLHC, 99-17 SOFTTAILS (EXCEPT FXS/FLS/FXSB/FXSBSE/FLSTN/FLSTNSE/FXCWC, AND 10 FLSTSE2), 99-17 DYNA MODELS (EXCEPT 09-17 FXDB, 10-17 FXDWG) 14-20 XL883L/XL1200T, 99-13 XL MODELS (EXCEPT XL1200N, XL1200X, XL1200V OR XL883N)

2010-1442	No window, red lens
2010-1443	No window, smoke lens
2010-1444	Top window, red lens
2010-1445	Top window, smoke lens



2040-2720



2040-2721

DUAL COLOR FASCIA LED PANELS

- 45 dual-color LEDs per unit
- Red running/brake light, amber turn signal
- Available in gloss black or chrome housing with smoke lens
- Pre-taped for mounting
- Plug-and-play installation
- Sold in pairs

PART

DESCRIPTION

FOR 14-21 FLHX/FLHXS/FLTRX/FLTRXS/FLHRS MODELS (DOES NOT FIT CVO MODELS)

2040-2720	Black
2040-2721	Chrome

FOR 10-13 FLHX/FLTRX MODELS (DOES NOT FIT CVO MODELS)

2040-2722	Black
2040-2723	Chrome

FOR 06-09 FLHX MODELS

2040-2724	Black
2040-2725	Chrome



49 MM FORK TUBES

- Fit a wide variety of models
- Chrome, gold or black anodized finish
- Accept all OEM components
- Sold in pairs

NOTE: If installing any aftermarket cartridge-style internal kits, tubes are designed to accept 14-16 style kits only.

PART #	DESCRIPTION
FOR 14-21 FLHT/FLHR/FLHX/FLTRX/FLTRU/FLTRK MODELS	
CHROME	
0404-0564	581 mm (22,875")
0404-0567	632 mm (24,875")
GOLD	
0404-0566	581 mm (22,875")
0404-0569	632 mm (24,875")
BLACK ANODIZED	
0404-0565	581 mm (22,875")
0404-0568	632 mm (24,875")



RECEIVER-STYLE TRAILER HITCH

- Fabricated from laser-cut steel; hand-welded, then powdercoated
- Bolts directly to the frame in minutes
- Triple-chrome-plated tongue is 47,6 mm (1⁷/₈") wide; the receiver is 31,8 mm (1¹/₄")
- Receiver is almost completely hidden; the tongue installs easily using a hitch pin and clip
- Made for use with or without Harley-Davidson® optional rear bumper
- Tongue height is 279 mm (11"), which accommodates most trailers
- Includes hitch, tongue and all necessary hardware



PART #	DESCRIPTION
3902-0263	For 20 FLHTCUTG/FLRT



0703-0860



0703-0862



0703-0864



0703-0865



0703-0866



0703-0868



BILLET ALUMINUM GAS CAPS

- Screw-in vented caps sport the Roland Sands Design logo
- Available in Contrast Cut™ and Black Ops™ finishes

PART #	DESCRIPTION
FOR L96-20 BIG TWIN, L96-20 XL	
0703-0860	Cafe, Contrast Cut™
0703-0861	Cafe, Black Ops™
0703-0862	Tech, Contrast Cut™
0703-0863	Tech, Black Ops™
0703-0864	Gear Drive, Contrast Cut™
0703-0865	Gear Drive, Black Ops™
0703-0866	Tracker, Contrast Cut™



0703-0870



0703-0872

PART #	DESCRIPTION
FOR L96-20 BIG TWIN, L96-20 XL (CONT)	
0703-0867	Tracker, Black Ops™
0703-0868	Vintage, Contrast Cut™
0703-0869	Vintage, Black Ops™
0703-0870	Misano, Contrast Cut™
0703-0871	Misano, Black Ops™
0703-0872	Radial, Contrast Cut™
0703-0873	Radial, Black Ops™



2104-0364



2104-0365



2104-0366

CUSTOM-COLORED 409 PRO RACE WIRES

- Same features as the Sumax 8 mm wires but larger (10,4 mm) for that fat look
- Sold in pairs

PART #	DESCRIPTION
FOR 18-21 SOFTAIL MODELS	
2104-0364	Black
2104-0365	Red
2104-0366	Blue

PART #	DESCRIPTION
FOR 18-19 FXDR/FXDRS MODELS	
2104-0367	Black



2104-0355



2104-0356



2104-0357



2104-0358



2104-0359



2104-0360

8 MM CUSTOM-COLORED PLUG WIRES

- Designer plug wire sets come in distinctive, highly visible colors
- Precut and have the plug/coil boots and terminals already installed
- Boots and wires are made from extra-high-temperature silicon, which gives protection up to 316 °C (600 °F)
- Spiro-Pro core provides up to 10 times the conductivity of a standard carbon-core wire
- Low resistance means they run cooler and last three to four times longer than carbon-core wires
- Sold in pairs

PART #	DESCRIPTION
FOR 18-21 SOFTAIL MODELS	
2104-0355	Black
2104-0356	White
2104-0357	Red
2104-0358	Yellow
2104-0359	Blue
2104-0360	Orange

PART #	DESCRIPTION
FOR 18-19 FXDR/FXDRS MODELS	
2104-0361	Black
2104-0362	Red
2104-0363	Blue