



FORCE EVO 3/4 EXHAUST SYSTEM FOR KAWASAKI ZX-10R/RR 21-24

- Non-homologated racing version for maximum performance
- Titanium construction eliminates heavy catalyst, while a titanium muffler and carbon end cap further reduce weight
- Sharp and symmetric shape allow maximum airflow for increased power gains
- Weight approximately 1,8 kg (4 lbs) and has been dyno tested for maximum hp gains
- Sound tested to 113 dB
- Compatible with original collector
- For race use only

Note: Not compatible with passenger footpegs.

DESCRIPTION

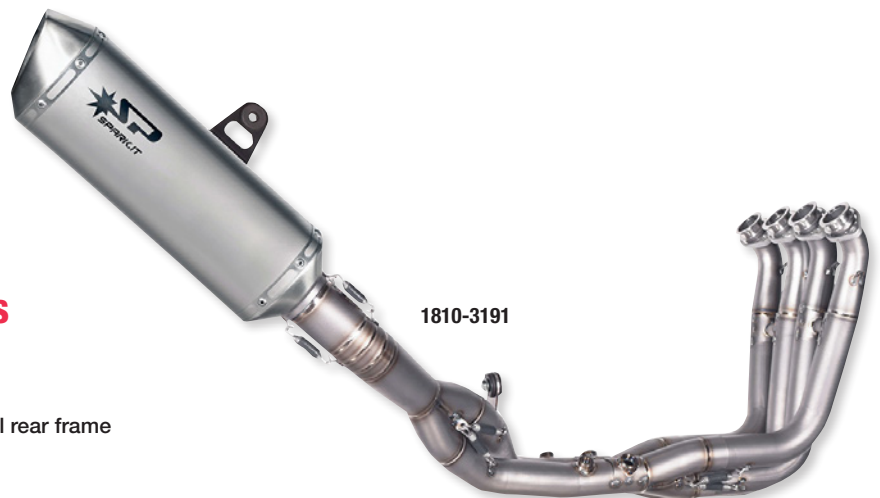
Force EVO 3/4 exhaust system w/ titanium pipe and Force EVO silencer

PART

1810-3192

FORCE EVO RACING FULL EXHAUST SYSTEMS

- High-flow, complete exhaust system that offers maximum power and torque gains through the entire powerband, while still meeting restrictive dB limits
- Mounting kit includes holder to fix silencer to the original rear frame
- Compatible with original fairings
- Compatible with original and special radiators



1810-3191

FITS MODEL

DESCRIPTION

PART

BMW		
S 1000 RR 19-24 and M 1000 RR 20-24	Full titanium system with titanium collector plus Force EVO silencer	1810-3191
KAWASAKI		
ZX-4R/RR 23-24	Racing complete kit with Konix EVO: stainless steel manifolds and a titanium silencer	1810-3195



GRID-O SLIP-ON FULL EXHAUST SYSTEM FOR YAMAHA MT-07 14-20/TRACER 700 16-20

- Improved performance compared to standard exhaust
- Aggressive sound and style
- Mufflers are TIG-welded, and 3D laser-cut using state-of-the art technology
- Connects to catalyzed collector
- Muffler made of titanium
- For racing use

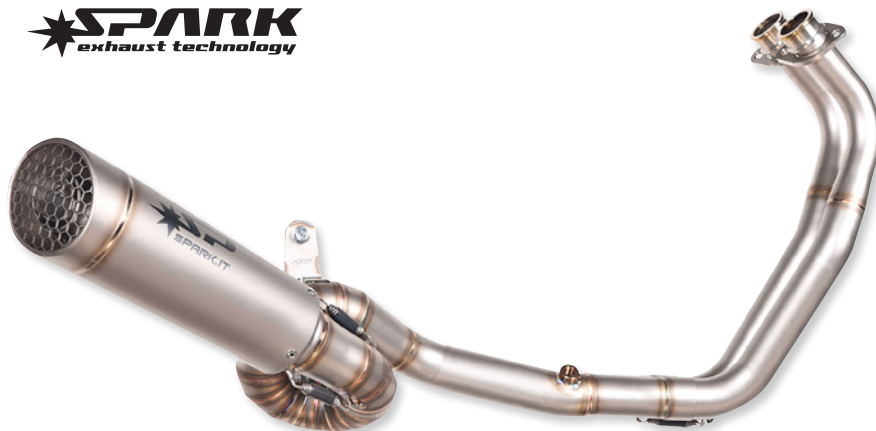
DESCRIPTION

Grid-O slip-on full system w/ TIG welded collector, AISI 304 stainless steel collector and titanium Grid-O silencer

PART

1810-3194

SPARK
exhaust technology



GRID-O RACING 3/4 EXHAUST SYSTEM FOR TRIUMPH STREET TRIPLE 765 RS/R/S 20-22

- Improved performance compared to standard exhaust
- Aggressive sound and style
- Mufflers are TIG-welded, and 3D laser-cut using state-of-the art technology
- Connects to catalyzed collector
- Muffler made of titanium

DESCRIPTION

3/4 kit standard mounting w/ stainless steel box and Grid-O silencer

PART

1810-3193



RACING COLLECTORS

- Constructed of stainless steel or titanium
- Made using the most advanced technologies
- ECE approved

DESCRIPTION

For BMW R 1200 GS 13-16

For KTM 1290 Super Duke R/R EVO 20-24, 1390 Super Duke R/R EVO 24

FINISH

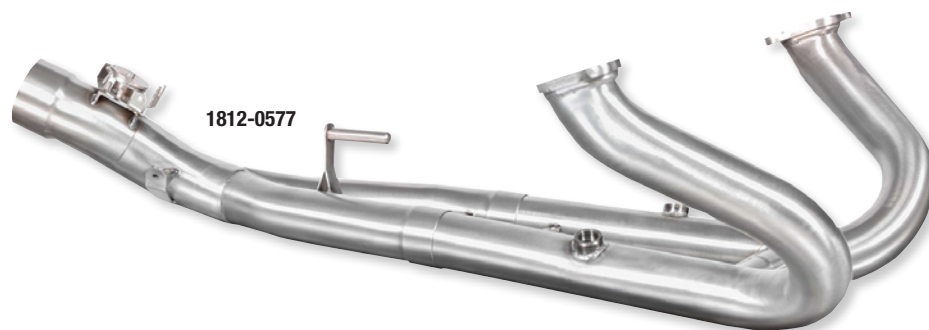
Stainless steel

Titanium

PART

1812-0577

1812-0584



FORCE SLIP-ON MUFFLERS FOR BMW 1300 GS 24

- Unique shape provides a clean look while providing maximum exhaust volume for increased performance
- Each end cap is made of stainless steel with a Scotch-Brite™ finish
- Every end cap is 2D laser cut, hydraulic pressed with five different molds, then is 3D laser cut, making it extremely light, weighing only a few grams
- Made of titanium

DESCRIPTION

Titanium Force slip-on muffler w/ Force silencer w/ connecting pipe for lateral mounting

PART

1811-4660





1811-4662



1811-4670



FIGHTER EVO SLIP-ON MUFFLERS

- Fighter EVO silencer, with carbon fiber end cap
- New evolution for the Fighter silencer; full titanium, extremely light and enriched by a rib on the carbon end cap
- Such aggressive design is an icon of visual strength expressing pure aesthetic power
- The dB killer has been designed to allow safe installation with side cases



1811-4673

FITS MODEL	DESCRIPTION	PART #
BMW		
R 1200 GS/Adventure 13-18	Matte black	1811-4662
HUSQVARNA		
Norden 901 22-24	Black	1811-4670

FITS MODEL	DESCRIPTION	PART #
KTM		
890R Adventure 22-24	Black	1811-4670
TRIUMPH		
Tiger 900 20-23	Titanium	1811-4673



FIGHTER SLIP-ON MUFFLER FOR HONDA CRF1100L AFRICA TWIN AND ADVENTURE SPORT 20-24

- Full titanium muffler with carbon end cap; comes with connecting pipe



DESCRIPTION	PART #
Fighter slip-on; titanium muffler and carbon end cap w/ connecting pipe	1811-4667



KONIX EVO SLIP-ON MUFFLERS

- Maximizing performance, giving a dark and aggressive sound
- Racing design with carbon end cap
- Lightweight made entirely of titanium

FITS MODEL	DESCRIPTION	PART #
DUCATI		
Multistrada V4 21-24	Titanium, Konix EVO silencer with carbon endcap and connecting pipe	1811-4665
KTM		
1290 Super Duke R/R EVO 20-24, 1390 Super Duke R/R EVO 24	Stainless steel, homologated Konix EVO silencer with stainless steel pipe for lateral mounting	1811-4672



KONIX SLIP-ON MUFFLER

- Racing design, aggressive sound, improved performance and reduces the weight (-38% compared to the original system)
- Db killer has a special angle in order to flow gas and heat downward



DESCRIPTION	PART #
Konix slip-on muffler w/ silencer, includes stainless steel pipe for lateral mounting	1811-4666



DYNO SLIP-ON MUFFLERS

- Pure design and technology
- Precious details on the precision-milled endcap gives a technical and aesthetic element to customize your bike with style
- Lightweight slip-on, with silencers made entirely of titanium
- Allows you to replace the bulky and voluminous original catalyst and give your bike a dark and deep voice
- Available in titanium



FITS MODEL	PART #	FITS MODEL	PART #
DUCATI		TRIUMPH	
Monster 937 21-24	1811-4663	Speed Triple 1200 RS/RR 21-24	1811-4674



1811-4668



1811-4669



DAKAR SLIP-ON MUFFLERS

- The Dakar shape perfectly fits the style of this Desert Rally Icon
- Developed with the latest technology and materials
- Available in two different materials
- Homologated
- ECE approved

FITS MODEL	DESCRIPTION	PART #
HONDA		
CRF1100L African Twin/Adventure Sport 20-24	Titanium	1811-4668

FITS MODEL	DESCRIPTION	PART #
HUSQVARNA		
Norden 901 22-24	Dark style titanium	1811-4669



1811-4661



1811-4664



GRID-O SINGLE/DOUBLE SLIP-ON MUFFLERS

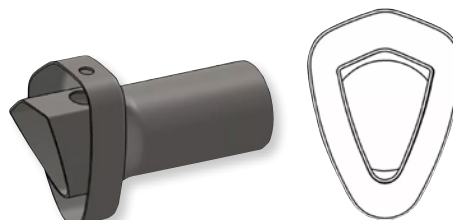
- Improved performance compared to standard exhaust
- Aggressive sound and style
- Mufflers are TIG-welded, and 3D laser-cut using state-of-the art technology
- Connects to catalyzed collector
- Double muffler includes two Grid-O silencers underseat (left and right side) - homologated
- Made of titanium

FITS MODEL	DESCRIPTION	PART #
BMW		
M 1000 RR ABS 21-24, S 1000 RR ABS 19-24	Single	1811-4661
DUCATI		
Hypermotard 950 SP ABS 19-21, Hypermotard 950 SP ABS RVE Graffiti Livery 21-24	Double	1811-4664
KAWASAKI		
Z900 20-24	Single	1811-4671

FORCE/KONIX EVO DB KILLER

FOR YAMAHA YZF-R1 15-24, TRIUMPH STREET TRIPLE 765 RS/R/MOTO2™ EDITION 23-24, KAWASAKI ZX-4RR 24

- dB Killer for Force EVO and Konix EVO



DESCRIPTION	PART #
Force/Konix EVO dB killer	1860-2476



ADVENTURE BIKE UNIVERSAL MUFFLER HEAT SHIELDS

- Prevents side panels and soft bags from touching bike's hot exhaust
- Easy clamp-on design with stainless steel hose clamp (included)
- Universal fitment; fits most Original Equipment mufflers
- Tough 5052 laser-cut aluminum

DESCRIPTION	PART #
Small: 15 cm x 76 mm (6" x 3")	1861-1726



1861-1726



DESCRIPTION	PART #
Large: 20,5 cm x 89 mm (8" x 3,5")	1861-1727

ADVENTURE BIKE REAR RACK UNIVERSAL MOUNTING PLATES

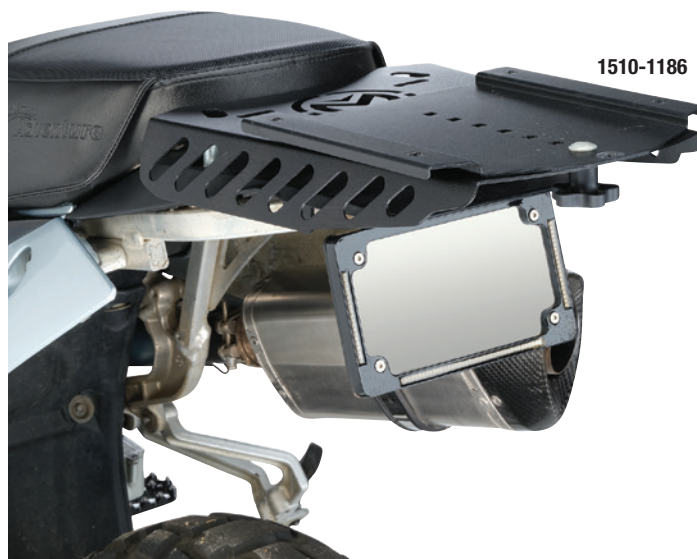
- Use in conjunction with Adventure Bike Rear Racks (sold separately), these mounting plates increase overall rack surface area for a variety of basic plastic storage cases or larger soft luggage bags to be securely installed
- Easily attaches to Rear Rack with predrilled holes and locking tabs in several locations to mount more forward or back on the rear rack surface
- Available in two sizes – small: 15 cm x 20,5 cm (6" x 8") and large 20,5 cm x 35,5 cm (8" x 14")
- Attaches by locking in the tabs to rear rack and tightens down with a hand knob included in kit
- All mounting hardware and installation instructions included along with a threaded hand knob to install any variety of hard cases with center thread inserts

ADVENTURE BIKE REAR RACK UNIVERSAL MOUNTING PLATES

DESCRIPTION	PART #
Small: 15 cm x 20,5 cm (6" x 8")	1510-1190

ADVENTURE BIKE REAR RACK FITMENT CHART

FITS MODEL	PART #
APRILIA	
Tuareg 660 22-23	1510-1187
HONDA	
XR650L 93-24	1510-1211



1510-1186

ADVENTURE BIKE REAR RACKS

- Add convenient storage and function to your Adventure bike with one of these durable rear racks
- Laser-cut from 12-gauge grade 50 steel with durable matte black powdercoat finish
- Multiple tie-down locations and slots for bag straps or bungees
- Add additional storage capability with optional Universal Attachment Plates (sold separately)
- All mounting hardware and instruction included

DESCRIPTION	PART #
Large: 20,5 cm x 35,5 cm (8" x 14")	1510-1191

FITS MODEL	PART #
SUZUKI	
DR-Z400S 00-23	1510-1199
YAMAHA	
Tenere 700 21-23	1510-1186



DOOR BAGS

- Made from 1680D water-resistant material to keep mud and rain from penetrating the bag
- Double-ended, waterproof zippers
- Provides excellent protection against abrasions, wear, tear and dust

CFMOTO

- Extra storage space with two large pockets and two side pockets
- Main pockets can be used for maps, wallet, keys and important documents such as vehicle registration or fishing/hunting licenses
- Side pockets provide room for phones, gloves, sunglasses and small gadgets
- Extended zipper pulls for easy operation even while wearing gloves

HONDA

- Extra space to store your phone, sunglasses, keys and towels
- Built-in knee pad is thick and comfortable, protecting your knee from hitting the door
- Only works on lower doors
- Water repellent compartment inside to prevent water from seeping through installation holes at the back

FITS MODEL	PART #
CFMOTO	
ZFORCE 950 H.O. Sport/Ex 22-24	3540-0077
ZFORCE 950 Sport 20-24	3540-0077



3540-0077

POLARIS

- Integrated knee pads
- Can remove knee pad to increase storage space
- Extended waterproof zipper prevents dust or mud from accumulating on surface
- Prevents rainwater from directly falling on zipper area

FITS MODEL	PART #
HONDA	
Talon 1000R/1000X/1000X4 19-23 (only on lower door)	3540-0078
POLARIS	
RZR Pro XP4 20-24	3540-0079

TRAIL BAG

- Large capacity trail bag easily stores trash, trail gear, camping supplies and more
- Made from durable, rip-resistant PVC mesh material
- Measures 19" x 25"
- Secures with ball-style bungee straps



DESCRIPTION	PART #
Trail bag	3540-0081



XTREM SKID PLATES WITH INTEGRATED LINKAGE GUARD

- Made from high-density polyethylene construction
- 8 mm thick HDPE offers more protection than the standard Pro Skid Plate
- Full linkage protection
- 40% lighter than aluminum and no rattling
- Mounting hardware and installation instructions included

FITS MODEL	PART #
BETA	
RR 4T 350 23-24	0506-2282
RR 4T 390 23-24	0506-2282
RR 4T 430 23-24	0506-2282

FITS MODEL	PART #
BETA (CONT)	
RR 4T 480 23-24	0506-2282
Xtrainer 250/300 16-24	0506-2306



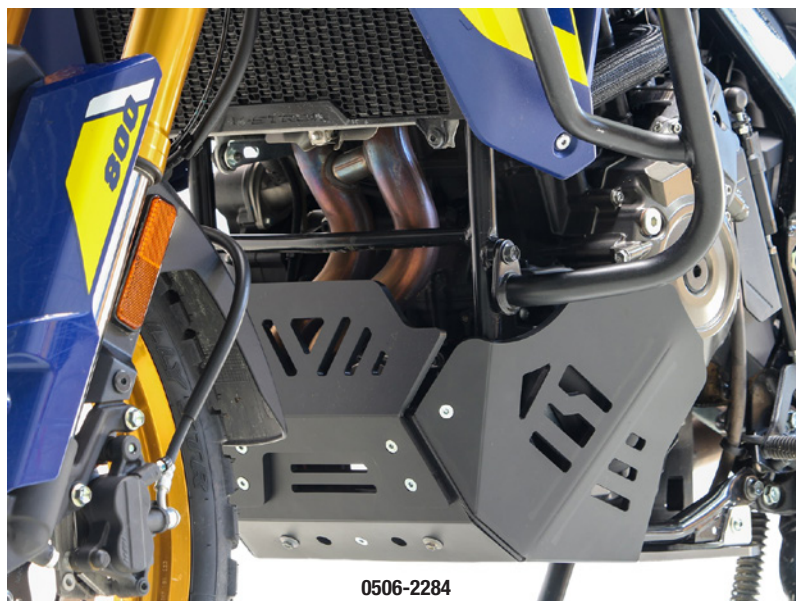
FITS MODEL	PART #
YAMAHA	
YZ250F 24	0506-2287

PRO SKID PLATES

- Made from a flexible high-density polyethylene
- HDPE is an excellent material: a technical plastic that offers many characteristics to protect your bike
- 6 mm thick for maximum protection of the frame and cases
- Goes through a thermoforming process and is welded
- 40% lighter than 4 mm aluminum
- No more vibrating or rattling
- Mounting hardware and installation instructions included

FITS MODEL	PART #
APRILIA	
Tuareg 600 20-24	0506-2283¹
GASGAS	
MC 65 24	0506-2307
MC 85 21-24	0506-2281
MC 250 24	0506-2281
MC 450F 24	0506-2281
EC 250 24	0506-2281
EC 300 24	0506-2281
EC 450F 24	0506-2281
EC 500F 24	0506-2281
EX 250 24	0506-2281
EX 300 24	0506-2281
EX 450F 24	0506-2281
EW 500F 24	0506-2281

FITS MODEL	PART #
HUSQVARNA	
FC 450 23-24	0506-2307
TC 65 24	0506-2307
TC 250 23-24	0506-2307
FE 450 24	0506-2307
FE 501 24	0506-2307
FX 450 23-24	0506-2307
KTM	
SX-F 450 23-24	0506-2307
SX 65 24	0506-2307
SX 85 18-24	0506-2307
SX 250 23-24	0506-2307
EXC-F 450 24	0506-2307
EXC-F 500 24	0506-2307
EXC 250 24	0506-2307



0506-2284

FITS MODEL	PART #
KTM (CONT)	
EXC 300 24	0506-2307
XC 250 23-24	0506-2307
XC 300 23-24	0506-2307
XW-F 500 24	0506-2307
KAWASAKI	
KX450 24	0506-2285
SUZUKI	
V-Strom 800DE 22-24	0506-2284¹
YAMAHA	
YZ125 05-24	0506-2280
YZ250F 24	0506-2286

¹ 8 mm Adventure skid plate.



THROTTLE CABLES

- Black PVC outer jacket for maximum flexibility and durability
- Steel inner casing is tightly coiled for low compression ratios
- A pre-lubricated nylon inner sleeve guarantees smooth operation and long life
- All wire ends are bird-caged prior to terminal casting for superior pull-out resistance
- EPDM molded rubber components for high UV resistance and long life
- Injected-molded components are manufactured from high-strength POM material

FITS MODEL	PART #
CAN-AM	
Outlander 330 04-05	0650-2090
Outlander 330 4x4 05	0650-2090
Outlander 400 03-04	0650-2090
Outlander 400 4x4 05-08	0650-2090
Outlander 400 XT 4x4 04-08	0650-2090

FITS MODEL	PART #
CAN-AM (CONT)	
Outlander Max 400 STD 4x4 05-08	0650-2090
Outlander Max 400 XT 4x4 06-08	0650-2090
POLARIS	
Sportsman 570 6x6 19-22	0650-2083
Sportsman 570 6x6 Euro 19-20	0650-2083

FITS MODEL	PART #
POLARIS (CONT)	
Sportsman 570 EFI X2 EPS 18-21	0650-2083
Sportsman 570 Touring EFI 16-23	0650-2083
Sportsman 570 Touring Premium 20-22	0650-2083
Sportsman 570 Touring SP 16-20	0650-2083



CONTROL CABLES

- Clutch and throttle cable assemblies
- Black PVC outer jacket for maximum flexibility and durability
- Steel inner casing is tightly coiled for low compression ratios
- A pre-lubricated nylon inner sleeve guarantees smooth operation and long life
- All wire ends are bird-caged prior to terminal casting for superior pull-out resistance
- EPDM molded rubber components for high UV resistance and long life
- Injected-molded components are manufactured from high-strength POM material

FITS MODEL	DESCRIPTION	PART #
GASGAS		
MC 125/250 24	Throttle (push/pull)	0650-2087
EC 250/300 24	Throttle (push/pull)	0650-2087
EX 250/300 24	Throttle (push/pull)	0650-2087
FANTIC		
XXF 250 21-24	Clutch	0652-3105
	Throttle (push/pull)	0650-2088
XXF 450 22	Clutch	0652-3105
XX 125 22-24	Throttle (pull)	0650-2089
XEF 250 21-23	Clutch	0652-3105
	Throttle (push/pull)	0650-2088
XEF 250 24	Throttle (push/pull)	0650-2088
XEF 310 24	Throttle (push/pull)	0650-2088
XEF 450 22	Clutch	0652-3105
XE 125 23-24	Throttle (pull)	0650-2089

FITS MODEL	DESCRIPTION	PART #
HONDA		
CRF250R 22-24	Clutch	0652-3104
CRF250RX 22-24	Clutch	0652-3104
HUSQVARNA		
TC 125 23-24	Throttle (push/pull)	0650-2087
TC 250 23-24	Throttle (push/pull)	0650-2087
TE 150 24	Throttle (push/pull)	0650-2087
TE 250 24	Throttle (push/pull)	0650-2087
TE 300 24 (all)	Throttle (push/pull)	0650-2087
KTM		
SX 125 23-24	Throttle (push/pull)	0650-2087
SX 250 23-24	Throttle (push/pull)	0650-2087
EXC 150 24	Throttle (push/pull)	0650-2087
EXC 250 24	Throttle (push/pull)	0650-2087
EXC 300/ Hardenduro 24	Throttle (push/pull)	0650-2087

FITS MODEL	DESCRIPTION	PART #
KTM (CONT)		
XC 125 23-24	Throttle (push/pull)	0650-2087
XC 250 23-24	Throttle (push/pull)	0650-2087
XC 300 23-24	Throttle (push/pull)	0650-2087
XC-W 150 24	Throttle (push/pull)	0650-2087
YAMAHA		
YZ125 22-24	Throttle (pull)	0650-2089
YZ125X 23-24	Throttle (pull)	0650-2089
YZ250F 19-23	Clutch	0652-3105
YZ250FX 20-24	Clutch	0652-3105
	Throttle (push/pull)	0650-2088
YZ450F 18-22	Clutch	0652-3105
YZ450F 19-23	Clutch	0652-3105
WR250F 20-24	Throttle push/pull)	0650-2088



HANDLEBAR END MIRRORS

- To ensure optimal visibility of the traffic, mirror offers the flexibility of dual adjustable positions that can be continuously adjusted
- Plug-and-play design, mirrors can be easily mounted on your motorcycle and adjusted to your personal, ergonomic needs
- Features a universal clamp, the mirror is suitable for most models and offers simple and secure attachment
- Delicate look ensures that the mirror blends seamlessly into the overall design of the vehicle without being obtrusive
- Simple and space-saving installation directly on the handlebar end, for optimal visibility without impairment
- Offers an optimal balance between weight and strength, resulting in improved performance and longevity
- Made of high-strength aluminum, a material known for its exceptional strength, durability and lightness
- Can be used on either the left or right side
- Mirror thickness – 6 mm
- Mirror weight – 600 g
- Symmetrical
- Sold each



0640-1785



0640-1786

DESCRIPTION	BLACK PART #	BLACK/MATTE PART #
Stratos	0640-1785	0640-1786
Moon	0640-1787	0640-1788



QUALIFIER FOOTPEGS

- Two-piece lightweight footpeg design
- CNC-machined aluminum alloy construction
- Extra-wide replaceable stainless steel footplate providing the rider with ultimate grip
- The stainless steel footplate also sits inside a rubber damper, helping to absorb shock
- Use your OEM springs
- Replacement footplate PART #1620-1738 available separately



STREET

FITS MODEL	PART #
BMW	
F 850 GS Adventure 17-24	1620-2628
R 1200 GS 12-18	1620-2627
R 1250 GS 12-23	1620-2627
HONDA	
NC750X ABC DCT 14, 16-21, 23	1620-2619
CRF1000A Africa Twin 16-17	1620-2618
CRF1000L Africa Twin 18-19	1620-2620
CRF1100L Africa Twin 20-24	1620-2620

FITS MODEL	PART #
HUSQVARNA	
Norden 901 22-23	1620-2626
KTM	
790 Adventure 19-20	1620-2626
890 Adventure 21	1620-2626
990 Adventure 06-12	1620-2626
1050/1090 Adventure (all)	1620-2626
1190 Adventure (all)	1620-2626
1290 Super Adventure R (all)	1620-2626

FITS MODEL	PART #
SUZUKI	
DR-Z400S 00-24	1620-2624
DR650SE 96-24	1620-2621
V-Strom 650XT 15	1620-2622
V-Strom 1000XT 18-19	1620-2622
V-Strom 1050XT 20-21	1620-2623
TRIUMPH	
Tiger 900 Rally 20-24	1620-2630
Tiger 1200 Explorer 12-22	1620-2630
Tiger 1200 Rally Explorer 22-23	1620-2630

OFFROAD

FITS MODEL	PART #
HONDA	
CRF110F 13-23	1620-2632

FITS MODEL	PART #
KTM	
SX 125/250 23	1620-2581

FITS MODEL	PART #
YAMAHA	
YZ450F/Monster 23	1620-2631



FOOTPEG SPRING AND PIN KITS

- Designed to replace OEM stock footpeg pin and spring
- Will work with most aftermarket footpegs
- Includes two OEM replacement springs, two OEM replacement pins, two washers and two cotter keys



1620-2633

FITS MODEL	PART #
SHERCO	
50 SM-R 20-21	1620-2635

FITS MODEL	PART #
YAMAHA	
YZ450F 23-24	1620-2634

FITS MODEL	PART #
YAMAHA (CONT)	
YZ450F 23-24	1620-2633



BATTERY TERMINAL RELOCATION KIT

- Equipped with waterproof dust cap to block mud, water and sand to enhance durability
- Brass terminal provides excellent electrical conductivity, stability and corrosion resistance
- Adopts copper wiring harness and terminal to meet the applicable requirement of 150A high current
- Easy to install; universal fitment



DESCRIPTION

Battery terminal relocation kit

PART #

2120-1357



2113-0966



2113-0965

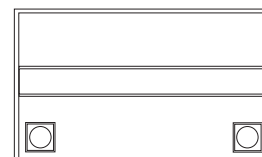


2113-0964



SLA FACTORY-ACTIVATED AGM MAINTENANCE-FREE BATTERIES

- AGM construction (Absorbed Glass Material)
- VRLA battery (Valve Regulated Lead Acid)
- Sealed and factory activated
- Spillproof design
- Multi-positional fitment
- Ready and easy to use
- Increased power and extended life
- Extreme vibration resistance



YUASA REFERENCE #	CAPACITY AH (10HR)	CAPACITY AH (20HR)	CCA (EN) A (-18 °C)	LENGTH (MM)	WIDTH (MM)	HEIGHT (MM)	APPROX. WEIGHT (KG.)	TERMINAL CONFIGURATION	PART #
YBTR4A-5	2,3	2,4	35	113	48	85	0,96	++ (both terminals on left side)	2113-0966
YB3L-A/B	3	3,2	35	98	56	110	1,20	-	2113-0965
12N5.5-4A	5	5,8	70	135	60	130	2,31	+	2113-0964



PA01 EYELET TERMINAL CONNECTORS

- Fused ring terminal leadset is the ideal solution if your battery is difficult to access
- Easy to connect
- Safe: connection spark free, reverse polarity, short circuit and internal overheat protection
- For all 12V vehicle and motorcycles batteries
- Compatible with BS 10, BS 15, BS 30 and BK 20 chargers
- 2 x M6 eyelets (1/4")
- 3A fuse
- Wire 61 cm (24")/0,82 mm² (18AWG)



3807-0745



3807-0744

DESCRIPTION

PA01 eyelet terminal connector (ea.)

PART #

3807-0745

DESCRIPTION

PA01 eyelet terminal connectors (jar of 20)

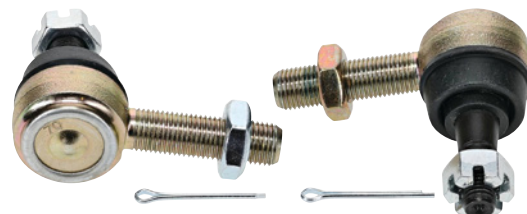
PART #

3807-0744



TIE-ROD END KITS FOR CFMOTO

- Kit includes inner and outer tie rod ends that are designed to repair lose and worn parts
- Sold in kits for one tie-rod; two kits required per vehicle



FITS MODEL	PART # (2 KITS REQUIRED PER VEHICLE)
CFORCE 400 AU 16-22	0430-1297
CFORCE 500 S 17-22	0430-1297

FITS MODEL	PART # (2 KITS REQUIRED PER VEHICLE)
CFORCE 600 20-22	0430-1297
CFORCE 600 Touring 20-22	0430-1297



0430-1380

TIE-ROD ASSEMBLY UPGRADE KITS

- Upgrade from 10 mm tie-rod ends that are prone to failure to Moose's heavy-duty 12 mm style tie-rod assemblies
- Each kit contains two tie-rods and four tie-rod ends, along with cotter pins and jam nuts



FITS MODEL	PART #
CFMOTO	
CFORCE 400 AU 16-22	0430-1380
CFORCE 500 HO 14-18	0430-1379
CFORCE 500 S 15-16	0430-1379
CFORCE 500 S 17-22	0430-1380
CFORCE 600 19	0430-1379
CFORCE 600 20-22	0430-1378
CFORCE 600 Touring 20-22	0430-1378
CFORCE 800 15-17	0430-1379

FITS MODEL	PART #
POLARIS	
Sportsman 570 EPS EU SP 18-19	0430-1381
Sportsman 570 EPS Quad 16	0430-1381
Sportsman 570 EPS Tractor 16	0430-1381
Sportsman 570 Latin 20	0430-1381
Sportsman 570 Premium 22	0430-1381
Sportsman 570 SP 15-20	0430-1381
Sportsman 570 SP EPS Quad 15-16	0430-1381
Sportsman 570 SP EPS Tractor 15-19	0430-1381

FITS MODEL	PART #
POLARIS (CONT)	
Sportsman 570 SP MD 15-16	0430-1381
Sportsman 570 Trail 21-23	0430-1381
Sportsman 570 Ultimate Trail LE 21-22	0430-1381
Sportsman Touring 570 EFI 23	0430-1381
Sportsman Touring 570 EPS Tractor SP 18-19	0430-1381
Sportsman Touring 570 Premium 20-22	0430-1381
Sportsman Touring 570 SP 15-20	0430-1381

BALL JOINT KITS

- Ball joint kit is sold per A-arm and comes with snap ring and cotter pin
- Ball joints feature heavy-duty steel cases with POM-M90 bearing material for long life
- Put an end to premature Honda ball joint failure by upgrading from the OEM aluminum joint to our heavy-duty steel joint

0430-1356



0430-1359



FITS MODEL	LOWER BALL JOINT KIT PART #	UPPER BALL JOINT KIT PART #
CAN-AM		
Outlander 400 STD 4x4 06-15	0430-1356	-
Outlander 400 XT 4x4 06-14	0430-1356	-
Outlander Max 400 STD 4x4 06-15	0430-1356	-
Outlander Max 400 XT 4x4 06-15	0430-1356	-
Outlander 500 LTD 4x4 10	0430-1356	-
Outlander 500 STD 4x4 07-12	0430-1356	-
Outlander 500 XT 4x4 07-12	0430-1356	-
Outlander Max 500 STD 4x4 07-12	0430-1356	-
Outlander Max 500 XT 4x4 07-12	0430-1356	-
Outlander 650 STD 4x4 06-12	0430-1356	-
Outlander 650 XT 4x4 06-12	0430-1356	-
Outlander Max 650 STD 4x4 06-12	0430-1356	-
Outlander Max 650 XT 4x4 06-12	0430-1356	-

FITS MODEL	LOWER BALL JOINT KIT PART #	UPPER BALL JOINT KIT PART #
CAN-AM (CONT)		
Outlander Max 650 XTP 4x4 10-12	0430-1356	-
Outlander 800 STD 4x4 06-08	0430-1356	-
Outlander 800 XMR 11-12	0430-1356	-
Outlander 800 XT 4x4 06-08	0430-1356	-
Outlander 800 XXC 11	0430-1356	-
Outlander 800R STD 4x4 09-11	0430-1356	-
Outlander 800R XT 4x4 09-11	0430-1356	-
Outlander 800R XTP 4x4 11	0430-1356	-
Outlander Max 800 LTD 4x4 07-08	0430-1356	-
Outlander Max 800 STD 4x4 06-08	0430-1356	-
Outlander Max 800 XT 4x4 06-08	0430-1356	-
Outlander Max 800R LTD 4x4 09-12	0430-1356	-
Outlander Max 800R STD 4x4 09-11	0430-1356	-

BALL JOINT KITS continued on next page.



BALL JOINT KITS (CONT)

FITS MODEL	LOWER BALL JOINT KIT PART #	UPPER BALL JOINT KIT PART #
CAN-AM (CONT)		
Outlander Max 800R XT 4x4 09-12	0430-1356	-
Outlander Max 800R XTP 4x4 10-11	0430-1356	-
HONDA		
Pioneer 1000 22-23	-	0430-1359
Pioneer 1000 Deluxe 22-23	-	0430-1359
Pioneer 1000 Forest 22-23	-	0430-1359
Pioneer 1000 Trail 22-23	-	0430-1359
Pioneer 1000-5 22-23	-	0430-1359
Pioneer 1000-5 Deluxe 22-23	-	0430-1359
Pioneer 1000-5 Forest 22-23	-	0430-1359
Pioneer 1000-5 Trail 22-23	-	0430-1359
Pioneer 1000-6 Deluxe 23	-	0430-1359
POLARIS		
RZR Pro R/4 22	0430-1377	
YAMAHA		
Viking 700 14-20	0430-1357	0430-1357
Viking 700 EPS 18-23	0430-1357	0430-1357
Viking 700 EPS Hunter 17-20	0430-1357	0430-1357
Viking 700 EPS Ranch 23	0430-1357	0430-1357
Viking 700 EPS Red/Green 18	0430-1357	0430-1357
Viking 700 Hunter 14-16	0430-1357	0430-1357
Viking 700 VI EPS 15-23	0430-1357	0430-1357
Viking 700 VI EPS Hunter 16-22	0430-1357	0430-1357
Viking 700 VI EPS Ranch 16-23	0430-1357	0430-1357
Wolverine 16-18	0430-1357	0430-1357
Wolverine EPS 17	0430-1357	0430-1357
Wolverine R-Spec 16	0430-1357	0430-1357

FITS MODEL	LOWER BALL JOINT KIT PART #	UPPER BALL JOINT KIT PART #
YAMAHA (CONT)		
Wolverine R-Spec EPS 16-18	0430-1357	0430-1357
Wolverine R-Spec EPS SE 16-17	0430-1357	0430-1357
Wolverine R-Spec Hunter 18	0430-1357	0430-1357
Wolverine X2 19-20	0430-1357	0430-1357
Wolverine X2 R-Spec 19-23	0430-1357	0430-1357
Wolverine X2 XT-R 20-23	0430-1357	0430-1357
Wolverine X4 18-21	0430-1357	0430-1357
Wolverine X4 Hunter 18-20	0430-1357	0430-1357
Wolverine X4 R-Spec 22-23	0430-1357	0430-1357
Wolverine X4 SE 18-19	0430-1357	0430-1357
Wolverine X4 XT-R 20-23	0430-1357	0430-1357
Wolverine RMAX2 21	0430-1358	0430-1358
Wolverine RMAX2 LE 21-23	0430-1358	0430-1358
Wolverine RMAX2 R-Spec 22-23	0430-1358	0430-1358
Wolverine RMAX2 SPORT 22-23	0430-1358	0430-1358
Wolverine RMAX2 XT-R 21-23	0430-1358	0430-1358
Wolverine RMAX4 21	0430-1358	0430-1358
Wolverine RMAX4 LE 21-23	0430-1358	0430-1358
Wolverine RMAX4 R-Spec 22-23	0430-1358	0430-1358
Wolverine RMAX4 XT-R 21-23	0430-1358	0430-1358
YXZ1000R EPS 16-23	0430-1358	0430-1358
YXZ1000R EPS SE 17-20	0430-1358	0430-1358
YXZ1000R EPS SS 17-22	0430-1358	0430-1358
YXZ1000R EPS SS SE 17-21	0430-1358	0430-1358
YXZ1000R EPS SS XTR 20-23	0430-1358	0430-1358
YXZ1000R SE 16	0430-1358	0430-1358



UTV STEERING RACKS

- Replaces a complete steering rack at a fraction of the price of OEM
- Includes rack assembly, inner tie-rod ends and tie-rods
- Includes both tie-rods
- Compatible with OEM and Moose tie-rods, boots and tie-rod ends

FITS MODEL	PART #
HONDA	
Pioneer 500 15-23	0430-1353
Pioneer 520 21-23	0430-1353
Pioneer 700 14-23	0430-1352
Pioneer 700 Deluxe 17-23	0430-1352
Pioneer 700 Forest 23	0430-1352
Pioneer 700-4 14-23	0430-1352
Pioneer 700-4 Deluxe 17-23	0430-1352
Pioneer 700-4 Forest 23	0430-1352

FITS MODEL	PART #
HONDA (CONT)	
Pioneer 1000 16-21	0430-1354
Pioneer 1000 Deluxe 20-21	0430-1354
Pioneer 1000 Limited 17-21	0430-1354
Pioneer 1000-5 16-21	0430-1354
Pioneer 1000-5 Deluxe 16-21	0430-1354
Pioneer 1000-5 Limited 17-21	0430-1354
KAWASAKI	
Mule PRO-FX 800 16-23	0430-1341

FITS MODEL	PART #
KAWASAKI (CONT)	
Mule PRO-FX 800 EPS 16-22	0430-1341
Mule PRO-FX 800 LE 16-22	0430-1341
Mule PRO-FX 800 Ranch 17	0430-1341
Mule PRO-FXR 800 18-22	0430-1341
Mule PRO-FXT 800 15-22	0430-1341
Mule PRO-FXT 800 EPS 15-20	0430-1341
Mule PRO-FXT 800 EPS Camo 15-19	0430-1341
Mule PRO-FXT 800 EPS LE 15-20	0430-1341



UTV STEERING RACKS continued on next page.



UTV STEERING RACKS (CONT)

FITS MODEL	PART #
KAWASAKI (CONT)	
Mule PRO-FXT 800 Ranch 16-22	0430-1341
Mule PRO-FXT EPS LE 21-22	0430-1341
Mule PRO-DX 16-18	0430-1341
Mule PRO-DX EPS 21-22	0430-1341
Mule PRO-DXT 16-22	0430-1341
Mule PRO-DXT EPS 21-22	0430-1341
Mule PRO-DXT EPS LE 22	0430-1341
POLARIS	
Ranger EV 4x4 16	0430-1348
Ranger 325 ETX 16	0430-1348
Ranger 570 16	0430-1348
Ranger 570 Crew 16	0430-1348
Ranger 570 Crew Camo 16	0430-1348
Ranger 570 Crew EPS 16	0430-1348
Ranger 570 EPS 16	0430-1348
Ranger 570 EU 16	0430-1348
Ranger 570 Full Size Crew 16	0430-1348
Ranger 570 Hunter Edition 16	0430-1348
RZR Turbo S 21	0430-1349
RZR Turbo S 4 21	0430-1349

FITS MODEL	PART #
POLARIS (CONT)	
RZR Turbo S 4 Velocity 21	0430-1349
RZR Turbo S Velocity 21	0430-1349
RZR Turbo Pro XP 20	0430-1350
RZR Turbo Pro XP 4 20	0430-1350
RZR Turbo Pro XP 4 Premium 20-23	0430-1350
RZR Turbo Pro XP 4 Sport 21-23	0430-1350
RZR Turbo Pro XP 4 Ultimate 20-23	0430-1350
RZR Turbo Pro XP Premium 20-23	0430-1350
RZR Turbo Pro XP Sport 21-23	0430-1350
RZR Turbo Pro XP Ultimate 20-22	0430-1350
RZR XP 4 Turbo S 19-20	0430-1349
RZR XP 4 Turbo S Velocity 19-20	0430-1349
RZR XP Turbo S 18-20	0430-1349
RZR XP Turbo S Velocity 20	0430-1349
RZR XP 1000 Premium 21	0430-1350
RZR XP 1000 Sport 21	0430-1350
YAMAHA	
Viking 700 14-20	0430-1355
Viking 700 EPS 18-23	0430-1355
Viking 700 EPS Hunter 17-20	0430-1355

FITS MODEL	PART #
YAMAHA (CONT)	
Viking 700 EPS Ranch 23	0430-1355
Viking 700 EPS Red/Green 18	0430-1355
Viking 700 Hunter 14-16	0430-1355
Viking 700 VI EPS 15-23	0430-1355
Viking 700 VI EPS Hunter 16-22	0430-1355
Viking 700 VI EPS Ranch 16-23	0430-1355
Wolverine 16-18	0430-1355
Wolverine EPS 17	0430-1355
Wolverine R-Spec 16	0430-1355
Wolverine R-Spec EPS 16-18	0430-1355
Wolverine R-Spec EPS SE 16-17	0430-1355
Wolverine R-Spec Hunter 18	0430-1355
YXZ1000R EPS 16-23	0430-1351
YXZ1000R EPS SE 17-20	0430-1351
YXZ1000R EPS SS 17-22	0430-1351
YXZ1000R EPS SS SE 17-21	0430-1351
YXZ1000R EPS SS XTR 20-23	0430-1351
YXZ1000R SE 16	0430-1351



UTV STEERING RACK TIE ROD ASSEMBLY KITS

- UTV steering rack rod ends will save your customer hundreds of dollars of the cost of a complete steering rack assembly
- The inner rod assemblies have increased shaft diameters to improve their strength; each kit includes heavy-duty inner and outer rod ends with replacement boot, clamps and any required lock washers; outer tie rod ends are also available individually
- Tie Rod End Kit, outer only – contains one tie rod end; this end attaches to the steering knuckle (two required per vehicle)
- Tie Rod End Kit Left, Inner and outer – contains both tie rod end and shaft that connects to the steering rack as well as the outer tie rod end; kit also contains a boot and required hardware for the left (driver) side
- Tie Rod End Kit Right, Inner and outer – contains both tie rod end and shaft that connects to the steering rack as well as the outer tie rod end; kit also contains a boot and required hardware for the right (passenger) side



UTV STEERING RACK TIE ROD ASSEMBLY KITS

FITS MODEL	OUTER TIE-ROD END KIT PART # (2 REQUIRED PER VEHICLE)	RACK TIE ROD KIT (LEFT) PART #	RACK TIE ROD KIT (RIGHT) PART #
CAN-AM			
Commander 700 DPS 22-23	-	0430-1291	0430-1292
Commander 700 XT 22-23	-	0430-1291	0430-1292
Maverick Trail 700 22	-	0430-1362	0430-1363
Maverick Trail 700 23	-	0430-1362	-
Maverick Trail 700 DPS 22	-	0430-1362	0430-1363
Maverick Trail 700 DPS 23	-	0430-1362	-

FITS MODEL	OUTER TIE-ROD END KIT PART # (2 REQUIRED PER VEHICLE)	RACK TIE ROD KIT (LEFT) PART #	RACK TIE ROD KIT (RIGHT) PART #
CAN-AM (CONT)			
Commander 800R DPS 20	-	0430-1289	0430-1290
Commander 800R STD 20	-	0430-1289	0430-1290
Commander 800R XT 20	-	0430-1289	0430-1290
Commander Max 800R DPS 20	-	0430-1289	0430-1290
Defender 800 DPS CAB 21	-	0430-1364	0430-1365
Defender 800 XT Cab 18-20	-	0430-1364	0430-1365

UTV STEERING RACK TIE ROD ASSEMBLY KITS continued on next page.



UTV STEERING RACK TIE ROD ASSEMBLY KITS (CONT)

UTV STEERING RACK TIE ROD ASSEMBLY KITS (CONT)

FITS MODEL	OUTER TIE-ROD END KIT PART # (2 REQUIRED PER VEHICLE)	RACK TIE ROD KIT (LEFT) PART #	RACK TIE ROD KIT (RIGHT) PART #
CAN-AM (CONT)			
Maverick Trail 800R 18-21	-	0430-1362	0430-1363
Maverick Trail 800R DPS 18-21	-	0430-1362	0430-1363
Commander 1000R DPS 20	-	0430-1289	0430-1290
Commander 1000R DPS 21-22	-	0430-1291	0430-1292
Commander 1000R DPS 23	-	0430-1291	-
Commander 1000R LTD 20	-	0430-1289	0430-1290
Commander 1000R X MR 22	-	0430-1298	0430-1299
Commander 1000R X MR 23	-	0430-1298	-
Commander 1000R XT 20	-	0430-1289	0430-1290
Commander 1000R XT 21-22	-	0430-1298	0430-1299
Commander 1000R XT 23	-	0430-1298	-
Commander 1000R XT-P 21-22	-	0430-1298	0430-1299
Commander 1000R XT-P 23	-	0430-1298	-
Commander Max 1000R DPS 21-22	-	0430-1291	0430-1292
Commander Max 1000R DPS 23	-	0430-1291	-
Commander Max 1000R LTD 20	-	0430-1289	0430-1290
Commander Max 1000R XT 20	-	0430-1289	0430-1290
Commander Max 1000R XT 21-22	-	0430-1298	0430-1299
Commander Max 1000R XT 23	-	0430-1298	-
Commander Max 1000R XT-P 22	-	0430-1298	0430-1299
Commander Max 1000R XT-P 23	-	0430-1298	-
Defender 1000 DPS 20-23	-	0430-1295	0430-1296
Defender 1000 DPS 6x6 20-23	-	0430-1295	0430-1296
Defender 1000 LTD Cab 21-22	-	0430-1364	0430-1365
Defender 1000 LTD Cab 6x6 22	-	0430-1364	0430-1365
Defender 1000 PRO DPS 20-23	-	0430-1295	0430-1296
Defender 1000 PRO Lone Star 21-22	-	0430-1364	0430-1365
Defender 1000 PRO LTD 22	-	0430-1364	0430-1365
Defender 1000 PRO LTD Cab 21	-	0430-1364	0430-1365
Defender 1000 PRO XT 20-23	-	0430-1295	0430-1296
Defender 1000 X MR 18-22	-	0430-1364	0430-1365
Defender 1000 XT 20-23	-	0430-1295	0430-1296
Defender 1000 XT 6x6 21-23	-	0430-1295	0430-1296
Defender 1000 XT Cab 18-20	-	0430-1364	0430-1365
Defender 1000 XT-P 20	-	0430-1295	0430-1296
Defender Max 1000 DPS 20-23	-	0430-1295	0430-1296
Defender Max 1000 Lone Star 18-22	-	0430-1364	0430-1365
Defender Max 1000 Lone Star Cab 22	-	0430-1364	0430-1365
Defender Max 1000 LTD 21	-	0430-1364	0430-1365
Defender Max 1000 LTD Cab 20-22	-	0430-1364	0430-1365
Defender Max 1000 X MR 19-22	-	0430-1364	0430-1365
Defender Max 1000 XT 20-23	-	0430-1295	0430-1296
Defender Max 1000 XT Cab 18-19	-	0430-1364	0430-1365
Maverick Sport 1000 19-23	-	0430-1291	0430-1292
Maverick Sport 1000 DPS 19-20	-	0430-1291	0430-1292
Maverick Sport 1000R DPS 19-22	-	0430-1291	0430-1292
Maverick Sport 1000R DPS 23	-	0430-1291	-
Maverick Sport 1000R X MR 19-22	-	0430-1298	0430-1299

FITS MODEL	OUTER TIE-ROD END KIT PART # (2 REQUIRED PER VEHICLE)	RACK TIE ROD KIT (LEFT) PART #	RACK TIE ROD KIT (RIGHT) PART #
CAN-AM (CONT)			
Maverick Sport 1000R X MR 23	-	0430-1298	-
Maverick Sport 1000R X RC 19-22	-	0430-1298	0430-1299
Maverick Sport 1000R X RC 23	-	0430-1298	-
Maverick Sport 1000R XXC 20-22	-	0430-1298	0430-1299
Maverick Sport 1000R XXC 23	-	0430-1298	-
Maverick Sport Max 1000R DPS 19-22	-	0430-1291	0430-1292
Maverick Sport Max 1000R DPS 23	-	0430-1291	-
Maverick Trail 1000 18-20	-	0430-1362	0430-1363
Maverick Trail 1000 DPS 18-22	-	0430-1362	0430-1363
Maverick Trail 1000 DPS 23	-	0430-1362	-
HONDA			
Pioneer 500 15-23	-	0430-1368	0430-1368
Pioneer 520 21-23	-	0430-1368	0430-1368
Pioneer 1000 22-23	-	0430-1371	0430-1371
Pioneer 1000 Deluxe 22-23	-	0430-1371	0430-1371
Pioneer 1000 Forest 22-23	-	0430-1371	0430-1371
Pioneer 1000 Trail 22-23	-	0430-1371	0430-1371
Pioneer 1000-5 22-23	-	0430-1371	0430-1371
Pioneer 1000-5 Deluxe 22-23	-	0430-1371	0430-1371
Pioneer 1000-5 Forest 22-23	-	0430-1371	0430-1371
Pioneer 1000-5 Trail 22-23	-	0430-1371	0430-1371
KAWASAKI			
Mule PRO-FX 800 16-23	-	0430-1308	0430-1308
Mule PRO-FX 800 EPS 16-22	-	0430-1308	0430-1308
Mule PRO-FX 800 LE 16-22	-	0430-1308	0430-1308
Mule PRO-FX 800 Ranch 17	-	0430-1308	0430-1308
Mule PRO-FXR 800 18-22	-	0430-1308	0430-1308
Mule PRO-FXT 800 15-22	-	0430-1308	0430-1308
Mule PRO-FXT 800 EPS 15-20	-	0430-1308	0430-1308
Mule PRO-FXT 800 EPS Camo 15-19	-	0430-1308	0430-1308
Mule PRO-FXT 800 EPS LE 15-20	-	0430-1308	0430-1308
Mule PRO-FXT 800 Ranch 16-22	-	0430-1308	0430-1308
Mule PRO-FXT EPS LE 21-22	-	0430-1308	0430-1308
Mule PRO-DX 16-18	-	0430-1308	0430-1308
Mule PRO-DX EPS 21-22	-	0430-1308	0430-1308
Mule PRO-DXT 16-22	-	0430-1308	0430-1308
Mule PRO-DXT EPS 21-22	-	0430-1308	0430-1308
Mule PRO-DXT EPS LE 22	-	0430-1308	0430-1308
POLARIS			
Ranger 570 EU 15	-	0430-1366	0430-1367
Ranger 570 Full Size 17-23	-	0430-1293	0430-1294
Ranger 570-6 Full Size Crew 17-19	-	0430-1293	0430-1294
Ranger 570-6 Full Size Crew 20-23	-	0430-1293	0430-1294
RZR 570 EFI 19-20	-	0430-1366	0430-1367
RZR 570 EFI EPS 19-20	-	0430-1366	0430-1367
RZR 570 Trail 21-22	-	0430-1366	0430-1367
RZR 570 Trail Premium 21	-	0430-1366	0430-1367
Ranger 902 Diesel 22	-	0430-1303	0430-1304

UTV STEERING RACK TIE ROD ASSEMBLY KITS continued on next page.



UTV STEERING RACK TIE ROD ASSEMBLY KITS (CONT)

UTV STEERING RACK TIE ROD ASSEMBLY KITS (CONT)

FITS MODEL	OUTER TIE-ROD END KIT PART # (2 REQUIRED PER VEHICLE)	RACK TIE ROD KIT (LEFT) PART #	RACK TIE ROD KIT (RIGHT) PART #
POLARIS (CONT)			
RZR Turbo Pro XP 20	-	0430-1311	0430-1312
RZR Turbo Pro XP 4 20	-	0430-1311	0430-1312
RZR Turbo Pro XP 4 Premium 20-23	-	0430-1311	0430-1312
RZR Turbo Pro XP 4 Sport 21-23	-	0430-1311	0430-1312
RZR Turbo Pro XP 4 Ultimate 20-23	-	0430-1311	0430-1312
RZR Turbo Pro XP Premium 20-23	-	0430-1311	0430-1312
RZR Turbo Pro XP Sport 21-23	-	0430-1311	0430-1312
RZR Turbo Pro XP Ultimate 20-22	-	0430-1311	0430-1312
RZR Turbo R 4 Premium 22-23	0430-1309	0430-1310	0430-1310
RZR Turbo R 4 Sport 22-23	0430-1309	0430-1310	0430-1310
RZR Turbo R 4 Ultimate 22-23	0430-1309	0430-1310	0430-1310
RZR Turbo R Premium 22-23	0430-1309	0430-1310	0430-1310
RZR Turbo R Sport 22-23	0430-1309	0430-1310	0430-1310
RZR Turbo R Ultimate 22-23	0430-1309	0430-1310	0430-1310
General XP 1000 EPS Deluxe 21-22	-	0430-1306	0430-1307
General XP 1000 EPS Factory Custom Edition 21	-	0430-1306	0430-1307
General XP 4 1000 EPS Deluxe 21-22	-	0430-1306	0430-1307
General XP 4 1000 EPS Factory Custom Edition 21	-	0430-1306	0430-1307
Ranger 1000 EPS 21-23	0430-1305	0430-1303	0430-1304
Ranger 1000 EPS Crew 22	-	0430-1303	0430-1304
Ranger 1000 EPS Crew Full Size 23	0430-1305	0430-1303	0430-1304
Ranger 1000 EPS Crew Premium 20-23	0430-1305	0430-1303	0430-1304
Ranger 1000 EPS Premium 21-23	0430-1305	0430-1303	0430-1304
Ranger XP 1000 Crew Premium 22-23	0430-1305	0430-1303	0430-1304
Ranger XP 1000 Crew Trail Boss 22-23	-	0430-1303	0430-1304
Ranger XP 1000 EPS Crew Mud 22	-	0430-1303	0430-1304
Ranger XP 1000 EPS Crew NSTR 22-23	0430-1305	0430-1303	0430-1304
Ranger XP 1000 EPS Crew Texas Edition 22-23	0430-1305	0430-1303	0430-1304
Ranger XP 1000 EPS Mud 21	-	0430-1303	0430-1304
Ranger XP 1000 EPS NSTR 21	0430-1305	0430-1303	0430-1304
Ranger XP 1000 EPS Premium 22-23	0430-1305	0430-1303	0430-1304
Ranger XP 1000 EPS Texas Edition 21	-	0430-1303	0430-1304
Ranger XP 1000 EPS Trail Boss 21-22	-	0430-1303	0430-1304
Ranger XP 1000 EPS Trail Boss 23	0430-1305	0430-1303	0430-1304
Ranger XP 1000 High Lifter 22	-	0430-1303	0430-1304
Ranger XP 1000 NSTR 22-23	0430-1305	0430-1303	0430-1304
RZR XP 1000 Premium 21	-	0430-1311	0430-1312
RZR XP 1000 Sport 21	-	0430-1311	0430-1312
RZR Pro R 4 Premium 22-24	0430-1309	0430-1313	0430-1313

FITS MODEL	OUTER TIE-ROD END KIT PART # (2 REQUIRED PER VEHICLE)	RACK TIE ROD KIT (LEFT) PART #	RACK TIE ROD KIT (RIGHT) PART #
POLARIS (CONT)			
RZR Pro R 4 Sport 22	0430-1309	0430-1313	0430-1313
RZR Pro R 4 Ultimate 22-24	0430-1309	0430-1313	0430-1313
RZR Pro R 4 Ultimate Launch Edition 22	0430-1309	0430-1313	0430-1313
RZR Pro R Premium 22-24	0430-1309	0430-1313	0430-1313
RZR Pro R Sport 22	0430-1309	0430-1313	0430-1313
RZR Pro R Ultimate 22-24	0430-1309	0430-1313	0430-1313
RZR Pro R Ultimate Launch Edition 22	0430-1309	0430-1313	0430-1313
YAMAHA			
Viking 700 14-20	-	0430-1300	0430-1300
Viking 700 EPS 18-23	-	0430-1300	0430-1300
Viking 700 EPS Hunter 17-20	-	0430-1300	0430-1300
Viking 700 EPS Ranch 23	-	0430-1300	0430-1300
Viking 700 EPS Red/Green 18	-	0430-1300	0430-1300
Viking 700 Hunter 14-16	-	0430-1300	0430-1300
Viking 700 VI EPS 15-23	-	0430-1300	0430-1300
Viking 700 VI EPS Hunter 16-22	-	0430-1300	0430-1300
Viking 700 VI EPS Ranch 16-23	-	0430-1300	0430-1300
Wolverine 16-18	-	0430-1300	0430-1300
Wolverine EPS 17	-	0430-1300	0430-1300
Wolverine R-Spec 16	-	0430-1300	0430-1300
Wolverine R-Spec EPS 16-18	-	0430-1300	0430-1300
Wolverine R-Spec EPS SE 16-17	-	0430-1300	0430-1300
Wolverine R-Spec Hunter 18	-	0430-1300	0430-1300
Wolverine X2 19-20	-	0430-1301	0430-1301
Wolverine X2 R-Spec 19-23	-	0430-1301	0430-1301
Wolverine X2 XT-R 20-23	-	0430-1301	0430-1301
Wolverine X4 18-21	-	0430-1301	0430-1301
Wolverine X4 Hunter 18-20	-	0430-1301	0430-1301
Wolverine X4 R-Spec 22-23	-	0430-1301	0430-1301
Wolverine X4 SE 18-19	-	0430-1301	0430-1301
Wolverine X4 XT-R 20-23	-	0430-1301	0430-1301
Wolverine RMAX2 21	-	0430-1302	0430-1302
Wolverine RMAX2 LE 21-23	-	0430-1302	0430-1302
Wolverine RMAX2 R-Spec 22-23	-	0430-1302	0430-1302
Wolverine RMAX2 Sport 22-23	-	0430-1302	0430-1302
Wolverine RMAX2 XT-R 21-23	-	0430-1302	0430-1302
Wolverine RMAX4 21	-	0430-1302	0430-1302
Wolverine RMAX4 LE 21-23	-	0430-1302	0430-1302
Wolverine RMAX4 R-Spec 22-23	-	0430-1302	0430-1302
Wolverine RMAX4 XT-R 21-23	-	0430-1302	0430-1302

RACK BOOT KITS (KIT INCLUDES BOTH BOOTS)

FITS MODEL	PART #	FITS MODEL	PART #	FITS MODEL	PART #
CAN-AM		CAN-AM (CONT)		CAN-AM (CONT)	
Defender 1000 LTD Cab 6x6 23	0430-1372	Defender Max 1000 Lone Star 23	0430-1372	Defender Max 1000 X MR 23	0430-1372
Defender 1000 PRO LTD 23	0430-1372	Defender Max 1000 Lone Star Cab 23	0430-1372	HONDA	
Defender 1000 X MR 23	0430-1372	Defender Max 1000 LTD Cab 23	0430-1372	Pioneer 500 15-23	0430-1374

UTV STEERING RACK TIE ROD ASSEMBLY KITS continued on next page.



UTV STEERING RACK TIE ROD ASSEMBLY KITS (CONT)

RACK BOOT KITS (KIT INCLUDES BOTH BOOTS) (CONT)

FITS MODEL	PART #
HONDA (CONT)	
Pioneer 520 21-23	0430-1374
Pioneer 700 14-23	0430-1374
Pioneer 700 Deluxe 17-23	0430-1374
Pioneer 700 Forest 23	0430-1374
Pioneer 700-4 14-23	0430-1374
Pioneer 700-4 Deluxe 17-23	0430-1374
Pioneer 700-4 Forest 23	0430-1374
Pioneer 1000 16-21	0430-1374
Pioneer 1000 22-23	0430-1374
Pioneer 1000 Deluxe 20-21	0430-1374
Pioneer 1000 Deluxe 22-23	0430-1374
Pioneer 1000 Forest 22-23	0430-1374
Pioneer 1000 Limited 17-21	0430-1374
Pioneer 1000 Trail 22-23	0430-1374
Pioneer 1000-5 16-21	0430-1374
Pioneer 1000-5 22-23	0430-1374
Pioneer 1000-5 Deluxe 16-21	0430-1374
Pioneer 1000-5 Deluxe 22-23	0430-1374
Pioneer 1000-5 Forest 22-23	0430-1374
Pioneer 1000-5 Limited 17-21	0430-1374

FITS MODEL	PART #
HONDA (CONT)	
Pioneer 1000-5 Trail 22-23	0430-1374
Pioneer 1000-6 Deluxe 23	0430-1374
POLARIS	
Ranger 902 Diesel 22	0430-1372
RZR Turbo S 21	0430-1372
RZR Turbo S 4 21	0430-1372
RZR Turbo S 4 Velocity 21	0430-1372
RZR Turbo S Velocity 21	0430-1372
RZR XP 4 Turbo S 19-20	0430-1372
RZR XP 4 Turbo S Velocity 19-20	0430-1372
RZR XP Turbo S 18-20	0430-1372
RZR XP Turbo S Velocity 20	0430-1372
Ranger 1000 EPS 21-23	0430-1372
Ranger 1000 EPS Crew 22	0430-1372
Ranger 1000 EPS Crew Full Size 23	0430-1372
Ranger 1000 EPS Crew Premium 20-23	0430-1372
Ranger 1000 EPS Premium 21-23	0430-1372
Ranger XP 1000 Crew Premium 22-23	0430-1372
Ranger XP 1000 Crew Trail Boss 22-23	0430-1372

FITS MODEL	PART #
POLARIS (CONT)	
Ranger XP 1000 EPS Crew Mud 22	0430-1372
Ranger XP 1000 EPS Crew NSTR 22-23	0430-1372
Ranger XP 1000 EPS Crew Texas Edition 22-23	0430-1372
Ranger XP 1000 EPS Mud 21	0430-1372
Ranger XP 1000 EPS NSTR 21	0430-1372
Ranger XP 1000 EPS Premium 22-23	0430-1372
Ranger XP 1000 EPS Texas Edition 21	0430-1372
Ranger XP 1000 EPS Trail Boss 21-22	0430-1372
Ranger XP 1000 EPS Trail Boss 23	0430-1372
Ranger XP 1000 High Lifter 22	0430-1372
Ranger XP 1000 NSTR 22-23	0430-1372
RZR Pro R 4 Premium 22-24	0430-1376
RZR Pro R 4 Sport 22	0430-1376
RZR Pro R 4 Ultimate 22-24	0430-1376
RZR Pro R 4 Ultimate Launch Edition 22	0430-1376
RZR Pro R Premium 22-24	0430-1376
RZR Pro R Sport 22	0430-1376
RZR Pro R Ultimate 22-24	0430-1376
RZR Pro R Ultimate Launch Edition 22	0430-1376

DIFFERENTIAL BEARINGS

- Kits include high-speed EMQ quality bearings with type TC rubber seals
- Garter-spring inner lips and optimal sealing from rubber-covered outside diameter seals
- Kit includes everything needed to completely service differential conveniently – saves time and money



DIFFERENTIAL BEARING AND SEALS

FITS MODEL	DIFFERENTIAL BEARING AND SEAL KIT FRONT PART #	DIFFERENTIAL BEARING AND SEAL KIT REAR PART #	DIFFERENTIAL SEAL ONLY KIT FRONT PART #	DIFFERENTIAL SEAL ONLY KIT REAR PART #
ARCTIC CAT				
500 EFI 4x4 w/ AT 15-17	1205-0444	-	-	-
500 TRV 15	1205-0444	-	-	-
500 XR 15	1205-0444	-	-	-
Alterra 500 XT 16	1205-0444	-	-	-
Alterra TRV 500 17	1205-0444	-	-	-
550 EFI 4x4 14	1205-0444	-	-	-
550 XR 15	1205-0444	-	-	-
550 XR LTD 15	1205-0444	-	-	-
550 XR XT 15	1205-0444	-	-	-
Alterra 550 16	1205-0444	-	-	-

FITS MODEL	DIFFERENTIAL BEARING AND SEAL KIT FRONT PART #	DIFFERENTIAL BEARING AND SEAL KIT REAR PART #	DIFFERENTIAL SEAL ONLY KIT FRONT PART #	DIFFERENTIAL SEAL ONLY KIT REAR PART #
ARCTIC CAT (CONT)				
Alterra 550 XT 16	1205-0444	-	-	-
Alterra TRV 550 XT EPS 17	1205-0444	-	-	-
Prowler 550 XT 15	1205-0444	-	-	-
700 Diesel 15	1205-0444	-	-	-
700 Mudpro LTD 16-17	1205-0444	-	-	-
700 TBX 16-17	1205-0444	-	-	-
700 TBX SE 16	1205-0444	-	-	-
700 TRV SE 16	1205-0444	-	-	-

DIFFERENTIAL BEARINGS continued on next page.



DIFFERENTIAL BEARINGS (CONT)

DIFFERENTIAL BEARING AND SEALS (CONT)

FITS MODEL	DIFFERENTIAL BEARING AND SEAL KIT FRONT PART #	DIFFERENTIAL BEARING AND SEAL KIT REAR PART #	DIFFERENTIAL SEAL ONLY KIT FRONT PART #	DIFFERENTIAL SEAL ONLY KIT REAR PART #
ARCTIC CAT (CONT)				
700 TRV XT 15	1205-0444	-	-	-
700 XR 15	1205-0444	-	-	-
700 XR LTD 15	1205-0444	-	-	-
700 XR XT 15	1205-0444	-	-	-
Alterra 700 16-18	1205-0444	-	-	-
Alterra 700 Mudpro LTD 18-19	1205-0444	-	-	-
Alterra 700 TBX 17-20	1205-0444	-	-	-
Alterra 700 XT 16	1205-0444	-	-	-
Alterra 700 XT EPS 17-19	1205-0444	-	-	-
Alterra TRV 700 EPS 20	1205-0444	-	-	-
Alterra TRV 700 XT EPS 17-22	1205-0444	-	-	-
Prowler 700 Crew HDX XT 17	1205-0444	-	-	-
Prowler 700 HDX XT 15-16	1205-0444	-	-	-
Prowler 700 HDX XT 17	1205-0444	-	-	-
Prowler 700 HDX XT SE 16	1205-0444	-	-	-
Prowler 700 XT 15	1205-0444	-	-	-
Prowler 700 XT 16-17	1205-0444	-	-	-
V LX 700 17	1205-0444	-	-	-
Wildcat Sport 15-16	1205-0444	-	-	-
Wildcat Sport LTD 15-19	1205-0444	-	-	-
Wildcat Sport SE 17	1205-0444	-	-	-
Wildcat Sport XT 15-19	1205-0444	-	-	-
Wildcat Trail 14-19	1205-0444	-	-	-
Wildcat Trail LTD 15-20	1205-0444	-	-	-
Wildcat Trail SE 16-17	1205-0444	-	-	-
Wildcat Trail XT 14-20	1205-0444	-	-	-
Wildcat 4X LTD 18	1205-0444	-	-	-
Wildcat X EPS 18-19	1205-0444	-	-	-
Wildcat X LTD EPS 18-19	1205-0444	-	-	-
1000 Mudpro LTD 15-17	1205-0444	-	-	-
1000 TRV LTD 15	1205-0444	-	-	-
1000 TRV XT 15	1205-0444	-	-	-
1000 XT 15-17	1205-0444	-	-	-
Alterra TRV 1000 XT 17	1205-0444	-	-	-
Prowler 1000 XT 15-17	1205-0444	-	-	-

FITS MODEL	DIFFERENTIAL BEARING AND SEAL KIT FRONT PART #	DIFFERENTIAL BEARING AND SEAL KIT REAR PART #	DIFFERENTIAL SEAL ONLY KIT FRONT PART #	DIFFERENTIAL SEAL ONLY KIT REAR PART #
ARCTIC CAT (CONT)				
Wildcat 1000 14-15	1205-0444	-	-	-
Wildcat 1000 Late build 13	1205-0444	-	-	-
Wildcat 4 13-14	1205-0444	-	-	-
Wildcat 4 LTD 14	1205-0444	-	-	-
Wildcat 4X 14-16	1205-0444	-	-	-
Wildcat 4X LTD 14-18	1205-0444	-	-	-
Wildcat GT 12-13	1205-0444	-	-	-
Wildcat LTD 13-14	1205-0444	-	-	-
Wildcat LTD Late Build 13	1205-0444	-	-	-
Wildcat X 13-16	1205-0444	-	-	-
Wildcat X LTD 14-16	1205-0444	-	-	-
Wildcat X SE 16	1205-0444	-	-	-
CAN-AM				
Outlander 500 DPS 23	1205-0454	-	0935-1295	-
Outlander X MR 570 EFI 23	1205-0458	-	-	-
Outlander 650 X MR 23	1205-0458	-	-	-
Renegade 650 X MR EFI 22-23	1205-0458	-	-	-
Commander 700 DPS 22-23	1205-0454	1205-0455	0935-1295	0935-1296
Commander 700 XT 22-23	1205-0454	1205-0455	0935-1295	0935-1296
Defender 700 22	1205-0454	1205-0456	0935-1295	0935-1297
Defender 700 23	1205-0454	1205-0455	0935-1295	0935-1296
Defender 700 DPS 22	1205-0454	1205-0456	0935-1295	0935-1297
Defender 700 DPS 23	1205-0454	1205-0455	0935-1295	0935-1296
Defender Max 700 22	1205-0454	1205-0456	0935-1295	0935-1297
Defender Max 700 23	1205-0454	1205-0455	0935-1295	0935-1296
Maverick Trail 700 22-23	1205-0454	1205-0455	0935-1295	0935-1296
Maverick Trail 700 DPS 22-23	1205-0454	1205-0455	0935-1295	0935-1296
Outlander 700 DPS 23	1205-0454	-	0935-1295	-
Defender 800 16	1205-0445	-	-	-
Defender 800 DPS 16	1205-0445	-	-	-
Defender 800 XT 16	1205-0445	-	-	-
Outlander 850 X MR 22-23	1205-0458	-	-	-

DIFFERENTIAL BEARINGS continued on next page.



DIFFERENTIAL BEARINGS (CONT)

DIFFERENTIAL BEARING AND SEALS (CONT)

FITS MODEL	DIFFERENTIAL BEARING AND SEAL KIT FRONT PART #	DIFFERENTIAL BEARING AND SEAL KIT REAR PART #	DIFFERENTIAL SEAL ONLY KIT FRONT PART #	DIFFERENTIAL SEAL ONLY KIT REAR PART #
CAN-AM (CONT)				
Outlander 850 XT-P 22-23	1205-0458	-	-	-
Outlander MAX 850 XT-P 22-23	1205-0458	-	-	-
Defender 1000 16	1205-0445	-	-	-
Defender 1000 DPS 16	1205-0445	-	-	-
Defender 1000 XT 16	1205-0445	-	-	-
Outlander 1000R X MR 22-23	1205-0458	-	-	-
Outlander 1000R XT-P 22-23	1205-0458	-	-	-
Outlander Max 1000R LTD 22-23	1205-0458	-	-	-
Outlander Max 1000R XT-P 22-23	1205-0458	-	-	-
Renegade 1000R X MR 22-23	1205-0458	-	-	-
Renegade 1000R X XC 23	1205-0458	-	-	-
HONDA				
Pioneer 500 15-23	-	1205-0448	-	0935-1291
Pioneer 520 21-23	-	1205-0448	-	0935-1291
Pioneer 700 14-23	-	1205-0449	-	0935-1291
Pioneer 700 Deluxe 17-23	-	1205-0449	-	0935-1291
Pioneer 700 Forest 23	-	1205-0449	-	0935-1291
Pioneer 700-4 14-23	-	1205-0449	-	0935-1291
Pioneer 700-4 Deluxe 17-23	-	1205-0449	-	0935-1291
Pioneer 700-4 Forest 23	-	1205-0449	-	0935-1291
KAWASAKI				
KVF300A Prairie 4 x4 99-02	-	-	0935-1282	-
KVF400A Prairie 4x4 97-98	-	-	0935-1282	-
KVF400C Prairie 4x4 99-02	-	-	0935-1282	-
Mule 610 4x4 05-16	-	-	0935-1282	-
Mule 610 4x4 XC 10-15	-	-	0935-1282	-
Mule SX 19-20	-	-	0935-1282	-
Mule SX 4x4 FI 20-23	-	-	0935-1282	-
Mule SX 4x4 SE FI 21	-	-	0935-1282	-
Mule SX 4x4 XC Camo FI 21	-	-	0935-1282	-
Mule SX 4x4 XC FI 21-23	-	-	0935-1282	-
Mule SX 4x4 XC LE FI 21-23	-	-	0935-1282	-

FITS MODEL	DIFFERENTIAL BEARING AND SEAL KIT FRONT PART #	DIFFERENTIAL BEARING AND SEAL KIT REAR PART #	DIFFERENTIAL SEAL ONLY KIT FRONT PART #	DIFFERENTIAL SEAL ONLY KIT REAR PART #
POLARIS				
Sportsman 570 EFI HD 16-17	1205-0447	-	0935-1290	-
Sportsman 570 EFI HD 18	1205-0447	-	0935-1290	-
Sportsman 570 EFI UTE 17	1205-0447	-	0935-1290	-
Sportsman 570 EFI UTE 18-19	1205-0447	-	0935-1290	-
Sportsman 570 Utility HD 22	1205-0447	-	0935-1290	-
Sportsman 570 Utility HD 23	1205-0447	-	0935-1290	-
Sportsman 570 Utility HD LE 21	1205-0447	-	0935-1290	-
YAMAHA				
Wolverine X2 19-20	1205-0453	-	0935-1294	-
Wolverine X2 R-Spec 19-23	1205-0453	-	0935-1294	-
Wolverine X2 XT-R 20-23	1205-0453	-	0935-1294	-
Wolverine X4 18-21	1205-0453	-	0935-1294	-
Wolverine X4 Hunter 18-20	1205-0453	-	0935-1294	-
Wolverine X4 R-Spec 22-23	1205-0453	-	0935-1294	-
Wolverine X4 SE 18-19	1205-0453	-	0935-1294	-
Wolverine X4 XT-R 20-23	1205-0453	-	0935-1294	-
Wolverine RMAX2 21	1205-0453	1205-0457	0935-1294	0935-1298
Wolverine RMAX2 LE 21-23	1205-0453	1205-0457	0935-1294	0935-1298
Wolverine RMAX2 R-Spec 22-23	1205-0453	1205-0457	0935-1294	0935-1298
Wolverine RMAX2 port 22-23	1205-0453	1205-0457	0935-1294	0935-1298
Wolverine RMAX2 XT-R 21-23	1205-0453	1205-0457	0935-1294	0935-1298
Wolverine RMAX4 21	1205-0453	1205-0457	0935-1294	0935-1298
Wolverine RMAX4 LE 21-23	1205-0453	1205-0457	0935-1294	0935-1298
Wolverine RMAX4 R-Spec 22-23	1205-0453	1205-0457	0935-1294	0935-1298
Wolverine RMAX4 XT-R 21-23	1205-0453	1205-0457	0935-1294	0935-1298

DIFFERENTIAL BEARINGS continued on next page.



DIFFERENTIAL BEARINGS (CONT)

TRANSAXLE BEARING AND SEAL KITS

FITS MODEL	TRANSAXLE BEARING AND SEAL KIT PART #	TRANSAXLE SEAL KIT PART #
POLARIS		
ACE 325 14-16	-	0935-1283
ACE 325 EU 15	-	0935-1283
ACE 325 HD 15	-	0935-1283
Hawkeye 325 2x4 15	-	0935-1283
Ranger 325 ETX 15	-	0935-1283
Ranger 325 ETX 16	-	0935-1283
Ranger 325 ETX EU 15	-	0935-1283
Sportsman 325 ETX EFI 15	-	0935-1283
Sportsman 325 ETX EFI HD 15	-	0935-1283
Sportsman 325 ETX EFI MD 15	-	0935-1283
Hawkeye 400 HO 2x4 11-14	-	0935-1285
Ranger 4x4 400 10-14	-	0935-1283
Sportsman 400 H.O. 4x4 11-12	-	0935-1285
Sportsman 400 H.O. 4x4 13-14	-	0935-1285
450 H.O. 2x4 MD 16	-	0935-1283
Farmhand 450 2x4 17	-	0935-1283
Sportsman 450 EFI MD 16	-	0935-1283
Sportsman 450 EPS Quad 16	-	0935-1283
Sportsman 450 EPS ZUG 16	-	0935-1283
Sportsman 450 HD 2x4 18	-	0935-1283
Sportsman 450 H.O. 16-23	-	0935-1283
Sportsman 450 H.O. 2x4 MD 16	-	0935-1283
Sportsman 450 H.O. EPS 20	-	0935-1283
Sportsman 450 H.O. UTL 20	-	0935-1283
Sportsman 450 Tractor 16	-	0935-1283
Ranger 4x4 500 Crew 11-12	-	0935-1283
Ranger 4x4 500 Crew Midsize 13	-	0935-1283
Ranger 4x4 500 EFI 10-12	-	0935-1283
Ranger 4x4 500 Midsize 13	-	0935-1283
Ranger 500 2WD 17-18	-	0935-1283
Ranger 500 2WD 19-21	-	0935-1283
Ranger 500 4x4 18-22	-	0935-1283
Ranger 500 ETX 17	-	0935-1283
Sportsman 500 4x4 H.O. 11-12	-	0935-1285
Sportsman 500 4x4 H.O. 13	-	0935-1285
Sportsman 500 X2 06-07	-	0935-1283
Sportsman 500 X2 08-09	-	0935-1283
Sportsman Forest 500 11-12	-	0935-1283
Sportsman Forest 500 13	-	0935-1283
Sportsman Forest 500 Tractor 11-14	-	0935-1283
Sportsman Touring 500 08-13	-	0935-1283
ACE 570 15-16	-	0935-1283
ACE 570 EU 15-16	-	0935-1283
ACE 570 HD 15-16	-	0935-1283
ACE 570 MD 16	-	0935-1283
Ranger 570 14-15	-	0935-1283
Ranger 570 16-18	-	0935-1283

FITS MODEL	TRANSAXLE BEARING AND SEAL KIT PART #	TRANSAXLE SEAL KIT PART #
POLARIS (CONT)		
Ranger 570 19-21	-	0935-1283
Ranger 570 Camo 14-17	-	0935-1283
Ranger 570 Camo 18-20	-	0935-1283
Ranger 570 Crew 14-15	-	0935-1283
Ranger 570 Crew 16-18	-	0935-1283
Ranger 570 Crew 19-21	-	0935-1283
Ranger 570 Crew Camo 15	-	0935-1283
Ranger 570 Crew Camo 16-18	-	0935-1283
Ranger 570 Crew Camo 19-20	-	0935-1283
Ranger 570 Crew EPS 14-15	-	0935-1283
Ranger 570 Crew EPS 16-18	-	0935-1283
Ranger 570 Crew EPS 19-20	-	0935-1283
Ranger 570 Crew Premium 21	-	0935-1283
Ranger 570 EPS 14-15	-	0935-1283
Ranger 570 EPS 16-18	-	0935-1283
Ranger 570 EPS 19-20	-	0935-1283
Ranger 570 EU 15	-	0935-1283
Ranger 570 EU 17-18	-	0935-1283
Ranger 570 Full Size 15-18	-	0935-1283
Ranger 570 Full Size 19-23	-	0935-1283
Ranger 570 Full Size Crew 15-16	-	0935-1283
Ranger 570 Full Size w/ Strut 16	-	0935-1283
Ranger 570 HD 19	-	0935-1283
Ranger 570 Hunter Edition 16	-	0935-1283
Ranger 570 INTL 14	-	0935-1283
Ranger 570 Premium 21	-	0935-1283
Ranger XP 570 Full Size 16	-	0935-1283
Ranger XP 570 Full Size Camo 16	-	0935-1283
Ranger XP 570 Full Size EPS 16	-	0935-1283
Ranger XP 570-6 Crew Pursuit EPS Camo 16	-	0935-1283
Ranger 570-6 Full Size Crew 16-18	-	0935-1283
Ranger 570-6 Full Size Crew 19-23	-	0935-1283
RZR 570 EFI 12	-	0935-1283
RZR 570 EFI 13-15	-	0935-1283
RZR 570 EFI 16-17	-	0935-1289
RZR 570 EFI 18	-	0935-1283
RZR 570 EFI 19-20	-	0935-1289
RZR 570 EFI EPS 19-20	-	0935-1289
RZR 570 EU 15	-	0935-1283
RZR 570 S 17	-	0935-1283
RZR 570 Trail 21-22	-	0935-1289
RZR 570 Trail Premium 21	-	0935-1289
Sportsman 570 EFI 14	-	0935-1285
Sportsman 570 EFI 15-23	-	0935-1283
Sportsman 570 EFI EPS 14	-	0935-1285
Sportsman 570 EFI EPS 15	-	0935-1283

DIFFERENTIAL BEARINGS continued on next page.



DIFFERENTIAL BEARINGS (CONT)

TRANSAXLE BEARING AND SEAL KITS (CONT)

FITS MODEL	TRANSAXLE BEARING AND SEAL KIT PART #	TRANSAXLE SEAL KIT PART #
POLARIS (CONT)		
Sportsman 570 EFI EPS Forest Quad 15	-	0935-1283
Sportsman 570 EFI EPS Forest Tractor 15	-	0935-1283
Sportsman 570 EFI EPS MD 15	-	0935-1283
Sportsman 570 EFI HD 16-17	-	0935-1288
Sportsman 570 EFI HD 18	-	0935-1283
Sportsman 570 EFI MD 15-17	-	0935-1283
Sportsman 570 EFI UTE 17	-	0935-1288
Sportsman 570 EFI UTE 18-19	-	0935-1283
Sportsman 570 EFI UTE HD 15	-	0935-1283
Sportsman 570 EFI UTE HD 16	-	0935-1288
Sportsman 570 EFI UTE HD EPS 14	-	0935-1285
Sportsman 570 EFI UTE MD 16	-	0935-1288
Sportsman 570 EFI UTE Tractor 16	-	0935-1288
Sportsman 570 EFI X2 EPS 15	-	0935-1283
Sportsman 570 EFI X2 EPS 16-21	-	0935-1283
Sportsman 570 EFI X2 EPS EU 15	-	0935-1283
Sportsman 570 EPS 20	-	0935-1283
Sportsman 570 EPS EU 17-20	-	0935-1283
Sportsman 570 EPS EU SP 18-19	-	0935-1283
Sportsman 570 EPS Quad 16	-	0935-1283
Sportsman 570 EPS Tractor 16	-	0935-1283
Sportsman 570 EPS UTE Quad 16	-	0935-1283
Sportsman 570 EPS Utility 20	-	0935-1283
Sportsman 570 EPS ZUG 16-18	-	0935-1283
Sportsman 570 EPS ZUG SP 18-19	-	0935-1283
Sportsman 570 HD 15	-	0935-1283
Sportsman 570 HD EFI 14	-	0935-1283
Sportsman 570 Latin 20	-	0935-1283
Sportsman 570 Premium 20-23	1205-0451	0935-1293
Sportsman 570 SP 15-20	-	0935-1283
Sportsman 570 SP EPS Quad 15-16	-	0935-1283
Sportsman 570 SP EPS Tractor 15-19	-	0935-1283
Sportsman 570 SP MD 15-16	-	0935-1283
Sportsman 570 Tractor 16-19	-	0935-1283
Sportsman 570 Tractor ZUG 20	-	0935-1283
Sportsman 570 Trail 21-23	1205-0451	0935-1293
Sportsman 570 Ultimate Trail LE 21-22	1205-0451	0935-1293
Sportsman 570 Utility HD 22	1205-0451	0935-1293
Sportsman 570 Utility HD 23	1205-0451	-
Sportsman 570 Utility HD LE 21	-	-
Sportsman 570 X2 EPS EU 19	-	0935-1283
Sportsman 570 X2 EPS MD 17	-	0935-1283
Sportsman 570 X2 EPS Tractor 17-20	-	0935-1283
Sportsman Forest 570 14	-	0935-1285
Sportsman Forest 570 EFI EPS 14	-	0935-1285
Sportsman Forest 570 EFI EPS 15	-	0935-1283

FITS MODEL	TRANSAXLE BEARING AND SEAL KIT PART #	TRANSAXLE SEAL KIT PART #
POLARIS (CONT)		
Sportsman Touring 570 EFI 14	-	0935-1285
Sportsman Touring 570 EFI 16-23	-	0935-1283
Sportsman Touring 570 EFI EPS 15-17	-	0935-1283
Sportsman Touring 570 EFI EPS MD 16-17	-	0935-1283
Sportsman Touring 570 EFI EPS Tractor 16	-	0935-1283
Sportsman Touring 570 EFI EU 15	-	0935-1283
Sportsman Touring 570 EFI INTL 14	-	0935-1285
Sportsman Touring 570 EFI MD 15	-	0935-1283
Sportsman Touring 570 EPS EU 19	-	0935-1283
Sportsman Touring 570 EPS Quad 16	-	0935-1283
Sportsman Touring 570 EPS Tractor 17-19	-	0935-1283
Sportsman Touring 570 EPS Tractor Euro 20	-	0935-1283
Sportsman Touring 570 EPS Tractor SP 18-20	-	0935-1283
Sportsman Touring 570 Premium 20-22	-	0935-1283
Sportsman Touring 570 SP 15-20	-	0935-1283
Sportsman X2 700 EFI 08	-	0935-1283
Ranger 4x4 800 EFI 10-14	-	0935-1283
Ranger 4x4 800 EFI Crew 10-14	-	0935-1283
Ranger 4x4 800 EFI Midsize 13-14	-	0935-1283
Ranger XP 800 12	-	0935-1283
Sportsman 800 EFI 11-14	-	0935-1285
Sportsman 800 EFI Forest 14	-	0935-1285
Sportsman Forest 800 EFI 12-13	-	0935-1285
Sportsman Touring 800 EFI 08-09	-	0935-1283
Sportsman X2 800 EFI 07	-	0935-1283
Sportsman X2 800 EFI 08-09	-	0935-1283
ACE 900 EFI EPS 16	-	0935-1283
PRO XD Full Size Diesel 22-23	1205-0452	-
PRO XD Full Size Diesel Crew 22	1205-0452	-
PRO XD Full Size Diesel INTL 23	1205-0452	-
Ranger 900 Crew 14-17	-	0935-1283
Ranger 900 Crew 19	-	0935-1283
Ranger 900 Crew EPS 14-17	-	0935-1283
Ranger 900 Crew EPS 19	-	0935-1283
Ranger XP 900 13-18	-	0935-1283
Ranger XP 900 19	-	0935-1283
Ranger XP 900 Crew 18	-	0935-1283
Ranger XP 900 EPS 18	-	0935-1283
Ranger XP 900 EPS 19	-	0935-1283
Ranger XP 900 EU 15	-	0935-1283
Ranger XP 900 High Lifter 16	-	0935-1283
Ranger 902 Diesel 19-22	1205-0452	-
RZR 4 900 15	-	0935-1283

DIFFERENTIAL BEARINGS continued on next page.



DIFFERENTIAL BEARINGS (CONT)

TRANSAXLE BEARING AND SEAL KITS (CONT)

FITS MODEL	TRANSAXLE BEARING AND SEAL KIT PART #	TRANSAXLE SEAL KIT PART #
POLARIS (CONT)		
RZR XP-4 900 12-14	-	0935-1283
RZR 900 50 55 Inch 15	-	0935-1283
RZR 900 50 55 Inch 16-17	1205-0446	-
RZR 900 50 Inch MD 17	1205-0446	-
RZR 900 S 60 Inch 15	-	0935-1283
RZR XP 900 11-14	-	0935-1283
RZR XP Turbo Pro 20	1205-0450	0935-1292
RZR XP Turbo Pro 4 20	1205-0450	0935-1292
RZR XP Turbo Pro 4 Premium 20-23	1205-0450	0935-1292
RZR XP Turbo Pro 4 Sport 21-23	1205-0450	0935-1292
RZR XP Turbo Pro 4 Ultimate 20-23	1205-0450	0935-1292
RZR XP Turbo Pro Premium 20-23	1205-0450	0935-1292
RZR XP Turbo Pro Sport 21-23	1205-0450	0935-1292
RZR XP Turbo Pro Ultimate 20-22	1205-0450	0935-1292
RZR Turbo R 4 Premium 22-23	1205-0450	0935-1292
RZR Turbo R 4 Sport 22-23	1205-0450	0935-1292
RZR Turbo R 4 Ultimate 22-23	1205-0450	0935-1292
RZR Turbo R Premium 22-23	1205-0450	0935-1292
RZR Turbo R Sport 22-23	1205-0450	0935-1292
RZR Turbo R Ultimate 22-23	1205-0450	0935-1292
RZR Turbo S 21	-	0935-1286
RZR Turbo S 4 21	-	0935-1286
RZR Turbo S 4 Velocity 21	-	0935-1286
RZR Turbo S Velocity 21	-	0935-1286
RZR XP 4 Turbo 16	-	0935-1286
RZR XP 4 Turbo 17-21	-	0935-1286
RZR XP 4 Turbo LE 19	-	0935-1286
RZR XP 4 Turbo S 19-20	-	0935-1286
RZR XP 4 Turbo S Velocity 19-20	-	0935-1286
RZR XP Turbo 16	-	0935-1286
RZR XP Turbo 17-21	-	0935-1286
RZR XP Turbo MD 16	-	0935-1286
RZR XP Turbo S 18-20	-	0935-1286
RZR XP Turbo S Velocity 20	-	0935-1286
RZR XP Turbo Tractor 17-18	-	0935-1286
General 1000 EPS 17	1205-0446	-
General 1000 EPS 18	1205-0446	-
General 1000 EPS Deluxe 18	1205-0446	-
General 1000 EPS Hunter Edition 18-19	1205-0446	-
General 1000 EPS Premium 18	1205-0446	-
General 1000 EPS Ride Command 18-19	1205-0446	-
General 4 1000 EPS 17-18	1205-0446	-
General 4 1000 EPS Ride Command 18-20	1205-0446	-
Ranger 1000 Diesel 15	-	0935-1283
Ranger 1000 Diesel 18	-	0935-1283
Ranger 1000 Diesel Crew 15-18	-	0935-1283

FITS MODEL	TRANSAXLE BEARING AND SEAL KIT PART #	TRANSAXLE SEAL KIT PART #
POLARIS (CONT)		
Ranger 1000 Diesel EU 15	-	0935-1283
Ranger 1000 EPS BASE 18-19	-	0935-1287
Ranger 1000 EPS Crew 20	1205-0452	0935-1287
Ranger 1000 EPS Crew Camo 20	1205-0452	0935-1287
Ranger 1000 EPS Texas Edition 20	1205-0452	0935-1287
Ranger XP 1000 17	1205-0446	-
Ranger XP 1000 Crew 17	1205-0446	-
Ranger XP 1000 Crew EPS 17-18	1205-0446	-
Ranger XP 1000 Crew Hunter 17	1205-0446	-
Ranger XP 1000 Crew NSTR 17	1205-0446	-
Ranger XP 1000 Crew Premium 21	1205-0452	0935-1287
Ranger XP 1000 Crew Premium 22-23	1205-0452	0935-1287
Ranger XP 1000 Crew Trail Boss 21-23	1205-0452	0935-1287
Ranger XP 1000 EPS 17	1205-0446	-
Ranger XP 1000 EPS 18	-	0935-1287
Ranger XP 1000 EPS 20	1205-0452	0935-1287
Ranger XP 1000 EPS 21	1205-0452	0935-1287
Ranger XP 1000 EPS Crew 19	-	0935-1287
Ranger XP 1000 EPS Crew 20	1205-0452	0935-1287
Ranger XP 1000 EPS Crew Mud 19-20	1205-0452	0935-1287
Ranger XP 1000 EPS Crew Mud 21-22	1205-0452	0935-1287
Ranger XP 1000 EPS Crew NSTR 18-19	-	0935-1287
Ranger XP 1000 EPS Crew NSTR 20	1205-0452	0935-1287
Ranger XP 1000 EPS Crew NSTR 21	-	0935-1287
Ranger XP 1000 EPS Crew NSTR 22-23	1205-0452	0935-1287
Ranger XP 1000 EPS Crew Premium 20	-	0935-1287
Ranger XP 1000 EPS Crew Texas Edition 20	1205-0452	0935-1287
Ranger XP 1000 EPS Crew Texas Edition 21	-	0935-1287
Ranger XP 1000 EPS Crew Texas Edition 22	1205-0452	0935-1287
Ranger XP 1000 EPS Mud 19-20	1205-0452	0935-1287
Ranger XP 1000 EPS Mud 21	-	0935-1287
Ranger XP 1000 EPS NSTR 20	1205-0452	0935-1287
Ranger XP 1000 EPS NSTR 21	-	0935-1287
Ranger XP 1000 EPS Texas Edition 21	1205-0452	0935-1287
Ranger XP 1000 EPS Trail Boss 21-23	1205-0452	0935-1287
Ranger XP 1000 High Lifter 22	1205-0452	0935-1287
Ranger XP 1000 Hunter 17	1205-0446	-
Ranger XP 1000 NSTR 17	1205-0446	-
Ranger XP 1000 NSTR 22-23	1205-0452	0935-1287
Ranger XP 1000 Ranch 17	1205-0446	-
RZR RS1 18-22	-	0935-1286
RZR XP 1000 INTL 15	1205-0446	0935-1289



WHEEL SPACERS

- Water and dirt grind between wheel bearing seals and soft OEM aluminum wheel spacers; this creates grooves and allows for bearing contamination
- This makes for a tight seal that will last for years and keep your bearings fresh
- Replace or upgrade OEM wheel spacers with these durable replacements
- Kit comes with required amount of spacers per application
- Features hardened steel contact surfaces



0220-0067



0220-0068

FITS MODEL	FRONT PART #	REAR PART #
BETA		
RX 2T 300 21-23	0220-0067	0220-0068
RR Racing 2T 125 21-23	0220-0067	0220-0068
RR 2T 125 19-23	0220-0067	0220-0068
RR Racing 2T 200 21-23	0220-0067	0220-0068
RR 2T 200 13-14	0220-0067	0220-0068
RR Racing 2T 250 22-23	0220-0067	0220-0068
RR 2T 250 13-23	0220-0067	0220-0068
RR Racing 2T 300 22-23	0220-0067	0220-0068
RR 2T 300 13-23	0220-0067	0220-0068
RR 4T Racing 350 22-23	0220-0067	0220-0068
RR 4T 350 13-23	0220-0067	0220-0068
RR 4T Racing 390 22-23	0220-0067	0220-0068
RR 4T 390 15-23	0220-0067	0220-0068
RR 4T 400 13-14	0220-0067	0220-0068
RR 4T 430 Racing 22-23	0220-0067	0220-0068
RR 4T 430 15-23	0220-0067	0220-0068
RR 4T 450 13-14	0220-0067	0220-0068
RR 4T 480 Racing 22-23	0220-0067	0220-0068
RR 4T 480 18-23	0220-0067	0220-0068
RR 4T 498 13-14	0220-0067	0220-0068
RS 4T 350 17-23	0220-0067	0220-0068
RS 4T 390 17-23	0220-0067	0220-0068
RS 4T 400 14	0220-0067	0220-0068
RS 4T 430 17-23	0220-0067	0220-0068
RS 4T 500 17-23	0220-0067	0220-0068
RS 4T 390 15-16	0220-0067	0220-0068
Xtrainer 300 15-23	0220-0066	0220-0068
GASGAS		
MC 125 24	-	0220-0065
MC 250 24	-	0220-0065
MC 250F Factory Edition 23-24	-	0220-0065
MC 250F 24	-	0220-0065
MC 350F 24	-	0220-0065
MC 450F Factory Edition 23-24	-	0220-0065
MC 450F 24	-	0220-0065
EC 450F 24	-	0220-0065

FITS MODEL	FRONT PART #	REAR PART #
GASGAS (CONT)		
EW 500F 24	-	0220-0065
EX 250F 24	-	0220-0065
EX 350F 24	-	0220-0065
EX 450F 24	-	0220-0065
HUSQVARNA		
FC 250 Heritage Edition 23	-	0220-0065
FC 250 23-24	-	0220-0065
FC 350 Heritage Edition 23	-	0220-0065
FC 350 23-24	-	0220-0065
FC 450 Heritage Edition 23	-	0220-0065
FC 450 Rockstar Edition 22-24	-	0220-0065
FC 450 23-24	-	0220-0065
TC 125 Heritage Edition 23	-	0220-0065
TC 125 23-24	-	0220-0065
TC 250 Heritage Edition 23	-	0220-0065
TC 250 23-24	-	0220-0065
FE 450 24	-	0220-0065
TE 150 24	-	0220-0065
TE 250 24	-	0220-0065
TE 300 Pro 24	-	0220-0065
TE 300 24	-	0220-0065
KTM		
SX-F 250 Factory Edition 24	-	0220-0065
SX-F 250 23-24	-	0220-0065
SX-F 350 23-24	-	0220-0065
SX-F 450 Factory Edition 22-24	-	0220-0065
SX 125 23-24	-	0220-0065
SX 250 23-24	-	0220-0065
SX 300 23-24	-	0220-0065
EXC-F 350 24	-	0220-0065
EXC-F 500 Six Days 24	-	0220-0065
EXC-F 500 24	-	0220-0065
EXC 300 24	-	0220-0065
EXC Hardenduro 300 24	-	0220-0065
XC 125 23-24	-	0220-0065

TAPERED DAC WHEEL BEARING UPGRADE KIT FOR HONDA

- 95% better static and 86% better dynamic load capacity compared to standard DAC bearings
- High-contact double-lip seals with armor shield
- O-ring seals on ID of bearing for superior water and dirt exclusion
- 52100 bearing steel hardened and tempered for maximum durability



FITS MODEL	PART #	FITS MODEL	PART #	FITS MODEL	PART #
Pioneer 500 15-16	0215-1276	Pioneer 700 14	0215-1276	Pioneer 700-4 14	0215-1276



WHEEL STUD AND NUT KITS

- Kit includes components to rebuild one wheel
- Kit includes wheel studs, nuts, washers, and other miscellaneous components



0213-1257

FITS MODEL	FRONT PART #	REAR PART #
ARCTIC CAT		
250 2x4 01-02	0213-1257	0213-1257
250 4x4 01-02	0213-1257	0213-1257
300 2x4 01-02	0213-1257	0213-1257
300 4x4 01-02	0213-1257	0213-1257
375 2x4 w /AT 02	0213-1257	0213-1257
375 4x4 w/ AT 02	0213-1257	0213-1257
400 2x4 01	0213-1257	-
400 4x4 w/ MT 01	0213-1257	0213-1257
400 4x4 w/ MT 02	0213-1257	-
500 4x4 w/ AT 00-02	0213-1257	-
500 4x4 w/ MT 01	0213-1257	-
500 FIS TBX 4x4 02	0213-1257	0213-1257
CAN-AM		
Outlander DPS 450 EFI 23	0213-1268	0213-1268
Outlander Max 450 6x6 22-23	0213-1268	0213-1268
Outlander DPS 450 EFI 22	0213-1271	0213-1271
Outlander Max DPS 450 EFI 22	0213-1271	0213-1271
Outlander Max DPS 450 EFI 23	0213-1268	0213-1268
Outlander Max STD 450 EF 22-23	0213-1271	0213-1271
Outlander STD 450 EFI 22-23	0213-1271	0213-1271
Outlander 500 DPS 23	0213-1271	0213-1271
Outlander 570 EFI Hunter Edition 20	0213-1268	0213-1268
Outlander DPS 570 EFI 22	0213-1271	0213-1271
Outlander DPS 570 EFI 23	0213-1268	0213-1268
Outlander Max DPS 570 EFI 22	0213-1271	0213-1271
Outlander Max DPS 570 EFI 23	0213-1268	0213-1268
Outlander Max STD 570 EFI 22-23	0213-1271	0213-1271
Outlander Max XT 570 EFI 22-23	0213-1268	0213-1268
Outlander MR 570 EFI 22-23	0213-1268	0213-1268
Outlander STD 570 EFI 22-23	0213-1271	0213-1271
Outlander X MR 570 EFI 22-23	0213-1268	0213-1268
Outlander XT 570 EFI 22-23	0213-1268	0213-1268
Renegade 570 EFI 22	0213-1268	0213-1268
Outlander 650 X MR 22-23	0213-1268	0213-1268
Outlander 650 XT 22-23	0213-1268	0213-1268
Outlander DPS 650 EFI 22	0213-1268	0213-1268
Outlander Max 650 6x6 22	0213-1268	0213-1268
Outlander Max 650 DPS 22	0213-1268	0213-1268
Outlander Max 650 DPS 6x6 23	0213-1268	0213-1268
Outlander Max 650 XT 22-23	0213-1268	0213-1268

FITS MODEL	FRONT PART #	REAR PART #
CAN-AM (CONT)		
Outlander STD 650 EFI 22	0213-1271	0213-1271
Renegade 650 XMR EFI 22-23	0213-1268	0213-1268
Outlander 700 DPS 23	0213-1271	0213-1271
Outlander 800R XT-P 4x4 10-11	0213-1268	0213-1268
Outlander 850 DPS 22-23	0213-1268	0213-1268
Outlander 850 X MR 22-23	0213-1268	0213-1268
Outlander 850 XT 22-23	0213-1268	0213-1268
Outlander 850 XT-P 22-23	0213-1268	0213-1268
Outlander Max 850 XT 22-23	0213-1268	0213-1268
Outlander Max 850 XT-P 22-23	0213-1268	0213-1268
Renegade 850 22	0213-1268	0213-1268
Renegade 850 X XC 22	0213-1268	0213-1268
Commander 1000R DPS 21-23	0213-1271	-
Commander 1000R X MR 22-23	0213-1268	-
Commander 1000R XT 22-23	0213-1268	-
Commander 1000R XT-P 22-23	0213-1268	-
Commander Max 1000R DPS 21-23	0213-1271	-
Commander Max 1000R XT 21-23	0213-1268	-
Commander Max 1000R XT-P 22-23	0213-1268	-
Outlander 1000R X MR 22-23	0213-1268	0213-1268
Outlander 1000R XT 22-23	0213-1268	0213-1268
Outlander 1000R XT-P 22-23	0213-1268	0213-1268
Outlander 1000R X XC 22-23	0213-1268	0213-1268
Outlander Max 1000 6x6 XT 22-23	0213-1268	0213-1268
Outlander Max 1000R LTD 22-23	0213-1268	0213-1268
Outlander Max 1000R XT 22-23	0213-1268	0213-1268
Outlander Max 1000R XT-P 22-23	0213-1268	0213-1268
Renegade 1000R X MR 22-23	0213-1268	0213-1268
Renegade 1000R X XC 22-23	0213-1268	0213-1268
POLARIS		
Ranger 4x4 500 Crew 12	0213-1259	0213-1259
Ranger 4x4 500 Crew Midsize 13	0213-1259	0213-1259
Ranger 4x4 500 Midsize 13	0213-1259	0213-1259
Sportsman 500 X2 09	0213-1259	0213-1259
Sportsman Forest 500 Tractor 12-14	0213-1259	0213-1259

FITS MODEL	FRONT PART #	REAR PART #
POLARIS (CONT)		
Sportsman 550 EPS 10-14	0213-1267	0213-1267
Sportsman XP 550 09-10	0213-1267	0213-1267
Sportsman XP 550 EPS 09	0213-1267	0213-1267
ACE 570 15-16	0213-1259	0213-1259
ACE 570 EU 15-16	0213-1259	0213-1259
ACE 570 MD 16	0213-1259	0213-1259
RZR 570 EFI 16-17	0213-1261	0213-1259
Sportsman 570 Tractor 17	0213-1259	0213-1259
Sportsman 570 X2 EPS Tractor 17	0213-1259	0213-1259
Ranger 4x4 700 07	0213-1259	0213-1259
Ranger 4x4 700 09	0213-1261	0213-1259
Ranger 4x4 700 Crew 08-09	0213-1259	0213-1259
Ranger 4x4 800 EFI 10-13	0213-1261	0213-1259
Ranger 4x4 800 EFI Crew 10-12	0213-1261	-
Ranger 4x4 800 EFI Midsize 13-14	0213-1259	-
Ranger XP 800 12	0213-1261	0213-1259
RZR 4 800 11	-	0213-1259
RZR 800 09-14	-	0213-1259
Sportsman 800 EFI 06	0213-1259	0213-1259
Sportsman X2 800 EFI 09	0213-1259	0213-1259
Scrambler 850 H.O./EPS 13-14	0213-1267	0213-1267
Scrambler XP 850 H.O. EPS 14	0213-1267	0213-1267
Sportsman 850 SP 16-19	0213-1267	0213-1267
Sportsman 850 WV 14	0213-1267	0213-1267
Sportsman XP 850 EPS 10-14	0213-1267	0213-1267
Sportsman XP 850 EPS H.O. 15	0213-1267	0213-1267
Scrambler 1000 EU 17	0213-1267	0213-1267
Scrambler 1000 MD 16-17	0213-1267	0213-1267
Scrambler 1000 Tractor 16-17	0213-1267	0213-1267
Sportsman 1000 MD 16	0213-1267	0213-1267
Sportsman XP 1000 Tractor 16	0213-1267	0213-1267
SUZUKI		
LT-80 87-94	0213-1256	0213-1256
LT-80 95	-	0213-1256
LT-80 96-06	0213-1256	0213-1256
LT-Z90 Quadport 07-22	-	0213-1256
LT-A400FZ 4WD King Quad SE 20-22	0213-1270	0213-1270 ¹
LT-A500XP Power Steering SE 17-22	0213-1270	0213-1270
LTA-750 XP King Quad SE 19-22	0213-1270	0213-1270

¹ For left rear wheel only.



VERSAGRIP TIRE

- Incredible traction and performance
- 6 ply rated tire
- 15 mm deep lugs
- Integrated side lugs for added traction
- E-mark and REACH-compliant

Versagrip Front/Rear

SIZE	PLY	TREAD DEPTH	PART #
25x8-12	6	15 mm	0320-1488
25x10-12	6	15 mm	0320-1489

SIZE	PLY	TREAD DEPTH	PART #
27x9-14	6	15 mm	0320-1490
27x12-14	6	15 mm	0320-1491

26X WHEEL

- Handles load capacities from 675 lbs for the 12x7 to 700 lbs for the 14x7, which meet or exceed all current market requirements
- Separate yourself from the herd with a line of wheels that are 100% X-rayed on the production line to ensure quality
- Center caps are included with each wheel, but lug nuts must be ordered separately; see page 259 of the 2024 Parts Europe ATV/UTV Tires & Wheels catalog



0230-1538

FITS MODEL	POSITION	SIZE	BOLT PATTERN	OFFSET	PART #
BOMBARDIER/CAN-AM					
Outlander 330/400/500/570/650/800/850/1000 03-23	Front	12x7	4/136	4+3	0230-1539
	Front/Rear	14x7	4/136	4+3	0230-1542
Renegade 500/570/800/850/1000 09-23	Front	12x7	4/136	4+3	0230-1539
	Front/Rear	14x7	4/136	4+3	0230-1542
Maverick/Max 1000 14-23	Front	12x7	4/136	4+3	0230-1539
	Front/Rear	14x7	4/136	4+3	0230-1542
Commander 800/1000 13-23	Front	12x7	4/136	4+3	0230-1539
	Front/Rear	14x7	4/136	4+3	0230-1542
Defender 16-23	Front	12x7	4/136	4+3	0230-1539
	Front/Rear	14x7	4/136	4+3	0230-1542
Maverick X3 17-23	Front/Rear	14x7	4/136	4+3	0230-1542

FITS MODEL	POSITION	SIZE	BOLT PATTERN	OFFSET	PART #
CFMOTO					
CFORCE 500/600 07-22	Front/Rear	14x7	4/110	4+3	0230-1541
UFORCE 500/600/800 07-22	Front/Rear	14x7	4/110	4+3	0230-1541
ZFORCE 500/800/1000 12-22	Front/Rear	14x7	4/110	4+3	0230-1541
HONDA					
TRX420AT/500AT (IRS) Rancher 09-24	Front	12x7	4/110	4+3	0230-1538
	Front/Rear	14x7	4/110	4+3	0230-1541
TRX650/680/700 Rincon 4x4 02-24 (IRS)	Front	12x7	4/110	4+3	0230-1538
	Front/Rear	14x7	4/110	4+3	0230-1541
TRX500 Foreman Rubicon 15-22 (IRS)	Front	12x7	4/110	4+3	0230-1538
	Front/Rear	14x7	4/110	4+3	0230-1541

26X WHEEL continued on next page.



26X WHEEL (CONT)

FITS MODEL	POSITION	SIZE	BOLT PATTERN	OFFSET	PART #
HONDA (CONT)					
Big Red 700 MUV 09-13	Front	12x7	4/110	4+3	0230-1538
	Front/Rear	14x7	4/110	4+3	0230-1541
Pioneer 500/700 14-24	Front	12x7	4/110	4+3	0230-1538
	Front/Rear	14x7	4/110	4+3	0230-1541
Pioneer 1000 16-24	Front	12x7	4/136	4+3	0230-1539
	Rear	14x7	4/136	4+3	0230-1542
Talon 1000 19-23	Front/Rear	14x7	4/136	4+3	0230-1542
KAWASAKI					
Brute Force 650I 4x4 06-22 (IRS)	Front	12x7	4/110	4+3	0230-1538
	Rear	14x7	4/110	4+3	0230-1541
Brute Force 750 4x4 05-23 (IRS)	Front	12x7	4/110	4+3	0230-1538
	Rear	14x7	4/110	4+3	0230-1541
Teryx 750/800 08-23	Front	12x7	4/136	4+3	0230-1539
	Front/Rear	14x7	4/136	4+3	0230-1542
Mule 2500/3000/ 4010 Series	Front	12x7	4/136	4+3	0230-1539
	Front/Rear	14x7	4/136	4+3	0230-1542
Mule Pro FXT 15-23	Front	12x7	4/156	4+3	0230-1540
	Front/Rear	14x7	4/156	4+3	0230-1543
KRX1000 20-23	Front/Rear	14x7	4/156	4+3	0230-1543
POLARIS					
Sportsman 335 99-06	Front	12x7	4/156	4+3	0230-1540
	Rear	14x7	4/156	4+3	0230-1543
Sportsman 400/450 01-13	Front	12x7	4/156	4+3	0230-1540
	Rear	14x7	4/156	4+3	0230-1543
Sportsman 500 96-13	Front	12x7	4/156	4+3	0230-1540
	Rear	14x7	4/156	4+3	0230-1543
Magnum 500 02-06	Front	12x7	4/156	4+3	0230-1540
	Rear	14x7	4/156	4+3	0230-1543
Sportsman 570 14-17	Front	12x7	4/156	4+3	0230-1540
	Rear	14x7	4/156	4+3	0230-1543
Sportsman 600 03-09	Front	12x7	4/156	4+3	0230-1540
	Rear	14x7	4/156	4+3	0230-1543
Sportsman 700 02-09	Front	12x7	4/156	4+3	0230-1540
	Rear	14x7	4/156	4+3	0230-1543
Sportsman 800 05-14	Front	12x7	4/156	4+3	0230-1540
	Rear	14x7	4/156	4+3	0230-1543
Sportsman XP 550/700/ 800/850/1000 09-22	Front	12x7	4/156	4+3	0230-1540
	Rear	14x7	4/156	4+3	0230-1543
Note: Sportsman XP 2009 is 12,5 cm (5") wider with after market wheels.					
Sportsman X2 500/ 550/800 09-18	Front	12x7	4/156	4+3	0230-1540
	Rear	14x7	4/156	4+3	0230-1543
Sportsman Ace 570/900 14-22	Front	12x7	4/156	4+3	0230-1540
	Rear	14x7	4/156	4+3	0230-1543

SIZE	PATTERN	LOAD RATING	PART #
12x7	4-110	675	0230-1538
12x7	4-136	675	0230-1539
12x7	4-156	675	0230-1540

FITS MODEL	POSITION	SIZE	BOLT PATTERN	OFFSET	PART #
POLARIS (CONT)					
Ranger ETX/570/EV/ 800 6x6 4x4 03-23	Front	12x7	4/156	4+3	0230-1540
	Front/Rear	14x7	4/156	4+3	0230-1543
Ranger 570 (Full size) 14-23	Front	12x7	4/156	4+3	0230-1540
	Front/Rear	14x7	4/156	4+3	0230-1543
Ranger XP900/ 1000 14-23	Front	12x7	4/156	4+3	0230-1540
	Front/Rear	14x7	4/156	4+3	0230-1543
RZR 800/900XP 08-14, RZR 570 14-23	Front	12x7	4/156	4+3	0230-1540
	Front/Rear	14x7	4/156	4+3	0230-1543
RZR 900/900 XC/900 S 15-23	Front	12x7	4/156	4+3	0230-1540
	Front/Rear	14x7	4/156	4+3	0230-1543
RZR 1000 XP/4 14-17-23	Front	12x7	4/156	4+3	0230-1540
	Front/Rear	14x7	4/156	4+3	0230-1543
General 17-23	Front	12x7	4/156	4+3	0230-1540
	Front/Rear	14x7	4/156	4+3	0230-1543
SUZUKI					
King Quad 450/700/ 750 06-23 (IRS)	Front	12x7	4/110	4+3	0230-1538
	Rear	14x7	4/110	4+3	0230-1541
YAMAHA					
Grizzly 350 IRS 07-15	Front	12x7	4/110	4+3	0230-1538
	Rear	14x7	4/110	4+3	0230-1541
Kodiak 400/450 4x4 05-06 (IRS)	Front	12x7	4/110	4+3	0230-1538
	Rear	14x7	4/110	4+3	0230-1541
Grizzly 400/450/550/700 IRS 4x4 07-23	Front	12x7	4/110	4+3	0230-1538
	Rear	14x7	4/110	4+3	0230-1541
Big Bear 400 IRS 07-11	Front	12x7	4/110	4+3	0230-1538
	Rear	14x7	4/110	4+3	0230-1541
Grizzly 660 02-09	Front	12x7	4/110	4+3	0230-1538
	Rear	14x7	4/110	4+3	0230-1541
Kodiak 700 16-22	Front	12x7	4/110	4+3	0230-1538
	Rear	14x7	4/110	4+3	0230-1541
Rhino 450/660/ 700 04-13	Front	12x7	4/110	4+3	0230-1538
	Front/Rear	14x7	4/110	4+3	0230-1541
Viking 700 14-23	Front	12x7	4/110	4+3	0230-1538
	Front/Rear	14x7	4/110	4+3	0230-1541
Wolverine 850 16-23	Front	12x7	4/110	4+3	0230-1538
	Front/Rear	14x7	4/110	4+3	0230-1541
Wolverine Rmax/ Rmax 4 21-23	Front	12x7	4/156	4+3	0230-1540
	Front/Rear	14x7	4/156	4+3	0230-1543
YZ1000R 16-18	Front	12x7	4/110	4+3	0230-1538
	Front/Rear	14x7	4/110	4+3	0230-1541
YZ1000 19-23	Front	12x7	4/156	4+3	0230-1540
	Front/Rear	14x7	4/156	4+3	0230-1543

SIZE	PATTERN	LOAD RATING	PART #
14x7	4-110	700	0230-1541
14x7	4-136	700	0230-1542
14x7	4-156	700	0230-1543



0230-1544

27X WHEEL

- Handles load capacities from 675 lbs for the 12x7 to 700 lbs for the 14x7 which meet or exceed all current market requirements
- Separate yourself from the herd with a line of wheels that are 100% X-rayed on the production line to ensure quality
- Center caps are included with each wheel, but lug nuts must be ordered separately; see page 259 of the 2024 Parts Europe ATV/UTV Tires & Wheels catalog

FITS MODEL	POSITION	SIZE	BOLT PATTERN	OFFSET	PART #
BOMBARDIER/CAN-AM					
Outlander 330/400/ 500/570/650/800/ 850/1000 03-23	Front	12x7	4/136	4+3	0230-1545
	Front/Rear	14x7	4/136	4+3	0230-1548
Renegade 500/570/ 800/850/1000 09-23	Front	12x7	4/136	4+3	0230-1545
	Front/Rear	14x7	4/136	4+3	0230-1548
Maverick/Max 1000 14-23	Front	12x7	4/136	4+3	0230-1545
	Front/Rear	14x7	4/136	4+3	0230-1548
Commander 800/1000 13-23	Front	12x7	4/136	4+3	0230-1545
	Front/Rear	14x7	4/136	4+3	0230-1548
Defender 16-23	Front	12x7	4/136	4+3	0230-1545
	Front/Rear	14x7	4/136	4+3	0230-1548
Maverick X3 17-23	Front/Rear	14x7	4/136	4+3	0230-1548
CFMOTO					
CFORCE 500/ 600 07-22	Front/Rear	14x7	4/110	4+3	0230-1547
UFORCE 500/ 600/800 07-22	Front/Rear	14x7	4/110	4+3	0230-1547
ZFORCE 500/ 800/1000 12-22	Front/Rear	14x7	4/110	4+3	0230-1547
HONDA					
TRX420AT/500AT (IRS) Rancher 09-24	Front	12x7	4/110	4+3	0230-1544
	Front/Rear	14x7	4/110	4+3	0230-1547
TRX650/680/700 Rincon 4x4 02-24 (IRS)	Front	12x7	4/110	4+3	0230-1544
	Front/Rear	14x7	4/110	4+3	0230-1547
TRX500 Foreman Rubicon 15-22 (IRS)	Front	12x7	4/110	4+3	0230-1544
	Front/Rear	14x7	4/110	4+3	0230-1547
Big Red 700 MUV 09-13	Front	12x7	4/110	4+3	0230-1544
	Front/Rear	14x7	4/110	4+3	0230-1547
Pioneer 500/ 700 14-24	Front	12x7	4/110	4+3	0230-1544
	Front/Rear	14x7	4/110	4+3	0230-1547
Pioneer 1000 16-24	Front	12x7	4/136	4+3	0230-1545
	Rear	14x7	4/136	4+3	0230-1548
Talon 1000 19-23	Front/Rear	14x7	4/136	4+3	0230-1548
KAWASAKI					
Brute Force 650I 4x4 06-22 (IRS)	Front	12x7	4/110	4+3	0230-1544
	Rear	14x7	4/110	4+3	0230-1547
Brute Force 750 4x4 05-23 (IRS)	Front	12x7	4/110	4+3	0230-1544
	Rear	14x7	4/110	4+3	0230-1547
Teryx 750/800 08-23	Front	12x7	4/136	4+3	0230-1545
	Front/Rear	14x7	4/136	4+3	0230-1548

FITS MODEL	POSITION	SIZE	BOLT PATTERN	OFFSET	PART #
KAWASAKI (CONT)					
Mule 2500/3000/ 4010 Series	Front	12x7	4/136	4+3	0230-1545
	Front/Rear	14x7	4/136	4+3	0230-1548
Mule Pro FXT 15-23	Front	12x7	4/156	4+3	0230-1546
	Front/Rear	14x7	4/156	4+3	0230-1549
KRX1000 20-23	Front/Rear	14x7	4/156	4+3	0230-1549
POLARIS					
Sportsman 335 99-06	Front	12x7	4/156	4+3	0230-1546
	Rear	14x7	4/156	4+3	0230-1549
Sportsman 400/450 01-13	Front	12x7	4/156	4+3	0230-1546
	Rear	14x7	4/156	4+3	0230-1549
Sportsman 500 96-13	Front	12x7	4/156	4+3	0230-1546
	Rear	14x7	4/156	4+3	0230-1549
Magnum 500 02-06	Front	12x7	4/156	4+3	0230-1546
	Rear	14x7	4/156	4+3	0230-1549
Sportsman 570 14-17	Front	12x7	4/156	4+3	0230-1546
	Rear	14x7	4/156	4+3	0230-1549
Sportsman 600 03-09	Front	12x7	4/156	4+3	0230-1546
	Rear	14x7	4/156	4+3	0230-1549
Sportsman 700 02-09	Front	12x7	4/156	4+3	0230-1546
	Rear	14x7	4/156	4+3	0230-1549
Sportsman 800 05-14	Front	12x7	4/156	4+3	0230-1546
	Rear	14x7	4/156	4+3	0230-1549
Sportsman XP 550/700/800/ 850/1000 09-22	Front	12x7	4/156	4+3	0230-1546
	Rear	14x7	4/156	4+3	0230-1549
Note: Sportsman XP 2009 is 12.5 cm (5") wider with after market wheels.					
Sportsman X2 500/ 550/800 09-18	Front	12x7	4/156	4+3	0230-1546
	Rear	14x7	4/156	4+3	0230-1549
Sportsman Ace 570/900 14-22	Front	12x7	4/156	4+3	0230-1546
	Rear	14x7	4/156	4+3	0230-1549
Ranger ETX/570/EV/ 800 6x6 4x4 03-23	Front	12x7	4/156	4+3	0230-1546
	Front/Rear	14x7	4/156	4+3	0230-1549
Ranger 570 (Full size) 14-23	Front	12x7	4/156	4+3	0230-1546
	Front/Rear	14x7	4/156	4+3	0230-1549
Ranger XP900/ 1000 14-23	Front	12x7	4/156	4+3	0230-1546
	Front/Rear	14x7	4/156	4+3	0230-1549

27X WHEEL continued on next page.



27X WHEEL (CONT)

FITS MODEL	POSITION	SIZE	BOLT PATTERN	OFFSET	PART #
POLARIS (CONT)					
RZR 800/900XP 08-14, RZR 570 14-23	Front	12x7	4/156	4+3	0230-1546
	Front/Rear	14x7	4/156	4+3	0230-1549
RZR 900/900 XC/ 900 S 15-23	Front	12x7	4/156	4+3	0230-1546
	Front/Rear	14x7	4/156	4+3	0230-1549
RZR 1000 XP/4 14-17-23	Front	12x7	4/156	4+3	0230-1546
	Front/Rear	14x7	4/156	4+3	0230-1549
General 17-23	Front	12x7	4/156	4+3	0230-1546
	Front/Rear	14x7	4/156	4+3	0230-1549
SUZUKI					
King Quad 450/700/ 750 06-23 (IRS)	Front	12x7	4/110	4+3	0230-1544
	Rear	14x7	4/110	4+3	0230-1547
YAMAHA					
Grizzly 350 IRS 07-15	Front	12x7	4/110	4+3	0230-1544
	Rear	14x7	4/110	4+3	0230-1547
Kodiak 400/450 4x4 05-06 (IRS)	Front	12x7	4/110	4+3	0230-1544
	Rear	14x7	4/110	4+3	0230-1547
Grizzly 400/450/550/ 700 IRS 4x4 07-23	Front	12x7	4/110	4+3	0230-1544
	Rear	14x7	4/110	4+3	0230-1547
SIZE	PATTERN	LOAD RATING	PART #		
12x7	4-110	675	0230-1544		
12x7	4-136	675	0230-1545		
12x7	4-156	675	0230-1546		

FITS MODEL	POSITION	SIZE	BOLT PATTERN	OFFSET	PART #
YAMAHA (CONT)					
Big Bear 400 IRS 07-11	Front	12x7	4/110	4+3	0230-1544
	Rear	14x7	4/110	4+3	0230-1547
Grizzly 660 02-09	Front	12x7	4/110	4+3	0230-1544
	Rear	14x7	4/110	4+3	0230-1547
Kodiak 700 16-22	Front	12x7	4/110	4+3	0230-1544
	Rear	14x7	4/110	4+3	0230-1547
Rhino 450/660/ 700 04-13	Front	12x7	4/110	4+3	0230-1544
	Front/Rear	14x7	4/110	4+3	0230-1547
Viking 700 14-23	Front	12x7	4/110	4+3	0230-1544
	Front/Rear	14x7	4/110	4+3	0230-1547
Wolverine 850 16-23	Front	12x7	4/110	4+3	0230-1544
	Front/Rear	14x7	4/110	4+3	0230-1547
Wolverine Rmax/ Rmax 4 21-23	Front	12x7	4/156	4+3	0230-1546
	Front/Rear	14x7	4/156	4+3	0230-1549
YZZ1000R 16-18	Front	12x7	4/110	4+3	0230-1544
	Front/Rear	14x7	4/110	4+3	0230-1547
YZZ1000 19-23	Front	12x7	4/156	4+3	0230-1546
	Front/Rear	14x7	4/156	4+3	0230-1549
SIZE	PATTERN	LOAD RATING	PART #		
14x7	4-110	700	0230-1547		
14x7	4-136	700	0230-1548		
14x7	4-156	700	0230-1549		



XCR FRONT BRAKE PADS BY DP BRAKES

- XCR pads are constructed of durable sintered metal, which stands up to the toughest conditions and provides equal braking power wet or dry

FITS MODEL	PART #
POLARIS	
RZR Turbo R Sport/Premium/Ultimate - 2 Seat 22-24	1721-3571
RZR Turbo R 4 Sport/Premium/Ultimate - 4 Seat 22-24	1721-3571
RZR XP 4 Turbo S 19-20	1721-3571
RZR XP 4 Turbo S Velocity 19-20	1721-3571
RZR Pro R Turbo R Premium/Sport/Ultimate - 2 Seat 22-24	1721-3571



FITS MODEL	PART #
POLARIS (CONT)	
RZR Pro R 4 Turbo R 4 Premium/Sport/Ultimate - 4 Seat 22-24	1721-3571
SEGWAY	
Super Villain SX 20 Hybrid - 2 Seat Model 23-24	1721-3571
Super Villain SX 20 Turbo - 2 Seat Model 23-24	1721-3571



BRAKE PAD PIN SETS

- Includes required quantities for front and rear brake pad hanger pin sets
- Made for OEM applications to fit GasGas, Husqvarna and KTM applications

FITS MODEL	SET FRONT/REAR
GASGAS	
MC 65 21-23	1702-0752
MC 85 21-23	1702-0753

FITS MODEL	SET FRONT/REAR
HUSQVARNA	
TC 65 23	1702-0752
TC 85 21-23	1702-0753



1702-0752



1702-0755



1702-0756

BRAKE CALIPER REBUILD KITS

- Each kit includes all necessary rubber components and brake pins if it's applicable
- Applications cover most popular models

FITS MODEL	FRONT PART #	REAR PART #
BETA		
RX 300 2T 21-23	1702-0755	-
RR 2T Racing 125 21-23	1702-0755	-
RR 2T 125 19-23	1702-0755	-
RR 2T 200 19-23	1702-0755	-
RR 2T Racing 250 22-23	1702-0755	-
RR 2T 250 13-23	1702-0755	-
RR 2T Racing 300 22-23	1702-0755	-
RR 2T 300 13-23	1702-0755	-
RR 4T 250 05-07	1702-0755	-
RR 4T Racing 350 22-23	1702-0755	-
RR 4T 350 11-23	1702-0755	-
RR 4T Racing 390 22-23	1702-0755	-
RR 4T 390 15-23	1702-0755	-
RR 4T 400 05-14	1702-0755	-
RR 4T Racing 430 22-23	1702-0755	-
RR 4T 430 15-23	1702-0755	-
RR 4T 450 05-14	1702-0755	-
RR 4T 480 Racing 22-23	1702-0755	-

FITS MODEL	FRONT PART #	REAR PART #
BETA (CONT)		
RR 4T 480 18-23	1702-0755	-
RR 4T 498 12-14	1702-0755	-
RR 4T 520 10-11	1702-0755	-
RR 4T 525 05-09	1702-0755	-
RS 4T 350 17-23	1702-0755	-
Xtrainer 300 15-23	1702-0755	-
GASGAS		
MC 65 23	1702-0756	1702-0756
MC 85 17/14 22-23	1702-0754	1702-0756
MC 85 19/16 22-23	1702-0754	1702-0756
HUSQVARNA		
TC 65 23-24	1702-0756	1702-0756
TC 85 22-24	1702-0754	1702-0756
TC 85 19/16 23-24	1702-0754	1702-0756
KTM		
SX 65 23-24	1702-0756	1702-0756
SX 85 21-24	1702-0754	1702-0756
SX 85 19/16 22-24	1702-0754	1702-0756

Moose
RACING

1132-1962

CLUTCH MASTER CYLINDER REPAIR KITS

- Kits contain all of the components to rebuild leaking master cylinders
- Includes replacement hard anodized aluminum piston, replacement cover screws, boot and spring

FITS MODEL	PART #
GASGAS	
MC 125 24	1132-1962
MC 250 24	1132-1962
MC 350F 24	1132-1962
MC 450F 24	1132-1962
EC 250 21-24	1132-1962
EC 450F 24	1132-1962
EW 500F 24	1132-1962
EX 250 24	1132-1962
HUSQVARNA	
FE 350 22-23	1132-1962
FE 450 Heritage Edition 23	1132-1962
FE 450 23-24	1132-1962
FE 501 22-23	1132-1962
TE 150 Heritage Edition 23	1132-1962
TE 150 22-24	1132-1962
TE 250 22-24	1132-1962
TE 300 Heritage Edition 23	1132-1962
TE 300 22-24	1132-1962
SHERCO	
SCF-R 250 19	1132-1960
SCF-R 300 19	1132-1960

FITS MODEL	PART #
SHERCO (CONT)	
SCF-R 450 19-20	1132-1960
SC-R 125 19	1132-1961
SC-R 250 19	1132-1960
SC-R 300 19	1132-1960
SE 125 Factory 21-23	1132-1961
SE 2.5i-F 13	1132-1960
SE 2.5i-F Racing 13	1132-1960
SE 250 13	1132-1960
SE 250 Factory 23	1132-1961
SE 250i-R 12	1132-1960
SE 3.0i-F 13	1132-1960
SE 3.0i-F Racing 13	1132-1960
SE 300 13	1132-1960
SE 300 Factory 21-23	1132-1961
SE 300i-R 12	1132-1960
SEF-R 300 14-18	1132-1960
SEF 450 Factory 23	1132-1961
SEF 500 Factory 21-23	1132-1961
SEF-R 250 14-18	1132-1960
SEF-R 250 Factory 16-23	1132-1960
SEF-R 250 Six Days 18	1132-1960

FITS MODEL	PART #
SHERCO (CONT)	
SEF-R 300 Factory 16-23	1132-1960
SEF-R 300 Six Days 18	1132-1960
SEF-R 450 15-20	1132-1960
SEF-R 450 21	1132-1961
SEF-R 450 Factory 16-20	1132-1960
SEF-R 450 Factory 21-22	1132-1961
SEF-R 450 Six Days 18	1132-1960
SE-R 125 18-19	1132-1961
SE-R 125 20	1132-1960
SE-R 125 21	1132-1961
SE-R 125 Six Days 18	1132-1961
SE-R 250 14-20	1132-1960
SE-R 250 21-22	1132-1961
SE-R 250 Factory 16-20	1132-1960
SE-R 250 Factory 21	1132-1961
SE-R 300 14-20	1132-1960
SE-R 300 21-22	1132-1961
SE-R 300 Factory 16-20	1132-1960
SE-R 300 Six Days 18	1132-1960
SM 125 Factory 21	1132-1961
SM 500 Factory 21	1132-1960

SLAVE CYLINDER REBUILD KIT

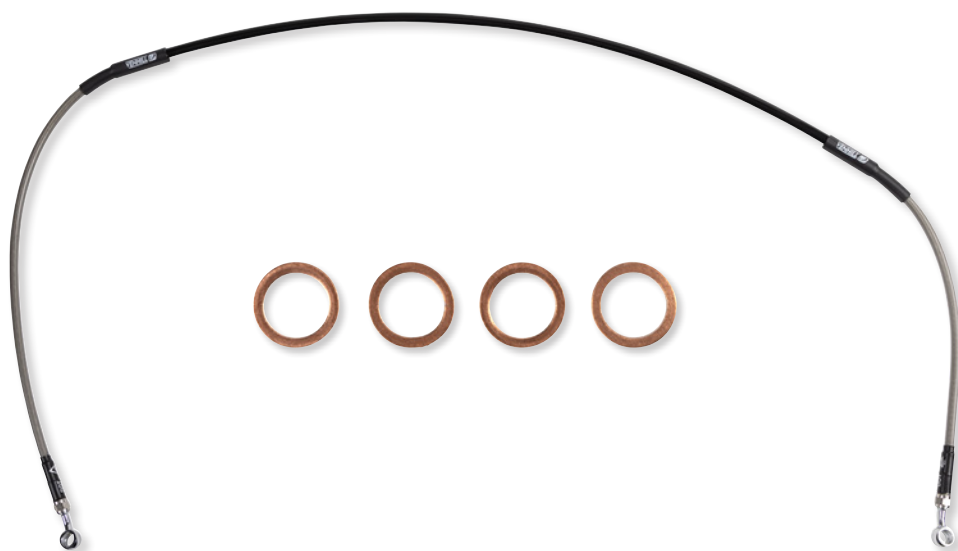
- Kit contains all of the components to rebuild leaking slave cylinder
- Kit includes copper washer, seal, O-rings, gaskets, spring and screws

FITS MODEL	PART #
HUSQVARNA	
FC 350 23-24	0950-1028
FC 350 Heritage Edition 23	0950-1028
FC 450 Rockstar Edition 22-24	0950-1028

FITS MODEL	PART #
KTM	
SX-F 250 23-24	0950-1028
SX-F 350 23-24	0950-1028
SX-F 450 23-24	0950-1028

FITS MODEL	PART #
KTM (CONT)	
SX-F 450 Factory Edition 23	0950-1028





STAINLESS STEEL BRAIDED BRAKE LINES

- Swivel union ends are the secret to easier fitting, and ensure a kink- and stress-free installation
- Venhill Engineering in the UK makes Moose Racing Stainless Steel Brake lines to the highest specifications
- Each line is made from top-quality PTFE-coated hose, wrapped with British-made stainless steel and PVC-coated for protection and great looks
- Rubber protection boots and extra rigid tubing are used to protect vulnerable areas from heat and impact and to prevent hose flex under compression
- Each line is designed to withstand a minimum of 14.000 psi
- Installing our stainless lines gives a large performance increase by significantly reducing expansion under pressure, and absorption of water when compared to stock rubber hoses

FITS MODEL	FRONT BRAKE LINE PART #	REAR BRAKE LINE PART #
GASGAS		
MC 125 05-09	1741-6404	-
MC 250 05-10	1741-6404	-
EC 125 03-11, EC 125 Racing 13-14	1741-6404	-
EC 200 03-09/11/14/18-19, EC 200 Racing 13-15	1741-6404	-
EC 250 00-14/17-19, EC 250 Racing 12-18	1741-6404	-
EC 250F 10-15	1741-6404	-
EC 300 00-14/17-19, EC 300 Racing 12-15/17-18	1741-6404	-
EC 300F 13-15	1741-6404	-
EC 400FSE 03-07, EC 450 09, EC 450F 14-15, EC 450FSR 09	1741-6404	-
EC 515FSR 09	1741-6404	-
XC 200 18-19	1741-6404	-
XC 250 18-19	1741-6404	-
XC 300 18-19	1741-6404	-
KAWASAKI		
KX65 01-02	1741-6523	1741-6524
KX65 12-24	1741-6545	1741-6554
KX85 14-24	1741-6525	1741-6536
KX85 Big Wheel 12-13	-	1741-6526
KX85 Big Wheel 14-24	1741-6525	1741-6526

FITS MODEL	FRONT BRAKE LINE PART #	REAR BRAKE LINE PART #
KAWASAKI (CONT)		
KX100 14-21	1741-6525	1741-6526
KX112 22-23	1741-6525	1741-6526
KX250F 13-18	1741-6544	1741-6553
KX250F 19-20 (BKF-BLF)	1741-6544	1741-6550
KX250F 19 (AKF)	1741-6544	1741-6553
KX250 21-23	-	1741-6546
KX250X 21	1741-6546	1741-6550
KX250X 22-24	1741-6546	1741-6550
KX450F 12	-	1741-6553
KX450F 13-18	1741-6544	1741-6553
KLX140 08-23	1741-6540	1741-6547
KLX140 L 08-23	1741-6540	1741-6547
KLX250 (USA) 06-07	-	1741-6532
KLX250 12-20	1741-6533	1741-6534
KLX250S 09-13	-	1741-6532
KLX250S 14	1741-6533	1741-6534
KLX250SF 09-10	-	1741-6532
KLX300 21-23	1741-6533	1741-6534
KLX300 24	-	1741-6534
KLX300R 20-24	1741-6542	1741-6555
KLX300SM 21-24	-	1741-6534
KLX450R 18-23	-	1741-6553




REAR INDEPENDENT SUSPENSION KITS

- Cost-effective kit containing all bearings, bushings, seals, shafts and miscellaneous components to repair the rear upper and lower A-arms and knuckle
- Two kits required per vehicle

NOTE: Arctic Cat and Polaris kits contain bushings only.

FITS MODEL	REAR INDEPENDENT SUSPENSION KIT PART #	REAR INDEPENDENT SUSPENSION KNUCKLE KIT ONLY PART #	REAR INDEPENDENT SUSPENSION BUSHING ONLY KIT PART #
ARCTIC CAT			
Wildcat Trail LTD 20	0430-1329	-	-
Wildcat Trail XT 20	0430-1329	-	-
POLARIS			
Sportsman 850 High Lifter 20	-	-	0430-1328
General XP 1000 EPS 20	-	0430-1331	-
General XP 1000 EPS Deluxe 21-22	-	0430-1331	-
General XP 1000 EPS Factory Custom Edition 21	-	0430-1331	-
General XP 4 1000 EPS Deluxe 21-22	-	0430-1331	-
General XP 4 1000 EPS Factory Custom Edition 21	-	0430-1331	-
Sportsman 1000 XP Tractor 18-19	-	-	0430-1328
Sportsman 1000 XP Ultimate Trail 22-23	-	-	0430-1328
Sportsman Touring 1000 22-23	-	-	0430-1328
Sportsman Touring 1000 Tractor 18	-	-	0430-1328

UPPER AND LOWER SHOCK BEARING AND BUSHING KITS

- Each kit contains the bearing and all of the seals, spacers and pins to rebuild the shock bearings to factory specifications
- Constructed from OEM quality components at a fraction of the cost



FITS MODEL	UPPER FRONT SHOCK BEARING KIT PART #	LOWER FRONT SHOCK BEARING KIT PART #	UPPER REAR SHOCK BEARING KIT PART #	LOWER REAR SHOCK BEARING KIT PART #
ARCTIC CAT				
Prowler 500 HDX 14-15	1313-0254	1313-0254	1313-0254	1313-0254
Prowler 500 HDX LTD 14	1313-0254	1313-0254	1313-0254	1313-0254
Prowler 500 HDX XT 14	1313-0254	1313-0254	1313-0254	1313-0254
Prowler 700 Crew HDX XT 17	1313-0254	1313-0254	-	-
Prowler 700 HDX 12-14	1313-0254	1313-0254	-	-
Prowler 700 HDX XT 15-17	1313-0254	1313-0254	-	-
Prowler 700 HDX XT SE 16	1313-0254	1313-0254	-	-
Prowler 700 XT 15-17	1313-0254	1313-0254	-	-
Prowler 1000 XT 15-17	1313-0254	1313-0254	1313-0254	1313-0254

UPPER AND LOWER SHOCK BEARING AND BUSHING KITS continued on next page.



UPPER AND LOWER SHOCK BEARING AND BUSHING KITS (CONT)

FITS MODEL	UPPER FRONT SHOCK BEARING KIT PART #	LOWER FRONT SHOCK BEARING KIT PART #	UPPER REAR SHOCK BEARING KIT PART #	LOWER REAR SHOCK BEARING KIT PART #
POLARIS				
Scrambler XP 850 H.O. EPS INTL 14	-	1313-0251	1313-0253	1313-0252
Scrambler 1000 MD 15	-	1313-0251	1313-0253	1313-0252
Scrambler 1000 Tractor 18	-	1313-0251	1313-0253	1313-0252
Scrambler 1000 XP 15-18	-	1313-0251	1313-0253	1313-0252
Scrambler 1000 XP EU 15-20	-	1313-0251	1313-0253	1313-0252
Scrambler 1000 XP H.O. EPS 14-15	-	1313-0251	1313-0253	1313-0252
Scrambler 1000 XP H.O. EPS INTL 14	-	1313-0251	1313-0253	1313-0252
Scrambler 1000 XP Tractor 19	-	1313-0251	1313-0253	1313-0252
Scrambler 1000 XP ZUG 17-19	-	1313-0251	1313-0253	1313-0252



A-ARM BEARING AND SEAL KITS

- Direct OEM replacement parts designed to rebuild the A-arm to factory specification
- Precision-ground A-arm shaft manufactured from 52100 heat-treated bearing steel for improved performance and extended life
- Kit contains bearings, pins, spacers and seals to rebuild one A-arm

FITS MODEL	FRONT LOWER A-ARM BEARING/SEAL KIT PART #	FRONT UPPER A-ARM BEARING/SEAL KIT PART #
Sportsman 570 SP EPS Tractor 18-19	-	0430-1339
Sportsman 850 High Lifter 20	0430-1339	0430-1339
Sportsman 850 High Lifter 21-23	0430-1339	0430-1339
Sportsman 850 Ultimate Trail Edition 21-23	0430-1339	0430-1339
Scrambler 1000 XP 55 20	0430-1340	0430-1339
Scrambler 1000 XP 55 21-23	0430-1340	0430-1339
Sportsman 1000 High Lifter 21-23	0430-1339	0430-1339
Sportsman 1000 XP 55 20-23	0430-1340	0430-1339
Sportsman 1000 XP Tractor 18-19	0430-1339	0430-1339
Sportsman 1000 XP Ultimate Trail 22-23	0430-1339	0430-1339
Sportsman Touring 1000 22-23	0430-1339	0430-1339
Sportsman Touring 1000 Tractor 18	0430-1339	0430-1339

FORK BUSHING KIT

- Bushings are dyno-tested to 500,000 strokes with less wear than OEM bushings
- Kit includes two slider bushings and two leg bushings
- Kit includes all copper washers and O-rings
- Kit includes two fork seal snap rings



FITS MODEL	PART #	FITS MODEL	PART #
HONDA		HONDA (CONT)	
CRF110F 14-24	0450-0687	CRF125FB 14-24	0450-0687
CRF125F 14-24	0450-0687	XR150LE 23	0450-0687



FRONT FORK SPRING KITS

- Shorter braking distance
- Better balance in the bike, more comfortable riding, even with passenger
- Easy cornering
- Improved tire life
- More grip in dry and wet weather
- More confidence; it makes your ride more comfortable and/or faster
- Overall sense of confidence in the bike
- Hyperpro progressive front fork spring kits include front fork oil

FITS MODEL	PART #
BMW	
F 900 GS Enduro 24	0405-1219
F 900 GS (w/ ESA) 24-25	0405-1224
HONDA	
NX500 24-25	0405-1218

FITS MODEL	PART #
SUZUKI	
DL800 V-Strom 24	0405-1222
DL1050 V-Strom/XT 20-21	0405-1221
DL1050 V-Strom DE 23-24	0405-1220
YAMAHA	
MT-09 24	0405-1223

REAR SHOCK SPRING FOR HUSQVARNA NORDEN 901 22-23

- Progressive rear spring is designed to smoothly transfer engine power to the road while controlling your bike, ensuring more stability and will significantly reduce tire wear
- Shorter braking distance
- Better balance in the bike, more comfortable riding, even with passenger
- Easy cornering
- More grip in dry and wet weather
- More confidence, it makes you feel more comfortable and/or faster
- Overall sense of confidence in the bike
- Available in black



FITS MODEL	PART #
Rear shock spring	1312-1098

LOWERING SPRING KITS

- Lowering springs for original shocks
- Spring rate is designed to perform better than the original
- Available in either dual or rear placement position
- Made of lightweight aluminum
- CNC machined
- Easy mounting and perfect fitment
- Springs are black (unless noted in chart)



1304-1118

FITS MODEL	LOWERING DISTANCE	POSITION	PART #
BMW			
F 900 GS Enduro 24	25 mm	Rear	1304-1120
F 900 GS Enduro (w/ ESA) 24-25	25 mm	Rear	1304-1121

FITS MODEL	LOWERING DISTANCE	POSITION	PART #
SUZUKI			
DL800 V-Strom 24	25 mm	Rear	1304-1118
YAMAHA			
MT-09 24	20 mm	Rear	1304-1119



EFI FUEL PUMP REBUILD KITS

- Kit includes all necessary parts to rebuild the OEM fuel pump module
- Kit includes: pump, filter, hoses, clamps, wiring harness and filter if needed
- Restore lost performance or non-functioning fuel pump with this economical solution
- Kits come ready for plug-and-play installation

FITS MODEL	PART #
GASGAS	
MC 250 24	1009-0192
MC 250F Factory Edition 23-24	1009-0192
MC 250F 24	1009-0192
MC 350F 24	1009-0192
MC 450F Factory Edition 23-24	1009-0192
MC 450F 24	1009-0192
EC 250 24	1009-0192
EC 300 24	1009-0192
EC 450F 24	1009-0192
ES 350 24	1009-0192
EX 250F 24	1009-0192
EX 300 24	1009-0192
EX 350F 24	1009-0192
EX 450F 24	1009-0192
EW 500F 24	1009-0192
HONDA	
CRF250R 22-24	1009-0191
CRF450R 21-24	1009-0191
CRF450RWE 21-24	1009-0191
HUSQVARNA	
FC 250 Heritage Edition 23	1009-0192
FC 250 23-24	1009-0192
FC 350 Heritage Edition 23	1009-0192
FC 350 23-24	1009-0192
FC 450 Heritage Edition 23	1009-0192
FC 450 23-24	1009-0192
TC 125 Heritage Edition 23	1009-0192
TC 125 23-24	1009-0192

FITS MODEL	PART #
HUSQVARNA (CONT)	
TC 250 Heritage Edition 23	1009-0192
TC 250 23-24	1009-0192
FE 450 24	1009-0192
TE 150 24	1009-0192
TE 300 24	1009-0192
KTM	
SX-F 250 Factory Edition 24	1009-0192
SX-F 250 24	1009-0192
SX-F 350 24	1009-0192
SX-F 450 Factory Edition 22-24	1009-0192
SX-F 450 24	1009-0192
SX 125 24	1009-0192
SX 250 24	1009-0192
SX 300 24	1009-0192
EXC-F 350 24	1009-0192
EXC-F 500 Six Days 24	1009-0192
EXC-F 500 24	1009-0192
EXC 150 24	1009-0192
EXC 250 24	1009-0192
EXC 300 24	1009-0192
EXC Hardenduro 300 24	1009-0192
XC 125 23-24	1009-0192
YAMAHA	
YZ250FX 20-22	1009-0190
YZ450FX 19-22	1009-0190
WR250F 20-21	1009-0190
WR450F 20-21	1009-0190

FLOAT BOWL GASKETS

- Direct OEM replacement
- Sold each



0934-7819



0934-7820

ATV APPLICATIONS

FITS MODEL	PART #
POLARIS	
Outlaw 50 08-19	0934-7819
Predator 50 07	0934-7819
SUZUKI	
LT-Z50 06-22	0934-7820

FITS MODEL	PART #
YAMAHA	
YFZ50 14-15	0934-7819
YFM90 Raptor 14-15	0934-7818

OFFROAD MOTORCYCLE APPLICATIONS

FITS MODEL	PART #
SUZUKI	
DR-Z50 14-21	0934-7820
DR-Z70 14-21	0934-7820



1011-4921



1011-4922



PRECISION PRE-OILED AIR FILTERS

- High-technology machine pre-oils filters to perfection while leaving no excess
- With the precision pre-oiled air filter, there is no excess oil to rob horsepower, and no dry spots endangering your engine
- Oiled with high tack and bio-friendly, FLAME RESISTANT Moose Racing Super Seal Filter Oil
- Save the hassle and get it done for only a dollar over the cost of regular Moose Racing Air Filters
- Includes re-sealable filter bag

FITS MODELS	PART #
GASGAS	
MC 50 24	1011-4921
MC 65 24	1011-4922
HUSQVARNA	
TC 50 24	1011-4921
TC 65 24	1011-4922

FITS MODELS	PART #
KAWASAKI	
KX450 24	1011-4920
KTM	
SX 50 24	1011-4921
SX 65 24	1011-4922



AXLE STRAPS

- 76 cm (30") overall working length
- 50,8 mm (2") polyester webbing with protective sheath
- 1.814 kg (4.000 lb) working load capacity
- Heavy-duty zinc-plated flat D-rings
- Sold in pairs



DESCRIPTION	PART #
Axle straps	3920-0522



QUALIFIER JERSEYS

- Non-fading sublimated graphics
- Durable polyester fabric
- Performance-fitted cuffs
- Relaxed fit
- Pro-rider tested
- See size chart on page 39 before ordering

SIZE	(A) BLACK/WHITE	(B) ORANGE/BLACK
S	2910-8151	2910-8167
M	2910-8152	2910-8168
L	2910-8153	2910-8169
XL	2910-8154	2910-8170

SIZE	(A) BLACK/WHITE	(B) ORANGE/BLACK
2X	2910-8155	2910-8171
3X	2910-8156	2910-8172
4X	2910-8157	2910-8173
5X	2910-8158	2910-8174

QUALIFIER PANTS

- High-denier abrasion-resistant polyester
- Pre-curved leg for ergonomic riding position
- Three-point waist adjustment system
- Non-fading sublimated graphics
- YKK® auto locking zipper
- Relaxed fit
- See size chart on page 39 before ordering

SIZE	(C) RED/WHITE/BLUE	(D) GRAY/TEAL
S	2910-8175	2910-8183
M	2910-8176	2910-8184
L	2910-8177	2910-8185
XL	2910-8178	2910-8186

SIZE	(C) RED/WHITE/BLUE	(D) GRAY/TEAL
2X	2910-8179	2910-8187
3X	2910-8180	2910-8188
4X	2910-8181	2910-8189
5X	2910-8182	2910-8190

SIZE	(E) BLACK/WHITE	(F) ORANGE/BLACK
Europe 44 (USA 28)	2901-11733	2901-11794
Europe 46 (USA 30)	2901-11734	2901-11795
Europe 48 (USA 32)	2901-11735	2901-11796
Europe 50 (USA 34)	2901-11736	2901-11797
Europe 52 (USA 36)	2901-11737	2901-11798

SIZE	(E) BLACK/WHITE	(F) ORANGE/BLACK
Europe 54 (USA 38)	2901-11738	2901-11799
Europe 56 (USA 40)	2901-11739	2901-11800
Europe 58 (USA 42)	2901-11740	2901-11801
Europe 60 (USA 44)	2901-11774	2901-11802
Europe 62 (USA 46)	2901-11775	2901-11803

SIZE	(E) BLACK/WHITE	(F) ORANGE/BLACK
Europe 64 (USA 48)	2901-11776	2901-11804
Europe 66 (USA 50)	2901-11777	2901-11805
Europe 68 (USA 52)	2901-11778	2901-11806
Europe 70 (USA 54)	2901-11779	2901-11807

SIZE	(G) RED/WHITE/BLUE	(H) GRAY/TEAL
Europe 44 (USA 28)	2901-11808	2901-11822
Europe 46 (USA 30)	2901-11809	2901-11823
Europe 48 (USA 32)	2901-11810	2901-11824
Europe 50 (USA 34)	2901-11811	2901-11825
Europe 52 (USA 36)	2901-11812	2901-11826

SIZE	(G) RED/WHITE/BLUE	(H) GRAY/TEAL
Europe 54 (USA 38)	2901-11813	2901-11827
Europe 56 (USA 40)	2901-11814	2901-11828
Europe 58 (USA 42)	2901-11815	2901-11829
Europe 60 (USA 44)	2901-11816	2901-11830
Europe 62 (USA 46)	2901-11817	2901-11831

SIZE	(G) RED/WHITE/BLUE	(H) GRAY/TEAL
Europe 64 (USA 48)	2901-11818	2901-11832
Europe 66 (USA 50)	2901-11819	2901-11833
Europe 68 (USA 52)	2901-11820	2901-11834
Europe 70 (USA 54)	2901-11821	2901-11835

**MOOSE
RACING****AGROID PANTS**

- Pre-curved leg for ergonomic riding position
- Lightweight breathable stretch polyester chassis
- Perforated leg panels for ventilation
- Full grain leather inner knee panels
- Durable stretch rip-stop seat and knees
- Slim fit over knee braces or guards
- 3-point waist adjustment system
- Non-fading sublimated graphics
- YKK® auto locking zipper
- Pro-rider-tested
- Athletic fit
- See size chart below before ordering

SIZE	(A) BLUE/WHITE	(B) NAVY/WHITE	(C) BROWN/BLACK
Europe 42 (USA 26) slim	2901-11741	2901-11752	2901-11763
Europe 44 (USA 28) slim	2901-11742	2901-11753	2901-11764
Europe 44 (USA 28)	2901-11744	2901-11755	2901-11766
Europe 46 (USA 30) slim	2901-11743	2901-11754	2901-11765
Europe 46 (USA 30)	2901-11745	2901-11756	2901-11767
Europe 48 (USA 32)	2901-11746	2901-11757	2901-11768

SIZE	(A) BLUE/WHITE	(B) NAVY/WHITE	(C) BROWN/BLACK
Europe 50 (USA 34)	2901-11747	2901-11758	2901-11769
Europe 52 (USA 36)	2901-11748	2901-11759	2901-11770
Europe 54 (USA 38)	2901-11749	2901-11760	2901-11771
Europe 56 (USA 40)	2901-11750	2901-11761	2901-11772
Europe 58 (USA 42)	2901-11751	2901-11762	2901-11773

MOOSE RACING SIZING GUIDES**GARMENT SIZING INFORMATION**

- The charts below will help you select the proper size. If you have any questions, please contact moosecomments@mooseracing.com or contact your nearest Parts Unlimited dealer.

CARE INSTRUCTIONS

- Moose Racing does not recommend dry cleaning for any products. All products are machine washable. You should use a commercial front-loading machine and follow the care instructions for each garment.

JERSEYS

- Chest measurement: With tape level, measure around the fullest part of the chest, just under the arms and around the shoulder blades
- Sleeve measurement: With elbow slightly bent, measure from the center back of neck, over point of shoulder, around elbow and down to 13 mm (1/2") past wrist bone
- Jerseys are generously sized for comfort, mobility, and to be worn over low-profile roost shields/guards

PANTS

- The sizing information below will help you select the proper size; sizing by measurement in inches
- Inseam measurement: measure from the crotch to the bottom of the leg
- Race pants will have shorter inseam to accommodate wearing the pant on the inside of boots, Outerwear pants will be more similar to casual pants as these are designed to be worn over boots

SIZE	CHEST	SLEEVE LENGTH
RACEWEAR JERSEYS: SAHARA/M1/QUALIFIER		
S	104 cm - 109 cm (41"-43")	84 cm - 86 cm (33"-34")
M	109 cm - 114 cm (43"-45")	86 cm - 89 cm (34"-35")
L	114 cm - 119 cm (45"-47")	89 cm - 91 cm (35"-36")
XL	119 cm - 124 cm (47"-49")	91 cm - 94 cm (36"-37")

SIZE WAIST	CINCHED/EXPANDED	INSEAM
RACEWEAR PANTS: SAHARA/M1/QUALIFIER/QUALIFIER OVER-THE-BOOT		
26 slim	61 cm - 68,5 cm (24"-27")	71 cm (28")
28 slim	66 cm - 73,5 cm (26"-29")	71 cm (28")
30 slim	71 cm - 79 cm (28"-31")	74 cm (29")
28	69 cm - 76 cm (27"-30")	74 cm (29")
30	74 cm - 81 cm (29"-32")	74 cm (29")
32	79 cm - 86 cm (31"-34")	78 cm (30")
34	84 cm - 91 cm (33"-36")	79 cm (31")
36	89 cm - 97 cm (35"-38")	81 cm (32")
38	94 cm - 102 cm (37"-40")	81 cm (32")

SIZE	CHEST	SLEEVE LENGTH
RACEWEAR JERSEYS: SAHARA/M1/QUALIFIER (CONT)		
2X	124 cm - 130 cm (49"-51")	94 cm - 97 cm (37"-38")
3X	130 cm - 135 cm (51"-53")	97 cm - 99 cm (38"-39")
4X	135 cm - 140 cm (53"-55")	99 cm - 102 cm (39"-40")
5X	140 cm - 145 cm (55"-57")	102 cm - 104 cm (40"-41")

SIZE WAIST	CINCHED/EXPANDED	INSEAM
RACEWEAR PANTS: SAHARA/M1/QUALIFIER/QUALIFIER OVER-THE-BOOT (CONT)		
40	99 cm - 107 cm (39"-42")	84 cm (33")
42	104 cm - 112 cm (41"-44")	84 cm (33")
44	109 cm - 112 cm (43"-44")	84 cm (33")
46	114 cm - 122 cm (45"-48")	84 cm (33")
48	119 cm - 127 cm (47"-50")	84 cm (33")
50	122 cm - 132 cm (48"-52")	84 cm (33")
52	127 cm - 137 cm (50"-54")	84 cm (33")
54	132 cm - 142 cm (52"-56")	84 cm (33")



MEN'S MOTOTANKER™ JACKET

- Classic canvas work jacket with a moto-makeover
- ICON® Relaxed Fit with rugged canvas construction works both on and off the bike
- Ax® Laredo accents add crucial reinforcement and punctuate style
- Internal 300D polyester panels increase durability
- Low-profile D3O® Ghost shoulder and elbow impact protectors increase security without sacrificing style or comfort
- D3O Viper back protector provides full coverage support
- Includes removable insulated vest liner
- Chest and cuff vents for warm weather riding
- Waist adjuster for a custom fit
- See ICON Europe size conversion chart below before ordering
- Tested and certified to EN 17092-4:2020 Class A
- Tested and certified to EN 1621-2:2014/ EN 1621-1:2012 - D3O removable Viper back protector; elbow and shoulder Ghost impact protectors

B



Back view

SIZE	(A) BLACK	(B) GRAY
S	2820-6956	2820-6962
M	2820-6957	2820-6963

SIZE	(A) BLACK	(B) GRAY
L	2820-6958	2820-6964
XL	2820-6959	2820-6965

SIZE	(A) BLACK	(B) GRAY
2X	2820-6960	2820-6966
3X	2820-6961	2820-6967

SIZE	S	M	L	XL	2X	3X
Chest	89 cm - 94 cm (35" - 37")	94 cm - 104 cm (37" - 41")	104 cm - 112 cm (41" - 44")	112 cm - 122 cm (44" - 48")	122 cm - 135 cm (48" - 53")	135 cm - 147 cm (53" - 58")
Sleeve length	81 cm (32")	84 cm (33")	86 cm (34")	89 cm (35")	91 cm (36")	94 cm (37")

ICON EUROPE SIZE CONVERSION CHARTS

MEN'S JACKET CONVERSION CHART

	XS	S	M	L	XL	2X	3X
United Kingdom	36	38	40	42/44	44/46	48	50
Europe	46	48	50	54	56	58	60