



1820-2037



1820-2038

Ti-6 AND T-6 4-STROKE EXHAUST SYSTEMS FOR KAWASAKI KX450/X 24

- Ti-6 Pro was created as a full race system, the Ti-6 Pro is designed to increase performance and help professional racers pass FIM sound regulations
- Ti-6 titanium exhaust system is designed to improve performance and power; constructed of titanium throughout the headpipe, mid pipe and canister; this is the ideal exhaust for any off-road or closed course racer looking for improved performance, durability and a professional look; comes with a removable spark arrestor making it easy to alternate between off-road and closed course riding
- T-6 stainless steel exhaust system offers the same benefits as Ti-6 titanium exhaust system, but the T-6 is constructed of stainless steel and aluminum for increased strength and durability while giving riders a more affordable alternative to titanium; comes with a removable spark arrestor making it easy to alternate between off-road and closed course riding

DESCRIPTION	PART #
T-6 stainless system	1820-2037
T-6 stainless system w/ titanium muffler and carbon end cap	1820-2040 ²

- Machined aluminum muffler brackets for increased strength and durability
- Asymmetrical muffler configuration for increased packing volume
- Equipped with a RC-4 Resonance Chamber for reduced sound output
- Machined mid pipe to headpipe joint for a better, leak-free fit
- TIG precision welding

DESCRIPTION	PART #
Ti-6 w/ carbon end cap	1820-2038
Ti-6 Pro w/ carbon end cap	1820-2039 ¹

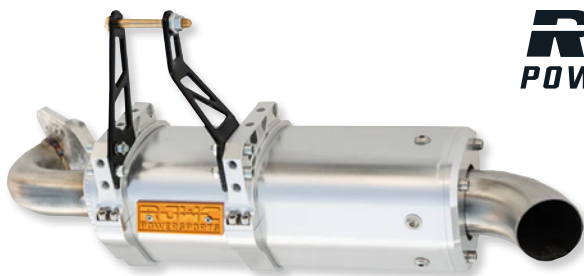
¹ Passes FIM sound regulations. ² Does NOT include removable spark arrestor.

T-6 SLIP-ON SILENCER FOR KAWASAKI KX450/X 24

- T-6 Stainless Slip-On Silencers are designed for a rider looking for an inexpensive, easy-to-install, durable performance silencer that can bolt onto their stock headpipe
- Constructed of stainless steel throughout the mid-pipe and end cap while the canister is constructed of aluminum for increased durability
- Machined aluminum muffler bracket for increased strength and durability
- Asymmetrical muffler configuration for increased packing volume
- Includes engineered rubber mount insert to prevent potential sub-frame cracking
- Removable spark arrestor
- TIG precision welding



DESCRIPTION	PART #
T-6 stainless slip-on w/ removable spark arrestor	1821-2087



SINGLE APX SLIP-ON EXHAUSTS

- Built and assembled in northern Sweden
- All aluminum modular exhaust
- CAD drawn with extruded aluminum cans
- Casted stainless intake flanges and new inner cores
- All aluminum parts are CNC-machined from 6061 billet
- Precision TIG-welded with high-quality filler rod; mandrel-bent tubing

1830-0661



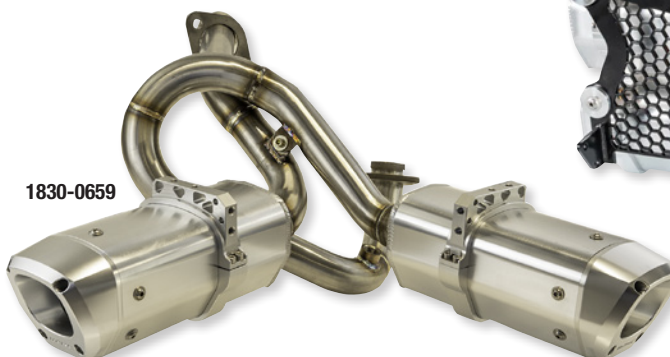
1831-1073

- Great power increase
- Spark arrestor included

NOTE: All exhausts and mufflers are bolt-on and are made to fit stock vehicles; any aftermarket modifications or additions may affect exhaust fit

FITS MODELS	PART #
CFMOTO	
ZForce 800/950 Trail 23-24	1830-0661

FITS MODELS	PART #
TGB	
Blade 1000 16-24	1831-1073



1830-0659



1830-0660

DUAL APX SLIP-ON EXHAUSTS

- Built and assembled in northern Sweden
- All aluminum modular exhaust
- CNC-machined brackets on all critical points
- CAD drawn with extruded aluminum cans
- Casted stainless intake flanges and new inner cores
- Great power increase

- Spark arrestor included

NOTE: All exhausts and mufflers are bolt-on and are made to fit stock vehicles; any aftermarket modifications or additions may affect exhaust fit

FITS MODELS	DESCRIPTION	PART #
CFMOTO		
ZForce 950/1000 Sport 20-24	Split	1830-0659

FITS MODELS	DESCRIPTION	PART #
CFMOTO (CONT)		
ZForce 950/1000 Sport HO 23-24	Split	1830-0659
	Stacked	1830-0660



1832-0106

EXHAUST HEADERS FOR CFMOTO

- Headers fit all RJWC slip-ons
- Headers are made out of 304 stainless steel
- Headers are TIG Welded; thick Mandrel-bent tubing

FITS MODELS	PART #
CForce 500/520/550 17-24	1832-0106¹
CForce 600 (US) 20-24	1832-0106
CForce 625 20-24	1832-0106²

KROSSFLOW EXHAUST END TIP

- Works with any RJWC Krossflow exhaust

DESCRIPTION	PART #
Single tip (order two for dual system)	1832-0107

¹ CForce 520 Touring models requires adapter PART #1832-0095 (sold separately).
² Touring model requires adapter PART #1832-0095 (sold separately).

RJWC POWERSPORTS

BILLET GAS CAP 3.0

- Upgraded version of the 2.0
- Made from high-quality 6061 billet aluminum
- Hard anodized surface for exceptional durability and sustained performance
- Nitrile rubber gasket ensures a tight seal, preventing fuel leaks and maintaining the integrity of your fuel system
- Grippy design facilitates easy removal and installation especially during critical refueling moments



- Perfect match for both stock and modified range

NOTE: This gap cap is not compatible with race fuel. The nitrile rubber gasket is not resistant to toluene and xylene.

FOR CAN-AM OUTLANDER 500/700/700 XMR (G3) 23-24, MAVERICK TRAIL 18-24, AND DEFENDER XMR/HD8/HD10 16-24

DESCRIPTION	PART #	DESCRIPTION	PART #	DESCRIPTION	PART #
Black	0520-4031	Turquoise	0703-0923	Pink	0703-0924

STEERING BAR RISERS

- CNC-machined from a solid billet of aircraft-grade 6061 aluminum with a hard anodized finish
- Compatible with both 22,2 mm (7/8") and 26,8 (1 1/8") handlebars including fatbars
- Adjustability feature allows you to fine-tune your handlebar height
- Raises the handlebar by 55 mm (2 1/2")
- Sold in pairs



DESCRIPTION	PART #	DESCRIPTION	PART #	DESCRIPTION	PART #
Black	0602-1489	Turquoise	0602-1490	Pink	0602-1491

STEERING STEM REINFORCEMENT

- CNC-machined from aircraft-grade 6061 aluminum with a hard anodized finish and a hexagonal solid stainless steel rod
- Fortifies the known weak point in Can-Am ATV steering systems
- Creates a stiffer, more responsive steering feel enhancing your control and overall riding experience
- Compatible with both 22,2 mm (7/8") and 26,8 mm (1 1/8") handlebars including fatbars
- Includes all necessary hardware for installation



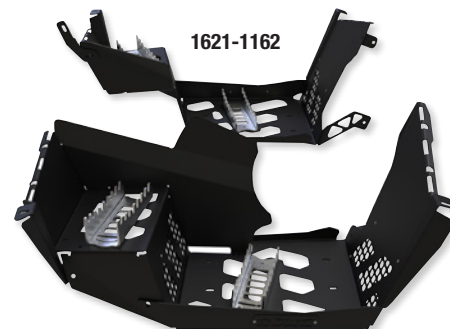
FITS MODEL	BLACK	TURQUOISE	PINK	FITS MODEL	BLACK	TURQUOISE	PINK
CAN-AM				CAN-AM (CONT)			
Outlander 400/700/700 XMR 23-24	0602-1492	0602-1493	0602-1494	Outlander 570/L 15-24	0602-1492	0602-1493	0602-1494
Maverick X3 Turbo/ Renegade 850 17-24	0602-1492	0602-1493	0602-1494	Outlander 500/650/650Max/1000/ 1000Max/1000XMR/1000XXC 12-24	0602-1492	0602-1493	0602-1494
Outlander 650XMR/850/ 850 Max/850XMR 16-24	0602-1492	0602-1493	0602-1494	Renegade 500/800/1000 12-24	0602-1492	0602-1493	0602-1494
Renegade 570/570XMR/850XMR/ 1000XMR 16-24	0602-1492	0602-1493	0602-1494				

FLOORBOARDS

- Made from high-quality 3 mm thick 6061 aluminum
- High-durability build, superior grip and adjustable footpegs offer unmatched control
- Smart mesh design ensures efficient drainage
- Fits with all Can-Am fender flares

- Guaranteed fitment with tires up to 79 cm (31")
- Includes all necessary hardware for installation

NOTE: An 81 cm tire (32") can have a different size diameter between brands. RJWC recommends using the diameter of the tire for fitment.



FITS MODEL	PART #	FITS MODEL	PART #	FITS MODEL	PART #
CAN-AM		CAN-AM (CONT)		CAN-AM (CONT)	
Outlander 650 Max (G2) 12-24	1621-1162	Outlander 1000 Max/XMR (G2) 12-24	1621-1162	Outlander 850 (G2) 16-24	1621-1163
Outlander 650 XMR (G2) 16-24	1621-1162	Outlander 570 (G2) 15-24	1621-1163	Outlander 1000/XXC (G2) 12-24	1621-1163
Outlander 850 Max/XMR (G2) 16-24	1621-1162	Outlander 650 (G2) 12-24	1621-1163		



NEUTRINO 2 LED HEADLIGHTS

- All new construction and housing with detachable halos (white halo ring included in kit)
- E-mark for both high and low beams
- Interchangeable HALO-rings available, allowing you to customize the color (rings sold separately)
- 12V; 30W low beam and 40W high beam



- Water sealed connectors
- Impact-resistant lens

NOTE: Does not fit L/G2L chassis

NOTE: Do not use a high-pressure washer directly on the lights which may cause unwanted water ingress



FITS MODEL	PART #
CAN-AM	
Maverick X3 Turbo 17-22	2001-2742
Outlander 570 (G2) 15-22	2001-2742
Outlander 650 XMR (G2) 16-22	2001-2742
Outlander 650/Max (G2) 12-22	2001-2742
Outlander 850/Max/XMR (G2) 16-22	2001-2742
Outlander 1000/Max/XMR/XXC (G2) 12-22	2001-2742

FITS MODEL	PART #
CAN-AM (CONT)	
Renegade 500 12-22	2001-2743
Renegade 570 (G2)/570 XMR 16-22	2001-2743
Renegade 800 (G2) 16-22	2001-2743
Renegade 850 (G2) 17-22	2001-2743
Renegade 850 XMR (G2) 16-22	2001-2743



BRAKE RESERVOIR LIDS

- CNC-machined from aircraft-grade 6061 aluminum with a hard anodized surface

- Direct replacement for OEM cover
- Replaces OEM #219800096

DESCRIPTION	PART #
CAN-AM	
Black	0611-0212

DESCRIPTION	PART #
CAN-AM (CONT)	
Turquoise	0611-0213

DESCRIPTION	PART #
CAN-AM (CONT)	
Pink	0611-0214

CLUTCH KITS

- Each kit is a comprehensive pre-tuned and versatile setup
- Counteracts the power loss and sluggishness commonly experienced when using larger tires
- Enhances low-end power and torque to make sure you get the needed traction when deep in mud
- Significantly enhances acceleration, particularly at low speeds and midrange

- Provides a noticeable improvement in overall responsiveness
- Ensures a smooth throttle response with quicker backshift
- Effectively reduces belt slippage and minimizes heat generation, safeguarding the longevity of the clutch system



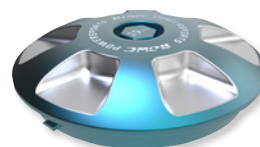
DESCRIPTION	PART #
CFMOTO	
ZForce 950/1000 Sport 20-24	1130-0842

DESCRIPTION	PART #
CFMOTO (CONT)	
ZForce 950/1000 Sport HO 23-24	1130-0842

DESCRIPTION	PART #
CFMOTO (CONT)	
UForce 1000 21-24	1130-0841

BILLET AIRBOX LIDS

- Seals better than factory plastic airbox lid
- Gasket seal is made out of a special silicone rubber that meets the high standards of durability
- CNC-machined from 6061 aluminum billet block
- Works with factory air filters and RJCW Powersports air filter



DESCRIPTION	TURQUOISE	PINK
CAN-AM		
Outlander 500 (G2L) 12-24	1011-4902	1011-4903
Renegade 500 (G2) 12-24	1011-4902	1011-4903
Outlander 570L (G2L/XMR) 15-24	1011-4902	1011-4903
Renegade 570 (G2) 16-24	1011-4902	1011-4903
Renegade 570XMR 16-24	1011-4902	1011-4903
Outlander 650/Max (G2) 12-24	1011-4902	1011-4903
Outlander 650XMR (G2) 16-24	1011-4902	1011-4903

DESCRIPTION	TURQUOISE	PINK
CAN-AM (CONT)		
Renegade 800 (G2) 12-24	1011-4902	1011-4903
Maverick X3 Turbo/Renegade 850 (G2) 17-24	1011-4902	1011-4903
Outlander 850/Max/XMR (G2) 16-24	1011-4902	1011-4903
Renegade 850XMR (G2) 16-24	1011-4902	1011-4903
Outlander 1000/Max/XMR/XXC (G2) 12-24	1011-4902	1011-4903
Renegade 1000XMR (G2) 16-24	1011-4902	1011-4903
Renegade 1000 (G2) 12-24	1011-4902	1011-4903



1861-1730

HEAT SHIELDS

- If you own a 4-stroke then you owe it to yourself to provide the added protection of an E Line Accessories carbon fiber exhaust shield for your precious header
- The head pipe is susceptible to dings and dents as it gets hot so it is critical to protect it
- With your riding gear so close to a heat source, it can be burnt quickly
- Before you sacrifice another pair of pants or boots, equip your bike with a carbon fiber exhaust heat shield

FITS MODEL	PART #	FITS MODEL	PART #
GASGAS		GASGAS (CONT)	
MC 250F 24	1861-1730	EX 350F 21-23	1861-1729
MC 350F 24	1861-1729	HUSQVARNA	
EX 250F 24	1861-1730	FC/FX 250 24	1861-1730

FITS MODEL	PART #	FITS MODEL	PART #
HUSQVARNA (CONT)		KTM	
FC 350 23-24	1861-1729	SX-F/XC-F 250 23-24	1861-1730
FE 350 24	1861-1729	SX-F/XC-F 350 23-24	1861-1729
FX 350 24	1861-1729	EXC-F 350 23-24	1861-1729

PIPE GUARD BY E LINE

- Moose Racing pipe guards offer the most protection, style and durability on the market
- Custom molded to fit perfectly every time
- Antiballistic composite material, fiberglass, and high temp resins yield an exceptional guard; 8 times stronger, 2 times stiffer, yet 1.5 times lighter than aluminum
- Our pipe guards distribute impacts over a large area; aluminum guards cannot duplicate this effect

FITS MODEL	STOCK EXHAUST PART #
GASGAS	
MC 125 24	1861-1731
HUSQVARNA	
TC 125 23-24	1861-1731
TE 150 24	1861-1731



FITS MODEL	STOCK EXHAUST PART #
KTM	
SX 125 23-24	1861-1731
XC 125 23-24	1861-1731
XC-W 150 24	1861-1731

CARBON FIBER SKID PLATES BY ELINE

- Thick composite plates with many advantages over aluminum
- The use of antiballistic composite material provides a longer fatigue life and greater tensile strength than aluminum
- Composite plates are molded to the exact shape desired, making for a closer fit and a more protective plate
- Composite plates absorb vibration and do not amplify sounds like aluminum plates do
- When hit hard, aluminum permanently deforms, bending frame tubes and slicing into water pumps

FITS MODEL	PART #	FITS MODEL	PART #
GASGAS		GASGAS (CONT)	
MC 250 24	0506-2158	EX 250F 24	0506-2158
MC 250F 24	0506-2158	HUSQVARNA	
EC 250 24	0506-2158	TC 250 23-24	0506-2158
EC 300 24	0506-2158	TE 250/300 24	0506-2158



- Composite plates will bounce back from hard hits and look great long after aluminum plates give up
- Skid plates protect the side engine cases and the water pump in addition to the frame and the center case
- Designed with a high front to keep mud from building up on the engine
- Mounting hardware included

FITS MODEL	PART #
KTM	
SX/XC 250 23-24	0506-2158



1620-2521

TI FOOTPEGS

- Made from aerospace-grade titanium Grade 5 Ti-6AL-4V with chamber-controlled welding
- 57mm cleated platform provides ample surface area and support for the most aggressive riding
- Super lightweight coming in under 300 grams per set
- Inner cleated webbing design provides added traction surface and strength to the footpegs
- Beveled front and rear edges prevent pegs from hanging up in deep ruts

FITS MODEL	PART #	FITS MODEL	PART #	FITS MODEL	PART #	FITS MODEL	PART #
GASGAS		HUSQVARNA		KTM (CONT)		KTM (CONT)	
MC 125/250 24	1620-2521	FC 250/350/450 23-24	1620-2522	SX 125 23-24	1620-2522	XC-F 450 23-24	1620-2522
MC 250F 24	1620-2521	TC 125/250 23-24	1620-2522	SX 250 23-24	1620-2522	XCF-W 450 24	1620-2522
MC 350F 24	1620-2521	FE 250/350/501 23-24	1620-2522	EXC-F 350 24	1620-2522	XW-F 350 24	1620-2522
MC 450F 24	1620-2521	TE 250i - TE 300i 23-24	1620-2522	EXC-F 500 24	1620-2522	XW-F 500 24	1620-2522
EC 300 24	1620-2521	TX 300i 23-24	1620-2522	XC 250 23-24	1620-2522	YAMAHA	
EX 250 24	1620-2521	KTM		XC 300 23-24	1620-2522	YZ250F 23-24	1620-2521
EX 250F 24	1620-2521	SX-F 250 23-24	1620-2522	XC-F 250 23-24	1620-2522	YZ450F 23-24	1620-2521
EX 350F 24	1620-2521	SX-F 350 23-24	1620-2522	XC-F 350 23-24	1620-2522		
EX 450F 24	1620-2521	SX-F 450 23-24	1620-2522	XC-W 300 Hard Enduro 24	1620-2522		

REPLACEMENT CYLINDER FOR POLARIS

- Replace your damaged or worn OEM cylinder
- Made from cast aluminum; nickel silicon carbide plated
- Precision-machined and honed to OEM stock bore sizes
- Extremely durable low-friction bore surface allows for greater heat dissipation
- Stock OEM appearance



FITS MODEL	PART #	FITS MODEL	PART #	FITS MODEL	PART #
ACE 570 15-19	0931-1161	Ranger 570 XP 16	0931-1161	Sportsman 570 EPS UTE 16	0931-1161
ACE 570 HD 15-19	0931-1161	Ranger 570, Euro 15-16	0931-1161	Sportsman 570 EPS ZUG 16-18	0931-1161
ACE 570 Euro 15-18	0931-1161	Ranger 570, INTL 14	0931-1161	Sportsman 570 EPS, Euro 17-18	0931-1161
ACE 570 MD 16	0931-1161	Ranger 570-6 Full Size Crew 16-23	0931-1161	Sportsman 570 EPS, MD 15	0931-1161
Ranger 570 4x4 14-21	0931-1161	RZR 570 12-20	0931-1161	Sportsman 570 HD 14-19	0931-1161
Ranger 570 4x4 Crew 14-21	0931-1161	RZR 570 EPS 13/15-20	0931-1161	Sportsman 570 Hunt Edition 21-22	0931-1161
Ranger 570 4x4 Crew EPS 14-21	0931-1161	RZR 570 EPS Trail 15-16	0931-1161	Sportsman 570 Premium 21-23	0931-1161
Ranger 570 4x4 Crew MidSize 15-16	0931-1161	RZR 570 Trail 21-22	0931-1161	Sportsman 570 Ride Command LE 22	0931-1161
Ranger 570 4x4 EPS 17-19	0931-1161	RZR 570 Trail Premium 21	0931-1161	Sportsman 570 SP 15-20	0931-1161
Ranger 570 4x4 EPS HDPE 17	0931-1161	RZR 570, Euro 15-18	0931-1161	Sportsman 570 SP EPS 15-17	0931-1161
Ranger 570 4x4 EPS HDPS 18	0931-1161	RZR 570, INTL 12-14	0931-1161	Sportsman 570 SP Tractor 18	0931-1161
Ranger 570 4x4 Full Size 15-23	0931-1161	Sportsman 450 4x4 HO 16	0931-1161	Sportsman 570 SP ZUG EPS 18	0931-1161
Ranger 570 4x4 Full Size Crew 15-19	0931-1161	Sportsman 450 4x4 Tractor 16	0931-1161	Sportsman 570 SP, MD 15-16	0931-1161
Ranger 570 4x4 Full Size EPS 15	0931-1161	Sportsman 450 EFI, MD 16	0931-1161	Sportsman 570 Tractor 16-19	0931-1161
Ranger 570 4x4, Euro 16	0931-1161	Sportsman 450 EPS ZUG 16	0931-1161	Sportsman 570 Tractor EPS 16-18	0931-1161
Ranger 570 4x4, INTL 14-15/17-18	0931-1161	Sportsman 450 HO 16	0931-1161	Sportsman 570 Tractor EPS SP 15-16/18-19	0931-1161
Ranger 570 Crew Premium 21	0931-1161	Sportsman 450 HO 2x4, MD 16	0931-1161	Sportsman 570 Trail 21-23	0931-1161
Ranger 570 Crew SP 22-23	0931-1161	Sportsman 570 14-23	0931-1161	Sportsman 570 Ultimate Trail LE 21	0931-1161
Ranger 570 Crew SP NorthStar Edition 22	0931-1161	Sportsman 570 6x6 17-23	0931-1161	Sportsman 570 UTE 17-19	0931-1161
Ranger 570 Crew SP Premium 22-23	0931-1161	Sportsman 570 6x6 Tractor 17-18	0931-1161	Sportsman 570 UTE HD 15-17	0931-1161
Ranger 570 EPS 14-19	0931-1161	Sportsman 570 6x6, Euro 21	0931-1161	Sportsman 570 UTE HD EPS 14	0931-1161
Ranger 570 HD 19	0931-1161	Sportsman 570 EFI EPS Forest Quad 15	0931-1161	Sportsman 570 UTE Tractor 16	0931-1161
Ranger 570 Premium 21	0931-1161	Sportsman 570 EFI SP EPS, MD 17	0931-1161	Sportsman 570 UTE, MD 16	0931-1161
Ranger 570 SP 22-23	0931-1161	Sportsman 570 EFI Touring, INTL 14	0931-1161	Sportsman 570 Utility 21	0931-1161
Ranger 570 SP NorthStar Edition 22	0931-1161	Sportsman 570 EFI X2 EPS 15-16	0931-1161	Sportsman 570 Utility EPS 21-22	0931-1161
Ranger 570 SP Premium 22-23	0931-1161	Sportsman 570 EPS 14-16/22-23	0931-1161	Sportsman 570 Utility EPS HD 22	0931-1161

REPLACEMENT CYLINDER continued on next page



REPLACEMENT CYLINDER (CONT)

FITS MODEL	PART #
Sportsman 570 Utility EPS HD LE 21	0931-1161
Sportsman 570 X2 EPS 15-21	0931-1161
Sportsman 570 X2 EPS Tractor 17-19	0931-1161
Sportsman 570 X2 EPS, Euro 15/18	0931-1161
Sportsman 570 X2 EPS, MD 17	0931-1161
Sportsman 570 ZUG 17	0931-1161
Sportsman 570, Euro 17-18	0931-1161
Sportsman 570, MD 15-17	0931-1161

FITS MODEL	PART #
Sportsman Touring 570 14-23	0931-1161
Sportsman Touring 570 EPS 15-19/21-23	0931-1161
Sportsman Touring 570 EPS EFI, MD 17	0931-1161
Sportsman Touring 570 EPS Tractor 15-19/21	0931-1161
Sportsman Touring 570 EPS Tractor EFI 16	0931-1161
Sportsman Touring 570 EPS Tractor SP 18-19	0931-1161

FITS MODEL	PART #
Sportsman Touring 570 EPS, Euro 18	0931-1161
Sportsman Touring 570 EPS, MD 15-17	0931-1161
Sportsman Touring 570 Premium 20-23	0931-1161
Sportsman Touring 570 Premium Tractor 21	0931-1161
Sportsman Touring 570 SP 15-20	0931-1161
Sportsman Touring 570, Euro 15/18	0931-1161
Sportsman Touring 570, INTL 14	0931-1161
Sportsman Touring 570, MD 15	0931-1161

STAINLESS STEEL BRAIDED BRAKE LINES

- Swivel union ends are the secret to easier fitting, and ensure a kink- and stress-free installation
- Venhill Engineering in the UK makes Moose Racing Stainless Steel Brake lines to the highest specifications
- Each line is made from top-quality PTFE-coated hose, wrapped with British-made stainless steel and PVC-coated for protection and great looks
- Rubber protection boots and extra rigid tubing are used to protect vulnerable areas from heat and impact and to prevent hose flex under compression



- Each line is designed to withstand a minimum of 14,000 psi
- Installing our stainless lines gives a large performance increase by significantly reducing expansion under pressure, and absorption of water when compared to stock rubber hoses

FITS MODEL	FRONT PART #	REAR PART #
FANTIC		
XX 125 22-24	-	1741-6421
XX 250 22-24	-	1741-6421
XXF 250 22-24	1741-6415	-
XXF 450 22	1741-6415	-
XE 125 23-24	-	1741-6421
XEF 250 21-24	1741-6415	-
XEF 450 22-24	1741-6415	-
XEF 450 Rally 24	1741-6415	-
GASGAS		
MC 50 21-23	1741-6487	1741-6496
MC 65 21-22	1741-6486	1741-6498
MC 65 23-24	1741-6491	1741-6501
MC 85 (Big Wheel) 21-24	1741-6484	1741-6499
MC 85 (Small Wheel) 21-24	1741-6484	1741-6499
MC 125 03-04	-	1741-6406
MC 125 05-09	-	1741-6406
MC 125 21-23	-	1741-6494
MC 125 24	-	1741-6450
MC 250 03-04	-	1741-6406
MC 250 05-10	-	1741-6406
MC 250 22-23	-	1741-6494
MC 250 24	-	1741-6450
MC 250F 21-23	-	1741-6494
MC 250F 24	-	1741-6450
MC 350F 22-23	-	1741-6494
MC 350F 24	-	1741-6450

FITS MODEL	FRONT PART #	REAR PART #
GASGAS (CONT)		
MC 450F 21-22	-	1741-6494
MC 450F 23	-	1741-6494
MC 450F 24	-	1741-6450
EC 125 03-11	-	1741-6406
EC 125 Racing 13-15	-	1741-6406
EC 200 03-19	-	1741-6406
EC 200 Racing 13-15	-	1741-6406
EC 250 00-19	-	1741-6406
EC 250 21-24	1741-6440	1741-6450
EC 250 250 Racing 12-18	-	1741-6406
EC 250F 10-15	-	1741-6406
EC 250F 21-24	1741-6440	1741-6450
EC 250F Racing 13-15	-	1741-6406
EC 300 00-19	-	1741-6406
EC 300 21-24	1741-6440	1741-6450
EC 300 F 13-15	-	1741-6406
EC 300 F Racing 13-14	-	1741-6406
EC 300 Racing 12-18	-	1741-6406
EC 350F 21-24	1741-6440	1741-6450
EC 450 09	-	1741-6406
EC 450F 14-15	-	1741-6406
EC 450F 24	1741-6440	1741-6450
EC 450F Racing 12-14	-	1741-6406
EC 450FSR 09	-	1741-6406
EC 500 F 24	1741-6440	1741-6450
EC 515 09	-	1741-6406

FITS MODEL	FRONT PART #	REAR PART #
GASGAS (CONT)		
Enduro GP 250 18	-	1741-6406
Enduro GP 300 18	-	1741-6406
ES 350 24	1741-6440	1741-6450
ES 500 24	1741-6440	1741-6450
EW 500F 24	1741-6440	1741-6450
EX 250 22-23	-	1741-6494
EX 250 24	-	1741-6450
EX 250F 21-23	-	1741-6494
EX 250F 24	-	1741-6450
EX 300 21-23	-	1741-6494
EX 300 24	-	1741-6450
EX 350F 21-23	-	1741-6494
EX 350F 24	-	1741-6450
EX 450F 21-22	-	1741-6494
EX 450F 23	-	1741-6494
EX 450F 24	-	1741-6450
FSE 400 03-05	-	1741-6406
FSE 450 03-08	-	1741-6406
SM 125 03-08	-	1741-6406
SM 450 09	-	1741-6406
SM 515 09	-	1741-6406
TXT 80 Pro Racing 15	-	1741-6407
TXT Rookie 05	-	1741-6407
TXT 125 Pro 11-14	1741-6405	1741-6407
TXT 125 Racing (Dell'Orto carburetor) 11	-	1741-6407

STAINLESS STEEL BRAIDED BRAKE LINES continued on next page



STAINLESS STEEL BRAIDED BRAKE LINES (CONT)

FITS MODEL	FRONT PART #	REAR PART #
GASGAS (CONT)		
TXT 125 Racing (Dell'Orto carburetor) 20-22	1741-6405	1741-6408
TXT 125 Racing (Keihin carburetor) 11	-	1741-6407
TXT 125 Racing (Keihin carburetor) 13-15	1741-6405	1741-6407
TXT 125 Racing (Keihin carburetor) 17-18	1741-6405	-
TXT 125 Racing (Keihin carburetor) 19-22	1741-6405	1741-6408
TXT 125-300 Raga Replica 11-12	-	1741-6407
TXT GP 125 17-18	1741-6405	-
TXT 250 Pro 03-14	-	1741-6407
TXT 250 Racing (Dell'Orto carburetor) 20-22	1741-6405	1741-6408
TXT 250 Racing (Keihin carburetor) 13	-	1741-6407
TXT 250 Racing (Keihin carburetor) 14-15	1741-6405	1741-6407
TXT 250 Racing (Keihin carburetor) 17-18	1741-6405	-
TXT 250 Racing (Keihin carburetor) 19-22	1741-6405	1741-6408
TXT 280 Pro 11-14	-	1741-6407
TXT 280 Racing (Dell'Orto carburetor) 20-22	1741-6405	1741-6408
TXT 280 Racing (Keihin carburetor) 11	-	1741-6407
TXT 280 Racing (Keihin carburetor) 13	-	1741-6407
TXT 280 Racing (Keihin carburetor) 14-15	1741-6405	1741-6407
TXT 280 Racing (Keihin carburetor) 17-18	1741-6405	-
TXT 280 Racing (Keihin carburetor) 19-22	1741-6405	1741-6408
TXT 300 Pro 11-14	-	1741-6407
TXT 300 Racing (Dell'Orto carburetor) 20-22	1741-6405	1741-6408
TXT 300 Racing (Keihin carburetor) 11	-	1741-6407
TXT 300 Racing (Keihin carburetor) 13	-	1741-6407
TXT 300 Racing (Keihin carburetor) 14-15	1741-6405	1741-6407
TXT 300 Racing (Keihin carburetor) 17-18	1741-6405	-
TXT 300 Racing (Keihin carburetor) 19-22	1741-6405	1741-6408
XC 200 18-19	-	1741-6406
XC 250 18-19	-	1741-6406
XC 300 18-19	-	1741-6406
HONDA		
CRF 150 F 03-17	1741-6464	-
CRF 150 R 18-24	-	1741-6478
CRF 150 RB 18-24	-	1741-6479
CRF 250F 19-24	1741-6468	1741-6481

FITS MODEL	FRONT PART #	REAR PART #
HONDA (CONT)		
CRF 250 L 13-20	1741-6463	1741-6473
CRF 250 M 14-15	-	1741-6473
CRF 250 R 08	-	1741-6470
CRF 250 R 09	1741-6461	1741-6470
CRF 250 R 10-13	1741-6461	1741-6471
CRF 250 R 14	1741-6461	1741-6472
CRF 250 R 15	1741-6462	1741-6472
CRF 250 R 16-17	1741-6458	1741-6472
CRF 250 R 18	1741-6465	1741-6475
CRF 250 R 19	1741-6460	1741-6475
CRF 250 R 20-24	1741-6460	1741-6476
CRF 250 RL (Non-ABS) 17-20	1741-6467	1741-6473
CRF 250 RX 19	1741-6460	1741-6475
CRF 250 RX 20-24	1741-6460	1741-6476
CRF 250 X 04-06	1741-6457	-
CRF 250 X 07-17	1741-6459	-
CRF 300 L 21-22	1741-6466	1741-6480
CRF 300 LR 21-22	1741-6467	1741-6480
CRF 450 L 19-20	1741-6456	1741-6477
CRF 450 R 09-13	1741-6461	1741-6471
CRF 450 R 14	1741-6461	1741-6472
CRF 450 R 15	1741-6462	1741-6472
CRF 450 R 16	1741-6458	1741-6472
CRF 450 R 17-18	1741-6465	1741-6475
CRF 450 R 19-22	1741-6460	1741-6476
CRF 450 R 23-24	1741-6460	-
CRF 450 RL 21-24	1741-6456	1741-6477
CRF 450 RWE 19-22	1741-6460	1741-6476
CRF 450 RWE 23-24	1741-6460	-
CRF 450 RX 17-18	1741-6465	1741-6475
CRF 450 RX 19-22	1741-6460	1741-6476
CRF 450 RX 23-24	1741-6460	-
CRF 450 X 05-08	1741-6457	-
CRF 450 X 09-17	1741-6459	-
CRF 450 X 19-24	1741-6456	1741-6477
XR 650 L 93-13	-	1741-6474
XR 650 R 00-07	-	1741-6469
HUSABERG		
FE 250 13-14	-	1741-6497
FE 250 15	-	-
FE 350 13-14	-	1741-6497
FE 390 10-12	-	1741-6497
FE 450 04-08	-	1741-6497
FE 450 09-12	-	1741-6497
FE 450 13	-	1741-6497
FE 450 14	-	1741-6497
FE 501 13	-	1741-6497
FE 501 14	-	1741-6497

FITS MODEL	FRONT PART #	REAR PART #
HUSABERG (CONT)		
FE 570 09-12	-	1741-6497
TE 125 12	-	1741-6497
TE 125 13	-	1741-6497
TE 250 11-14	-	1741-6497
TE 300 11-14	-	1741-6497
FX 450 10-12	-	1741-6497
HUSQVARNA		
FC 250 14-15	-	1741-6494
FC 250 16-17	-	1741-6494
FC 250 18	1741-6434	1741-6451
FC 250 19-20	-	1741-6494
FC 250 21	-	1741-6494
FC 250 (Brembo brakes) 22-24	-	1741-6494
FC 350 14-15	-	1741-6494
FC 350 16-17	-	1741-6494
FC 350 18	1741-6434	1741-6451
FC 350 19-20	-	1741-6494
FC 350 21	-	1741-6494
FC 350 (Brembo brakes) 22-24	-	1741-6494
FC 450 (Brembo brakes) 14-15	-	1741-6494
FC 450 (Brembo brakes) 16-17	-	1741-6494
FC 450 (Brembo brakes) 18-21	-	1741-6494
FC 450 (Brembo brakes) 22	-	1741-6494
FC 450 (Brembo brakes) 23-24	-	1741-6494
FC 450 (Magura brakes) 18	1741-6434	1741-6451
TC 50 17-23	1741-6487	1741-6496
TC 50 Mini 18-23	1741-6489	1741-6500
TC 65 17-22	1741-6486	1741-6498
TC 65 23	1741-6491	1741-6501
TC 85 (17 14) (Small Wheel) 14-17	1741-6485	1741-6492
TC 85 (17 14) (Small Wheel) 18-20	1741-6482	1741-6492
TC 85 (17 14) (Small Wheel) 21-24	1741-6484	1741-6499
TC 85 (19 16) (Big Wheel) 14-17	1741-6485	1741-6492
TC 85 (19 16) (Big Wheel) 18-20	1741-6482	1741-6492
TC 85 (19 16) (Big Wheel) 21-24	1741-6484	1741-6499
TC 125 14-15	-	1741-6494
TC 125 16-17	-	1741-6494
TC 125 18	1741-6434	1741-6451
TC 125 19-20	-	1741-6494
TC 125 21	-	1741-6494

STAINLESS STEEL BRAIDED BRAKE LINES continued on next page



STAINLESS STEEL BRAIDED BRAKE LINES (CONT)

FITS MODEL	FRONT PART #	REAR PART #
HUSQVARNA (CONT)		
TC 125 22-24	-	1741-6494
TC 250 08-11	1741-6437	1741-6447
TC 250 12	1741-6436	1741-6447
TC 250 13	1741-6437	1741-6447
TC 250 14-16	-	1741-6494
TC 250 17	-	1741-6494
TC 250 18	1741-6434	1741-6451
TC 250 19-21	-	1741-6494
TC 250 22-24	-	1741-6494
TC 449 11-13	1741-6437	1741-6449
TC 450 04	-	1741-6445
TC 450 06-07	1741-6437	-
TC 450 08-10	1741-6437	1741-6447
TC 450 11-13	1741-6437	1741-6449
TC 510 09-10	1741-6437	1741-6447
TC 511 11-13	1741-6439	1741-6449
EE 5 20-23	1741-6487	1741-6496
FE 250 14-16	-	1741-6494
FE 250 17	1741-6488	1741-6494
FE 250 18-21	1741-6438	1741-6451
FE 250 22-24	1741-6440	1741-6450
FE 350 14-16	-	1741-6494
FE 350 17	1741-6488	1741-6494
FE 350 18-21	1741-6438	1741-6451
FE 350 22.24	1741-6440	1741-6450
FE 350 Pro 24	1741-6488	1741-6494
FE 350 S 15-16	-	1741-6494
FE 350 S 20-21	1741-6438	1741-6451
FE 350 S 22-24	1741-6440	1741-6450
FE 450 14-16	-	1741-6494
FE 450 17	1741-6488	1741-6494
FE 450 18-21	1741-6438	1741-6451
FE 450 22-23	1741-6440	1741-6450
FE 450 24	1741-6440	1741-6450
FE 501 14-16	-	1741-6494
FE 501 17	1741-6488	1741-6494
FE 501 18-21	1741-6438	1741-6451
FE 501 22-23	1741-6440	1741-6450
FE 501 24	1741-6440	1741-6450
FE 501 S 15-16	-	1741-6494
FE 501 S 20-21	1741-6438	1741-6451
FE 501 S 22-23	1741-6440	1741-6450
FE 501 S 24	1741-6440	1741-6450
TE 125 14-16	-	1741-6494
TE 150 17	1741-6488	1741-6494
TE 150 18-21	1741-6438	1741-6451
TE 150 22-24	1741-6440	1741-6450
TE 250 04-05	1741-6435	1741-6445

FITS MODEL	FRONT PART #	REAR PART #
HUSQVARNA (CONT)		
TE 250 08-12	1741-6436	1741-6447
TE 250 13	1741-6437	1741-6447
TE 250 14-16	-	1741-6494
TE 250 17	1741-6488	1741-6494
TE 250 18-21	1741-6438	1741-6451
TE 250 22-24	1741-6440	1741-6450
TE 300 14-16	-	1741-6494
TE 300 17	1741-6488	1741-6494
TE 300 18	1741-6438	1741-6451
TE 300 19-21	1741-6438	1741-6451
TE 300 22-24	1741-6440	1741-6450
TE 300 Pro 24	1741-6488	1741-6494
TE 310 09-12	1741-6436	1741-6447
TE 310 13	1741-6437	1741-6447
TE 410 00	1741-6432	-
TE 410 95	1741-6429	-
TE 410 96-99	1741-6430	-
TE 449 11-13	1741-6439	1741-6449
TE 450 04	-	1741-6445
TE 450 05	1741-6435	1741-6445
TE 450 06-07	1741-6436	-
TE 450 08-10	1741-6436	1741-6447
TE 450 11-13	1741-6439	1741-6449
TE 510 04-05	1741-6435	1741-6445
TE 510 06-07	1741-6436	-
TE 510 08-10	1741-6436	1741-6447
TE 511 11-12	1741-6439	1741-6449
TE 511 13	1741-6437	1741-6449
TE 610E 03-05	-	1741-6444
TE 610E 99-02	-	1741-6444
FX 350 17	-	1741-6494
FX 350 18	1741-6434	1741-6451
FX 350 19-20	1741-6434	1741-6451
FX 350 21	1741-6434	1741-6451
FX 350 22-24	-	1741-6494
FX 450 17	-	1741-6494
FX 450 18-21	1741-6434	1741-6451
FX 450 (Brembo brakes) 22	-	1741-6494
FX 450 (Brembo brakes) 23-24	-	1741-6494
TX 300 17	-	1741-6494
TX 300 18-21	1741-6434	1741-6451
TX 300 22	-	1741-6494
TX 300 23-24	-	1741-6494
FS 450 15	1741-6490	1741-6494
FS 450 16-17	1741-6490	1741-6494
FS 450 18-21	1741-6490	1741-6494
FS 450 22	1741-6490	1741-6494

FITS MODEL	FRONT PART #	REAR PART #
HUSQVARNA (CONT)		
FS 450 23-24	1741-6490	1741-6494
CR 125 00	-	1741-6442
CR 125 09-13	1741-6437	1741-6448
CR 125 92-95	-	1741-6441
CR 125 96-99	-	1741-6441
CR 250 00	-	1741-6441
CR 250 92-95	-	1741-6441
CR 250 96-99	-	1741-6441
SM 125S 05-13	1741-6432	1741-6442
SM 450 R 05	-	1741-6445
SM 510 R 05	-	1741-6445
SM 510 R 08-09	-	1741-6447
SM 610 IE 06-09	1741-6432	1741-6445
TXC 250 10-11	1741-6437	1741-6447
TXC 250 12	1741-6436	1741-6447
TXC 250 13	1741-6437	1741-6447
TXC 310 12	1741-6436	1741-6447
TXC 310 13	1741-6437	1741-6447
TXC 510 08-09	1741-6437	1741-6447
WR 125 02-05	1741-6433	1741-6443
WR 125 09-12	1741-6436	1741-6448
WR 125 98-01	-	1741-6443
WR 250 06-12	-	1741-6446
WR 300 09-12	-	1741-6446
WR 360 92-95	1741-6429	-
WR 360 96-98	1741-6430	-
WRE 125 05-06	1741-6432	1741-6442
WRE 125 07-10	1741-6432	1741-6442
WRE 125 11	-	1741-6442
KAWASAKI		
KXF 250/450 06-11	-	1741-6495
KTM		
SX 50 06-23	1741-6487	1741-6496
SX 50 Mini 08	1741-6489	-
SX 50 Mini 09-23	1741-6489	1741-6500
SX 50 Mini Pro Junior LC 02-05	1741-6489	-
SX 50 Mini Pro Senior LC 02-03	1741-6487	-
SX 50 Mini Pro Senior LC 04-05	1741-6487	1741-6496
SX 65 02-03	1741-6483	-
SX 65 04-05	1741-6483	1741-6493
SX 65 06-08	1741-6486	1741-6493
SX 65 09-22	1741-6486	1741-6498
SX 65 23-24	1741-6491	1741-6501
SX 85 03-12	-	1741-6492
SX 85 (17 14) (Small Wheel) 13-17	1741-6485	1741-6492

STAINLESS STEEL BRAIDED BRAKE LINES continued on next page



STAINLESS STEEL BRAIDED BRAKE LINES (CONT)

FITS MODEL	FRONT PART #	REAR PART #
KTM (CONT)		
SX 85 (17 14) (Small Wheel) 18-20	1741-6482	1741-6492
SX 85 (17 14) (Small Wheel) 21-24	1741-6484	1741-6499
SX 85 (19 16) (Big Wheel) 13-17	1741-6485	1741-6492
SX 85 (19 16) (Big Wheel) 18-20	1741-6482	1741-6492
SX 85 (19 16) (Big Wheel) 21-24	1741-6484	1741-6499
SX 105 04-05	-	1741-6497
SX 125 04-11	-	1741-6497
SX 125 12-24	-	1741-6494
SX 144 08	-	1741-6497
SX 150 09-12	-	1741-6497
SX 150 13-22	-	1741-6494
SX 200 04	-	1741-6497
SX 250 03-05	-	1741-6497
SX 250 06-12	-	1741-6497
SX 250 13-15	-	1741-6494
SX 250 16	-	1741-6497
SX 250 17-24	-	1741-6494
SX 450 03-06	-	1741-6497
SX-E 5 20-23	1741-6487	1741-6496
SX-F 250 05-10	-	1741-6497
SX-F 250 11-24	-	1741-6494
SX-F 350 11-23	-	1741-6494
SX-F 450 07-10	-	1741-6497
SX-F 450 11-23	-	1741-6494
SX-F 505 07-08	-	1741-6497
SXS-F 250 07-08	-	1741-6497
SXS-F 450 07-08	-	1741-6497
EXC 125 04-05	-	1741-6497
EXC 125 06-16	-	1741-6497
EXC 150 20-23	1741-6488	1741-6497
EXC 150 24	1741-6488	1741-6494
EXC 200 04-16	-	1741-6497
EXC 250 04-05	-	1741-6497
EXC 250 06-16	-	1741-6497
EXC 250 17-23	1741-6488	1741-6497
EXC 250 24	1741-6488	1741-6494
EXC 300 04-05	-	1741-6497
EXC 300 06-16	-	1741-6497
EXC 300 17-23	1741-6488	1741-6497
EXC 300 24	1741-6488	1741-6494
EXC 300 Hardenduro 24	1741-6488	1741-6494
EXC 400 03-12	-	1741-6497
EXC 450 03-16	-	1741-6497
EXC 500 12-16	-	1741-6497
EXC 530 09-11	-	1741-6497
EXC-F 250 06-16	-	1741-6497

FITS MODEL	FRONT PART #	REAR PART #
KTM (CONT)		
EXC-F 250 17-23	1741-6488	1741-6497
EXC-F 250 24	1741-6488	1741-6494
EXC-F 350 12	-	1741-6494
EXC-F 350 13-16	-	1741-6497
EXC-F 350 17-23	1741-6488	1741-6497
EXC-F 450 17-22	1741-6488	1741-6497
EXC-F 500 17-23	1741-6488	1741-6497
EXC-F 500 Six Days 17-23	1741-6488	1741-6497
EXC-R 450 08	-	1741-6497
SMR 450 04	-	1741-6497
SMR 450 05-06	-	1741-6497
SMR 450 07-10	-	1741-6497
SMR 450 12	-	1741-6494
SMR 450 13	-	1741-6494
SMR 450 14	1741-6490	1741-6494
SMR 450 21-22	1741-6490	1741-6494
SMR 450 23	1741-6490	1741-6494
SXC 625 03-07	-	-
XC 85 08-09	-	1741-6492
XC 105 08-09	-	1741-6492
XC 125 21-24	-	1741-6494
XC 200 06-09	-	1741-6497
XC 250 07-12	-	1741-6497
XC 250 13-16	-	1741-6494
XC 250 17-24	-	1741-6494
XC 300 06-12	-	1741-6497
XC 300 13-16	-	1741-6494
XC 300 17-24	-	1741-6494
XC-F 250 07-09	-	1741-6497
XC-F 250 11-15	-	1741-6494
XC-F 250 16	-	1741-6494
XC-F 250 17-24	-	1741-6494
XC-F 350 13-15	-	1741-6494
XC-F 350 16-23	-	1741-6494
XC-F 450 08	-	1741-6497
XC-F 450 09	-	1741-6497
XC-F 450 13-16	-	1741-6494
XC-F 450 17-22	-	1741-6494
XC-F 450 23	-	1741-6494
XC-F 505 08-09	-	1741-6497
XCF-W 250 06-16	-	1741-6497
XCF-W 350 12-16	-	1741-6497
XCF-W 350 20-22	1741-6488	1741-6497
XCF-W 450 23	1741-6488	1741-6497
XCF-W 500 21-22	1741-6488	1741-6497
XC-W 150 17-23	1741-6488	1741-6497
XC-W 150 24	1741-6488	1741-6494
XC-W 200 06-16	-	1741-6497
XC-W 250 06-16	-	1741-6497

FITS MODEL	FRONT PART #	REAR PART #
KTM (CONT)		
XC-W 250 17-23	1741-6488	1741-6497
XC-W 250 24	1741-6488	1741-6494
XC-W 300 06-16	-	1741-6497
XC-W 300 17-23	1741-6488	1741-6497
XC-W 300 24	1741-6488	1741-6494
XC-W 300 Erzbergrodeo 23	1741-6488	1741-6497
XC-W 400 07	-	1741-6497
XC-W 400 08-10	-	1741-6497
XC-W 500 13-16	-	1741-6497
SUZUKI		
RM85L (Big Wheel) 03-04	-	1741-6454
RM85L (Big Wheel) 05-22	1741-6453	1741-6454
RM-Z250 10-15	-	1741-6428
RM-Z250 19-23	1741-6424	1741-6425
RM-Z450 08-15	-	1741-6428
RM-Z450 18-23	1741-6424	1741-6425
RMX 450 Z 10-19	1741-6427	1741-6428
DR-Z125L (Large Wheel) 12-23	1741-6452	-
DR-Z400 S 00-23	1741-6426	-
YAMAHA		
YZ65 18-24	-	1741-6420
YZ85 19-21	1741-6416	1741-6422
YZ85 22-24	1741-6416	1741-6423
YZ85 (Longer Swingarm) 19-20	1741-6416	-
YZ125 22-24	-	1741-6421
YZ250 22-24	-	1741-6421
YZ250F 14-20	1741-6412	-
YZ250F 21-23	1741-6412	1741-6421
YZ250FX 16-21	1741-6412	-
YZ250FX 22-24	1741-6412	1741-6421
YZ250 X 23-24	-	1741-6421
YZ450F 14-19	1741-6412	-
YZ450F 20-22	1741-6412	1741-6421
YZ450FX 21-23	1741-6412	1741-6421
WR250F 15-16	1741-6413	-
WR250F 17-19	1741-6410	-
WR250F 20-23	1741-6415	-
WR250F 24	1741-6415	-
WR250R 08-20	1741-6409	1741-6417
WR250X 08-14	1741-6409	1741-6417
WR450F 12-15	1741-6413	1741-6419
WR450F 16-18	1741-6410	-
WR450F 19-23	1741-6415	-
WR450F 24	1741-6415	-
XT250 08-24	1741-6411	1741-6418



FRONT FORK SPRING KIT FOR HONDA XL600V TRANSALP 96-99

- Shorter braking distance
- Better balance in the bike, more comfortable riding, even with passenger
- Easy cornering
- Improved tire life
- More grip in dry and wet weather
- More confidence; it makes your ride more comfortable and/or faster
- Overall sense of confidence in the bike
- Hyperpro progressive front fork spring kits include front fork oil



FITS MODEL

Fork spring kit

PART #

0405-1215



EMULSION GAS SHOCK

- Preload adjustment (threaded spring)
- Compression adjustment; shock has adjustable length
- Rear application

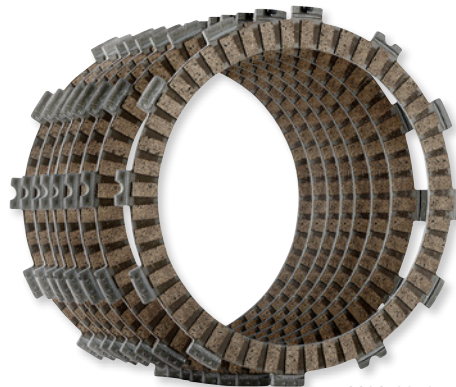


FITS MODEL	TYPE	SHOCK TYPE	TUBE COLOR	SPRING COLOR	LENGTH (MM)	PRELOAD	PART #
HONDA							
XL 79-83	TS	Emulsion Gas	Black	Black	395	Threaded spring	1312-1096

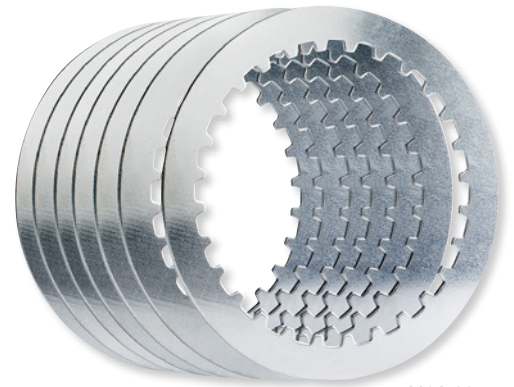


CLUTCH PLATE KITS FOR HONDA CRF250R/RX 22-24

- Designed to enhance the performance of OEM clutch baskets, inner hubs and pressure plate or Hinson parts
- Tested and raced with all the same high-quality standards as all Hinson clutch components
- High production tolerances to perfectly mate Hinson Clutch Basket, enhancing clutch basket and plate life
- Kits available in steel or fiber



1131-3876



1131-3877

- Fiber plate kit manufactured using high-quality aluminum baseplate and paper or cork friction material
- Manufactured using the highest quality materials

PART #	DESCRIPTION	PART #	DESCRIPTION
1131-3876	Cork	1131-3877	Steel



4302-7207



4302-7210



4302-7214



4302-7212

COMPLETE GRAPHICS KITS

- Includes decals for radiator shrouds, tank, number plate, airbox, lower fork guards, front fender, rear fender and swingarm

FITS MODEL	DESCRIPTION	PART #
KAWASAKI		
KX85/112 22-24	1993 KX Retro, black background	4302-7207
	2024 Monster Energy, black background	4302-7205
KLX110 10-24	1993 KX Retro, black background	4302-7206
KX125/250 03-08	1993 KX Retro, white background	4302-7208
KX250 21-24	1993 KX Retro, black background	4302-7209
	2024 Monster Energy, black background	4302-7213

FITS MODEL	DESCRIPTION	PART #
KAWASAKI (CONT)		
KX450 19-23	1993 KX Retro, white background	4302-7210
	2024 Monster Energy, white background	4302-7214
KX450 24	Monster Energy Slash, white background	4302-7204
	1993 KX Retro, white background	4302-7211
	COR 9 Kawasaki, white background	4302-7212
	2024 Monster Energy, white background	4302-7215

PRE-CUT FRAME GRIP TAPE FOR KAWASAKI KX450 24

- Pre-cut to fit model specific applications
- High-strength adhesive
- Aggressive rubberized grip texture



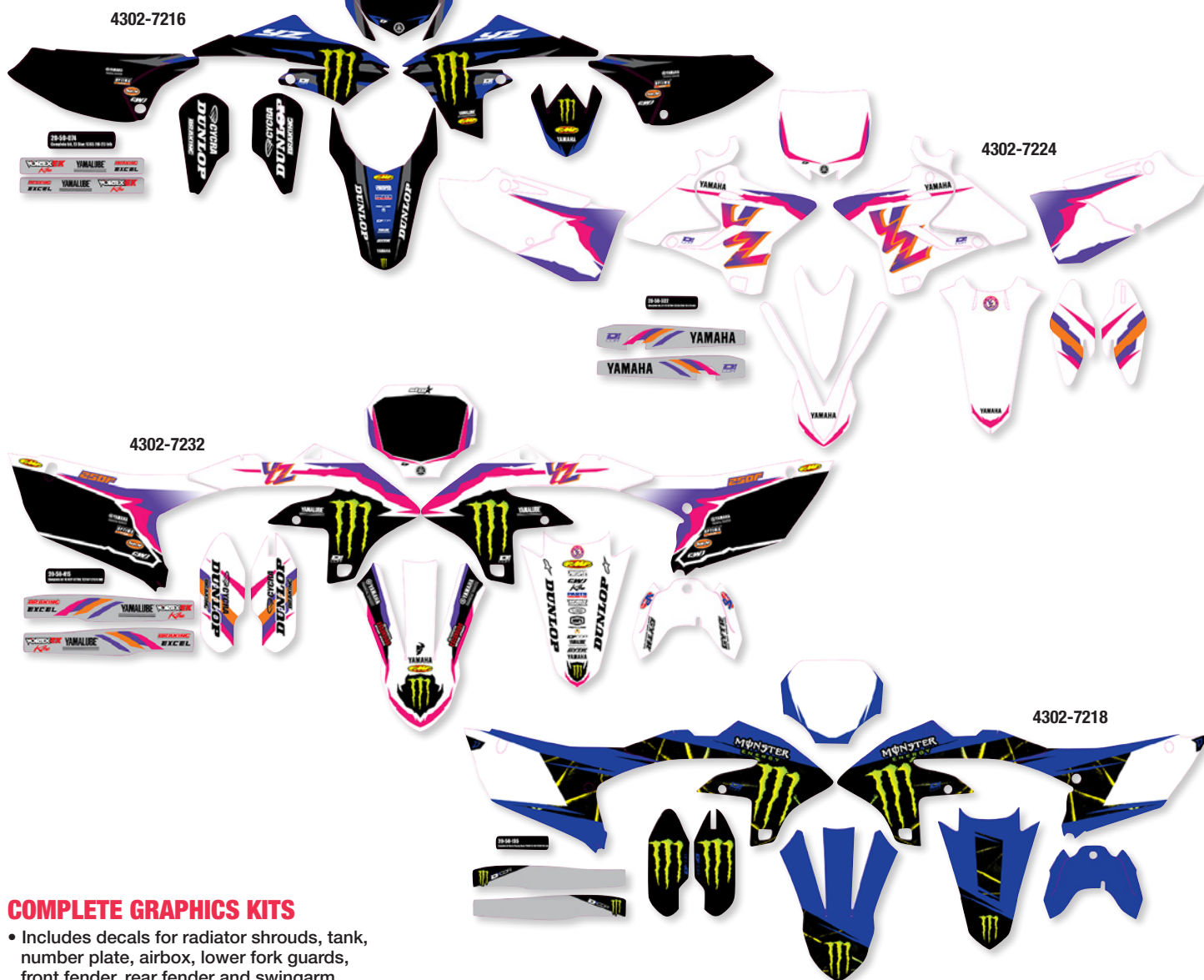
4320-2575



4320-2576

COLOR	PART #
Gray	4320-2575

COLOR	PART #
Green/black	4320-2576



COMPLETE GRAPHICS KITS

- Includes decals for radiator shrouds, tank, number plate, airbox, lower fork guards, front fender, rear fender and swingarm

FITS MODEL	DESCRIPTION	PART #
YAMAHA		
YZ65 18-24	2023.5-2024 Star Racing Monster Energy Yamaha, black background	4302-7216
YZ85 22-24	1993 YZ Retro, black background	4302-7223
TTR-110 08-24	1993 YZ Retro, black background	4302-7222
	2023.5-2024 Star Racing Monster Energy Yamaha, black background	4302-7217
YZ125/250 15-21	1993 YZ Retro, white background	4302-7224
	1993 YZ Retro Star Racing Monster Energy Yamaha, white background	4302-7220
	2023.5-2024 Star Racing Monster Energy Yamaha, white background	4302-7219
YZ125/250 22-24	1993 YZ Retro, white background	4302-7225
	1993 YZ Retro Star Racing Monster Energy Yamaha, white background	4302-7221
YZ250F 19-23	1993 YZ Retro Star Racing Monster Energy Yamaha, white background	4302-7230
	1993 YZ Retro, black background	4302-7226

FITS MODEL	DESCRIPTION	PART #
YAMAHA (CONT)		
	1993 YZ Retro, black background	4302-7227
	1993 YZ Retro Star Racing Monster Energy Yamaha, black background	4302-7232
	2023.5-2024 Star Racing Monster Energy Yamaha, black background	4302-7231
YZ250F 24	Monster Energy Slash, white background	4302-7218
	COR 9 Yamaha, white background	4302-7233
	1993 YZ Retro, white background	4302-7228
	1993 YZ Retro Star Racing Monster Energy Yamaha, white background	4302-7235
YZ450F 18-22	2023.5-2024 Star Racing Monster Energy Yamaha, white background	4302-7234
	1993 YZ Retro, white background	4302-7229
YZ450F 23-24	1993 YZ Retro Star Racing Monster Energy Yamaha, white background	4302-7236
	Monster Energy Slash, white background	4302-7218
	COR 9 Yamaha, white background	4302-7233



2312-1155



2312-1164



2312-1167



WINDSHIELDS/WINDSCREENS

- Windshields/windcreens are made from high-quality PMMA
- Standard models are designed for optimum efficiency for the average height of a rider
- High protection models also come with deflectors
- Foot protection is available for Yamaha XTZ 1200 Super Ténéré 10-13; measures 11 cm x 27 cm and 10 cm x 29 cm

FITS MODEL	TYPE	HEIGHT (MM)	THICKNESS (MM)	SMOKED BLACK	SMOKED GRAY	CLEAR
BMW						
R 1300 GS 24	High protection	450	4	-	2312-1155	2312-1154
HONDA						
NX500 24	High protection	420	3	-	2312-1169	2312-1170
NC750 X 21-24	High protection	485	4	-	2312-1157	2312-1156
XL750 Transalp 21-24	High protection	500	3	2312-1159	-	2312-1158
1800 GOLD WING/TOURING 18-23	Touring	565	4	-	2312-1163	2312-1162
1800 GOLD WING/TOURING 18-23	High protection	565	4	-	2312-1165	2312-1164
SUZUKI						
800 V-STROM DE 23	High protection	520	4	-	2312-1167	2312-1166
MOTO GUZZI						
V100/S 22-23	High protection	545	4	-	-	2312-1168

WINDSHIELDS/WINDSCREENS

- Windshields/windcreens are made from high-quality PMMA
- Standard models are designed for optimum efficiency for the average height of a rider
- High protection models also come with deflectors

FITS MODEL	TYPE	HEIGHT (MM)	THICKNESS (MM)	SMOKED BLACK	CLEAR
HONDA					
ADV350 23	High protection	430	3	2312-1161	2312-1160

2312-1161





2317-0503



2317-0505



2317-0506



WINDSHIELDS/WINDSCREENS

- Windshields/windcreens are made from high-quality PMMA
- Standard models are designed for optimum efficiency for the average height of a rider
- Full protection models also come with deflectors

FITS MODEL	DESCRIPTION	SIZE	THICKNESS (MM)	PART #
CFMOTO				
ZForce 550/800/1000	Front	Standard	5	2317-0503
UForce 1000	Front	Full	5	2317-0504
UForce 1000	Front	Standard	5	2317-0505
UForce 1000	Rear	Full	5	2317-0506



0807-0226



0807-0227



0807-0228



AIRHAWK 2 SEAT PADS

- Unique inflatable, multiple-cell design for the ultimate in comfortable seating and vibration absorption
- Made from polyurethane and features a breathable, stretchable outer cover and a nonskid urethane base to protect your seat
- Features open-mesh side panel to allow air circulation through individual air cells, creating extra ventilation to reduce heat buildup
- Shape fitting technology eliminates painful pressure points and promotes consistent blood flow for a longer, more comfortable ride
- Automatically adjusts to the shape of the rider

- Raises ride-height only slightly
- Securely fastens via double strap system running under seat or pillion
- Will not scratch or disfigure existing seat or pillion
- Valve for inflation, adjustment and deflation

DESCRIPTION	PART #
Small (measures approx. 23 cm x 28 cm or 9" x 11")	0807-0226
Medium (measures approx. 30 cm x 20 cm or 12" x 8")	0807-0227
Large (measures approx. 35 cm x 35 cm or 14" x 14")	0807-0228




BRUT-AL M-30 HANDLEBARS

- Made from aircraft grade 7075-T6 aluminum
- Anodized black surface finish
- Width measures 77,47 cm (30¹/₂"
- Clamp size measures 28,57 mm (1¹/₈" (28,57 mm or 1¹/₈" Fatbars)
- Grip size measures 22,23 mm (7/8")
- 50, 8 mm (2") rise
- 12-degree sweep
- 5-degree lift
- Sold each

DESCRIPTION

Universal fit

PART

0601-6288



BRUT-AL M-28 HANDLEBARS

- Heat-treated taper handlebar construction provides superior strength over traditional handlebars while remaining lightweight
- Made from aircraft grade 7075-T6 aluminum
- Anodized black surface finish
- Width measures 72,39 cm (28¹/₂"
- Clamp size measures 28,57 mm (1¹/₈" (28,57 mm or 1¹/₈" Fatbars)
- Grip size measures 22,23 mm (7/8")

- 50, 8 mm (2") rise
- 12-degree sweep
- 5-degree lift
- Sold each

DESCRIPTION

Universal fit

PART

0601-6287



50,8 MM (2") PIVOTING BAR RISER KIT FOR 12-23 CHEFTAIN/ROADMASTER

- Bring the stock handlebar location back toward the rider by approximately 50,8 mm (2")
- These risers are a great option for riders who want to get more upright in the seat and/or get weight off of their arms, neck and shoulders
- Work with stock cables and brake line
- Riser clamping positioning will be limited by the large OEM fairing assembly
- Riser clamping portion is 32 mm (1¹/₄") in diameter
- Accept handlebars with 32 mm (1¹/₄") clamping area
- Polished silver finish

NOTE: Will not work on 17-23 models with Ride Command.

US Patent #6,920,806.

DESCRIPTION

50,8 mm (2") pivoting bar riser kit

PART

0602-1450



50,8 MM (2") PIVOTING BAR RISER KIT FOR 15-24 INDIAN SCOUT

- 50,8 mm (2") fully adjustable bar riser allows you to dial in the perfect position for your build and riding style
- Designed to allow the Indian speedometer assembly to mount directly into the top side of the risers
- Comes with replacement caps to clamp the stem of the riser into the stock Indian bar clamp
- Also comes with four longer bolts to allow the speedometer assembly to securely attach to the top side of the risers
- Works with stock bars
- Machined from solid aircraft-grade 6061-T6 billet aluminum
- Black anodized finish
- Includes all mounting hardware

DESCRIPTION

50,8 mm (2") pivoting bar riser kit

PART

0602-1455



44 MM (1³/₄") PIVOTING BAR RISERS FOR 26 MM (1") HANDLEBARS

FOR KTM 390 ADVENTURE/DUKE AND HUSQVARNA SVARTPILEN 401 WITHOUT CLIP-ON BARS

- 44 mm (1³/₄") center-to-center rise with 26 mm (1") stem
- Pivot forward or backward depending on rider preference
- Black anodized finish

NOTE: Always check and confirm that your machine has adequate cable and brake line length before installing handlebar risers.



DESCRIPTION	PART #
44 mm (1 ³ / ₄ ") pivoting bar risers for 26 mm (1") handlebars	0602-1451

38 MM (1¹/₂") BARBACK BLOCK RISERS FOR HONDA REBEL 300, 500, 1100

- Very easy installation
- Lifetime warranty
- 38 mm (1¹/₂") rise
- Moves the handlebar 38 mm up and approx. 3,0 mm back
- Works with your OEM cables and lines
- Black anodized finish



DESCRIPTION	PART #
38 mm (1 ¹ / ₂ ") barback block risers	0602-1449

BH2 BAR END HOOK

- For 22,2 mm (7/8") handlebars
- Designed to improve grip and control during aggressive riding and maneuvers
- Stay connected with your sled's handlebars and feel good doing it
- Constructed of extremely durable UHMW, these are resistant to shattering on impact
- Some handlebars may require you to drill out the bar-end to allow the hook to slide in
- Not intended to work with chromoly/steel bars due to the large inside diameter of that style handlebar
- Designed to fit most aluminum snowmobile handlebars that have a straight profile (no bends at the ends)
- Sold each



DESCRIPTION	PART #
BH2 bar end hook	0634-0600

PRO-TEC HANDGUARDS

- Snocross-style, XL-size black handguards as used by many of the top ISOC race teams
- Rigid but flexible backbone is built to withstand the cold without cracking or breaking off
- Made from the same material as Flex-Tec handguards
- Extra-large coverage area keeps your hands warm and protected and provides a large surface for sponsor logos
- Guards can be used with or without the included foam extensions
- Mounts sold separately; see page 183 of the 2024 Parts Europe Snowmobile catalog

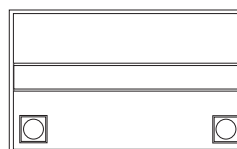


DESCRIPTION	PART #
Pro-Tec handguards	0635-2358



HIGH PERFORMANCE LITHIUM BATTERY

- Ready to use
- Lighter than lead acid batteries
- Up to 180 degrees of mounting angles
- Fast charging
- Very low self-discharge and can start engine after a long period of storage
- Impressive cold cranking performance
- Heat temperature resistance up to 230 °C
- Robust brass terminals for enhanced electrical performance
- Waterproof design



YUASA REFERENCE #	CAPACITY (AH/10HR)	POWER (WH)	CCA (EN)	LENGTH (MM)	WIDTH (MM)	HEIGHT (MM)	APPROX. WEIGHT (KG.)	TERMINAL CONFIGURATION	PART #
YTX4L+/YTZ5S, YTZ6S, YTZ7S, YTZ8V, YTX4L, YTX5L, YTX7L, YB4L-B, YB5L-B, YB6.5L-B, YB7L-B, 12N5.5-3B, 12N7A-3A	3	36	180	114	70	85	0,90	- +	2113-0938



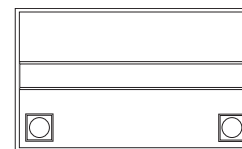
2113-0936



2113-0933

SLA MAX FACTORY-ACTIVATED AGM MAINTENANCE-FREE BATTERIES

- BGZ series batteries are designed with taller plates and built-in copper nut terminals
- Designed to offer maximum performance to big engine bikes equipped with lots of electronic accessories
- Superior capacity
- AGM construction (Absorbed Glass Material)
- VRLA battery (Valve Regulated Lead Acid)
- Sealed and factory activated
- Spillproof design
- Multi-positional fitment
- Ready and easy to use
- Increased power and extended life
- Extreme vibration resistance



YUASA REFERENCE #	CAPACITY AH (10HR)	CAPACITY AH (20HR)	CCA (EN) A (-18 °C)	LENGTH (MM)	WIDTH (MM)	HEIGHT (MM)	APPROX. WEIGHT (KG.)	TERMINAL CONFIGURATION	PART #
BGZ16H	16	16,8	240	150	88	145	5,48	+ -	2113-0937
BGZ16HL	16	16,8	240	150	88	145	5,48	- +	2113-0936
BGZ20H	20	21,1	320	175	89	152	6,62	+ -	2113-0935
BGZ20HL	20	21,1	320	175	89	152	6,62	- +	2113-0934
BGZ32HL	32	33,7	500	170	132	175	10,38	- +	2113-0933



IGNITION COILS

- Manufactured using computer-controlled technology
- Extremely temperature resistant
- Made from high-value materials for optimum ratio of weight to volume
- Mount directly on the spark plug
- Coils come with or without electronics module depending on model



2101-0380



2102-0343

MOTORCYCLE COILS

FITS MODEL	PART #
APRILIA	
RSV4 1000 Factory/APRC 09,13	2101-0491
	2101-0492
RSV4 1000R/APRC 10	2101-0491
	2101-0492
RSV4 1000R/ABS/APRC 13	2101-0491
	2101-0492
RSV4 1000 Racing Factory ABS/LE 15	2101-0491
	2101-0492
RSV4 1000RR ABS 15	2101-0491
Tuono 1000 V4 R ABS/APRC 13	2101-0491
	2101-0492
RSV4 1100 Factory ABS 19	2101-0491
	2101-0492
Tuono 1100 V4 Factory ABS 16	2101-0491
	2101-0492
Tuono 1100 V4 RR ABS 16	2101-0491
Tuono 1100 V4 Factory ABS 15	2101-0492
Tuono 1100 V4 RR ABS 15	2101-0492
BMW	
R60/7 76-80	2101-0480
R75/7 76-79	2101-0480
R80/7 77-85	2101-0480
R100/7 76-77	2101-0480
C400 ABS/X/GT/SE 18	2101-0484
C600 ABS/Sport/Sport Edition 12	2101-0484

FITS MODEL	PART #
BMW (CONT)	
C650 ABS/GT/Edition /Highline/LS/Sport 12	2101-0484
F700GS Oct 06-Dec 15	2102-0341
F800GS/GT/S/ST/Adventure Oct 04-Dec 14	2102-0341
	2102-0343 ¹
R900 RT	2102-0344 ²
	2102-0353 ¹
	2102-0343 ¹
HP 2 Enduro/Mega Aug 04-Aug 08	2102-0344 ²
	2102-0353 ¹
HP4 1000 Race 17	2101-0483
	2101-0487
RnineT 16/Pure/Racer/R 1200 GS 16-19	2101-0488
	2101-0489
S1000 XR ABS/DTC/ESA 15	2101-0483
S1000R ABS/DDC/DTC 13	2101-0483
S1000RR ABS/Pro 14	2101-0483
R1000 RS/S/R/T 76-84	2101-0480
R1150 Rockster Jan 03 - Dec 05	2102-0353
K1200 GT/R/S/Sport Mar 02-Sept 08	2102-0341
	2102-0343 ¹
R1200 GS/R/RT/S/ST/STE Edition/Adventure Feb 04-Dec 12	2102-0344 ²
	2102-0353 ¹
R1200GS ABS LC/DTC/ESA/Gussrad 13	2101-0485
R1200GS ABS LC/Speichenrad 13	2101-0485
R1200R ABS LC/DTC/ESA 14	2101-0485

FITS MODEL	PART #
BMW (CONT)	
RnineT 1200 Scrambler 16-19	2101-0487
	2101-0488
	2101-0489
R1250GS 18	2101-0490
Triple Black/Exclusive/Rally 16	2101-0485
K1300 GT/R/S Dec 07 to Dec 11	2102-0341
DUCATI	
Multistrada 1200/S/X-Diavel 13, 15	2101-0486
Streetfighter 848/Evo/Evo Corse SE/Evo Dark Jul 10-Dec 13	2102-0349
1098S Jan 09-Dec 11	2102-0349
Monster 696 300-899 Jan 08 to Dec 13	2102-0350
1199 Panigale R/S/Tricolore	2102-0350
899 Panigale	2102-0350
KTM	
EXC 250/300 17	2101-0482
MOTO GUZZI	
Eldorado/Touring/SE 13	2101-0481
MGX-21 1400 ABS Flying Fortress 16	2101-0481
Nevada 750 Anniversario/Aquila Nera Classic 12	2101-0481
V7 750 Racer/Special/Stone 12	2101-0481
V7 Limited Edition 15	2101-0481
V7 Limited/Milano/Racer/Rough/Special/Stone 17	2101-0481
V85 850 TT ABS/Travel 19	2101-0481
V9 850 ABS/Bobber/Sport/Roamer 16	2101-0481

¹ Left side. ² Right side.

SCOOTER COILS

FITS MODEL	PART #
PIAGGIO	
Beverly 250 GT 07-13	2101-0380
Camaby 08-13	2101-0380
Liberty 125/150 03	2101-0380
MP3 250 07-13	2101-0380
Beverly 350 ABS S/Police/Sport Touring/Tourer 17	2101-0481
Beverly 350 Sport Touring 12	2101-0481
Beverly 350 Sport Touring ABS 12	2101-0481
Fly 125 3V DT/DD 13	2101-0481

FITS MODEL	PART #
PIAGGIO (CONT)	
Liberty 125/150 3V 14	2101-0481
Liberty ABS Euro 5 125/S/3V/IGET 21	2101-0481
MP3 125 YOURban ERL 11	2101-0481
MP3 300 ABS/GPE/LT YOURban/Sport 11	2101-0481
MP3 350 Sport ABS 18	2101-0481
X10/Executive ABS/ABR 125/350 12	2101-0481
VESPA	
946 125 3V ABS/RED 19	2101-0481
946 126 3V ABS/RED Euro 4 21	2101-0481

FITS MODEL	PART #
VESPA (CONT)	
946 127 3V ABS/RED/Emporio Armani 13	2101-0481
Supertech/Touring 19	2101-0481
GTV 300 Sei Giorni ABS 19	2101-0481
LX 125 3V/Touring 12	2101-0481
LX 150 3V/Touring 12	2101-0481
Primavera 125 3V ABS/IGET/Touring 21	2101-0481
Vespa S 125 3V 12	2101-0481
Sei Giorni II 300 Edition ABS 20	2101-0481
Sprint 125 3V ABS/IGET 21	2101-0481



HOT SHOT SERIES LITHIUM-ION FRIENDLY CHARGING KIT

- Rick's Motorsport original design
- Includes both a stator and a lithium-ion friendly rectifier-regulator
- Will put out approximately 150 watts and power a 55-watt headlight if the bike's rotor has not been compromised
- Supplies constant power to the bike's battery

- Heavy-duty Hot Shot series version made with a special Mosfet technology that does not get hot

NOTE: This kit is not for use with standard lead acid batteries. The voltage point is set to 14V +/- 2. Please contact the manufacturer of your lithium-ion battery to ensure the product has the correct set point.



FITS MODEL	PART #
HUSQVARNA	
TE 250/300 17-18	2112-1810
TX 300 17-19	2112-1810
KTM	
EXC 250 17	2112-1810
XC 250 17-19	2112-1810

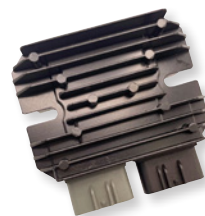
FITS MODEL	PART #
KTM (CONT)	
XC-W 250 17-18	2112-1810
EXC 300/Six Days 17	2112-1810
XC 300 17-19	2112-1810
XC-W 300 /Six Days 17-18	2112-1810

LITHIUM-ION BATTERY-COMPATIBLE RECTIFIER/REGULATORS

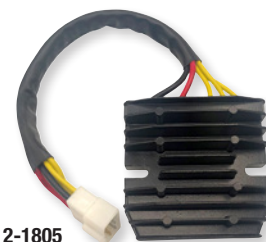
- Designed with the correct voltage set point
- The voltage set point is 14V +/- .2
- Ballistic Performance Batteries are recommended; for all other manufacturers of Lithium Ion Batteries please contact the manufacturer of the battery to ensure our product set point is compatible
- Select models have a high-performance, heavy-duty Hot Shot series version made with a special Mosfet technology that does not get hot (as noted)

NOTE: Not for use with standard lead acid batteries.

FITS MODEL	PART #
KAWASAKI	
Ninja ZX6R 09-18	2112-1807
KLZ1000 Versys 17-22	2112-1807
ZX10R 08-23	2112-1807
ZX10RR 17-23	2112-1807



2112-1807



2112-1805

FITS MODEL	PART #
SUZUKI	
GSX-R 600 01-05	2112-1805¹
GSX-R 750 98-05	2112-1805¹
GSX-R 1000 01-04	2112-1805¹
GSX-R 1300 Hayabusa 99-07	2112-1805¹

¹ Hot Shot series.

RECTIFIER/REGULATORS AND STATOR

- OEM-style rectifier/regulators
- Direct plug-in stator complete with all rubbers and OEM-style plug end
- Select models have a high-performance, heavy-duty Hot Shot series version made with a special Mosfet technology that does not get hot (as noted)

FITS MODEL	RECTIFIER/REGULATOR PART #	STATOR PART #
DUCATI		
1198 Diavel Strada 13-14	-	2112-1811
HUSQVARNA		
FE 250/350/501/S 14-16	2112-1785	-
KAWASAKI		
ZX6R/RR Ninja 03-04	2112-1791¹	-
KTM		
EXC 250/300/380 98-99	2112-1787	-
XCF-W 250//350/450/500 Six Days 12-16	2112-1785	-



2112-1811



2112-1785

FITS MODEL	RECTIFIER/REGULATOR PART #	STATOR PART #
KTM (CONT)		
EXC-F 350 12-16	2112-1785	-
450 Rally Factory Replica 14,17	2112-1785	-
EXC 500/600 LC4 92	2112-1787	-
EXC 500/Six Days 12-16	2112-1785	-
SX 620 98	2112-1787	-
SUZUKI		
DR-Z400 (kick start) 00-04	2112-1789	-

¹ Hot Shot series.



V2 THROTTLE CAM

FOR 125/250/300 SE FACTORY 21-23

- For use with the V2 Lock-On system and the ODI Fuzion throttle tube system
- Sold separately from the starter kit, these cams increase the available model options for customers wanting to use the ODI V2 Lock-On System
- Each cam sold separately



DESCRIPTION	CAM FITMENTS	PART #
V2 Throttle Cams	S2	0632-0989



HANDLEBAR MOUNT USB-C ADAPTOR

- Charge your USB-C devices on the move
- Indicator light flashes while charging
- Integrated rubber charging port cover prevents damage from dirt and dust
- 22,2 mm and 25,4 mm handlebar clamps included
- Measures 11,5 mm W x 51,2 mm L

DESCRIPTION	PART #
Handlebar mount USB-C adaptor	2120-1263



0521-2074



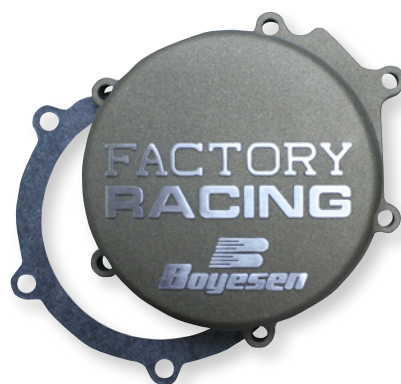
0521-2072



FLAGPOLE MOUNTS

- Works with Ciro flagpoles
- No drilling required
- Mounts come in black finish

DESCRIPTION	PART #
Mount for 12,7 mm (1/2") tubing	0521-2074
Mount for 19,5 mm (3/4") tubing	0521-2072



FACTORY IGNITION COVER FOR KAWASAKI KX500 83, 88-04

- Seals properly, guarding inside of engine from dirt and water and outlasts stock covers
- Cast from the highest grade of aluminum and is strong, yet lightweight
- Super-tough, powdercoated magnesium finish resists weathering and wear and tear
- OEM paper gaskets can be reused, or use the supplied O-ring

DESCRIPTION	PART #
Factory ignition cover	0940-2183



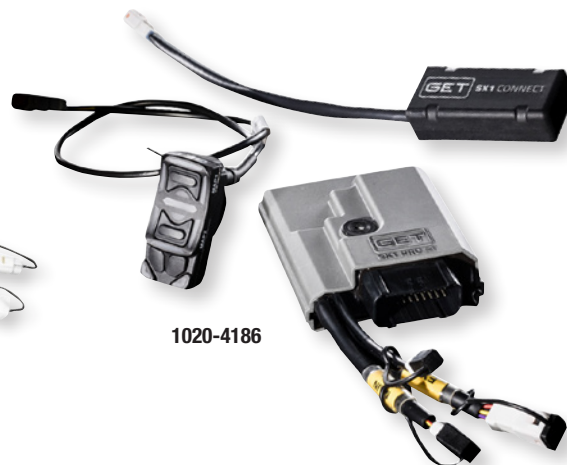
FACTORY CLUTCH COVER FOR KAWASAKI KX250/250F/250X 21-24

- The ultimate look in race performance
- Lightweight factory clutch cover provides years of outstanding protection; guaranteed not to warp
- Individually surfaced for a perfect, leak-free fit
- Super-tough, powdercoated finish resists weathering and wear and tear
- Asbestos-free gasket is bound with nitrile for tight, leak-free seal
- OEM paper gaskets can be reused, or use the supplied O-ring
- Available in black

DESCRIPTION	PART #
Factory clutch cover	0940-2184



1020-4176



1020-4186

CONTROL UNITS

RX1 PRO KITS

- Designed to exploit everything your bike has to offer ensuring better power delivery and timing at any engine speed
- Gives your bike a smoother ride, more immediate ignition and greater speed on the track
- Mounts quickly and easily directly on to the bike's main wiring without having to modify the electrical system
- Replaces OEM ECU
- Quickly processes input data coming from the CPS (Cam Position Sensor), TPS (Throttle Position Sensor), MAP (Manifold Absolute Pressure sensor), IAT (Intake Air Temperature sensor) and ECT (Engine Coolant Temperature sensor)
- Adjusts the ignition and carburetion accordingly in all weather conditions and at any altitude
- Comes with two pre-installed racing mappings which get the best out of every standard engine with a racing exhaust installed
- GPA Traction Control technology can be adjusted on ten different intervention levels for each map
- Compatible with data acquisition systems like GET SL1 via CAN-BUS (sold separately)
- Allows any rider of any level to easily customize the main mapping parameters like carburetion and ignition times in total safety using the app with GET WiFi-Com (included in kit)
- Custom builders can fine-tune engine using the Maya programming software (sold separately)

FITS MODEL	RX1 PRO BASIC	SX1 PRO
GASGAS		
EC 250 2T 24	-	1020-4184
EC 250F 21-23	1020-4176	-
EC 250F 24	-	1020-4198
EC 300 2T 24	-	1020-4183
EC 350F 21-23	1020-4177	-
EC 350F 24	-	1020-4197
EC 450F 24	-	1020-4196
EC 500F 24	-	1020-4195
MC 125 24	-	1020-4182
MC 250F 21-23	1020-4170	-
MC 250F 24	1020-4171	1020-4181
MC 250F 24	-	1020-4194
MC 350F 21-23	1020-4172	-
MC 350F 24	1020-4173	-
MC 350F 24	-	1020-4193
MC 450F 21-23	1020-4174	-
MC 450F 24	1020-4175	-
MC 450F 24	-	1020-4192

SX1 PRO KITS

- Designed to optimize the potential of your bike while maintaining the same level of reliability and improving power
- Multifunction control SX1 controller and SX1 Connect WiFi module included in the kit
- Optimal management of advance degrees and injection times in all weather conditions and at all altitude levels
- Plug-and-play installation
- Installs directly on the main wiring of the bike without modifying the electrical system
- Supplied with two racing maps developed and approved after intense tests with the best AMA and MXGP teams
- Each map can be modulated via the GPA Traction Control technology on ten different intervention levels
- Activates the electronic Launch Control system for maximum speed when cornering and starting
- GPA Switch PART #1020-4161 works with SX1 Pro units, mounting on your handlebars and allows modulation in real-time of up to ten levels of GPA Traction Control (sold separately)

DESCRIPTION	PART #
GPA Switch	1020-4161

FITS MODEL	RX1 PRO BASIC	SX1 PRO
HONDA		
CRF250R 22-24	1020-4163	-
CRF250R 24	-	1020-4187
CRF450R 23-24	1020-4162	-
CRF450R 24	-	1020-4186
HUSQVARNA		
FC 250 19-22	1020-4170	-
FC 250 23-24	1020-4171	-
FC 250 24	-	1020-4194
FC 350 19-22	1020-4172	-
FC 350 23-24	1020-4173	-
FC 350 24	-	1020-4193
FC 450 19-22	1020-4174	-
FC 450 23-24	1020-4175	-
FC 450 24	-	1020-4192
FE 250 20-23	1020-4176	-
FE 250 24	-	1020-4198
FE 350 20-23	1020-4177	-
FE 350 24	-	1020-4197



CONTROL UNITS (CONT)

FITS MODEL	RX1 PRO BASIC	SX1 PRO
HUSQVARNA (CONT)		
FE 450 20-23	1020-4178	-
FE 450 24	-	1020-4196
FE 501/510 20-23	1020-4179	-
FE 501/510 24	-	1020-4195
TC 125 23-24	-	1020-4182
TC 250 23-24	-	1020-4181
TE 150 24	-	1020-4185
TE 250 24	-	1020-4184
TE 300 24	-	1020-4183
KAWASAKI		
KX250 4T 23-24	1020-4167	-
KX250 24	-	1020-4189
KX450 22-23	1020-4166	-
KX450 24	-	1020-4188
KTM		
SX 125 23-24	-	1020-4182
SX 250 23-24	-	1020-4181
SX 300 23-24	1020-4180	-
SX-F 250 19-22	1020-4170	-
SX-F 250 23-24	1020-4171	-
SX-F 250 24	-	1020-4194
SX-F 350 19-22	1020-4172	-
SX-F 350 23-24	1020-4173	-

FITS MODEL	RX1 PRO BASIC	SX1 PRO
KTM (CONT)		
SX-F 350 24	-	1020-4193
SX-F 450 19-22	1020-4174	-
SX-F 450 23-24	1020-4175	-
SX-F 450 24	-	1020-4192
EXC 150 24	-	1020-4185
EXC 250 24	-	1020-4184
EXC 300 24	-	1020-4183
EXC-F 250 20-23	1020-4176	-
EXC-F 250 24	-	1020-4198
EXC-F 350 20-23	1020-4177	-
EXC-F 350 24	-	1020-4197
EXC-F 450 20-23	1020-4178	-
EXC-F 450 24	-	1020-4196
EXC-F 500 20-23	1020-4179	-
EXC-F 500 24	-	1020-4195
SUZUKI		
RM-Z250 19-24	1020-4165	-
RM-Z450 20-24	1020-4164	-
YAMAHA		
YZ250F 21-23	1020-4169	-
YZ250F 24	-	1020-4191
YZ450F 23-24	1020-4168	-
YZ450F 24	-	1020-4190



AIR FILTERS

- DT-1's world-class foam technology delivers maximum airflow while maintaining critical engine protection
- Their Super Seal base eliminates the need for grease and creates the cleanest and best seal on the market
- All DT-1 Air Filters are handmade with the highest quality bonded dual, triple and evolution foam available
- DT-1 Air Filters come non-oiled or pre-oiled with the highest quality flame-resistant biodegradable filter oil

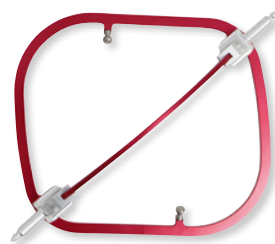
SUPER SEAL STANDARD DUAL LAYER FOAM AIR FILTERS

- DT-1 standard air filters are constructed with high quality 15 mm dual-stage foam
- Custom-designed for each air box and filter cage for the best fitment and performance

FITS MODEL	DUAL FOAM NOT-OILED	DUAL FOAM PRE-OILED	AIRPOWER CAGE DUAL FOAM	AIRBOX COVER
FANTIC				
XX 125 21-22	1011-4883	1011-4884	-	-



1011-4883



1011-4874



1011-4868

AIRPOWER CAGES

- High-quality, lightweight aluminum cages don't flex like plastic cages, and eliminate the need for a backfire screen
- Use in combination with oiled DT-1 air filters for exceptional airflow, better throttle response and increased engine protection
- Triple Foam and Evo Triple Foam fitments fit only with DT-1 Triple Foam or Evo Triple Foam air filters

AIR BOX COVERS

- Prevent water and dirt from entering air box when cleaning your bike
- Molded to fit onto the air box, and the sealing ring creates a leak-free seal

FITS MODEL	DUAL FOAM NOT-OILED	DUAL FOAM PRE-OILED	AIRPOWER CAGE DUAL FOAM	AIRBOX COVER
FANTIC (CONT)				
XX 125 23	1011-4885	-	1011-4874	1011-4868

AIR FILTERS continued on next page



AIR FILTERS (CONT)

FITS MODEL	DUAL FOAM NOT-OILED	DUAL FOAM PRE-OILED	AIRPOWER CAGE DUAL FOAM	AIRBOX COVER
FANTIC (CONT)				
XX 250 21-22	1011-4883	1011-4884	-	-
XX 250 23	1011-4885	-	1011-4874	1011-4868
XX 450 24	1011-4886	1011-4887	1011-4875	1011-4869
XE 125 21-22	1011-4883	1011-4884	-	-
XE 125 23	1011-4885	-	1011-4874	1011-4868
GASGAS				
MC 50 24	1011-4888	-	-	-
MC 65 24	1011-4889	-	-	-
MC 124 24	1011-4890	1011-4891	1011-4873	1011-4867
MC 250 24	1011-4890	1011-4891	1011-4873	1011-4867
MC 250F 24	1011-4890	1011-4891	1011-4873	1011-4867
MC 350F 24	1011-4890	1011-4891	1011-4873	1011-4867
MC 450F 24	1011-4890	1011-4891	1011-4873	1011-4867
EC 300 24	1011-4890	1011-4891	1011-4873	1011-4867
EC 350F 24	1011-4890	1011-4891	1011-4873	1011-4867
EC 450F 24	1011-4890	1011-4891	1011-4873	1011-4867
EC 500F 24	1011-4890	1011-4891	1011-4873	1011-4867
EX 300 24	1011-4890	1011-4891	1011-4873	1011-4867
EX 350F 24	1011-4890	1011-4891	1011-4873	1011-4867
EX 450F 24	1011-4890	1011-4891	1011-4873	1011-4867
HUSQVARNA				
TC 50 24	1011-4877	1011-4878	-	-
TC 65 24	1011-4879	1011-4880	-	-
TC 125 23-24	-	-	1011-4876	1011-4871
TC 250 23-24	-	-	1011-4876	1011-4871
FC 250 Rockstar Edition 22-23	-	-	1011-4876	1011-4871
FC 250 23-24	-	-	1011-4876	1011-4871
FC 350 23-24	-	-	1011-4876	1011-4871
FC 450 Rockstar Edition 22-23	-	-	1011-4876	1011-4871
FC 450 23-24	-	-	1011-4876	1011-4871
FE 350 24	-	-	1011-4876	1011-4871
FE 450 24	-	-	1011-4876	1011-4871
FE 501 24	-	-	1011-4876	1011-4871
TE 125 24	-	-	1011-4876	1011-4871
TE 250 24	-	-	1011-4876	1011-4871
TE 300 24	-	-	1011-4876	1011-4871
TX 300 23	-	-	1011-4876	1011-4871
FX 350 23	-	-	1011-4876	1011-4871
FX 450 23	-	-	1011-4876	1011-4871
FS 450 24	-	-	1011-4876	1011-4871

FITS MODEL	DUAL FOAM NOT-OILED	DUAL FOAM PRE-OILED	AIRPOWER CAGE DUAL FOAM	AIRBOX COVER
KAWASAKI				
KX450/KX450X 24	1011-4894	1011-4895	-	-
KTM				
SX 50 24	1011-4881	-	-	-
SX 65 24	1011-4882	1011-4893	-	-
SX 125 23-24	-	-	1011-4872	1011-4870
SX 150 23-24	-	-	1011-4872	1011-4870
SX 250 23-24	-	-	1011-4872	1011-4870
SX 300 23-24	-	-	1011-4872	1011-4870
SX-F 250 Factory Edition 23-24	-	-	1011-4872	1011-4870
SX-F 350 23-24	-	-	1011-4872	1011-4870
SX-F 450 Factory Edition 22-23	-	-	1011-4872	1011-4870
EXC 150 24	-	-	1011-4872	1011-4870
EXC 250 24	-	-	1011-4872	1011-4870
EXC 300 24	-	-	1011-4872	1011-4870
EXC-F 250 24	-	-	1011-4872	1011-4870
EXC-F 350 24	-	-	1011-4872	1011-4870
EXC-F 450 24	-	-	1011-4872	1011-4870
XC 250 23	-	-	1011-4872	1011-4870
XC 300 23	-	-	1011-4872	1011-4870
XC-F 250 23	-	-	1011-4872	1011-4870
XC-F 350 23	-	-	1011-4872	1011-4870
XC-F 450 23	-	-	1011-4872	1011-4870
SMR 450 24	-	-	1011-4872	1011-4870
TM				
EN 125 22	1011-4892	-	-	-
EN 250 22	1011-4892	-	-	-
EN 300 22	1011-4892	-	-	-
EN 450 Fi 22	1011-4892	-	-	-
EN 530 F 22	1011-4892	-	-	-
EN 250 F 22	1011-4892	-	-	-
MX 125 22	1011-4892	-	-	-
MX 144 22	1011-4892	-	-	-
MX 250 22	1011-4892	-	-	-
MX 250 Fi 22	1011-4892	-	-	-
MX 300 22	1011-4892	-	-	-
MX 450 Fi 22	1011-4892	-	-	-
MX 530 F 22	1011-4892	-	-	-



1011-4803

1011-4796



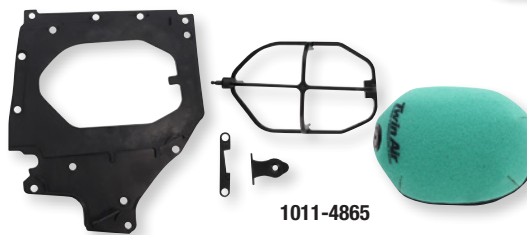
1011-4800



1011-4861

STANDARD FILTERS

- Twin Air dual-stage filters are the choice of top factory teams and riders worldwide
- Dual-bonded foam design filters out even the smallest dirt particles, while allowing more airflow than two separate layer filters (flow bench proven)
- Flat foam sealing ring provides a secure seat against the airbox, even in the worst riding conditions
- Twin Air filters are slightly smaller than stock, making them easier to change while increasing dead air space around the filter for better performance



1011-4865



1011-4864

FACTORY PRE-OILED AIR FILTERS

- The same factory treatment that race teams and OEMs receive is now available for all Twin Air users
- Filters are pre-oiled with Twin Air Bio-Foam Filter Oil using our state-of-the-art filter oiling machines to provide the ultimate consistency in pore coverage
- Same industry-leading Twin Air Filter pre-oiled for your convenience
- Resealable bag included

POWERFLOW KITS

- 2-stroke kits include a Twin Air filter and a rigid, lightweight, billet aluminum cage that replaces the flimsy plastic stock cage and provides a tight seal to the airbox
- 4-stroke kits replace the air-restricting stock backfire screen with a screen that has a special backfire-resistant layer of foam laminated to the inside
- Include a rigid, lightweight billet aluminum cage

AIRBOX COVERS

- Remove the air filter and pressure wash the inside of the airbox by covering the carb inlet with a watertight cap
- Made of PVC with a rubber sealing ring
- Top screw included

FITS MODEL	STANDARD AIR FILTERS	PRE-OILED AIR FILTERS	POWERFLOW KITS	REPL. FILTERS FOR POWERFLOW KITS	REPL. PRE-OILED FILTERS FOR POWERFLOW KITS	AIRBOX COVERS
GASGAS						
MC 125/250, EC 250/300, EX 250/300 24	-	1011-4803	-	-	-	-
MC-F 250/350/450 24	-	-	-	-	1011-4796 ²	-
HUSQVARNA						
TC 50 24	1011-4800	1011-4860	-	-	-	1011-4861
TC 65 24	1011-4801	1011-4799	-	-	-	1011-4863
TC 125/250, TX 300 23-24	-	1011-4803	-	-	-	-
FC 250/350/450, FX 350/450 23-24	-	-	-	-	1011-4796 ²	-
FE 350/450/501, FS 450 24	-	-	-	-	1011-4796 ²	-
TE 125/250/300 24	-	1011-4803	-	-	-	-
KAWASAKI						
KX450/X 24	1011-4804	1011-4795	1011-4865	1011-4864 ²	-	1011-4790 ¹
KTM						
SX 50 24	1011-4800	1011-4860	-	-	-	1011-4861
SX 65 24	1011-4801	1011-4799	-	-	-	1011-4863
SX/XC 125/25/300 23-24	-	1011-4803	-	-	-	-
SX-F 250/350/450, XC-F 250/350/450 23-24	-	-	-	-	1011-4796 ²	-
EXC 125/250/300 24	-	1011-4803	-	-	-	-
EXC-F 250/350/450 24	-	-	-	-	1011-4796 ²	-
TRIUMPH						
TF 250-X 24	1011-4793	1011-4866	-	-	-	-

¹ For PowerFlow kit only. ² Flame retardant filter.

RADIATOR SLEEVE FOR KAWASAKI KX450/X 24

- Fits over the radiator louvers to prevent dirt, sand and mud from clogging the radiator
- Made from nylon-coated glass yarn material
- Easy installation – simply remove the louvers, slide on the sleeve and re-install on the radiator



DESCRIPTION	PART #
Radiator sleeve	1904-0308

TWIN AIR BEANIE

- Embroidered Twin Air logo
- Available in black
- One size fits most



DESCRIPTION	PART #
Twin Air beanie	2501-4306



Includes Clear & Dark Smoke Optics Shield™
Includes Dark Smoke DropShield™



ECE 22.06

AIRFORM™ MIPS

- MIPS Brain Protection System can reduce harmful forces transmitted to the brain in certain types of impacts by allowing a slight uncoupled movement of the shell and liner during a crash
- Injection-molded polycarbonate shell for strength and durability
- Internal airflow geometry
- Continuous venting system
- Sculpted neck roll
- Fog-Free Icon Optics™ Shield with Rapid-Release™ System
- Prolock™ positive shield locking system
- TracShield™ shield with tear-off posts available; sold separately
- Internal Dropshield™ with exterior switch
- Removable molded breath deflector
- Removable Hydradry™ 3-piece moisture wicking liner
- Internal speaker pockets work with ICON's RAU™ Bluetooth device
- All World Standard meets or exceeds the following: DOT FMVSS 218 (USA), ECE R22.06 (Europe), and PSC (Japan) helmet safety standards
- See size chart on page 30 before ordering

NOTE: Does not ship with PSC certification stickers unless purchased from an authorized dealer in that country.

NOTE: The DropShield™ visor must only be used while the main face shield is in the fully closed position.



MUNCHIES™

SIZE	BLUE	SIZE	BLUE	SIZE	BLUE
XS	0101-16967	L	0101-17043	3X	0101-17046
S	0101-16968	XL	0101-17044		
M	0101-16969	2X	0101-17045		



ECE 22.06

AIRFORM™ MIPS (CONT)



A

Includes Clear & RST Blue Optics™ Shields

Speedfin™ includes Blue Dayglo Insert



B

Includes Clear & RST Purple Optics™ Shields

Speedfin™ Includes Green Dayglo Insert



All include Dark Smoke DropShield™
All include Rubatone Black Speedfin™



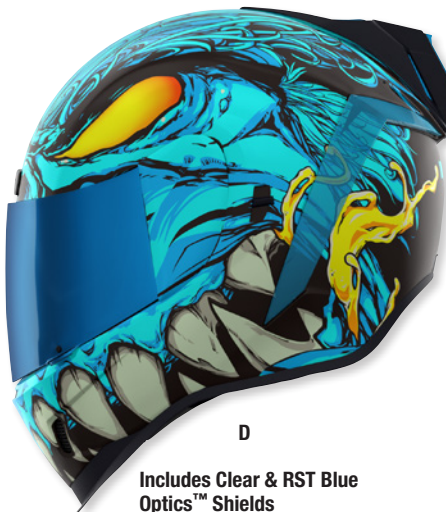
Glow in the dark



C

Includes Clear & Dark Smoke Icon Optics™ Shields

Includes Dark Smoke DropShield™



D

Includes Clear & RST Blue Optics™ Shields

Speedfin™ Includes Blue Dayglo Insert



E

Includes Clear & RST Blue Optics™ Shields

Speedfin™ Includes Blue Dayglo Insert

MANIK'RR™

SIZE	(A) RED	(B) PURPLE	(C) DARK BLACK	(D) LIGHT BLUE	(E) PINK
XS	0101-17010	0101-16970	0101-17003	0101-17014	0101-17022
S	0101-17011	0101-16971	0101-17004	0101-17015	0101-17023
M	0101-16934	0101-16972	0101-17005	0101-17016	0101-17024
L	0101-16935	0101-16973	0101-17006	0101-17017	0101-17025
XL	0101-16936	0101-16974	0101-17007	0101-17018	0101-17026
2X	0101-16937	0101-17012	0101-17008	0101-17019	0101-17027
3X	0101-16938	0101-17013	0101-17009	0101-17020	0101-17028



Includes Clear FliteShield™ & RST Green ForceShield™
Includes Dark Smoke DropShield™



AIRFLITE™ MIPS

- MIPS Brain Protection System can reduce harmful forces transmitted to the brain in certain types of impacts by allowing a slight uncoupled movement of the shell and liner during a crash
- Injection-molded polycarbonate shell for strength
- Multiple oversized intake and exhaust ports are strategically placed to keep you cool and comfortable, including four intake vents, MX-inspired chinbar vent and two exhaust ports that channel air between the comfort liner and the protective, energy-absorbing EPS foam liner
- Quick-change, fog-free outer FliteShield™ keeps debris away, while the internal, interchangeable DropShield™ keeps the sun in check with a flip of a switch
- Removable molded breath deflector and chin curtain
- Moisture-wicking Hydradry™ interior is fully removable and washable
- Both wind drag and weight are decreased by sculpting the traditional neckline of the Airflite™ to avoid jacket or suit interference
- Rubatone is a matte rubberized paint developed to match your riding gear
- Meets DOT FMVSS 218 (USA), ECE 22.06 (Europe) and PSC (Japan) safety and testing standards
- See helmet size guide on page 30 before ordering

NOTE: Does not ship with PSC certification stickers unless purchased from an authorized dealer in that country.

SNACK ATTACK™

SIZE	PART #	SIZE	PART #	SIZE	PART #	SIZE	PART #
XS	0101-16921	M	0101-16926	XL	0101-16931	3X	0101-16933
S	0101-16924	L	0101-16929	2X	0101-16932		





ECE 22.06

AIRFLITE™ MIPS (CONT)



Includes Clear & RST Sunset FliteShields™
Includes Dark Smoke DropShield™



Glow in the dark



BLEGH™

SIZE	RED
XS	0101-16919
S	0101-16920

SIZE	RED
M	0101-16922
L	0101-16923

SIZE	RED
XL	0101-16925
2X	0101-16927

SIZE	RED
3X	0101-16928



A

Includes Clear TracShield™
Includes Dark Smoke TracShield™



B

Includes Yellow TracShield™
Includes Dark Smoke TracShield™



ECE 22.06

AIRFRAME™ PRO CARBON 4TRESS™

- Increased angle of attack designed to maintain visibility and stability
- Compressed, compact shape
- Handcrafted Carbon Fiber shell
- Four unique shell sizes for minimized mass and drag
- Sculpted neck roll reduces jacket/suit interference
- Five-piece modular liner with moisture-wicking Hydradry™
- Linear ported forehead vents
- Low-profile vents throughout the shell
- Fog-Free Icon Optics™ Shield with Rapid-Release™ System
- Prolock™ positive shield locking system
- Removable breath deflector and chin curtain
- TracShield™ shield with tear-off posts available; sold separately

- All World Standard meets or exceeds the following: DOT FMVSS 218 (USA), ECE R22.06 (Europe), and PSC (Japan) helmet safety standards
- See helmet size guide below before ordering

NOTE: Does not ship with PSC certification stickers unless purchased from an authorized dealer in that country.

SIZE	(A) BLACK	(B) YELLOW
XS	0101-16652	0101-16659
S	0101-16653	0101-16660
M	0101-16654	0101-16661
L	0101-16655	0101-16662

SIZE	(A) BLACK	(B) YELLOW
XL	0101-16656	0101-16663
2X	0101-16657	0101-16664
3X	0101-16658	0101-16665

ICON HELMET SIZE CHART

SIZE	HAT SIZE	INCHES	CENTIMETERS
XXS	6 ³ / ₈ - 6 ¹ / ₂	20 ¹ / ₈ - 20 ¹ / ₂	51 - 52
XS	6 ⁵ / ₈ - 6 ³ / ₄	20 ⁷ / ₈ - 21 ¹ / ₄	53 - 54
S	6 ⁷ / ₈ - 7	21 ⁵ / ₈ - 22	55 - 56
M	7 ¹ / ₈ - 7 ¹ / ₄	22 ³ / ₈ - 22 ³ / ₄	57 - 58

SIZE	HAT SIZE	INCHES	CENTIMETERS
L	7 ³ / ₈ - 7 ¹ / ₂	23 ¹ / ₈ - 23 ¹ / ₂	59 - 60
XL	7 ⁵ / ₈ - 7 ³ / ₄	24 - 24 ³ / ₈	61 - 62
2X	7 ⁷ / ₈ - 8	24 ³ / ₄ - 25 ¹ / ₈	63 - 64
3X	8 ¹ / ₈ - 8 ¹ / ₄	25 ¹ / ₂ - 26	65 - 66