

PARTS EUROPE[®] *Magazine*

SPRING 2020 ★ VOL. 11, #2

OFF-ROAD PERFORMANCE!



MOOSE RACING HAS YOU COVERED

Due to COVID-19 measures, some of the information in this magazine might be obsolete.



9901-2634

- ★ Event Reports
- ★ Product Highlights
- ★ New Vendors



AGGRO WINCHES



2041 KG SYNTHETIC ROPE
1587 KG SYNTHETIC ROPE
1134 KG SYNTHETIC ROPE

2041 KG WIRE ROPE
1587 KG WIRE ROPE
1134 KG WIRE ROPE

BLACK POWDER COATED FINISH | IP67 WATERPROOF SEALING | DURABLE PLANETARY GEAR TRAIN
LOAD HOLDING BRAKE | ZINC PLATED HOOK | MOUNTING PLATE WITH HARDWARE

PARTSEUROPE.EU

PARTS PARTS PARTS
UNLIMITED CANADA EUROPE

MOOSEUTILITIES.COM | YOUR LEADER IN ATV/UTV ACCESSORIES



HONDA

MOOSE
UTILITY DIVISION

PARTS EUROPE[®] *Magazine*

Publisher / Editor-in-Chief: Don Emde · don@emdebooks.com
Editor: Dennis Johnson · dennis@emdebooks.com
Art Director: Morgan Williams
Production Manager: Jen Rose · jen@emdebooks.com
Copy Editor: Tracy Emde
Webmaster: Jeff Emde
Design Assistant: Kristina Nystul Breaux
Contributing Writers: Beth Dolgner, Don Emde, Ari Henning,
Dennis Johnson, Laura Keren,
Joe Kress
Contributing Photographers: Juan Pablo Acevedo, Laura Keren,
Horst Rösler, Taglioni S., Bavo Swijgers

Thanks also to everyone at Parts Europe, Parts Unlimited, Drag Specialties and Edge Advertising for your assistance and support!

To our readers: Editorial space in this publication has been offered on an "advertorial" basis. While we have done our best to check the facts, our readers should be aware that the responsibility for accuracy rests with the manufacturers, vendors or sponsors who provided the information to us. – Publisher.

Parts Europe Magazine is published by Don Emde Inc., PO Box 6118, Laguna Niguel, CA 92607 USA. Copyright © 2020 by Don Emde Inc. All rights reserved. No part of this publication may be reproduced or transmitted in any form or by any means, electronic or mechanical, including photocopying, recording, or by any information storage or retrieval system without permission from the publisher. Don Emde Inc. cannot take responsibility for lost or misdirected mail. Don Emde Inc. assumes no liability for any material published herein. All statements and information are the responsibility of the authors and sponsors.



Publishing office:
PO Box 6118, Laguna Niguel, CA 92607 USA
Tel: 949-632-4668
Web: www.partsmagazineonline.com

Printed in Germany

NOTICE: Parts Europe does not sell direct to the public. To purchase products seen in this magazine, please see your dealer.

DEALERS!: Register today as a Parts Europe dealer for convenient 24/7 online ordering at: www.partseurope.eu or call: 0049 (0) 6501 96950

PARTS EUROPE

Parts Europe GmbH
Conrad-Röntgen-Strasse 2
54332 Wasserliesch / Trier Germany

General Info:

Tel: +49 (0) 6501 / 96 95 0
Email: info@partseurope.eu

Sales info:

Tel: +49 (0) 6501 / 96 95 2000 Fax: +49 (0) 6501 / 96 95 2650
Email: sales@partseurope.eu Web: www.partseurope.eu



CONTENTS

Spring 2020 ★ Vol. 11 #2

ON THE COVER

» 32 **Off-Road Performance:**
Moose Racing has you covered!



DEPARTMENTS

» 6 **Welcome Letter**
» 10 **News & Events**
» 72 **Parts Department**

PRODUCT SHOWCASE

» 36 **Dunlop**
» 38 **Drag Specialties/
Parts Europe Batteries**
» 40 **LA Choppers**
» 44 **THOR**
» 46 **Maxima Racing Oils**
» 48 **Icon**
» 50 **Pro Circuit**
» 52 **Haynes/Clymer**
» 53 **Saddlemen**
» 54 **Moose Utility Division**
» 55 **BDL**
» 56 **Alpinestars Street**
» 57 **Alpinestars Off-road**
» 58 **Cometic**
» 59 **Michelin**
» 60 **Bikeman Performance**
» 61 **TRW**
» 62 **Moto-Master**
» 63 **Slippery**
» 64 **Rekluse**
» 65 **Z1R**
» 66 **OptiMate**
» 68 **Sunstar**
» 69 **LePera**
» 70 **Nelson-Rigg**
» 71 **Airmousse**

#1 BRAND IN THE USA

NOW AVAILABLE THROUGHOUT EUROPE



TAKING ON THE WORLD!

MAXIMILIAN SCHEIB ORELAC RACING VERDNATURA / FIM SUPERBIKE WORLD CHAMPIONSHIP SERIES

MAXIMA 530RR is a full synthetic, triple ester 4-stroke engine oil designed to ensure maximum performance while providing maximum protection under the most severe road race conditions. The extensively developed formulation produces more horsepower & torque while providing excellent clutch feel. Exotic esters and regenerative polymers combine with the world's most advanced additive system to deliver unrivaled engine, clutch and gear protection.



CRUSHING IT IN PORTUGAL!

RYAN SIPES "THE GENERAL" 2019 ISDE CHAMPION / RED BULL KTM

MAXIMA FORMULA K2 INJECTOR is a full synthetic, triple ester 2-stroke engine oil designed to ensure optimum protection and performance under extreme race conditions. Advanced, low-ash additive system minimizes carbon build up while preventing rust, corrosion and wear. Designed for direct-injected systems, but robust enough to be used as a premix at any OEM-recommended fuel: oil ratio.



THE SANDS OF THE DAKAR

PATRICIO CABRERA 6X DAKAR COMPETITOR

MAXIMA PRO PLUS+ SYNTHETIC ENGINE OIL is a full synthetic, ester-fortified 4-stroke engine oil designed to ensure optimum protection, peak performance and positive clutch feel. For use in all motorcycle brands: Kawasaki, Yamaha, Honda, Suzuki, KTM, Husqvarna and more.

Exceeds the requirements of API SN PLUS / JASO MA2.



AVAILABLE THROUGH PARTS EUROPE / MADE IN THE USA / MaximaUSA.com



In This Issue

by Don Emde



While many brands in the off-road market specialize in selected categories such as Motocross, Adventurebikes, Enduro & Rally or Side-by-Side UTVs—Moose Racing does it all not only with gear for the riders, but track-tested replacement parts, tools and upgrades for their machines too.

Starting on page 34 in this issue we spotlight Moose Racing's latest new offerings for both two- and four-wheel off-roading. Be sure to check out their expanded line of gear inspired by the long-running Agroid helmet graphic, which now adorns helmets with the revolutionary MIPS Brain Protection System under the shell. The new Agroid jerseys and pants not only complete the look of the helmet design, but innovative fit and breathability features are built in as well.

Moose Racing continues to expand on its line of shop tools with many new items to service both front and rear suspensions, chains, bleed clutch and brake lines, even charging batteries. And the ever-popular UTVs get their share of attention from the engineers, with plenty of products for the two most popular machines, the Polaris RZR1000 and Can Am Maverick X3. Check out the new high-tech seats and Insurgent tires.

Although many events are temporarily on hold due to the Coronavirus pandemic, the Parts Europe staff had been very active in the months prior. We feature a number of races and shows, including the Matterley Basin motocross in the UK where legendary motocross rider Antonio Cairoli made his debut in THOR gear aboard a DeCarli Factory KTM 450. Cairoli, a 9-time world champion, eagerly awaits the resumption of racing in search of a tenth title.

And lastly, our traveling photojournalist, Horst Roesler was in Verona, Italy in January for Motor Bike Expo 2020. As usual, the crowds were huge and spirits high. That seems now like so long ago, and how the world has changed since.

We wish good health to all of our readers everywhere with the hope that the dark clouds will soon pass. With riders throughout Europe being limited as many are now, it is likely they will be eager to hit the road when the "all clear" is given. We should not be surprised to see a large boost in demand for service items when that happens, but we'll take it a step at a time. Be well.

Sincerely,
Don Emde



Publisher / Editor-in-Chief



**PARTS
EUROPE**

**YOU WANT A
JOB THAT IS
PERFECT
FOR YOU?**

■ Andrea – Sales Agent since 2015

- **YOU** are all fired up about motorsports, have gained first professional experience in the field, and you know your way around replacement parts and accessories for several models?
- **YOU** are smart, have a talent for customer support and you are eager to help our dealers every day?
- **YOU** are a team player since only in a team you are able to fully exploit your talents and also go full throttle on the job?

**Then join our
SALES-TEAM as:**

- **Freelance Sales Representative** for Switzerland*
- **Freelance Sales Representative** for Germany*
- **Sales Agent D/A/CH***
- **Sales Agent France***

* All genders (m/f/d) are welcome!

**WE
SUPPORT
THE SPORT®**

Parts Europe GmbH
Conrad-Röntgen-Straße 2
54332 Wasserliesch/Trier (Germany)
Web: www.partseurope.eu
E-mail: career@partseurope.eu



**IMPROVE YOUR RIDE WITH
MORE STORAGE CAPACITY.**

THE INSTAN



TACTICAL LUGGAGE
RAIN COVER *INCLUDED



3515-0198
R1300LXE TACTICAL



3515-0197
TR3300DE TACTICAL



3515-0199
TR2300DE TACTICAL



3516-0271
TS1450R TACTICAL



T UPGRADE!

TRUSTED SOLUTIONS SINCE 1987.



3516-0272
TS1620R TACTICAL



3516-0270
TS3200DE TACTICAL



3515-0202
BR3400 TACTICAL



3501-1364
BR4100 TACTICAL



3515-0200
S3500 TACTICAL

Cairoli Podiums at Season Opener in Matterley Basin

SEASON ON HOLD FOR TIME BEING

Prior to the postponement of the 2020 FIM Motocross World Championships due to the global outbreak of the coronavirus, the competitive contenders of the MXGP class were able to get in two opening rounds before the season was stopped.

Now flying the THOR colors, longtime KTM rider Antonio Cairoli made the most of the muddy Matterley Basin circuit in the United Kingdom at the season opener by putting in two strong motos to secure his first podium of the series.

Sporting the THOR Prime Pro gear, the nine-time world champion narrowly missed out on a podium in moto 1, but came out firing in moto 2 for a third-place finish, a performance that landed him third place in the points standings. Teammate and fellow THOR/KTM rider Jorge Prado came away from the series kickoff placing in the top 10 of the points standings.

A week later at the MXGP of the Netherlands at Valkenswaard Eurocircuit, the THOR riders were once again met with some tough conditions thanks to the track's infamously deep sandy ruts.

While it was a rough round of racing for both Cairoli and Prado, they came out of what would be the last race for an unknown amount of time, still holding spots in the top 10 points standings, with Cairoli at third place and Prado at eighth.

Over at the newly minted GASGAS/Standing Construct team, THOR rider Glenn Coldenhoff came away from the second round of racing holding at sixth place in the overall points run.

It's uncertain when the season will pick back up again given the daily changes related to the coronavirus outbreak, but stay tuned for when this group of talented riders once again takes to the track in the battle for the championship. ■

THOR/KTM rider Antonio Cairoli kicked off the truncated MXGP season at the opening round at Matterley Basin with a performance that earned him a third-place spot in the points run.

Juan Pablo Acevedo photos





**STRONG.
RELIABLE. SAFE.**

Our brake and clutch systems for motorcycles exceed the original standards for maximum safety and performance. That's why we make the parts that bikers around the world rely on.



trwaftermarket.com



**PUSH IT
FURTHER.**

**GEOMAX
EN97**

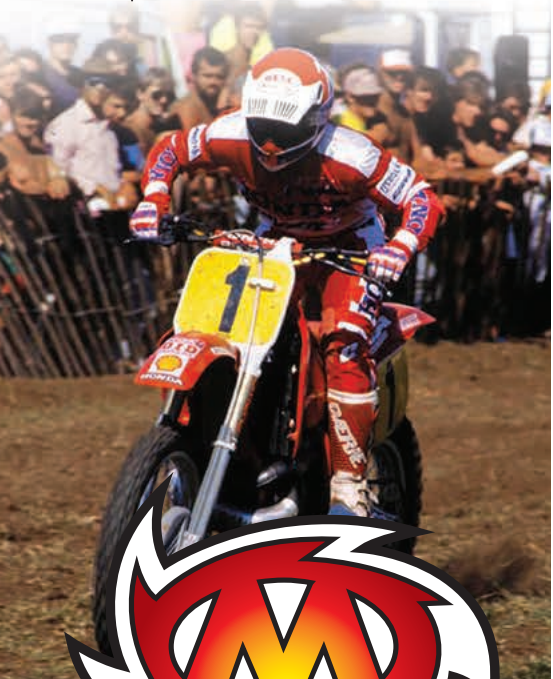
Developed for FIM enduro competition at the very highest level: grip, confidence and durability to succeed.



Vintage^{MX}
VINTAGE MOTOCROSS DISC

Authentic look for your old school MX bike.

Keep it Old school.



Moto-Master[®]
Brake Systems

MOTO-MASTER.COM

2020 GASGAS Standing Construct Factory Team

Marking the brand's first foray into the FIM Motocross World Championship, GASGAS announced its GASGAS Standing Construct factory team for the MXGP class, featuring riders Glenn Coldenhoff and Ivo Monticelli.

The move came after GASGAS Motorcycles became a part of Pierer Mobility AG – the parent company of KTM and Husqvarna – in 2019 when Pierer entered into an agreement with the OEM's owner Black Toro Capital to acquire 60 percent of GASGAS.

"It's great to be a rider on a brand that is new to MXGP and to be a part of GASGAS's history is an amazing feeling. I'm looking forward to making some good results," said Coldenhoff, who placed third in the 2019 MXGP championship. ■



THOR/GASGAS riders Glenn Coldenhoff (left) and Ivo Monticelli will represent the brand during its first time competing in the premier class of the FIM Motocross World Championships. *Bavo Swijgers photo*



THOR/KTM rider Florian Miot put in a 6-3 performance at the first round of the Motocross European Championship at Matterley Basin to earn a third-place spot in the EMX125 class points run. Miot rode his KTM 125SX to the fastest time in his qualifying group while topping the combined timesheet as well. In his second moto, he got a good start and easily took third place. *Eric Laurijssen photo*

Verona Motor Bike Expo

WHERE CUSTOM IS KING *Words and photos by Horst Rösler*

When travelling to Verona in January for the Motor Bike Expo, anything can be expected. The 12th edition of Italy's biggest custom bike event has become the starting point of the custom bike show season.

And it has been a continuous story of changes and evolution in a time that sees so many changes in many fields. One thing however seems to remain constant – the passion of the Italian customizers for personalized bikes, no matter how impossible their creations seem.

When it comes to passionate customizing, there are no lim-



From stock to mild to wild, the Verona Motor Bike Expo is all about motorcycles.



continued on page 14...

**PARTS
EUROPE**

CHAMPIONS POWER

Tim Gajser
2019 MXGP
WorldChampion



VERTEX
PISTON & POWER



• DESIGN • PERFORMANCE • RELIABILITY

moto3

info@vertexpistons.com www.vertexpistons.com

MXGP

...continued from page 13

its, no walls, no concerns for practicability in the minds of Italian builders. The genes of Michelangelo and Leonardo da Vinci are still present in the Italian customizers – and there is no better place to see the results than Motor Bike Expo in Verona. ■



The late, great King of Custom, Arlen Ness, was honored and memorialized throughout the show with displays showing his famous smiling face.

Andrea Radaelli of Radikal Choppers picked up the King of Verona honors for his radically customized BMW R1100S.



It doesn't matter whether it's metric or V-twin, if it's a custom build, it's welcome at the Motor Bike Expo.



As usual, the Parts Europe booth was a hotbed of activity, with showgoers crowding in to get an up-close-and personal look at apparel, parts and accessories from a number of popular brands.



THE NEW POWER IN BELT DRIVE SYSTEMS

PREMIUM DRIVE BELT

Manufactured to exact OEM specifications
Direct replacement with improved power transfer

Made in THAILAND
Made in THAILAND
Made in THAILAND
Made in THAILAND
Made in THAILAND

.8
28
728
4728

Made in THAILAND
Made in THAILAND
Made in THAILAND
Made in THAILAND
Made in THAILAND

JTB4728
JTB4728
JTB4728
JTB4728

MAX KVR

ARAMID FIBERS

REINFORCED FOR LONGER LIFE
AND IMPROVED PERFORMANCE

FOR SCOOTER AND ATV

JT DRIVE BELTS IS A PRODUCT OF BIKE ALERT PLC

JT[®]
DRIVE BELTS



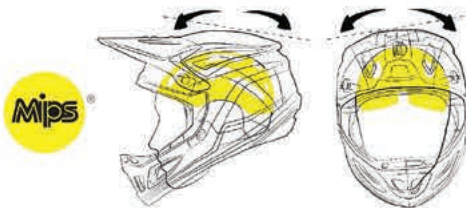
ZIR
ZIR.COM

PARTS PARTS PARTS
UNLIMITED CANADA EUROPE

PARTSEUROPE.EU

F.I. FLANK

- EQUIPPED WITH MIPS® TECHNOLOGY
- INJECTION MOLDED POLYCARBONATE SHELL
- FRICTION HINGE VISOR IS EASILY ADJUSTED AND SECURED
- 9 INTAKE AND 3 EXHAUST VENTS FOR VENTILATION
- MULTI DENSITY EPS LINER FOR IMPACT ABSORPTION
- EXTRA LARGE EYE PORT FOR EXCELLENT FIELD OF VISION
- FULLY REMOVABLE MOISTURE WICKING LINER AND CHEEK PADS
- REMOVABLE NOSE GUARD PROVIDES EXCELLENT COVERAGE FROM ROOST
- DOT AND ECE APPROVED





**There's Only One #1
Belt Drives LTD.**



**Custom Billet
Forward Controls**



Billet Calipers



**No one comes close to
BDL's collection of open
and closed Belt Drives**



**Industry's largest
selection of Primary
and Final Drive Belts**



**Competitor
Clutch**



**Primo replacement
Clutch Pack**

BELTDRIVES.COM

**A NEW
ADVENTURE
DAWNS.**

**TRAILMAX
MERIDIAN**

The all-new tyre for bikes with a sense of adventure – a class-leading performer on road and trail.

dunlop.eu



THOR rider Adrien van Beveren. Bavo Swijgers photo



Enter the Sand Man – Adrien van Beveren

Due to their unique nature, beach races tend to be very popular with riders and spectators, with some of the larger races attracting several hundred riders.

The Enduropale du Touquet (formerly named the Enduro du Touquet) has been held every spring since 1975 at the seaside town of Le Touquet in France with some 1,000 motorbikes and ATVs. The event attracts riders and often around 250,000 spectators from across Europe.

One of those riders famous for racing the Enduropale is a young Frenchman who we know today as one of the most promising Rally riders in more than 20 years, Adrien van Beveren.

Born in 1991, Adrien can still remember his thoughts when he saw his first Enduropale in Le Touquet, a neighboring city near his home town. "Oh, they get so fast on the beach, that's crazy," he recalls. Well, not so crazy as to discourage him from participating – and winning – the prestigious sand race for three years in a row in 2014, 2015 and 2016.

Even though he has followed MXGP since he was young, Adrien's heart has always belonged to the Enduropale. Growing up nearby, riding in the sand was the only way to go off-road riding year around. As soon as he turned 18, he entered his first race at Le Touquet, vanishing in sixth place. Knowing that wasn't good enough, he worked hard on his skills and went on to his three-time victory.

Adrien says his favorite win came in 2016 after he had just returned from his first Dakar Rally experience where he finished sixth. "I was completely destroyed after my first Dakar Rally and then won the Enduropale again after a few days back home," he says. "Nobody expected me to win, including myself."

After that sixth-place Dakar finish in 2016 the young Frenchman became hooked on Rally racing. The following year he finished in fourth place, and then in 2018 a broken collar bone suffered in a crash knocked him out of the running. His 2019 season was cut short by further injuries, but that



A THOR rider since 2018, Rally rider Adrien van Beveren is poised to return to racing in 2020 following a few setbacks over the past year or so.

did not deter the determined rider.

He plans on making a big come back in 2020, starting with training to get stronger and rehab some physical injuries and to focus hard on his dream of eventually winning the Dakar Rally. He even attended this year's Enduropale race as a spectator, hoping to capture some of that magic that enthralled him as a child.

Parts Europe is proud to have Adrien on the team, and is super excited to have him wearing THOR gear. He still remembers the first year riding for THOR, 2018, and how much

he loved the comfort and performance of the Prime Fit riding kit. He also appreciates the brand's style and aesthetics. "It's a clear professional style," he says. "You see some details from far away, and there is one detail in a strong color and the colors match. I am really proud to ride THOR."

What about the new THOR 2020 collection? The Pulse from Dakar is his favorite gear for the season, he can't wait to get back to riding full time and really put that THOR riding apparel to the test. ■

» Parts Europe wishes Adrien all the best and a quick recovery.



Raised riding in sand, Adrien van Beveren took his youth skills and harnessed them to emerge as a back-to-back-to-back champion at the famed Enduropale du Touquet in La Touquet, France. He won the famous beach race in 2014, 2015 and 2016.

THOR rider Adrien van Beveren is at home in the sand. *Bavo Swijgers photo*





After his many successes at the Enduropale du Touquet, the THOR rider went on to tackle his ultimate dream – racing the Dakar Rally. This shift led to a new career as a Rally Raid rider.



NEW 2020

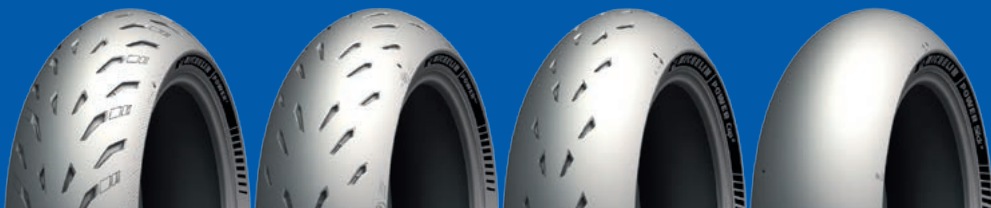
**MICHELIN
POWER
EXPERIENCE**

**MICHELIN
POWER⁵**

**MICHELIN
POWER^{GP}**

**MICHELIN
POWER^{Cup} 2**

**MICHELIN
POWER^{Slick} 2**





A quick snapshot of the Parts Europe booth before the doors opened at the 2020 MC Mässan motorcycle show in Gothenburg.

Going Off-Road in Scandinavia!

TOURING IN SWEDEN AND FINLAND

The Parts Europe event team was on tour earlier this year in Sweden at the MC Mässan motorcycle show in Gothenburg, and then travelled to Helsinki to meet with its Finnish colleagues at the MP Motorcycle Trade Fair.

Northern European countries are known for their green, untouched nature and adventurous travels into the wilderness. For the team at Parts Europe, they're also a connection to partner brand THOR, whose founder Torsten Hallman was born in Sweden.

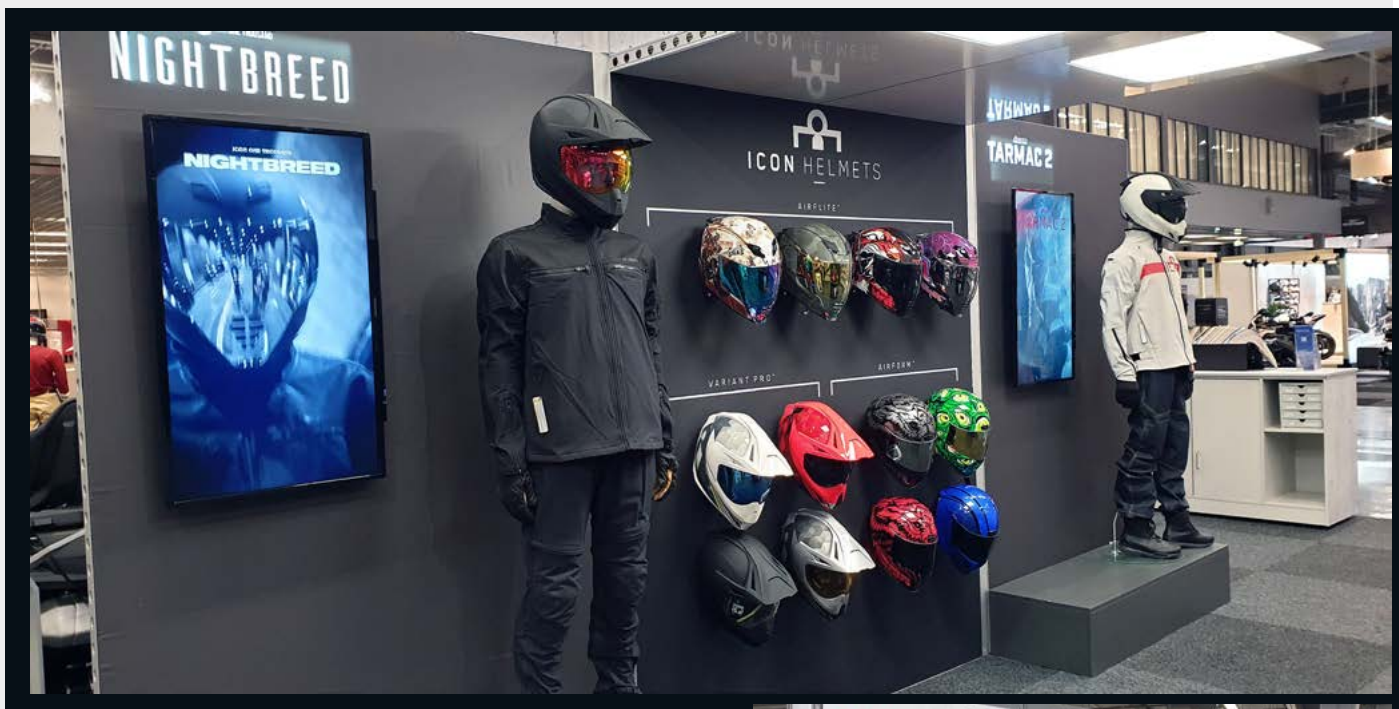
This year Parts Europe showed the new THOR Hallman collection for the first time at the Scandinavian fairs, bringing two customized bikes – a Triumph Tiger 800 XC and a 2020 KTM EXC 300TPI 2020 – to highlight THOR's off-road roots.

Triumph Tiger 800

With attending the shows in Scandinavia, Parts Unlimited used its customized Triumph Tiger 800 to introduced two new brands to the Swedish and Finnish dealers LeoVince and SW-Motech.



It wasn't all off-road at the show in Helsinki. Parts Europe opted to showcase a couple of Harley-Davidsons customized with products straight from the *FatBook* and *OldBook*.



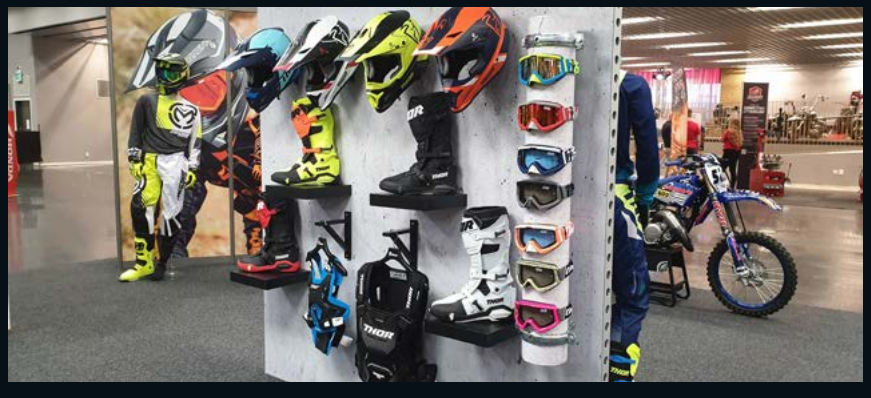
The team at Parts Europe and Swedish dealer Konsult Lidköping equipped the Tiger 800 with a LeoVince NERO Slip-on muffler, giving the vehicle an aggressive look and a certain touch of dominance and power without being obtrusive.

As the Triumph Tiger 800 XC is a real dual-sport motorcycle designed for off-road lovers (in contrast to the more road-oriented Tiger 800 XR), the bike was equipped with many SW-Motech parts that offered protection and storage capacity.

The Adventure rack allows easy lashing of luggage to the numerous large eyelets, and mounts up easily with bike-specific attachment components. The Trax ADV Top case offers 38-liter space for luggage, and protects it against theft, water and dust. If your customers need more space, they should check out the EVON Engage tank bag that is formed fitted for slightly convex fuel tanks. The bag mounts to SW-Motech's bike-specific EVO tank ring.

Mirror extensions provide a significantly improved field of vision, and the sturdy, well-designed extensions securely hold the mirrors, even when riding off-road or at high speeds. Kobra handguards protect handlebars and drivers alike in the event of an accidents or fall. The replaceable impact-resistant handguard shells provide additional protection against weather and flying debris.

At the show in Sweden, Parts Europe was sure to include a healthy sampling of all the apparel, parts and accessories that are available from the pages of its catalogs.





Parts Europe showcased a number of parts on this customized Triumph Tiger 800 XC.

Parts Europe had the Swedish motocross specialist Thorells MX build the bike and the company unveiled it at its booth in Gothenburg. The bike was equipped with an FMF Factory Fatty pipe and Powercore 2.1 Silencer, both built to provide excellent power for today's tracks that geared toward 4-stroke machines.

The KITE Elite MX-EN wheels were put together from Takasago Excel signature rims, Alpina spokes and nipples, Koyo bearings and KITE hubs. A Fusion dual rear sprocket rounded out the wheel package. The wheel setup not only helped improve performance, but also complements the KTM's styling.

The team also added a Moto Master Flame oversize floating MX front rotor with a black anodized, laser-marked carrier, lightweight stainless floaters and a stainless 270mm Flame disk. Thorells MX also opted to add Scar Racing's titanium foot pegs, brake tips and gear shift lever, all with matching titanium bolts.

Showing just what's possible with the Parts Europe catalogs and ready-to-race motorcycle, the teams at Parts Europe and dealership Thorells MX transformed this KTM EXC 300TPI into an off-road monster.



SW-Motech heel guards protect boots from the hot exhaust pipe and protects the pipe from external damages. The SW-Motech Engine Guard offers additional protection against rocks and contact with the ground for the engine. The high-quality aluminum guard not only protects, it provides unique styling when riding on the street.

2020 KTM EXC 300TPI

The KTM EXC 300TPI is called the "master of extremes" and has been at the forefront of development at the highest levels of Extreme Enduro riding by KTM. The nimble, lightweight all-terrain bike fears no obstacle and, thanks to TPI technology, runs like a beast on the open range.

A Moose Racing Pro skid plate was added for extra protection, its 6mm thick flexible high-density polyethylene providing cover for the frame and chassis. The plate is 40 percent lighter than common 4mm thick aluminum plates. Chain guide, brake pedals and CNC-machined sprockets made of case-hardened chromoly steel, are all Moose Racing, and make the KTM even more resistant and durable.

The NEKEN triple clamps and the matching radical design handlebars here come together with the Pro Grip 708 Lock-on grip that feature full diamond conical grip to provide ultimate control. The KTM's front end was finished off with a Cymra light vented front fender. ■

WE RIDE TOGETHER.

MADE IN THE
U.S.A.



MT

The American Elite with Multi-Tread (MT) technology offers passionate cruiser and chopper riders excellent grip in both wet and dry conditions, as well as outstanding mileage. So, you can enjoy the riding experience even more.

Find out more at dunlop.eu

AMERICAN  ELITE™

 **DUNLOP**

The French Connection

SPECIAL EDITION SUZUKI KATANA ICON

The Suzuki Katana Icon was introduced to the public this winter. This special edition of the new 2019 Suzuki Katana is a stunning example of bringing together old traditions, new technologies and up-to-date marketing and sales-strategies.

Suzuki teamed up with Icon to produce this special edition of the OEM's revamped classic, and plans to release only 10 units for the French motorcycle market.

Released in 1981, Suzuki's GSX-1100S Katana was claimed to be the fastest mass-production on the market, and featured a radical design that was a departure from other bikes of the time. The bike went onto a huge sales success and developed a cult following, and its design had a lasting impact on motorcycle styling.

Borrowing design cues from that original classic, Suzuki released a revamped Katana in 2019, its profile clearly paying homage to its predecessor. The new Katana GSX-S1000SM was an instant hit with the motorcycling public.

Knowing that the team at Icon knows how to turn the everyday upside down, Suzuki France, Parts Europe and Icon partnered up for a retooling of this born-again classic.

Bringing together the Japanese tradition and knowledge of engineering with Icons sense of aggressive styling, the trio started the project Suzuki Katana Icon and the new special edition of the Suzuki Katana was born

Icon designers created the special high-viz yellow branding on the flanks of the tank and the back of the Japanese beauty. Not only to the rims feature the high-viz yellow accents, by having a closer look, some special effects shine through with the engine parts as well.

The special edition bike is equipped with an Akrapovič silencer that saves 1.1 kg, and an aluminum support plate. Being it is a special edition bike, the custom machine features numbers one through 10.

Icon topped the deal with a special edition of the Icon Airflite Stim black helmet. The design reflects the bike's design, both resulting together in a well-calculated total image. The limited edition AirFlite is delivered with the purchase of the special edition Katana. ■

» *Talk with your Parts Europe sales rep to learn more about the special edition Suzuki Katana Icon.*



Verona Motorbike Expo

SHOWCASING TWO CUSTOM BIKES

The Verona Motorbike Expo offers the largest custom motorcycle show, showcasing everything from major motorcycle manufacturers, the aftermarket industry and many of the most influential custom builders worldwide.

Obviously, Parts Europe wouldn't dare miss this event. From 16th to 19th January the Italian in-house sales team, the Italian sales reps and country sales manager for Italy travelled to Verona to visit with dealers and consumers alike.

Attending the show, Parts Europe brought along two customized motorcycles from two ends of the bike spectrum as a way to showcase all the parts offered for both the metric and V-twin markets. ■



PARTS USED ON THIS BIKE:

PART#	DESCRIPTION	BRAND NAME	RETAIL PRICE € (INCL. 22% VAT)
1010-2464	AIR CLN 15SPK 17-19M8 BLK	ARLEN NESS	539,26
1801-1378	SO EC FLT M8 4.5 117 B/BT	RINEHART RACING	1.062,62
2030-1422	LIC.PLT.3IN1 W/TL BK I	HEINZ BIKES	357,80
2030-1248	LIC.PLT. CUBES M/ADAP BK	HEINZ BIKES	101,49
0801-1052	SEAT STEP UP GRPPR FLH	SADDLEMEN	639,71
2020-1480	URNSIG+PL LED TRING BK	HEINZ BIKES	193,76
0640-1348	MO-VIEW SPORT ECE	MOTOGADGET	111,75
0610-1956	LEVERS BLK SLOT FLT 17-19	DRAG SPECIALTIES	63,89
0630-1615	GRIPS CUSTOM TBW BLK PEEN	DRAG SPECIALTIES	90,34
0601-3054	HANDLEBARS V-L FLTR 15+B	TRASK	440,42
0615-0274	CLAMP HALF BLK 08-19FLT	DRAG SPECIALTIES	12,22
0414-0517	FORK SPR/CART LWR 49MM	LEGEND SUSPENSION	715,20
1310-1886	SHOCKS REVO-ARC RR 13	LEGEND SUSPENSION	1.927,49
1313-0167	MOUNT RESERVOIR EXT ARC	LEGEND SUSPENSION	315,76

Harley-Davidson Road Glide

Parts Europe partnered up with the Twin Company in Bergamo, Italy to build this custom Harley-Davidson Road Glide. This bike really emphasized what is possible with a little imagination and the *FatBook*.

The Road Glide features everything from a combination license plate holder/turn signal/brake and running light from Heinz Bikes to a matte black Dual Slip-On 4.5-inch mufflers from Rinehart Racing. There was also a REVO ARC remote reservoir FL coil suspension from Legend Suspensions, and a Saddlemen 2-up Step-Up Gripper that blends comfort with great ergonomics.

» See the included build sheet for all the parts used and part numbers.

Honda CB650 R



Parts Europe displayed a Honda CBR 650R equipped with a big package of SW-Motech accessories. The lineup includes everything from mirror extensions to the Blaze H saddlebags. Everything used for this custom-built showbike was chosen for comfort, ease of riding and convenience.

» See the included build sheet for all the parts used and part numbers.

PARTS USED ON THIS BIKE:

PART#	DESCRIPTION	BRAND NAME	RETAIL PRICE € (INCL. 22% VAT)
0641-0238	MIRROR EXTENSION	SW-MOTECH	51,20
0603-0854	UNIVERSAL X-GRIP KIT SMAR	SW-MOTECH	92,22
0505-1882	CRASH BAR	SW-MOTECH	184,49
3501-1538	SADDLEBAG SET BLAZE H	SW-MOTECH	328,02
0635-1645	HANDGUARD KIT KOBRA	SW-MOTECH	143,48
0510-0452	SIDESTAND FOOT EXT	SW-MOTECH	40,96

Parts Europe was on hand at the 2019 Custombike Show in Bad Salzuflen to help celebrate the event's 15th anniversary.



Custombike-Show 2019

HAPPY 15TH ANNIVERSARY

This year's Custombike Show in Bad Salzuflen, Germany was a very special one. One of the biggest custom motorbike fairs in the world celebrated its 15th anniversary in December and Parts Europe was there to celebrate.

The Custombike Show is huge. How huge? More than 32,000 visitors came to the small city in northern Germany to check out a show that spreads across four halls, and an area of 28,000 sqm. The show featured more than 300 exhibitors displaying their ranges of products, and showcased more than 1,000 custom motorcycles.

Parts Europe celebrated this anniversary with giving away 10 free entry tickets for the Custombike Show 2019, and by displaying some unique custom bikes for the audience.

2019 Indian FTR1200

Then custom Indian FTR1200 came outfitted with those eye-catching Grand National 2-into-2 high pipes. The true replica system has the same 3.5-inch can and Grand National endcap design as the mighty FTR 750 racers.

Gilles Tooling delivered the handlebars, levers, risers as well as a RCT10GT rear set for this Indian FTR1200. Axle protectors and the footrest covers complete the Gilles package on this bike.

Up at the handlebars, the Torker grips from Biltwell match up with the MO-Blaze disc bar-end turn signals from Motogadget. Performance gets some help from



In stock condition the Indian FTR1200 is a head turner. Put it into the hands of a custom bike builder and the Parts Europe catalogs and you get an eye-grabbing, road-ripping machine.

the Dynojet Power Commander PV3 that has been developed for the Indian FTR.

2019 Harley-Davidson FatBob

For the V-twin crowd, this 2019 FatBob was upgraded with black Rinehart Racing 4.5-inch mufflers. Deep breathing comes thanks to the S&S Cycle air cleaner and the appropriate cover AC stealth in black round it up.

There is also a Saddlemen Step-Up seat, Arlen Ness Fusion slot track grips, Motogadget Mo-View mirrors, a Memphis Shades fairing and turn signals and a license plate holder from Heinz Bikes. Foot controls are by THRASHIN' Supply Co. ■

» Talk with your Parts Europe sales rep about all of these custom bikes, and check out the FatBook, the OldBook and all those Parts Europe catalogs for all the parts used. Your customers will want to know just what's possible when it comes to upgrading their motorcycles.



With only a couple of aftermarket parts swaps, your customers can completely retool the look of their Harley-Davidson Fat Bobs.

MICHELIN COMMANDER III

NEW 2020



MICHELIN
COMMANDER III
CRUISER

MICHELIN
COMMANDER III
TOURING



Exceptional wet grip for
Cruiser and Touring bikes





SPRING 2020 **AGROID™** COLLECTION

MOOSE RACING
MOOSERACING.COM



OFF-ROAD



545X Wheels

Lower door inserts

Improving performance and reliability is the goal behind each Moose Racing product, whether it is a part for a UTV or dirtbike or even a piece of gear for the rider. Moose Racing recently debuted a range of new items available from Parts Europe in 2020, and the extensive list includes new parts, tools and gear as the company continues to supply customers with everything necessary to get off-road with confidence.

UTV Upgrades

In the UTV category, Moose Racing has introduced a number of new parts designed for performance models like the RZR 1000 and Maverick X3.

RZR owners can improve on the competition style of the vehicle with the new Moose Racing RZR seat. The suspension seat design can handle all tough terrain, especially since the frame is made from steel tubing for ultimate durability. The marine-grade vinyl finish resists the elements on the outside, while the high-quality

foam on the inside helps absorb the bumps for a more comfortable ride.

The wettest, dirtiest rides are no match for the seat, which includes a rear vented section to allow water and dirt to pass through. The RZR seat is designed for support that does not hinder maneuverability, with a short seat base and a taller backrest. The sides are low to make getting in and out easy.

Riders who want to keep the stock RZR seat but want to install a four- or five-point harness system can add the Moose Racing harness pass through bezel. This durable plastic bezel easily

PERFORMANCE!

MOOSE RACING HAS YOU COVERED



Insurgent tires



Four-point restraint system



Moose Racing's new RZR seat



Pass-through bezel

installs to provide a clean, finished look to the seat and to enable the top straps to pass through the seat without rubbing against the seat itself.

The bezel is the perfect match for Moose Racing's four-point restraint system. The harness features extra-large padded chest and shoulder straps for added comfort. Adjustment points on the shoulder and lap straps ensure a snug fit, and the single-click automotive buckle makes getting into and out of the harness easy. There is also an integrated chest buckle system to keep the shoulder straps in just the right place. A uni-

versal bolt-in or loop-over roll cage installation means that the restraint system works with all UTVs.

Moose Racing helps UTV riders tackle every type of terrain with the new Insurgent tires, which are E-mark and REACH compliant. They are designed for outstanding traction, whether it is over sand, snow, mud or rocks. The flatter profile results in a wide footprint, which provides traction not just in straight lines but also through corners. That profile is combined with radial construction and an expertly-designed tread pattern to provide more stability and confidence.

The Insurgent tires are a perfect partner for Moose Racing's 545X wheels, which fit ATV and UTV applications. Aggressive styling is paired with robust construction, and every wheel is X-rayed on the line to ensure quality.

RZR XP 1000/Turbo and Maverick X3 riders can add the new Moose Racing lower door inserts. The aluminum construction means the lower door inserts are light but sturdy, and the black powder coating helps resist corrosion. By mounting to the existing OE upper door, the Moose Racing lower door inserts install easily and do not require any drilling.

**Moose Racing
OptiMate 1 Duo
battery charger**



NOK fork and seal kit



**Hydraulic clutch/
brake bleeder**



Cable luber



Snap ring tool



MR-1 stand



Foldable chain breaker



Oil filter puller



Keeping Dirtbikes Running

The latest Moose Racing products for dirtbikes are focused on keeping a bike charged and running smoothly, with tools designed for easier maintenance so riders can get back on the bike sooner.

Moose Racing teamed up with OptiMate for a new charger that is compatible with any 12V lead-acid battery or 12.8V lithium battery. The Moose Racing OptiMate 1 Duo charger (p/n 3807-0492) has a four-step program with a low-voltage start of 4V. It tests the battery and delivers only what is needed to prevent overcharging.

Moose Racing is making fork rebuilds a little less complicated with the NOK fork and seal kit, NOK fork service kit and the NOK shock rebuild kit. Each kit includes premium-quality NOK products made in Japan.

The NOK fork and seal kit provides seals with the same level of quality and performance as the OEM replacement parts. The NOK fork service kit has both the seals and bushings, pro-

viding everything needed to rebuild stock front forks.

The NOK shock rebuild kit includes a complete pre-assembled seal head, piston band, piston O-ring, bump rubber and bladder. With the rebuild kit, there are no special tools required for assembly.

Moose Racing has a long list of new tools available, too. Items like the foldable chain breaker tool and the cable luber are designed to be compact enough that they can ride along on the trail, ready to go for any urgent repairs.

There are also some specialty tools for difficult jobs. The oil filter puller is ideal for filters that are recessed and difficult to remove. Stiff exhaust springs can be tamed with the HD spring puller, which has an oversized T-handle grip. The snap ring tool makes it easy to remove internal snap rings that are recessed as much as 50mm.

Moose Racing's hydraulic clutch/brake bleeder makes it easy to move fluid without adding air bubbles, and convenient measurements on the syringe take out the guesswork. The bleeder is also a useful tool for

extracting fluid from the fork leg or any other reservoir.

All of those tools can be put to use while a bike is sitting on the MR-1 bike stand. The lightweight aluminum stand has a black finish and side panels that are the perfect spot for adding a name, number or sponsor logos. The open framework of the stand means that it is compatible with any type of off-road motorcycle, and there is easy access for oil changes.

Get Covered with Agroid Gear

Moose Racing's Agroid graphic was so popular that it has become its own line of gear. The new Agroid line includes a helmet, jersey and pants, and it is all designed for high performance with top technology, premium materials, athletic styling and extreme durability.

The F.I. Agroid MIPS helmet features the Agroid graphics—with four different color combinations available—on top of a MIPS-equipped helmet.

The MIPS Brain Protection System (BPS) consists of a low-friction layer



F.I. Agroid
MIPS helmet



Agroid racewear



inserted between the shell and the liner of the helmet, and it is designed to help deflect energy during an angled head impact. The low-friction layer allows a slight sliding motion in all directions, which reduces the rotational motion that is transmitted to the brain in an impact. According to Moose Racing, by absorbing and deflecting some of that force, the MIPS BPS system is designed to reduce the risk of brain injury.

The F.I. Agroid MIPS has a host of additional features, too. The extra-large eyepoint allows goggles to fit easily, and a unique friction hinge visor is easy to adjust but stays securely in place once the rider finds the perfect angle. Airflow is abundant, with nine intake vents and three exhaust vents that make sure things stay cool inside the helmet. The inner liner is removable and washable to keep things fresh and clean.

The Agroid jersey and pants are Moose Racing's top-of-the-line gear. The high-performance features make the Agroid line ideal for the tough riding conditions found in racing. Meanwhile, the M1 line is a durable, all-around gear line that is at home

on both the track and trail, in competition or just out for a day of fun. The Sahara gear line is designed for maximum ventilation to provide comfort on even the hottest days, and the Qualifier is a solid entry-level gear line that does not sacrifice quality.

The Agroid jersey features a new chassis design from Moose Racing. The goal of the new styling is to provide riders with a very flexible jersey and extreme ease of movement both on and off the bike. The athletic fit is paired with a lightweight stretch polyester material that is highly breathable.

Additional breathability comes from laser-cut holes that enhance ventilation. The fabric also dries quickly, helping to pull moisture away from the skin to keep a rider dry and comfortable. The Agroid has all of the quality details one would expect in a premium jersey, including a stretch collar and non-restrictive stretch mini cuffs that keep sleeves in place without binding. The high-quality sublimated graphics will maintain their colors, wash after wash.

Like the jersey, the Agroid pants are designed for excellent flexibility so a

rider can move as easily as possible on the bike even in extreme riding conditions. The chassis begins with a lightweight durable stretch woven polyester that is topped with stretch ripstop polyester panels on the knees and seat.

The pants, which are pre-bent for an ergonomic fit on the bike, have a stretch area in the knee that allows them to fit over knee braces or guards while still providing a slim, streamlined fit. The knees also feature a double-layer system that has extended leather inner and outer knee guard panels, adding another touch of durability in critical areas.

The Agroid pants share some traits with its jersey counterpart, including laser-cut ventilation holes and non-fading, breathable sublimated graphics. A three-point waist adjustment system allows a rider to fine-tune the fit, and a YKK zipper tops off the list of perks. ■

» *Talk to your Parts Europe rep to learn about all of the parts, tools and gear available to equip UTVs, dirt bikes and riders. Learn more online at www.mooseracing.com.*



Ready for Adventure

Tires for Touring and Trail

Adventure is a word heard a lot in the motorcycle industry, but each rider defines adventure differently. Some riders want a crossover tire that offers confidence, grip and longevity on the street as well as off-road capability. Other riders want to conquer curvy country roads. And some riders think that long-distance touring is the real way to have an adventure.

Dunlop had all of these definitions in mind when building its new Adventure Touring/enduro line of tires. The new Trailmax Meridian and Mutant tires are in the enduro/crossover category for riders who want on-road performance, but also some small off-road section capability, while the SportSmart TT and RoadSmart III offer street tire options in the hypersport/sport touring category.

Trailmax Meridian

The new Trailmax Meridian is an enduro travel tire built for the demanding performance requirements of the most powerful touring bikes. It is a 90/10 on-road/off-road tire with high-tech characteristics designed to provide extreme performance, outstanding handling and increased longevity.

One area where the Meridian shows its prowess is in wet conditions. Dunlop's MultiTread technology increases traction and grip in all riding scenarios, dry or wet. A high-

silica compound provides premium wet grip and makes the tire more flexible at lower temperatures, so a rider can feel confident even on cold, rainy days. The tread design of the Meridian helps maintain traction in the wet, too, with channels that efficiently expel water.

Another benefit of Multi-Tread technology is the center compound on the rear tire, which extends under the shoulder compound to help increase the overall stiffness of the tire. That stiffness increases traction under acceleration and improves the Meridian's sporty handling.

Both the front and rear tire benefit from Jointless Belt (JLB) construction, which also increases handling capabilities. The claw-like tread pattern ensures that the Trailmax Meridian maintains traction and performance during off-road riding, too.

The Trailmax Meridian also has better mileage than its predecessor. Dunlop performed extensive testing to ensure that the Meridian lasts a long time while maintaining its performance capabilities throughout the life of the tire.

Mutant

The Mutant is a unique crossover concept that offers riders extreme performance. Because it is available in sizes 120/70ZR19 and 170/60ZR17, the Mutant is a popular



Trailmax Meridian



Dunlop Mutant

choice for bikes like the BMW R1250 GS, KTM 1290 Super Adventure or Triumph Tiger Explorer.

Dunlop designed the Mutant to be a true crossover tire that can provide all-season, all-roads versatility to over 370 different bike models, whether it is an Adventure bike, sport-touring, naked, retro or a scrambler.

Dunlop calls this fusion of innovations "4 Seasons technology," and it includes a mix of ply material, construction and compounds that have been designed to operate in the toughest of climates, including harsh winter conditions. This has earned the Mutant an official "M+S" rating, meaning it is highly suited for challenging conditions. Even on cold, wet days, the Mutant still offers outstanding grip and handling as well as shorter warm-up times.

In all, the Mutant has the handling and stability of a hypersport tire, the wet capabilities of a rain racing tire and the durability of a touring tire. The distinctive tread pattern combines aggressive-looking blocks with a dynamic directional design. This distinctive look has echoes of supermoto and dirt track tires, which means the Mutant offers both style and performance.

SportSmart TT

Dunlop is now offering the hypersport SportSmart TT tire in two Adventure Touring/enduro sizes, including 120/70ZR19 and 170/60ZR17. This tire offers premium grip and super sporty handling and feedback, especially on dry roads. That makes the tire right at home on twisty mountain roads, the race track, or any street in between.

Grip and consistency are achieved with the aid of the Speed Vent Tread (SVT), a tread groove pattern that acts like a vent, opening and closing during turning to help maintain a consistent tire temperature.

On the rear tire, NTEC RT technology allows a rider to fine-tune the inflation pressure to optimize the contact patch, resulting in increased grip.

RoadSmart III

For Adventure riders who value excellent mileage, the RoadSmart III is an ideal sport touring tire. It is available in four Adventure sizes (120/70Z19, 170/60ZR17, 110/80R19 and 150/70R17), so it is a good choice for riders who want to go the distance on a bike such as a BMW R1150 GS, Honda Varadero, KTM 1090 Adventure or Triumph Tiger 900.

The RoadSmart III is a perennial favorite among Dunlop riders. Its premium sport touring characteristics helped it become the 2018 *Motorrad* magazine touring tire test-winner thanks to attributes like an innovative tread design that enables the tire to maintain performance for a longer time. The tire also has a wear-resistant, high-performance compound designed for high mileage. Available in a standard version as well as an SP version for sportier riding, the RoadSmart III provides solid grip in the wet and dry with a unique interconnecting groove tread that disperses water quickly. Dunlop's MultiTread technology enhances both wet grip and mileage. ■

» Talk to your Parts Europe rep about Adventure riding with Dunlop and see all available fitments at www.dunlop.eu.



SportSmart TT



RoadSmart III



Power Supply

Battery Choices for Every Type of Riding

Whether it is a street bike, ATV or UTV, a vehicle needs power. Of course, when it comes to powersports batteries, there is no “one size fits all” solution. That is why Parts Europe carries plenty of battery styles that range from lithium to AGM, and from standard to extra cranking power.

Parts Europe lithium batteries are now available to give customers a lighter, simpler starting solution that requires zero maintenance. Lithium batteries do not contain any acid or heavy metals, which enables the lithium battery to be installed in any position. That placement flexibility is especially useful for custom bikes that might not have much room for a battery.

Lithium batteries are also 65 percent lighter than a lead acid battery, which can make a big difference to a racer or anyone who wants to improve fuel efficiency. The Parts Europe lead acid battery has a long shelf life but a short recharge time. A battery can sit

unused for more than a year without losing functionality, and it can quickly recharge to 90 percent capacity in only six minutes.

Both Drag Specialties and Moose Utility Division have AGM (Absorbed Glass Mat) batteries now available

Parts Europe lithium batteries give customers a lighter, simpler starting solution that requires zero maintenance. They can also be installed in any position – a great solution for custom bike builds.



through Parts Europe. AGM batteries are designed to eliminate water loss, which means the battery can be permanently sealed once it is filled with acid. An AGM battery also holds a charge for up to three times longer than a conventional battery. Superior vibration resistance and durability combine to provide a long service life. Each battery comes with an included acid pack.

The Drag Specialties batteries have flush-mount terminals specifically designed to better fit Harley-Davidson models. The four battery styles available are also powerful enough for hard-starting, high-performance engines that need extra cranking power. They are reliable on every ride, no matter how stubborn the engine might be.

In addition to better fitment, the flush-mount terminals eliminate the need for a spacer, so there is no chance of one coming loose. The terminal also provides a direct path connection to the internal element post, which increases the durability and performance of the connection while lowering the electrical resistance.

The four Drag Specialties flush-mount terminal batteries available are the YTX14L-FT (p/n 2113-0767), YTX20H-FT (p/n 2113-0714), YTX20HL-FT (p/n 2113-0715) and YIX30L-FT (p/n 2113-0716).

Meanwhile, Moose Utility Division has two new AGM maintenance-free batteries for ATV and UTV applications. Both YTX20HL-BS (p/n 2113-0477) and YIX30LOB5 (p/n 2113-0480) are heavy-duty 12-volt batteries that are able to withstand the rigors of off-road riding. ■

» Learn more about battery choices from your Parts Europe rep. You can also visit <https://partseurope.eu>, www.dragspecialties.com and www.moosetilites.com.



Parts Europe also carries a range of AGM batteries from Drag Specialties and Moose Utility Division. AGM batteries can hold a charge up to three times longer than a conventional battery.

2020-2021 OldBook™ COVER BIKE

1956 CUSTOM H-D PANHEAD BUILT BY Cabana Dan's Customs



AVON: 3-ring Air Cushioned Grips

ARLEN NESS: Telescopic Kickstand

BILTWELL: Builder's Exhaust Kit*

COLONY: Pushrod Tube Kit

DRAG SPECIALTIES: Custom Solo Seat, Front/Rear Laced Wheel Assemblies, Inner Tubes, Polished Front & Rear Brake Rotors, Teardrop Tool Boxes, Fat Bob®-Style Fuel Tank, 3-Light Dash Cover & Base, 2-1 Mini Speedometer, Universal Ignition Switch, Hydraulic Brake Light Switch, 49-Tooth Rear Sprocket, 530 O-Ring 120-Link Chain

KLOCK WERKS: WFB Benchmark Front Fender, Builder Series Stretched Frenched Rear Fender, License Plate Frame

LA CHOPPERS: Riser Kit for Paughco Springer

PAUGHCO: Big Twin Rigid Wishbone Frame & Rear Axle Kit, Leaf Spring Front End Assembly, Transmission Mounting Plate, Oil Tank Assembly

PIRELLI: MT66 Front & Rear Tires

PERFORMANCE MACHINE: Throttle Housing, Grille LED Headlight

S&S: Super E Shorty Carburetor*

Check out more details on this bike at various rallies and events throughout the year; or log onto dragspecialties.eu/bike-builds to view the complete parts list.

FROM OUR GARAGE TO YOURS

DRAG
Specialties

dragspecialties.eu

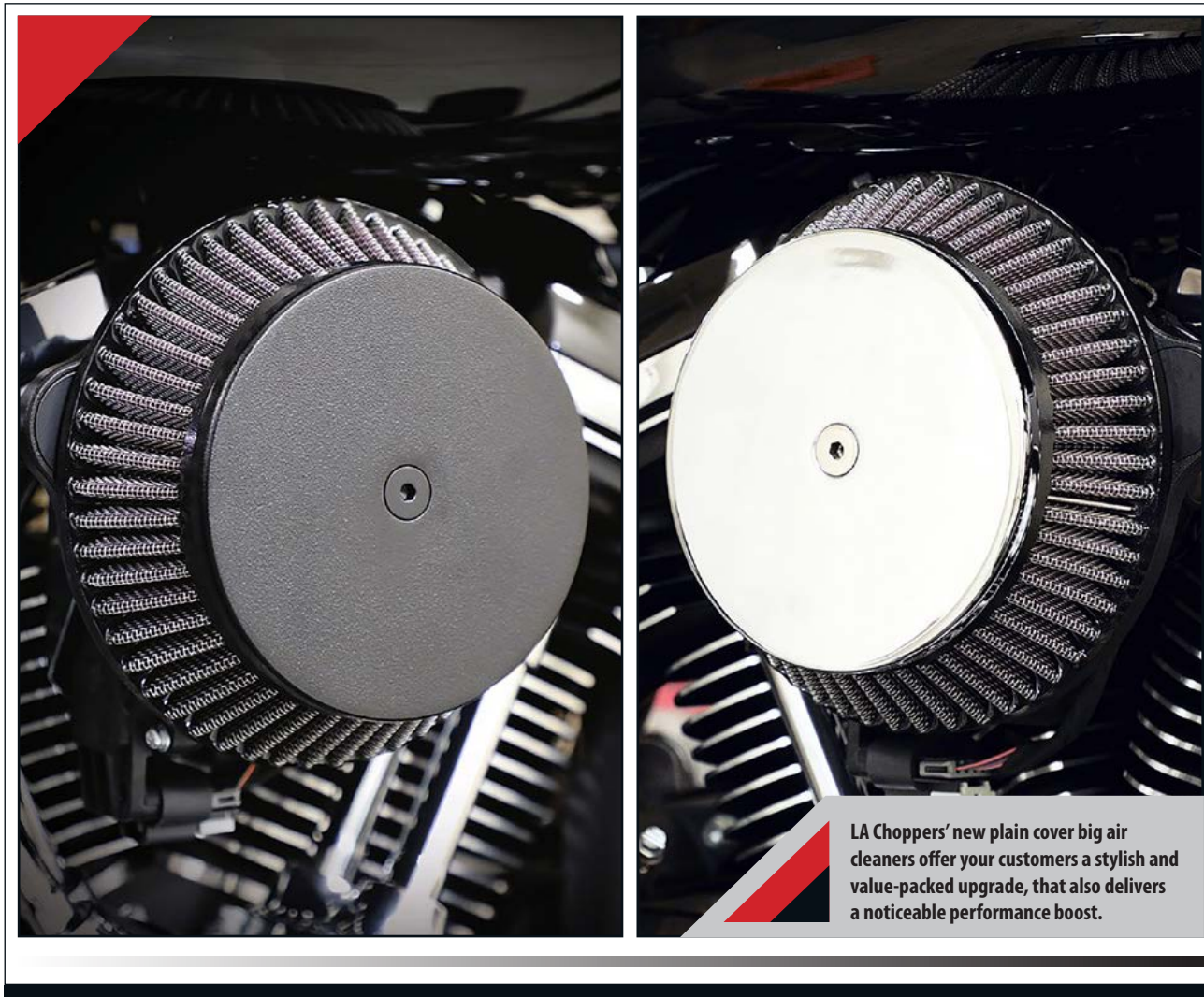
PARTS
EUROPE

partseurope.eu



Value and Performance

Sleek, Stylish Air Cleaner Kits



LA Choppers' new plain cover big air cleaners offer your customers a stylish and value-packed upgrade, that also delivers a noticeable performance boost.

When it comes to V-twin riders, there are usually three regular upgrades they make with a new bike – swap out the stock bars for aftermarket handlebars, remove the OE exhaust in favor of performance pipes, and add a high-flow air cleaner to really allow that engine to breathe.

Each of these upgrades can make a huge difference with the look, sound and performance of a Harley-Davidson, and all can be done economically. This is why the folks at LA Choppers decided to introduce a high-quality, high-performance, great looking air cleaner that comes in at a great value.

Most people know LA Choppers as a premium handlebar company, but the company actually has an extremely wide breadth of products that it offers in addition to that big range of handlebars. This includes high-flow air cleaner kits, which they have been manufacturing in their Huntington Beach, California, USA facility since the early 2000s.

Now LA Choppers has a new air cleaner kit that comes with an aluminum backing plate that is designed to significantly increase the air intake velocity. Paired together

with a K&N® air filter, your customers should expect to see a boost in horsepower and torque.

The kit also comes with a billet aluminum cover that is available in either chrome or black powder coat. Let your DIY customer know that installation is a breeze. The company says that by using the supplied hardware and a few tools, most riders can have one of these installed in about 20 minutes.

In addition to performance and looks, this air cleaner kit also provides the rider with a significant increase in legroom. Many customers know the spacing issue with the stock air cleaner. At only 63.5mm (2½-inches) wide, this kit was specifically designed to increase rider legroom and comfort.

Fitments are available for most all Harley-Davidson models, including Milwaukee-Eight Baggers and Softails, Twin Cam Baggers, Softails and Dynas. There are also models available for 1991-current Sportsters. ■

» *Talk with your Parts Europe sales rep for details and check out www.lachoppers.com for more information.*

RAISING THE BAR



GRANDE TWIN PEAKS HANDLEBARS

COMFORT STYLE SUPPORT

12" GRANDE TWIN PEAKS SHOWN ON A 2019 STREET GLIDE #0601-4621

EXCLUSIVELY
**PARTS
EUROPE**
DISTRIBUTED BY:

COMPLETE CABLE KITS
CLUTCH LINES & CABLES THROTTLE / IDLE
BRAKE-ABS / NON-ABS ELECTRICAL EXTENSIONS

HANDLEBARCABLES.COM
TO SEARCH CABLE FITMENTS FOR YOUR MODEL





PARTS PARTS PARTS
UNLIMITED EUROPE CANADA

PARTSEUROPE.EU | SALES@PARTSEUROPE.EU



WE LIVE FOR FIRSTS.

Dylan Ferrandis performed at an elite level and claimed his first 250 Supercross Championship last season. As Dylan gears up to defend his title, THOR provides the performance and innovation champions rely on to reach the next level. Our new Prime Pro gear is purpose built to take you beyond. The First. The Forever...

THOR[®]



The Pro Racer's Choice

Gearing Up with Red Bull Factory Team KTM



The Red Bull KTM Factory MXGP race team has joined with THOR for a new, two-year sponsorship with riders Jorge Prado (left) and Antonio Cairoli (right). *Juan Pablo Acevedo photo*

The Red Bull KTM Factory MXGP race team has joined with THOR for a new, two-year sponsorship. Team superstars Antonio Cairoli, nine-time FIM Motocross World MXGP Champion, and Jorge Prado, two-time FIM MX2 World Champion prodigy, are now outfitted by THOR.

"THOR is such an important brand," says team manager Claudio De Carli. "It's a leading, successful company and we are proud to have THOR on our side."

Claudio De Carli isn't alone in his assessment of THOR, or in recognizing THOR's unwavering commitment to motocross. Look anywhere in the sport where off-road competition is taking place and you'll see top riders and teams choosing THOR. In MXGP definitely, THOR is there, as well as in the EMX Series, and in just about every AMA event in the USA, on both two-wheels and four.

"We're proud to now have the DeCarli Factory KTM Team with us for the 2020 and 2021 seasons," says Hylton Beatie, Parts Unlimited Global Motorsports Director. "Claudio

De Carli and his highly competent team will be a huge addition to THOR's already-strong World Motocross program. The Red Bull KTM Factory MXGP Race Team with riders Antonio Cairoli and Jorge Prado will enable us to win even more motocross titles in the future."

Pit Beirer, KTM motorsport director, is just as enthusiastic about all of this. "Claudio is one of the most experienced and respected people in the MXGP paddock," Beirer says. "He's rewarded us both with a lot of success and we are very happy that we can now develop our relationship even further. With Claudio and his team, we have a group of professional, experienced people and this definitely puts us on track for even more success."

The FIM Motocross World Championship is as big-time as it gets and now with the DeCarli Factory KTM Team, THOR is once again right in the thick of it. There's a lot of exposure here, and it happens on one of the biggest stages in the sport. All those flashy, new-for-2020 THOR colors and designs, the feature-packed racewear those KTM riders and other racers are wearing, won't go unnoticed.

As a nine-time FIM Motocross World MXGP Champion, Antonio Cairoli knows his way around the top of the podium.

Juan Pablo Acevedo photo.



Two-time FIM MX2 World Champion Jorge Prado is making his MXGP premier class debut flying the THOR banner. *Taglioni S. photo*



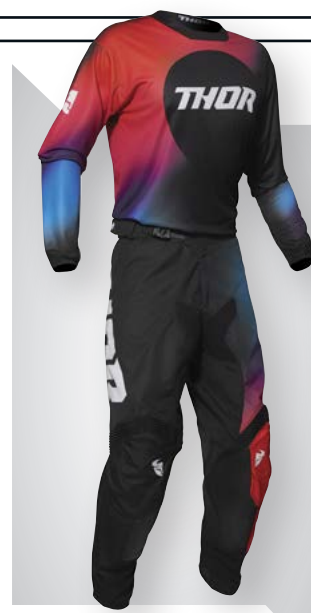
Let your customer know that the same gear their favorite MXGP riders – champions like Cairoli and Prado – are wearing is available directly to them and Parts Europe has it. With new looks, new colors, new graphics and new styles for those popular Prime Pro, Pulse and Pulse Air racewear kits, THOR is geared-up and ready for 2020 and 2021 and all the off-road action, both on the track and on the trails.

THOR also has a new lineup of feature-packed Sniper Pro goggles. These goggles come equipped with lots of new performance features and are available in a wide choice of new colors and graphics. And, in really exciting news there also the new Radial Boot, a technically advanced off-road and racing boot that is packed with features. Three years in development, the Radial Boot delivers a level of functional performance that'll meet the high demands of modern motocross and off-road riding. ■

» Talk with your Parts Europe sales rep for details and get more information at www.thormx.com.



Prime Pro



Pulse

Let your customers know that the very same THOR gear worn by champions like Cairoli and Prado is available directly to them and Parts Europe has it.



Performance Minded Race-Level Oils and Fluids



Castor 927 2-stroke oil

Chain Wax

Extra 10W-40 4T Engine Oil

For more than 40 years, Maxima Racing Oils has worked with top factory race teams and OEMs to develop high-quality lubricants and fluids that meet the high-performance demands of riders around the world.

The result is a lineup including everything from 2-stroke and 4-stroke engine oils to high-performance suspension fluids, specialty chain lubricants, air filter treatments and even maintenance aerosols. All of these products are used by professional and amateur athletes to rack up championships in everything from motocross and enduro to road racing.

All of these products are now available through Parts Europe, and if you aren't yet familiar with Maxima Racing Oils, now is the time. There are so many products to choose from, one example being Maxima's Extra 10W-40 4T Engine Oil. As a full-synthetic, triple-ester 4-stroke engine oil, this product delivers maximum performance with maximum protection under the most severe racing conditions.

Maxima Extra 10W-40 4T Engine Oil combines a custom-formulated blend of exotic esters, regenerative polymers

and an advanced additive package to deliver high levels of engine, clutch and gear protection. It offers an incredible level of hardware protection for even the most aggressive riders. The formulation is shear stable, the regenerative polymers maintain oil viscosity and film thickness, and the oil's surface-active chemistry aggressively clings to engine surfaces and keeps them clean while enabling maximum power production. This 4T oil also ensures smooth clutch operation and shifting, a benefit that both racers and performance-minded street riders can take advantage of.

Anyone in the market for 2-stroke oil will like what Maxima's Castor 927 brings to the game. As the very first product developed by Maxima in 1979, Castor 927 is still the highly regarded, championship winning 2-stroke oil that it was from the start. A unique, castor-based oil, it provides exceptional protection while reducing carbonization and vaporization. The surface-active esters combined with a highly refined castor oil base provide excellent film thickness.

Castor 927 also helps to protect cylinder walls, bearings and all other critical components. Its proprietary, ash-free



Foam Filter Treatment

Racing Fork Fluid

SC1 New Bike in a Can

additive system keeps those 2-stroke engines clean and free of gum, corrosion and power-robbing deposits.

At Maxima, it isn't just all about engine oils. There are numerous specialty lubricants, coatings, and treatments as well. The 5WT Racing Fork Fluid, for instance, is a mineral-based racing fork oil for both high-performance cartridge and standard-type forks. The shear stable, high-viscosity formulation maintains film strength, utilizes proprietary anti-wear chemistry and reduces wear. 5WT Racing Fork Fluid conditions, seals, and prevents stiction, foaming, and air entrainment, while keeping fork internals clean and corrosion-free.

This Southern Californian company also offers top quality air filter oils and chain lubricants. The race-proven Foam Filter Treatment, FFT, catches dirt and fine dust without restricting airflow, and it won't plug-up foam cells or migrate off the filter. It's water-resistant and also resists washout from carburetor fogging. The formula is dyed dark blue to ensure ease of visibility and even coverage on all filter surfaces.

Maxima's Chain Wax, a high-performance chain lubricant for X-, Z- and O-ring chains, is just as good. An

exclusive Parafilm™ formula, it sprays on as a liquid, penetrates deep and sets up a soft waxy film, forming an excellent lubricant. This formula also protects chains from rust, corrosion and the elements. Chain Wax won't fling off or attract dirt, and it's perfect for both street and off-road applications.

Not to be overlooked, Maxima's SC1 high-gloss coating New Bike in a Can is an aerosol that quickly restores factory shine and color to a wide variety of surfaces. Specifically formulated to protect and beautify multiple surfaces, it's safe for use on gloss or matte plastic, vinyl and carbon fiber. It can be applied to any surface and left untouched, or it can provide a base to be buffed to a dry sheen for a long-lasting luster that won't attract dirt, dust or road debris. It's water-resistant, restores factory shine and color, and it's excellent for use on plastic fenders. An outstanding mud and rubber deflector, SC1 makes the cleanup process much simpler and a lot more fun. ■

» Talk with your Parts Europe rep for details and check out www.maximusa.com.



Battling Mother Nature

Staying Comfortable on Every Adventure

Adventure gear is as much about guarding against nature as it is about guarding against unexpected encounters with the ground. The new Icon Raiden line helps Adventure riders armor themselves against both.

Icon recently introduced its new Raiden line, with a collection that includes a matching jacket and pants as well as a complementary glove. Each piece meets the rigorous standards for Icon's Waterproofing Level 3, which is certified to keep a rider warm and dry during the most inclement weather. All three pieces come in sizes S-3XL.

The Raiden jacket and pants both begin with a Dupont three-layer nylon shell that is both waterproof and breathable. Waterproof zippers and fully seam-sealed taping help battle the elements, too. The 500D Cordura nylon in the impact zones adds an extra layer of tarmac resistance. By choosing superior materials, Icon is able to offer gear that has minimal bulk and maintains a wide range of motion, while still providing weather adaptability and warmth on those cold riding days. Color options for the jacket and pants include gray/hi-viz or black so a rider can be wildly conspicuous or stealth.

The Raiden jacket comes equipped with a full D30 impact protector package for the shoulders, elbows and back. It also has reflective detailing for added visibility. The fit can be tailored via the hook-and-loop side, collar and wrist adjustments. A stretch cord on the biceps allows a rider to tighten everything down to prevent flapping at speed. Seven pockets ensure that the Raiden jacket has places to stash plenty of trail supplies.

For warmer days, the Raiden jacket has a stretch-cord expansion intake ventilation system that pairs with the exhaust ports to prevent moisture buildup and overheating. Riders can battle cold weather with a removable insulated liner. As a bonus, the liner can be worn by itself, too.

The Raiden pants also have an array of technical elements to make them resistant to the weather. The lower-leg hook-and-loop adjustments have a waterproof gutter system, and the full-leg YKK zippers are completely waterproof. DuPont Kevlar inner leg panels guard against heat and abrasion.

Icon's overpant fit means the shell is cut generously enough to fit over normal pants, but they can be worn alone, too. Removable, adjustable bibs add to the fitment possibilities. Reflective paneling adds a hit of visibility, while the D30 impact protectors in the hips and knees are designed to take a hit. Cargo pockets and top leg vents make the Raiden pants even more functional.

The Icon Raiden gloves combine warmth and waterproofing – the PrimaLoft insulation keeps out the cold, and the Hipora liner keeps out water. D30 knuckles add reinforcement but not bulk. The Raiden gloves have a tough textile chassis combined with an Ax Laredo palm. The material has advanced stretch and recovery characteristics to provide a snug and contoured fit while still maintaining durability. ■

» *Talk to your Parts Europe rep for more details on Icon's Raiden line for Adventure Touring, and check out www.rideicon.com for more.*

Icon's new lineup of Raiden gear is certified to keep riders warm and dry during the most inclement weather. It also features plenty of pockets and a range of D30 impact protection.





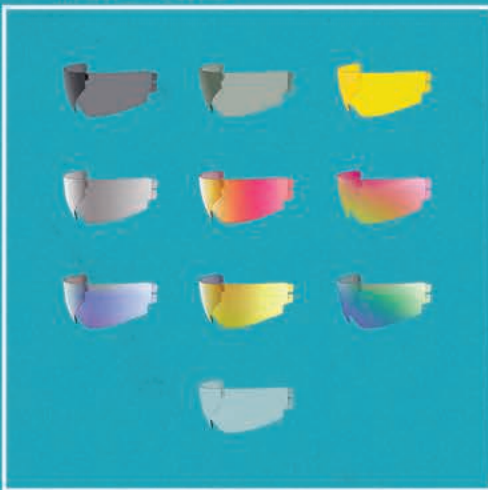
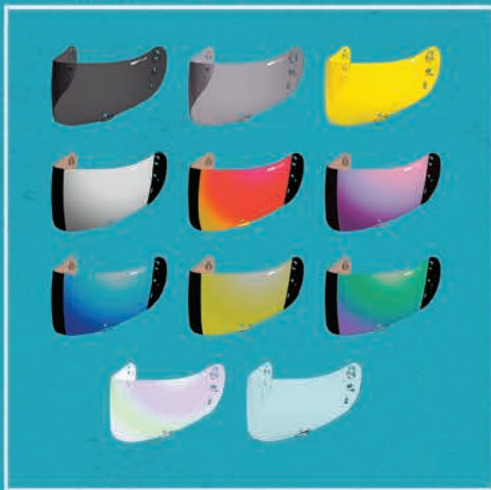
icon

CUSTOMIZE YOUR AIRFORM™ HELMET

ICONOPTICS™ SHIELD
AVAILABLE IN 11 COLORS

DROPSHIELD™
AVAILABLE IN 10 COLORS

REAR SPOILER
AVAILABLE IN 7 COLORS





Small Bikes, Big Performance

Two New T-6 Systems



As part of Pro Circuit's T-6 family of exhausts, these new mini-moto systems are built to add power and performance for the new small-displacement Kawasaki and Yamaha models.

At Pro Circuit, improving the performance of dirt-bikes, both big and small, is what it's all about. The company has a lineup of pipes and silencers to make all of those bikes a whole lot more fun to ride, whether they're 450cc motocross machines or those youth-sized small-displacement bikes.

Two of the newest additions here are a pair of mini-moto exhaust systems for a couple of those bikes aimed at riders getting their first taste of dirt riding, the Kawasaki KLX110 and the Yamaha TT-R110E. For the Kawasaki there is the T-6 system for the 2010 through 2020 models, and for the Yamaha the applications cover all the 2008 through 2020 bikes. The applications might be mini-moto for these two new systems but there's nothing entry-level about either one of them.

These genuine T-6 stainless steel exhaust systems are Pro Circuit through-and-through, and both come with everything a young rider could want. Just as the Pro Circuit Ti-6 Pro systems increase performance for the top bikes in off-road racing, these two new T-6 systems will have a mini-moto machine running and performing its best.

All the same designs, features and benefits as the standard-sized Pro Circuit T-6 stainless steel exhaust systems are here, just designed to fit those smaller Kawasaki and Yamaha models. There's maximum performance, big boosts in horsepower and torque, an undeniably cool look, a great sound, and plenty of durability.

Like all Pro Circuit T-6 systems, the mini-moto T-6s start off with a stainless-steel head pipe. There's a brushed-aluminum canister with an asymmetrical configuration allowing for increased packing volume, and all this is topped off with a carbon-fiber end cap and a USFS-approved spark arrestor.

Completely TIG welded and built with a strong mounting bracket for increased strength and durability, the mini-moto T-6 is an ideal exhaust for both general off-road riding and closed-course racing. The power delivery here is precisely what's needed to get a new rider off on the right foot while upping the fun factor for the more experienced. ■

» *Talk with your Parts Europe sales rep for details and get more information at www.procircuit.com.*



JUSTIN **BARCIA**
Photo: Octopi Media



AARON **PLESSINGER**
Photo: Octopi Media

PROUD TO SUPPORT THE **blU** *CRU*

Since 2016, Pro Circuit has fitted the Monster Energy/Yamaha Factory Racing Team bikes with high-performance exhaust systems that have taken riders to the top step of the podium. 2020 has been no different as Justin Barcia and his Pro Circuit backed YZ450F kicked off the A1 opener with another victory. When it comes to top-level performance, Barcia and Plessinger look to the best to deliver the horsepower.



T-6 FRD
TITANIUM EXHAUST SYSTEM
2020 YZ450F



T-6
TITANIUM EXHAUST SYSTEM
2020 YZ450F



T-6 EURO
TI/STAINLESS EXHAUST SYSTEM
2020 YZ450F



T-6
STAINLESS STEEL EXHAUST SYSTEM
2020 YZ450F



T-6 SLIP-ON
STAINLESS STEEL
2020 YZ450F

CONTACT YOUR LOCAL PARTS EUROPE REPRESENTATIVE TODAY!

**PARTS
EUROPE**

FOLLOW US

[PROCIRCUIT78](#)

[PROCIRCUITING](#)



[PROCIRCUIT.COM](#)

CLYMER



Information for the Masses

Shop Manuals Now Available

If you or your customers have spent any amount of time on internet forums, then you've no doubt observed a senior member respond to a new rider's question about tire pressure, oil viscosity, or chain slack with the advice, "Read your owner's manual."

While this is excellent advice, the factory owner's pamphlet only covers the absolute basics. For those do-it-yourself customers who want a deeper, more comprehensive understanding of their vehicle's function, maintenance and repair, they can't do better than reading a workshop manual from Haynes or Clymer.

manual range established in 1960. Clymer service and repair manuals were a development of Floyd Clymer's existing motorcycle and automobile publications, which first appeared as small books and pamphlets in the Los Angeles, California, USA area during the hot-rod craze of the 1960s.

Whether Haynes or Clymer, the content is aimed at your home-mechanic customers, and enables them to carry out servicing, repairs and fault finding on their vehicles. This has the potential to drive parts and accessories sales, plus leads to a greater understanding and appreciation



The Haynes and Clymer manual collection form a comprehensive library of model-specific, detailed motorcycle manuals. These workshop bibles feature everything from torque settings and tolerances to exacting details on engine disassembly and re-assembly.



In addition to the range of model-specific workshop manuals, there are also a number of Haynes general knowledge tech-books.

Based on a complete teardown and rebuild of the subject machine, each model-specific manual meticulously details the disassembly, inspection and reassembly of every component and system on the bike. Torque settings, specifications, tolerances and all other pertinent information are provided in tables, while abundant photography and clear instructions illustrate working methods and alternatives to dealer service tools. It's like having an expert on a given model right there at your fingertips.

For nearly 50 years, Haynes and Clymer manuals have been the go-to source for reliable, accurate information for home mechanics. When these two DIY powerhouses came under one roof in 2013, it created a comprehensive library of motorcycle manuals, more than 200 of which are now offered by Parts Europe.

The first Haynes motorcycle manuals appeared in the UK in 1973 and adopted the in-depth style of the car-

for the work your techs do if and when your clients opt to let the pros tackle the project.

New and updated manuals are released every year in response to market demand, but since creating each manual is a 6-month to 12-month process, authors focus their efforts on the most popular makes and models. Motorcycles, scooters, ATVs and side-by-sides are covered in both ranges, though broadly speaking the Haynes range focuses on streetbikes and scooters, whereas the Clymer range has good coverage of cruisers, dirtbikes and ATVs.

Besides model-specific manuals, the Parts Europe range includes a number of Haynes "how it works" tech-books. Just like the repair manuals, these general-knowledge books are composed in an encyclopedic fashion, ensuring a complete education on the topic at hand. ■

» For a full rundown of available manuals, speak with your Parts Europe sales representative, and visit www.haynes.com or www.clymer.com.



Tactical Touring Rugged New Luggage Line



Accessibility is key while out on the road, and Saddlemen has designed the pouches and pockets on the tactical range for easy in-and-out access.



The tactical luggage is designed to be super functional, with wide openings for easy access, plenty of accessory pockets and pouches, and D-rings and MOLLE webbing for attaching accessories or connecting bags together.

Saddlemen has expanded its luggage line with a new tactical series of bags. With modern design cues, a range of sizes and multiple placement options, the tactical bags are ready to ride in just minutes, mounting easily to everything from touring bikes to sportbikes.

Customers will know with just a glance that these are not traditional motorcycle bags. Water- and UV-resistant 1200D fabric is used instead of leather, offering a sturdy, long-lasting synthetic alternative. There are also no shiny bits on these bags: all of the hardware, including the Saddlemen badge, is blacked out for a sleek look.

Outside, MOLLE webbing and strategically-placed D-rings provide a lot of options for strapping two tactical bags together or for attaching other accessories. The options are virtually limitless.

Inside, Saddlemen has included reinforcements to each tactical bag so that they hold their shape even when empty. They won't sag or flap no matter how little gear is packed inside. Wide openings for the main compartments, accessory pockets, pouches for electronics as well as easy mounting and carrying options are all taken into careful consideration.

The tactical bags are designed to fit a wide range of riding styles, and there are mounting options for racks, rear packs, sissy bars, tails and passenger seats. Typically, a bag will not require any tools to install. Strong, built-in straps make mounting quick and effortless. A lock can be used with the zipper pulls for extra security. Each bag comes with a waterproof cover that stows easily inside a pocket.

At a glance, the naming system for the nine tactical bags might seem random, but it is actually a guide to the size and placement for each bag. The first one or two letters designate where the bag goes – an "S" bag is compatible with a sissy bar, for example. The numbers that follow indicate the size of the bag in cubic inches. So, the BR3400 tactical bag is designed to mount on a back rest, and it has a storage capacity of 3,400 cubic inches (55.7 liters).

The BR3400 tactical back seat/sissy bar bag is actually quite versatile, and it is already a popular product with customers. It can mount to the seat, luggage rack or sissy bar. The big main compartment will accommodate a full-face helmet plus other cargo, and there is a padded laptop pocket for riders who need to get a little work done. Six external pockets let a rider stow smaller items. An adjustable backrest pad will help a passenger stay comfortable. Removable backpack straps let a rider carry the BR3400 with ease.

Saddlemen's biggest tactical bag is the R4100, which Saddlemen engineered for long-distance riding. The shape means it will even fit between a rider and a TourPak or rear case, and multiple rings enable a variety of mounting configurations. There are four exterior pockets, and in the main compartment, an adjustable bungee net keeps items in place. Removable backpack straps offer an additional carrying option. ■

» Talk with your Parts Europe sales rep for details on the full range of tactical bags from Saddlemen and learn more at www.saddlemen.com.



Your customers will like the added security of being able to put a padlock on the black zipper pulls to further safeguard their property.



Full Coverage Four-Wheeler Bumpers and Lights



Moose Utility Division is now carrying a full range of front and rear bumpers for ATVs and UTVs. The strong, durable bumpers have a simple bolt-on design so that no drilling is necessary.

Moose Utility Division has a lot of new parts available this spring, with everything from little but mighty parts like a hub clutch to bigger items like cargo storage. Some of the most significant parts that are now in stock at Parts Europe are front and rear bumpers for both ATVs and UTVs as well as a broad range of LED headlights and taillights.

It has been a while since Moose Utility Division had any bumpers in its lineup, and now there are plenty of front and rear fitments for ATVs and UTVs. The ATV bumpers are made from 38mm tubular steel and the UTV bumpers are a bit thicker, measuring in at 44.5mm.

The strong, durable bumpers have a simple bolt-on design so that no drilling is necessary to add this extra line of defense against nature. There are multiple frame mounting points to make sure the bumpers are secure even during the toughest rides.

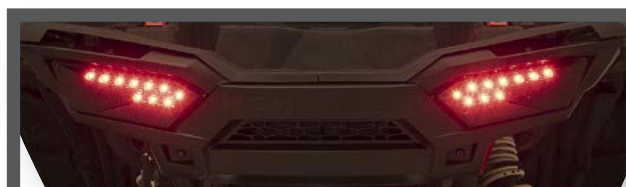
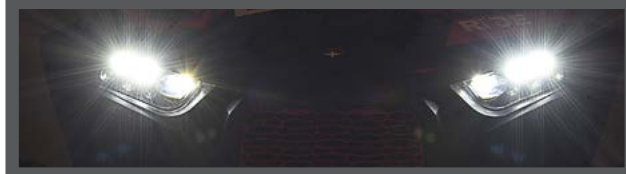
The full-coverage styling of the bumpers gives riders confidence that their frame and bodywork are well guarded, while the black powder coating on the bumpers themselves means that the steel is tough and weatherproof. Honda bumpers come in a gloss finish, and the Yamaha applications have a wrinkle finish.

While bumpers are making their return to the Moose Utility Division lineup, LED lighting is all-new for the brand. Can-Am and Polaris UTV models can now get a significant lighting upgrade with the Moose Utility Division LED headlights and taillights. Designed to replace stock halogen lights or existing LED lights, these lights provide brilliant illumination and long life. Not only will they light the trail ahead better than halogen bulbs, but they also add a touch of style to the vehicle.

There are also a variety of styling and finish options available for the lights. In addition to color choices of chrome or black for the housing, some applications also have the option of an additional LED halo for added illumination.



Can-Am and Polaris UTV models can now get a significant lighting upgrade with the Moose Utility Division LED headlights and taillights.



LED taillights



Blacked out lenses are another available option for some models.

Another new LED lighting solution from Moose Utility Division is a license plate bracket with molded-in LED lighting. The lightweight ABS bracket has a low-profile design to fit snugly onto a vehicle, and it mounts easily with included hardware plus power and ground wire leads. ■

» You can talk to your Parts Europe rep to learn more about Moose Utility Division's new bumpers and lights. Visit www.mooseutilities.com to see all of the new parts in stock.

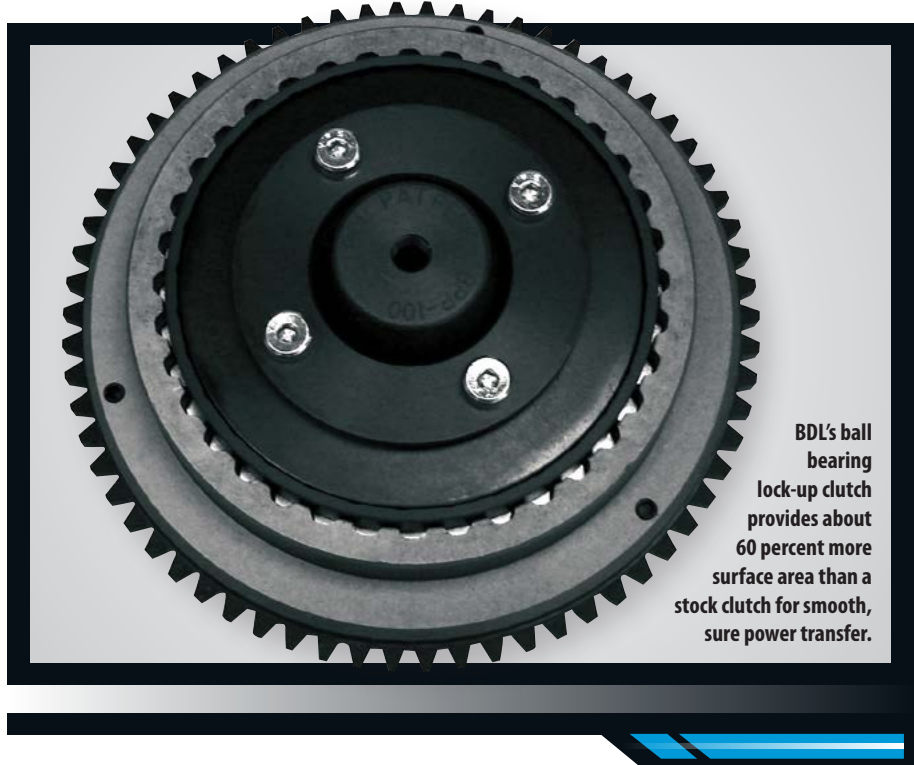


Power Boost High-Horsepower Clutch Upgrades

BDL's ball bearing lock-up clutch, a clever design with multiple Harley-Davidson applications, provides strong, slip-free, lock-up performance. It's standard with many of BDL's belt-drive primary sets, and is available separately as a complete clutch assembly. The ball-bearing pressure plate and diaphragm spring are even available by themselves for retro fitting to most early BDL clutch units, Primo Pro clutches and Harley-Davidson OE clutches.

The ball bearing lock-up clutches incorporate a number of steel ball bearings set into a model-specific diaphragm assembly. In operation the steel balls ramp-up in their individual pockets as engine rpm increases to generate greater and greater pressure on the clutch pack.

Lever control can remain smooth while clutch performance becomes slip-free and lock-up positive. It's a rider-friendly combination that's made the BDL ball bearing lock-up clutch a popular upgrade.



BDL's ball bearing lock-up clutch provides about 60 percent more surface area than a stock clutch for smooth, sure power transfer.

The HHP kits come with a selection of new, carbide ball bearings and a new diaphragm spring. The ball bearings are heavier and harder than the standard ball bearings, and the diaphragm spring is extra heavy-duty. The combination of the stiffer spring and harder, heavier ball bearings produces more pressure onto the clutch-plate to reliably harness the output of a high-horsepower engine.

There are four HHP Kits to choose from offering two different sizes of carbide ball bearings, and two different quantities of them to go with the new, stiffer spring. If the ball bearing lock up clutch being upgraded has 32 ball bearing pockets it takes the $\frac{3}{8}$ -inch diameter bearings.

If the pressure plate has 42 pockets it will use the $\frac{5}{16}$ -inch diameter bearings. There are also different options depending how much extra clutch pressure is needed. ■

» Talk with your Parts Europe sales rep for details and check out www.beltdrives.com.

When your customers are increasing their V-twin horsepower into the 120-plus range, BDL's High Horse Power upgrade for its ball bearing lock-up clutch helps the clutch handle the extra power.



As good as all this is, when the horsepower really jumps up on a V-twin into the 120-plus range, BDL has an upgrade package to make the strong grip of a ball bearing lock-up clutch even stronger. It's the HHP (High Horse Power) upgrade and it's able to handle all that extra power. It's easily installed and available for all models of the ball bearing lock-up clutch.



Protective and Stylish

New Gear for Road or Track



The GP Plus R v3 leather jacket comes in men's and women's versions. It's packed with all the performance-minded and protective features your customers expect from Alpinestars.



Faster-3 Rideknit shoe

Alpinestars new range of motorcycling garments feature a number of new additions to its street line-up, perfect for riders to enjoy on the road or on the track.

The new additions include the GP Plus R v3 leather jacket, a premium full-grain leather jacket fully optimized for track and performance riding. Available in men's and women's versions, the GP Plus R v3 leather jacket is anatomically profiled to ensure excellent comfort and a performance fit. Packed with track-tested protection such as Alpinestars Nucleon Flex Plus armor on the shoulders and elbows for superior impact protection, this jacket is equipped with stretch panels on the shoulder and back for an optimized fit.

Other thoughtful touches include a low profile collar with soft edging and 3D mesh inner comfort fabric for enhanced rider comfort, two zippered hand pockets, two inner pockets, and an inner waterproof document pocket for safe and secure storage. There is also zippered ventilation for improved airflow.

The Faster-3 Rideknit shoe is a genuine motorcycling first from Alpinestars. Featuring new performance innovations adapted from decades of R&D experience in the highest level of motorsports, the Faster-3 shoe utilizes a seamless knitted construction to create a riding shoe that is extremely lightweight and breathable, and also boasts great protective features, both inside and outside.

Designed for maximum rider comfort, the Faster-3 Rideknit has strategically positioned air vents for optimum airflow and padding on the collar and tongue for superior comfort and fit around the critical ankle and instep zones. The extremely lightweight, specifically compounded, rubber sole provides textured grip, excellent absorption and features an integrated support shank for enhanced sole rigidity.

This shoe, which is available in men's and women's versions, also delivers great rider protection thanks to the medial dual density ankle protectors. They are applied between the upper and padded lining to provide strategic protection and flexibility in key areas. The enhanced TPU ankle is extended into the lower lateral area to provide enhanced support and protection.

The Faster-3 Rideknit Shoe is equipped with a traditional lace closure system for an easy, secure and comfortable fit, and a lateral adjustable hook and loop closure system with TPR strap for increased security.

According to European statutory law the CE mark is a conformity requirement for the marketing of this product. The following standards apply to this product: CE Category II PPE Regulation (EU) 2016/425 – AA class; CE Level 2 EN1621-2:2014

Alpinestars Nucleon back protector, available as an accessory upgrade; CE Level 1 EN1621-1:2012 Alpinestars Nucleon Flex Plus shoulder and elbow protectors.

The Faster-3 Rideknit Shoe is CE-certified to EN 13634:2017. ■

» Talk with your Parts Europe rep for more details and check out www.alpinestars.com.



Rugged Riding Gear

Introducing the Venture R

Alpinestars new range of technical Enduro riding gear boasts an array of features taken straight from the company's involvement in dirtbike racing. They've created stylish products that blend race-proven protection with everyday functionality and comfort.

The Venture R jacket typifies this approach. Developed and tested in grueling conditions such as the Dakar, the Venture R Jacket is highly robust and durable with reinforced stitching, a rip-stop poly-fabric main shell for excellent abrasion resistance with an incorporated water resistant treatment for improved weather performance.

This jacket also features elbow and shoulder reinforcement for additional abrasion resistance, and is optimized for use with Alpinestars' Bionic Neck Support for the ultimate in rider protection.

As well as offering superior protection, the Venture R Jacket has been designed to offer enhanced levels of rider comfort. Stretch panels on the forearms provide increased flexibility and movement, while the cuff adjustment closure system reduces material bunching for a snug fit.

It's versatile too. This jacket can be adapted to suit every environment thanks to its removable sleeves and zippered air intake and exhaust vents, which are strategically positioned for optimized airflow that can be controlled according to rider's needs.

And it's also practical, with generous and convenient storage options. This jacket is equipped with two fastening front hand cargo pockets, one zippered waterproof chest pocket and a large back utility pocket for real-world practicality.

Other considered rider-friendly touches include a slim collar construction with stretch main fabric and microfiber comfort inner lining, a microfiber comfort edge on the collar and cuffs, pre-curved sleeves for reduced fatigue when riding, an inner water hydration compartment to accommodate a water pouch, and BNS loops to seamlessly incorporate neck supports.

The Venture R pants are equally versatile. Lightweight, durable and specifically engineered for the rigors of Enduro riding, the Venture pants offer high levels of mobility and comfort. With a water resistant treatment and zippered air-intakes, these pants are equipped to deal with a wide range of weather climates. ■

» Talk with your Parts Europe sales rep for more details and check out www.alpinestars.com.

The Venture R jacket from Alpinestars is stylish and protective. Features such as multiple pockets, all-around abrasion resistance and removable sleeves make it ideal for a variety of riding conditions.



Venture R pants



Going Big

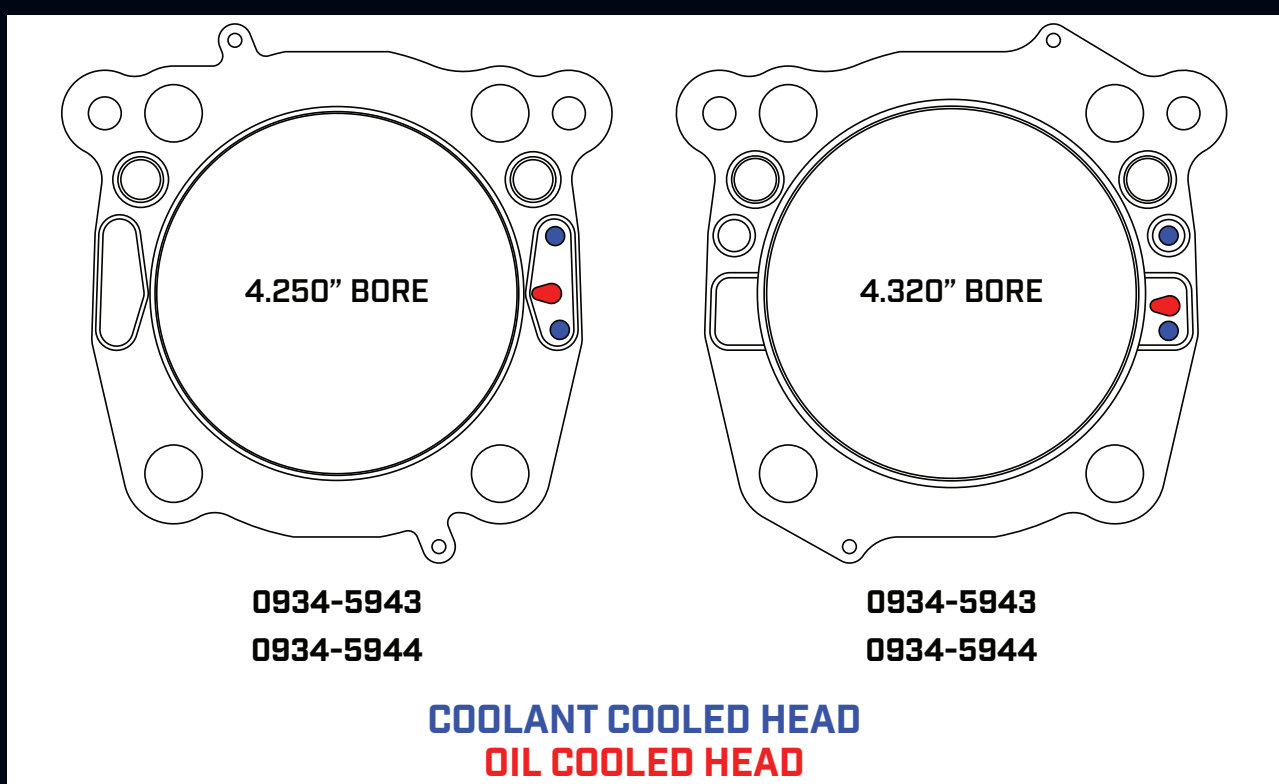
Gaskets for Oversize Milwaukee-Eights

Right from the introduction of the Harley-Davidson Milwaukee-Eight, Cometic Gasket has been there with all the gaskets and seals needed for the newest V-twin power plant.

And, if you have been following that progression you have seen some of the changes Cometic has made to its available head gaskets as the M8 cylinder bores keep getting larger. Most notably, the no-weld head gaskets that Cometic developed to return 4.250-inch overbore kits to true bolt-ons, with no special welding or machine work required on the cylinder heads.

a Harley-Davidson engine. In that search, they discovered there was more room available in that M8 to safely squeeze out one last bore size on the oil cooled models, before that oil hole in the gasket-mating surface actually fell into the piston bore!

Cometic went back to the drawing board and, once again, developed a new cylinder-head gasket with an even newer embossment that would capture the oil hole in the gasket-mating surface, and allow that new, even larger 4.320-inch bore size. This new head gasket requires no



Recognizing the fact that many customers with Milwaukee-Eight-powered bikes are opting for increasingly bigger overbore kits, Cometic has redeveloped its no-weld head gasket to keep up with the demand. The gaskets allow big-bore kits to be easily installed with no costly welding or other modifications.

Initially on oil-cooled models of the M8 engine a hole on the mating-surface of the head had to be plugged or welded on bores 4.250-inch or larger. Cometic, understanding the importance of making this popular bore size a true bolt-on kit, developed a new head gasket with a new embossment design that would allow the big-bore engine to be re-assembled without first requiring costly welding or any other modifications to be made to the oil hole in the head.

Obviously popular, this head gasket has been available now for three years, with the choice of 0.030-inch or 0.040-inch thickness.

Well, everyone knows that V-twin enthusiasts are constantly on the hunt for more horsepower and torque from

modification to the oil hole in the head-gasket mating surface of the head on all oil-cooled models.

The new Cometic Gasket 4.320-inch bore no-weld Milwaukee-Eight head gasket is available now, also with the choice of 0.030-inch or 0.040-inch thickness. All these no-weld head gaskets will, of course, also work on all coolant-cooled M8 models as well, without any head modifications. The oil-cooled models are just more critical because the oil-cooled heads have a different style hole as well as a location that's closer to the bore as compared to the coolant-cooled models. ■

» Talk with your Parts Europe sales rep for more details on Cometic's new no-weld gaskets, and get more information at www.cometic.com.



Cruiser Contest 2020

High Marks for Stability in the Wet

Among the many attributes that Michelin can list about its new Commander III tires, "test winner" is now one of them. The Commander III Cruiser tires took top honors in a recent cruiser tire test conducted by the popular German motorcycle magazine *Motorrad*. The Michelin Commander III Cruiser tires were not surpassed in any of the criteria and ranked first in the overall test.

The new Michelin Commander III line includes both a Cruiser and a Touring version, and the tires are available in a total of 27 sizes. This is the first time that Michelin has offered more than one style of Commander tire.

The first Michelin Commander tire launched back in 1998, becoming the company's first cruiser tire. Michelin engineers collected extensive feedback from cruiser riders so that the next tire, the Commander II, would be another step forward for the cruiser tire segment. The Commander II is still an extremely popular choice among cruiser riders. So popular, in fact, that 17 of the current 33 sizes will still be available in 2020.

Now, the Michelin Commander III is the next step in the evolution of Michelin's cruiser tire. As the cruiser segment continued to grow in variety and popularity, it became clear that there was no "one tire fits all" solution for V-twins. By offering both a Cruiser and a Touring version, Michelin is able to give riders the right tire for their preferred riding style.

The Michelin Commander III Cruiser tire is designed to deliver even more wet grip and durability than its predecessor, making it a stable platform even in bad weather. Meanwhile, the Commander III Touring tire also boasts enhanced wet grip, and its new tread compounds provide the longevity that Touring riders require.

Of course, there are a number of characteristics that both of the tires share. Similar tread patterns for both versions of the tire plus patented velvet sidewall styling give the Commander III a unique but timeless look that is designed to enhance a V-Twin motorcycle.

All of the features of the Commander III tire line are held to the Michelin Total Performance standard, which means features like wet grip, handling and longevity are all optimized for all-around premium performance. The result is an extremely well-balanced tire that customers can rely on in all seasons.

The Michelin Commander III tires have enhanced wet grip thanks to a silica compound. With that improvement in the Michelin Commander III Cruiser tire, the *Motorrad* test riders reported that while riding on a wet track, they were able to achieve significant lean angle through the corners and brake aggressively in a straight line without breaking traction. ■

» Talk to your Parts Europe rep for details about the Michelin Commander III Cruiser and Touring tires. Find all details and fitments at <https://moto.michelin.co.uk/motorbike>.



The Michelin Commander III Cruiser tire earned top honors from the popular German motorcycle magazine *Motorrad* thanks to their performance in dry and wet conditions.



Commander III Touring tires



Feel the Breeze!

Cooler Belts Last Longer

Side-by-sides are meant to be driven hard and enjoyed, but for your customers who operate their rigs in especially hot weather, technical terrain, or just have a penchant for putting the pedal down, belt wear may become a problem.

Expose a drive belt to too much heat for too long and it will glaze, harden, and eventually stop doing its job or even fail entirely. To help your hard-charging Polaris RZR customers keep their drivetrains working their best, Bikeman Performance has a lineup of Cyclone clutch covers that offer drastically improved airflow for cooler drivetrain operation and extended belt life.

Bikeman Performance's covers are designed, developed, and made in the USA from billet aluminum, so not only are these covers durable, they also look great. The lightweight design has built in fan blades that add strength and direct air toward the clutch any time the engine is running. This constant airflow can be the difference between keeping the fun going and ending up on the side of the trail with a squealing belt.

Installation is fairly straightforward and can easily be done by your service techs or accomplished in your customers' garage, assuming they have the right equipment (a clutch puller and the appropriate clutch-compression tool).



Bikeman Performance's Cyclone clutch covers for Polaris RZRs help increase airflow over the clutch, which helps keep drive belts operate at a lower temperature. This helps prolong belt life, and could keep your customers riding longer.

Designed for the RZR 800, 900, and 1000, Bikeman's Cyclone clutch covers for Polaris RZR Turbo XP & RS (p/n 1140-0725), and Polaris RZR Pro (p/n 1140-0751) replace the stock primary clutch cover. Since the primary is always spinning, the Cyclone is always generating airflow and providing cooling, with an increase of about 25 CFM at idle and up to 50 CFM at full shift-out.

That's a lot more air to pull heat off the clutch faces, which in turn helps reduce the temperature of the belt. How much, you ask? Bikeman testing shows a decrease of 40 to 50 degrees, which is the difference between too hot to touch and being cool enough to place your hand on. If your hand can handle it, the belt sure can too.

A common question about the Cyclone cover is whether the clutch will need to be rebalanced. Bikeman's extensive testing with the P85 clutches don't show any premature wear on the clutch or engine when the assembly isn't rebalanced, so the procedure isn't considered necessary.

Cooking a belt is a frustrating reason to have a ride end. Offering your customers a Cyclone clutch cover is an easy way to prolong belt life and an easy add-on sale if drivetrain maintenance is already being performed. ■

» *Talk with your Parts Europe sales rep for details and check out www.bikemanperformance.com.*



Riding Essentials

Stock and Sell What Riders Need

For every rider looking for something new and shiny to put on a motorcycle, ATV or UTV, there are plenty more asking about must-have parts. The replacement brake pads, brake rotors and clutch kits keep those same machines running and in the game.

TRW has all of that and Parts Europe has TRW. No matter what the application might be, with TRW there's a full choice of all those critical wear parts that motorcycle, ATV and UTV riders need.

Everything from TRW is manufactured with cutting-edge technologies, and is designed to really perform. It's all backed with the kind of service you can trust, too. Based in Neuwied, Germany, TRW offers quality and value for you and your customers.

The TRW brake pads are the perfect example. With applications for machines from 1970 right up to the latest 2020 models, it's a lineup including 13 different friction compounds for more than 6,000 different motorcycle, ATV and UTV models. By offering all this, matching the exact brake pad to the rider's need, TRW makes sure your customers get the correct compound every time whether it's for a touring bike, a sportbike, a superbike, a scooter, an enduro or motocross bike or an ATV/UTV.

TRW has the performance-matched brake discs to complement the lineup of pads. Also available in that wide range of types and styles, the applications here cover more than 2,000 motorcycle models. All TRW brake discs are made of hardened high-grade steel alloy machined to the tightest tolerances to ensure an extended service life with improved performance of the pads. Discs intended for road use come with a TÜV certificate of conformity, too.

Riders need clutch components and full kits, too, and TRW has them.

TRW also has a range of clutch components and full kits – friction plates, steel plates, reinforced clutch springs and complete clutch sets for almost all motorcycle models. The range includes a variety of friction materials to suit most any application. There are friction plates for dry-clutch setups, too, and the TRW steel plates are manufactured to the tightest tolerances using the highest-grade steel to offer extended life and optimized performance.

And TRW's complete clutch package Superkits make clutch replacements even easier. Superkits are available for most popular motorcycles, and save time and money by including everything needed – friction plates, steel plates, heavy-duty springs and gaskets – all in one box with one part number. ■

» *Parts Europe has all of this and more from TRW. Talk to your rep about TRW and get more information at www.trwmoto.com.*



TRW has brake pads and rotors for a big range of motorcycle, ATV and UTV models. All of them are a healthy upgrade over the OE components.



TRW's clutch package Superkits contain everything needed for a clutch replacement – friction plates, steel plates, heavy-duty springs and gaskets – all in one box with one part number.



Old School Updated

Classic Looks, Modern Performance



With the popularity of vintage motocross bikes, Moto-Master's range of Vintage MX Discs are a perfect upgrade that provide classic old school styling with modern performance.

Vintage dirtbikes like old motocross machines, trail bikes and dual-sports, are more popular than ever and the owners include everyone from veteran motorcyclists to the new crowd of younger riders wanting to keep it old school.

One of the main things that all those riders can agree upon is that those older machines are a whole lot of fun. As great as they are, Moto-Master can make them even better thanks to its line of Vintage MX Discs. These are brake discs with the authentic style and vintage look older bikes deserve, combined with modern, state-of-the-art materials and manufacturing techniques.

Vintage MX Discs are crafted with specially hardened premium stainless steel that's been laser cut, CNC machined, and precision double-ground for perfect fitment and flatness. Bringing together classic style with these latest materials and manufacturing technologies, the Vintage MX Discs really are the best of both worlds.

Vintage MX Discs are available for direct fitment on all the popular Honda, Kawasaki, KTM, Suzuki, and Yamaha off-road bikes dating all the way back to the 1980s. Parts Europe has them all.

Whether that bike is updated-vintage with new Moto-Master discs or it's a new off-road machine, upgrading the drive chain is always a good move. Moto-Master offers the Velocity Series chains, and the range includes the lightweight V2, the O-ring V4, and X-ring V6. For the high-end racer's choice, there are the GP Gold 520 Series chains – Moto-Master has it all covered.

The low-friction, pre-stretched V2 chains are available in 415, 420, 428 and 520 sizes. The V4s offer O-ring protection, shot-peened side plates and extended lifespan. The X-ring V6s deliver an even longer lifespan with up to a 40 percent reduction in friction.

The top-quality GP Gold Series chains feature high-quality German-steel components, and the gold finish outer plates maximize corrosion resistance. They're designed for the toughest conditions in high-level motocross competition. ■

» *Talk with your Parts Europe sales representative about the Vintage MX Discs and the Velocity Series chains, and check out www.moto-master.com.*



Moto-Master's Velocity Series chains come in a variety of configurations and fits.



Water Wear

Geared Up for the New Season

From the cold waters of the Atlantic to the warm Mediterranean, and on all the lakes and waterways throughout Europe, Slippery brand wetsuits, vests, boots, gloves and accessories have become a favorite with watercraft enthusiasts. Whether it's recreational riding, freestyle racing or just about any on-the-water motorsport activity, Slippery has gear for the occasion.

For 2020, Slippery's collection features lots of new and exciting styles, colors and performance and comfort features. It's all aimed at the wants and needs of watersport enthusiasts and Parts Europe has it all.



Wetsuits

From the fully-sleeved and collared Breaker John & Jacket combo, to the comfort, flexibility and breathability of the Pro John sleeveless one-piece, Slippery has what your customers need. The collection also includes the short-sleeve, short-leg Breaker Spring wetsuit. Crafted from 2mm neoprene and 1.5mm Airprene, there's warmth, coverage, comfort and flexibility in all of them.



Vests

With the Hydro, Surge Neo, and Impulse Nylon, Slippery has the right vest, too. For the performance-oriented, the highly visible and aggressively styled Surge Neo offers great flexibility and comfort. The economically priced and lightweight Hydro serves up plenty of comfort, too, and a secure fit. And for riders looking for value, there's the Impulse Nylon, which is ideal for general recreational use. It features a universal fit to accommodate riders of all shapes and sizes.



Gloves

Slippery has all the gloves riders need, as well. The performance, comfort and all-around flexibility of the Circuit glove comes from a long racing heritage. It also features a warm neoprene chassis, as well as a perforated palm and anti-slip gel print on the fingertips for increased feel and control. The Circuit's Innospan backhand, hook-and-loop closure, and flat-stitched seams assure comfort.

As the super lightweight glove in the lineup, the Slippery Flex Lite is crafted with four-way stretch mesh and features a perforated palm and anti-slip silicone print for increased grip.

Footwear

Slippery completely redesigned this lineup last year and all those great features are back for 2020. Competition ready, the Liquid Race Boots fill the need of just about any rider.

Featuring a durable molded outsole with an anti-abrasion heel and toe there's great traction, while the internal heel and athletic sole add stability and support. Going along with all this there's a removable 1.5 mm neoprene booty for comfort.



Rashguards and Accessories

To round out this lineup there are plenty of long- and short-sleeve Rashguards, Board Shorts and casual wear along with accessories like Throttle Levers, Stand-Up Handlebars, Whistles, Lanyards, Anchor Bags and Key Floats. In short, Slippery has what watercraft enthusiasts need. ■



» Talk with your Parts Europe sales rep for details, and find more information at www.slipperywetsuits.com.



Awesome Automatic

Time to Focus on the Fun



With the Radius X drop-in kit for dirtbikes, Adventure bikes and American V-twins, adding automatic functionality is as easy as swapping the clutch pack.

If the idea of an automatic clutch conjures thoughts of a pitbike intended for children or a twist-and-go commuter scooter, it's time to shift your thinking. Rekluse clutches may provide automated, seamless clutch engagement, but it's not for a mundane purpose. Rather, Rekluse clutches are designed to simplify and maximize performance so your customers can forget about stalling and focus on what matters – whether that's conquering a section of rutted trail or nailing the start while drag racing a modified, big-inch Bagger.

If your customers are hardcore riders, then they'll likely appreciate the precision and performance of a Rekluse clutch kit. What started as an off-road-only product nearly 20 years ago has expanded to include everything from motocross bikes and ATVs to Adventure bikes and V-twins. Between the Radius X drop-in clutch packs, to the full-replacement CX kits, Rekluse has clutch packages to improve the fun and functionality of machines in nearly every market segment.

At the heart of all Rekluse clutches is the EXP expanding clutch disc. This innovative centrifugal device automatically engages and disengages the clutch based on engine rpm via a series of Teflon wedges and ramps that cause the plate to widen as revs rise. With the EXP disc, riders can start and stop without touching the clutch lever, yet the lever still remains fully functional for shifting and as a manual override. The EXP disc's engagement point is fully adjustable to suit rider preferences.

With the Radius X drop-in kit for dirtbikes, Adventure bikes and American V-twins, adding automatic functionality is as easy as swapping the clutch pack. The kit includes the EXP disc as well as Rekluse's TorqDrive friction plates and



For a great upgrade, the Radius CX kit combines an EXP disc and TorqDrive friction plates with Rekluse's own Core clutch basket, pressure plate, clutch hub, springs, and clutch cover.

uses the stock basket, hub, pressure plate, springs, and steel plates.

Rekluse's TorqDrive friction plates are thinner than OEM plates so more of them fit in the basket, which increases torque capacity. Additionally, TorqDrive discs use steel cores that have a lower expansion rate than OEM aluminum parts, leading to reduced clutch fade under heavy use. Add to that a refined friction material and basket sleeves that help prevent notching of the factory clutch basket, and you have a clutch pack that can last several times longer than the OEM pack.

For the ultimate upgrade, the Radius CX kit combines the EXP disc and TorqDrive friction plates with Rekluse's own Core clutch basket, pressure plate, clutch hub, springs, and clutch cover. These machined, hard-anodized parts ensure the best performance from the auto clutch and are ideal for racers and serious off-road riders. ■

» With a Rekluse clutch, your customers will experience precise and consistent clutch engagement and the ability to focus on riding rather than finessing the clutch lever. For more information on the Radius X and Radius CX kits, talk with your Parts Europe sales rep and visit www.rekluse.com.



Heading Out

Helmets for Street and Off-Road

From dual-sport to off-road adventures, Z1R gives riders helmet options that include features like street-to-trail conversion, the latest impact deflection technology and sizing to fit all types of riders.

The Z1R Range Dual-Sport helmet is designed to take on the same environments as a dual-sport motorcycle, whether it's street riding, off-road or a mix of both.

The Range helmet reflects that versatility with a design that enables the face shield to be removed and replaced with included pivot cover plates, allowing the rider to wear the Range with motocross goggles. The polycarbonate shield is scratch

According to Z1R, by doing that, the MIPS BPS system absorbs some of the energy of the impact, deflecting a part of the force away from the rider's head to reduce the risk of brain injury.

The Z1R F.I. MIPS helmet is lightweight, compact and strong thanks to its injection-molded polycarbonate shell. The unique friction hinge visor can easily be adjusted and secured on the fly without the hassle of any tools. The extra-large eye port provides excellent visibility and the perfect fit with any motocross goggle. The F.I. MIPS features nine intake and three exhaust vents to provide optimal ventilation for even the hottest days on the track or trail.



The Z1R Range Dual-Sport helmet features a versatile design that allows riders to remove the face shield and use motocross goggles instead. A drop-down inner sun visor allows for quick eye protection on the move.

resistant, and it pairs with a drop-down sun visor to enable riding in any lighting conditions. The injection-molded ABS shell is combined with a dual-density EPS liner and a fully removable moisture-wicking liner and cheek pads.

For off-road riders, Z1R now offers the revolutionary MIPS Brain Protection System (BPS) with the new F.I. MIPS. The MIPS BPS is designed with a low-friction layer inserted between the shell and the liner of the helmet. If a rider's head hits the ground at an angle during a crash, the low-friction layer allows a slight sliding motion in all directions. This sliding reduces the rotational motion that is transmitted to the brain during impact.



The Rise off-road helmet is available in adult, youth and child sizes. It features plenty of ventilation to keep things cool while out riding motos or ripping trails.

Another option in Z1R's off-road helmet category is the Rise helmet, which Z1R offers in adult, youth and child sizes. The Rise keeps riders cool with dual forehead, chin and rear exhaust vents plus an open-flow mouthguard with a layer of aluminum mesh to keep out debris. When the weather turns cold, a breath box and vent plug kit are available separately. Outside, the rear shell shape of the Rise assists with positioning goggles. Inside, the moisture-wicking liner and cheek pads can be removed and washed. ■

» Learn more about Z1R dual-sport and off-road helmets from your Parts Europe rep and visit www.z1r.com.

OptiMATE

Starting Off Strong Battery Preparation Done Right

It's almost spring, time to prepare for the onslaught of battery sales from riders who forgot to correctly maintain their batteries over winter.

Correct battery preparation is key. Simply put, recharging every battery to 100 percent before it leaves the building, and then equipping the rider with an OptiMate 24/7 maintenance charger to protect the battery when the vehicle is parked, greatly reduces time-wasting warranty claims.

TecMate has the multi-bank charger solutions that can help any dealer fully prepare batteries and diagnose and repair the few returned batteries.

Both AGM batteries that are delivered with an acid pack, and STD flooded cell batteries that require acid prior to activation, must receive an activation charge after filling. Factory activated AGM batteries should be delivered 100 percent charged. OptiMate 3 x4 (p/n 3807-0309) & OptiMate 3 x2 (p/n 3807-0308) can typically activate new batteries overnight, and can recover flat batteries from as low as 2V. The chargers' 24/7 maintenance program keeps batteries fresh and ready to sell.

For speedier activation OptiMate PRO4 (p/n 3807-0155) offers four fast charge stations that can activate up to four batteries each hour.

Lithium batteries lose power slower on the shelf, but it is always best to recharge to 100 percent before sale. Parts Europe Lithium batteries have a built in three-LED test function that can confirm charge level.

OptiMate Lithium 4s0.8A x4 (p/n 3807-0287) charges four batteries, and can test and recover flat batteries from as low as 0.5V, or reset the BMS / low voltage protection of a smart lithium battery. ■

» *Talk with your Parts Europe sales rep for details, and get further information at <https://optimate1.com>.*

**FR Pour bien démarrer
– La préparation correcte de la batterie**

Le printemps est presque là, il est temps de préparer l'offensive des soldes sur les batteries pour les motards qui ont oublié d'entretenir leurs batteries correctement pendant l'hiver.

Préparer correctement la batterie est crucial. Il vous suffit de recharger chaque batterie à 100 % avant qu'elle ne quitte votre local puis d'équiper le motard d'un chargeur de maintenance 24/7 OptiMate pour protéger la batterie lorsque le véhicule est à l'arrêt, ce qui réduit considérablement les réclamations dans le cadre de la garantie qui constituent une perte de temps.

TecMate propose des solutions de multi-chargeurs qui peuvent aider n'importe quel revendeur à préparer complètement des

batteries, à les diagnostiquer et à réparer les quelques batteries retournées.

Les batteries AGM fournies avec un kit d'acide et les batteries à électrolyte liquide STD, qui nécessitent de l'acide avant d'être activées, ont toutes besoin d'une charge d'activation après remplissage. Les batteries AGM activées en usine doivent être livrées chargées à 100 %. OptiMate 3 x4 (p/n 3807-0309) & OptiMate 3 x2 (p/n 3807-0308) peuvent en général activer les batteries neuves en une nuit et vous pouvez récupérer les batteries déchargées jusqu'à 2 V. Le programme de maintenance 24/7 des chargeurs permet que les batteries soient chargées et prêtes à la vente.



With OptiMate's multi-bank charging stations, dealers can fully prepare batteries for customer pickup. They can even help recover flat batteries as low as 2V.

Pour une activation accélérée, OptiMate PRO4 (p/n 3807-0155) propose quatre stations de charge en mesure d'activer jusqu'à quatre batteries par heure.

Les batteries au lithium perdent de l'énergie en rayon, mais il est toujours mieux de les recharger à 100 % avant de les vendre. Les batteries au lithium Parts Europe disposent d'une fonction de test à trois LED intégrée qui permet de vérifier leur niveau de charge.

OptiMate Lithium 4s0.8A x4 (p/n 3807-0287) recharge quatre batteries et peut tester et récupérer des batteries déchargées jusqu'à 0,5 V, ou réinitialiser le BMS (Système de gestion de batterie)/la protection de basse tension d'une batterie au lithium intelligente.

Contactez votre représentant Parts Europe pour obtenir des informations détaillées et consultez <https://optimate1.com> pour en savoir plus.

**DE Ein starker Anfang
– Ordnungsgemäße Batterie Vorbereitung**

Es ist fast Frühling, Zeit, sich auf den Ansturm der Batterieverkäufe von Fahrern vorzubereiten, die vergessen haben, ihre Batterien über den Winter richtig zu warten.

Die richtige Vorbereitung der Batterie ist der Schlüssel. Einfach ausgedrückt: Laden Sie jede Batterie zu 100 Prozent auf, bevor sie das Gebäude verlässt, und statten Sie den Fahrer dann mit einem OptiMate-24/7-Wartungsladegerät aus, um die Batterie zu schützen, während das Fahrzeug stillsteht. Dies reduziert die Zeitverschwendung bei Garantieansprüchen erheblich.

TecMate verfügt über Multi-Bank-Ladelösungen, mit denen jeder Händler die Batterien vollständig vorbereiten und die wenigen

zurückgegebenen Batterien diagnostizieren und reparieren kann.

Sowohl AGM-Akkumulatoren, die mit einem Säurepaket geliefert werden, als auch standardmäßige verschlossene Zellenakkumulatoren, die vor der Aktivierung Säure benötigen, müssen nach dem Befüllen eine Aktivierungsladung erhalten. Werkseitig aktivierte AGM-Akkumulatoren sollten zu 100 Prozent aufgeladen geliefert werden. OptiMate 3 x4 (p/n 3807-0309) und OptiMate 3 x2 (p/n 3807-0308) können normalerweise neue Batterien über Nacht aktivieren und Batterien mit einer Entladung bis auf 2 V wieder aufladen. Das 24/7-Wartungsprogramm der Ladegeräte hält die Batterien frisch und verkaufsbereit.

Für eine schnellere Aktivierung bietet OptiMate PRO4 (p/n 3807-0155) vier Schnellladestationen, an denen bis zu vier Batterien pro Stunde aktiviert werden können.

Lithiumbatterien verlieren im Regal langsamer an Leistung, aber es ist immer am besten, sie vor dem Verkauf zu 100 Prozent aufzuladen. Parts-Europe-Lithiumbatterien verfügen über eine integrierte Drei-LED-Testfunktion, die den Ladezustand angeben kann.

OptiMate Lithium 4s0.8A x4 (p/n 3807-0287) lädt vier Batterien auf und kann leere Batterien ab 0,5 V testen und wiederaufladen oder das Batterie-Management-System/den Niederspannungsschutz einer intelligenten Lithiumbatterie zurücksetzen.

Sprechen Sie mit Ihrem Vertriebsmitarbeiter von Parts Europe. Weitere Informationen erhalten Sie unter <https://optimate1.com>.

IT Partire forte

– Preparazione della batteria eseguita correttamente

È quasi primavera, è tempo di prepararsi all'assalto degli acquisti di batterie da parte di motociclisti che hanno dimenticato di conservare correttamente le batterie durante l'inverno.

Preparare la batteria in modo corretto è fondamentale. In poche parole, ricaricare ogni batteria al 100% prima di lasciare l'edificio e quindi dotare il motociclista di un caricatore mantentore OptiMate 24/7, per proteggere la batteria quando il veicolo è parcheggiato, riduce notevolmente la perdita di tempo in richieste di garanzia.

TecMate dispone di soluzioni di caricabatterie multi-porta che possono aiutare qualsiasi rivenditore a preparare completamente le batterie e diagnosticare e riparare le poche batterie restituite.

Sia le batterie AGM fornite con un pacco acido, sia quelle a celle umide STD che richiedono l'acido prima dell'attivazione, devono ricevere una carica di attivazione dopo il riempimento. Le batterie AGM attivate in fabbrica devono essere caricate al 100%. OptiMate 3 x4 (p/n 3807-0309) & OptiMate 3 x2 (p/n 3807-0308) in genere possono attivare le nuove batterie durante la notte e possono recuperare batterie scariche da un minimo di 2 V. Il programma di manutenzione 24/7 dei caricabatterie mantiene le batterie nuove e pronte per la vendita.

Per un'attivazione più rapida OptiMate PRO4 (p/n 3807-0155) offre quattro stazioni di ricarica rapida che possono attivare fino a quattro batterie all'ora.

Le batterie al litio perdono energia più lentamente sugli scaffali, ma è sempre meglio ricaricarle al 100% prima della vendita. Le batterie al litio di Parts Europe hanno una funzione integrata di test a tre LED che può confermare il livello di carica.

OptiMate Lithium 4s0.8A x4 (p/n 3807-0287) carica quattro batterie e può testare e recuperare batterie scariche a partire da 0,5 V o ripristinare la protezione BMS/a bassa tensione di una batteria al litio intelligente.

Parlate dei dettagli con il vostro rappresentante di vendita Parts Europe e per ottenere ulteriori informazioni andate su <https://optimate1.com>.

SPRING IS 'CHARGE BATTERIES' TIME!

**4 batteries at the same time -
Activate new, save flat, charge to 100% and keep ready!**



4 x 12V AGM / STD wet cell

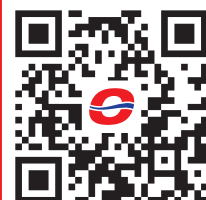


4 x 12.8V LiFe / LFP Lithium



optimate1.com

OptiMate High Performance
Battery Chargers





Power Pack

Drive Chain and Sprocket Kits

Sunstar's chain and sprocket kits include everything needed for an upgrade over the stock setup. The kits include the drive sprocket, rear sprocket and chain, all for only one part number.



The Sunstar plus chain kit includes an RTG1 or XTG chain. These premium chains feature Sunstar's Triple-Guard sealed ring technology where there are three sealing lips and lubrication pools per side of the ring, providing consistent protection in even the harshest of environments.

Both the RDG and RTG1 chains come in 520, 525 and 530 sizes. The RTG1 is suitable for road racing, while the off-road racing-level XTG comes in smaller 100-link and 120-link lengths for motorcycles and ATVs of 750cc or smaller.

Sunstar makes it easy to replace the chain and sprockets on a bike with a kit containing a drive sprocket, rear sprocket and chain in the original size. Dealers only need to look up one part number to get everything needed for the job.

Sunstar's drive sprockets are manufactured from case-hardened chromoly steel for outstanding strength and durability. A surface treatment resists rust and corrosion for a longer life.

The Sunstar chain kits are available in standard and plus versions. The standard chain kit includes an RDG chain, a high-quality street motorcycle chain with Sunstar's own DG-ring (DualGuard) design. While standard O-ring chain designs have just a single sealing lip, the heavy-duty RDG chain features two sealing lips and lubrication pools per side. The design ensures that the chain will produce lower friction and have a longer life.

Each steel OEM-replacement rear sprocket is made from heat-treated high-carbon steel for strength, durability and reliability. ■

» Talk to your Parts Europe rep for more details about Sunstar chain and sprocket kits. Learn more about the company at www.sunstarmoto.com.

SUNSTAR

THE ORIGINAL.
SINCE 1946.

KIT SUNSTAR

Matteo Cavallo
Team Sherco Azzalin

ERGAL SPROCKET

Z-SPROCKET

STEEL FRONT SPROCKET

EKR1
Racing chain

www.sunstarmoto.com



Stretched and Stylish

Comfortable Seating for Tall Riders

Tall riders like to show off their skills, too. That was the thinking behind the KickFlip Daddy Long Legs from LePera Motorcycle Seats. The seat combines shred-worthy styling with an extra 51mm of legroom.

The KickFlip and its longer counterpart, the new KickFlip Daddy Long Legs, are available for 2008 to 2020 Baggers and 2006 to 2019 Dynas, but they are designed to be so much more than just a solo touring seat. The maximized back support and ample seating area offer plenty of comfort, and also provide a platform for more adventurous riders. In other words, the KickFlip is ideal for both long-haul rides and showing off.

The KickFlip Daddy Long Legs moves the rider 51mm further back from the standard KickFlip. Not only does that give riders with long legs a bit more room to stretch, but it also enables tall riders to have a more comfortable reach to the handlebars.

Both versions of the KickFlip seat are available in four different finishes. The Basket Weave, Diamond and Pleated



The KickFlip Daddy Long Legs comes in four different finishes, including Diamond and Pleated Stitch. All of them offer taller riders more room to stretch.

Stitch are more traditional finishes, while the Gripp Tape finish is LePera's answer for riders who need an extra level of traction.

While the KickFlip is a forward-thinking design, it is still a traditional LePera seat at its core. The handcrafted steel base is powder-coated and carpeted to provide a precise fit that doesn't cause any damage to the frame or fender. LePera's Marathon Foam provides a premium blend of stability and comfort. ■

» Talk to your Parts Europe rep for more details about LePera's Daddy Long Legs seats for tall riders. Learn more at www.lepera.com.

KICKFLIP

Wicked Fun



Le Pera
SINCE 1972
Made in the USA • www.lepera.com

Dyna pictured with "Pleated" style.
FXR pictured with "Gripp Tape" style.
Bagger pictured with "Diamond" style.
Sportster pictured with "Basket Weave" style.
All 4 production styles available for all 4 models.

4 Bikes TO CHOOSE FROM. **4 Styles** TO CHOOSE FROM.



Take It With You

Storage for Adventure Riding

Long rides require luggage, whether that ride is on-road or off. Nelson-Rigg has both options covered with Rigg Gear Adventure products.

The waterproof, universal-fit Hurricane Series of luggage includes the Sahara duffle bag, Sierra saddlebags, Ridge roll bags, two sizes of Hurricane backpacks and two new sizes of Hurricane tank bags for Adventure and enduro bikes. All have a lifetime warranty and are guaranteed to be 100 percent waterproof.

The Hurricane tank bags for Adventure/enduro bikes include a quick-release strap system, adjustable compartment divider, a clear touch-screen device pocket and accessory pockets.

The Trails End line of durable textile luggage now includes two new tail bags for Adventure/enduro bikes, a mountable bottle holder and the popular Trails End adventure tank bag, all made from UV-protected UltraMax® fabric. Tail bags feature heavy-duty MOLLE webbing and buckles for mounting options, and inner straps keep contents secure. The bags have expandable compartments, and the bottle holder secures a bottle up to 30oz.



Nelson-Rigg's range of Adventure luggage features products in the Hurricane Series and the Trails End lineup. Both offer plenty of rugged, feature-packed storage options.

Also in the Trails End line, Nelson-Rigg offers Adventure/Dual-Sport saddlebags. Made from UV-treated, water-resistant TriMax fabric, the bags hold 12 liters but expand to 15 liters. The long pocket under the bags provides ideal storage for small tools such as tire irons.

The Defender Extreme ADV bike cover comes in fitments for bikes with or without saddlebags and a top case. Like the Trails End luggage, the cover is made from UltraMax material.

All of Nelson-Rigg's luggage comes with the company's Lifetime Warranty, which even includes UV fade resistance. ■

» Learn more about Nelson-Rigg gear from your Parts Europe rep, and find everything at www.nelsonrigg.com.

TRAILS END SERIES



WHERE EVER YOUR JOURNEY TAKES YOU



RIGG GEAR ADVENTURE
By Nelson-Rigg
www.RiggGear.com

NEW FOR 2020

100% WATER PROOF

HURRICANE SERIES



PARTS EUROPE
CONTACT YOUR REP FOR MORE INFORMATION

AIRMOUSSE

Inner Tube Alternative Flat-Proof Mousse Protection

It's been said that some riders have had a kind of love/hate relationship with mousse inner tube alternatives. While the foam rubber inserts eliminate the hassle of a flat tire out on the trail or track, the downside is the heavy, dead feel they can give to the wheel and tire in which they're mounted.

But now there's Airmousse, and what the company calls the "high-performance difference." By combining a high concentration of nitrogen into a specialized elastomer, Airmousse has eliminated that dreaded dead feel. With Airmousse's fourth-generation foam rubber products, your customers will experience a much more lively, lighter and traction-enhanced feel from the very first ride. There's no break-in period needed, and the new Airmousse proprietary formula and manufacturing process provides a long lasting mousse.

Two MXGP teams have already decided to use Airmousse for 2020, and Airmousse is team sponsor to Husqvarna and KTM Scandinavia Racing. That alone should tell you something about Airmousse performance and its light, responsive feel.

There is an Airmousse product specially formulated for nearly all off-road applications and tire-size fits. The Airmousse Enduro, for instance, uses a high-tech formulation that ensures a riding experience that gives that easy feel and doesn't require any run-in time. Developed in collaboration with elite Enduro riders, many have ridden with the product for well over 40 hours.

Then there's the Airmousse Soft Enduro composition. Not only does this deliver that easy feel and the ability to seal directly without run-in time, Soft Enduro has the added advantage of minimized shrinkage and being extremely soft. It'll maximize compliance and grip for optimal traction.

Airmousse MX comes with a formulation specially designed for the needs of a motocross racer. The nitrogen formula here gives the Airmousse MX a low-pressure, predictable ride that'll resist impacts and increase bump absorption. It's a lively, progressive ride that eliminates deflection and provides a light feel in motion.



With Airmousse's fourth-generation foam rubber products, your customers will experience a much more lively, lighter and traction-enhanced feel from the very first ride.

Mini-motocross bikes haven't been forgotten, either. With the Airmousse Mini MX there are lots of sizes available for all of them, too. ■

» *Talk with your Parts Europe sales rep for details, and get more information at www.airmousse.com.*

ONEDESIGN

HDR SIDE TANK GRIPS

- » Innovative tank protectors with hexagonal design
- » Provide additional grip and control in any situation
- » Protect tank from buckles, zippers and other scratch-making objects
- » Easy positioning
- » Transparent finish

FITS MODEL	PART #
HONDA	
CRF250R 18-19	4301-0671
CRF250X 19	4301-0671
CRF450L/RWE/X 19	4301-0671
CRF450R/RX 17-19	4301-0671
KAWASAKI	
KX250F 17-19	4301-0672
KX450F 16-18	4301-0720
KTM	
125/150 SX 16-18	4301-0673
125 XC-W 17-18	4301-0673
150/300 XC-W 17-19	4301-0673
250 EXC-F/XC-W 17-19	4301-0673
250 SX/XC 17-18	4301-0673
250 SX-F Factory Edition 15-18	4301-0673
250/350/450 SX-F/XC-F 16-18	4301-0673
300 EXC-F/XC 17-18	4301-0673
350/450/500 EXC-F 17-19	4301-0673
YAMAHA	
WR250F 15-19	4301-0674
YZ250F 14-18	4301-0674
YZ250FX 15-19	4301-0674
WR450F 16-18	4301-0674
YZ450F 14-17	4301-0674
YZ450FX 16-18	4301-0674



100%

ARMEGA GOGGLES

- » Injection-molded 2 mm impact-rated, shatter-resistant lens
- » Bonded, dual-injection frame construction maximizes strength and durability
- » Contouring compression seal technology to keep goggles in place
- » Ultra-wide 48 mm strap with thick silicon bead for maximum grip
- » Quick-release system offers simple lens-changing capability
- » Next-generation sweat collection management and drainage system
- » Perforated triple-layer face foam manages sweat and increases ventilation
- » Removable nose guard for extra deflection against roost and debris

MIRROR LENS	FRAME	LENS COLOR	STRAP COLOR	PART #
	Red	HIPER silver	Red/white	2601-2780
	Clark	Silver flash	Aqua/orange	2601-2781

CLEAR LENS	FRAME	STRAP COLOR	PART #
	Clark	Aqua/orange	2601-2782



100%

RACECRAFT GOGGLES

- » Superior vision system for extreme motorsport conditions
- » Outriggers help to achieve perfect balance and fit
- » Removable nose guard is a unique incorporation of the frame co-molding to ensure stability and protection in the most extreme conditions
- » Thirsty, triple-layer moisture managing foam keeps you dry and holds the goggles in place
- » Anti-fog coated Lexan® lens for flawless vision
- » Oversized 45 mm wide, silicon-coated strap eliminates slippage
- » Patent-pending technology channels air into the foam, aiding in moisture management
- » Mirrored lens models include 10 standard tear-offs and an extra clear lens; clear lens models include 10 standard tear-offs
- » Replacement lenses and tear-offs sold separately



MIRROR LENS			
FRAME COLOR	LENS COLOR	STRAP COLOR	PART #
Suez	Red	Gray/black	2601-2783
Kilroy	Silver	Navy/orange	2601-2784

CLEAR LENS		
FRAME COLOR	STRAP COLOR	PART #
Suez	Gray/black	2601-2785
Kilroy	Navy/orange	2601-2786

ACCURI GOGGLES

- » Superior vision system for extreme motorsport conditions
- » Moisture-managing triple layer foam
- » Constructed from flexible, yet durable polyurethane
- » Equipped with anti-fog, scratch-resistant Lexan® lens for unimpaired vision
- » Oversized 45 mm silicone-coated strap holds your goggles in place
- » Curved frame suited for comfort
- » Mirrored and smoke lens models include additional clear lenses
- » Optional Speedlab Vision System sold separately
- » Replacement lenses and tear-offs sold separately



MIRROR LENS			
FRAME COLOR	LENS COLOR	STRAP COLOR	PART #
Minima	Red	White/yellow/orange/red/blue	2601-2787
Rogen	Gold	Pink/black	2601-2788

CLEAR LENS		
FRAME COLOR	STRAP COLOR	PART #
Minima	White/yellow/orange/red/blue	2601-2789
Rogen	Pink/black	2601-2790

HYPERPRO

REAR SHOCK SPRINGS

- » Available in multiple spring rates so you can dial in the rear suspension on your bike
- » Improve control, comfort and stability

FITS MODEL	SPRING RATE (N/MM)	PART #
HONDA		
CRF250R 15-19	45 N/mm	1312-0852
	48 N/mm	1312-0853
	51 N/mm	1312-0854
	57 N/mm	1312-0856
	60 N/mm	1312-0857

FITS MODEL	SPRING RATE (N/MM)	PART #
CRF450R 17-20	45 N/mm	1312-0852
	48 N/mm	1312-0853
	51 N/mm	1312-0854
	54 N/mm	1312-0855
	57 N/mm	1312-0856
	60 N/mm	1312-0857



VANCE & HINES

TORQUER 450 SLIP-ON MUFFLERS

- » Cutting-edge design that enhances the M-Eight or Twin Cam engine with a rich, bold roar and improved performance
- » Massive 4 1/2" diameter muffler bodies
- » CNC-machined billet end caps
- » Work with stock headers or Vance & Hines Power Duals (sold separately, see the Drag Specialties 2020 FatBook)
- » Sold in pairs

NOTE: Qualified manufacturer declared replacement for 17-20 FLHT/FLHX/FLHR/FLTRX/FLTRU/FLTRK and 06-16 FLT/FLHT/FLHX/FLHR/FLTR.

PART #	DESCRIPTION
FOR 17-20 FLHT/FLHX/FLHR/FLTRX/FLTRU/FLTRK	
1801-1456	Chrome
1801-1457	Black
FOR 95-16 FLT/FLHT/FLHX/FLHR/FLTR	
1801-1458	Chrome
1801-1459	Black



ALPINESTARS

TECH 7 ENDURO DRYSTAR® BOOTS

- » Drystar® boot membrane provides 100% protection against water penetration
- » Upper is constructed from light, innovative microfiber that is flexible and abrasion-resistant
- » Innovative, evolutionary TPU shin plate construction for a greater range of fitment
- » Shin plate features a reinforced hook-and-loop closure for a comfortable, customized fit
- » Shin zone incorporates a TPU blade system engineered to prevent frontal hyper-extension and offer greater flex control
- » Specially designed sole provides enduro riders with superior grip, durability, feel and a high level of structural rigidity
- » Wide entry aperture for convenience with a hook-and-loop upper closure with TPU flap to allow a wide range of calf fitment adjustment and support
- » Medial-facing area is constructed from one-piece TPU panel with a honeycomb structure for maximum grip contact with the bike and improved heat- and abrasion-resistance
- » Top rear flexion of the boot is supported around the calf by an innovative TPU sliding blade system which dissipates the friction
- » Ergonomic buckle system offers a secure and highly personalized fit
- » Innovative TPU lateral ankle protection provides a biomechanical link between the middle lateral and the bottom lateral of the boot
- » Instep and Achilles accordion flex zones constructed for superior control and support
- » TPU lower shell is reinforced with a metal shank and includes toe reinforcement for impact and abrasion resistance
- » Extended microfiber gaiter helps seal out water and dirt
- » Closure system includes polymer buckles plus an aluminum frame with innovative, self-aligning quick-release closures for a custom, secure fit
- » All buckles are replaceable
- » Breathable mesh 3D liner with anti-sliding microfiber suede reinforcement on the heel area
- » Soft poly-foam surrounds the ankles and collar to offer comfort and shock-absorbing performance
- » Removable anatomic footbed
- » Exclusive high-grip rubber dual-density compound outer sole
- » Sole is replaceable
- » Available in U.S. men's full sizes 7-13

SIZE	PART #
7	3410-2320
8	3410-2321
9	3410-2322
10	3410-2323
11	3410-2324
12	3410-2325
13	3410-2326



ALPINESTARS

FASTER-3 RIDEKNIT RIDING SHOES

- » Main upper material is combination of advanced microfiber, knitted mesh and seamless thermo-welded microfibers to create an innovative, technical finish
- » Lower tongue, lateral and medial quarter in knitted mesh for breathability, comfort and a modern street look
- » Air vent details on lateral and toe area are strategically positioned to improve airflow and ventilation
- » Enhanced TPU ankle extended into lower lateral area gives improved support and protection
- » TPR slider detail on lateral toe box gives improved flex and protection
- » TPR heel counter design ensures additional lateral support and security
- » Asymmetric toe design gives protection on shift area
- » Traditional lace closure system for easy, secure and comfortable fit
- » Lateral adjustable hook-and-loop closure system with TPR strap for increased security
- » Medial dual-density ankle protectors are applied between the upper and added lining to provide strategic protection and fit around flexibility in key areas
- » Tongue and collar padding provides high levels of comfort and fit around the ankle and instep
- » 3D mesh lining for high-levels of breathability with anti-slip microsuede in the heel
- » Replaceable anatomical EVA footbed with Lycra® lining on top
- » Extremely lightweight, specifically compounded, rubber sole provides a textured grip, excellent absorption and features an integrated support shank for enhanced sole rigidity
- » CE-certified to EN 13634:2017
- » Available in men's U.S. full and half sizes size 7-14

SIZE	BLACK/RED	10.5	3405-2472
7	3405-2465	11	3405-2473
7.5	3405-2466	11.5	3405-2474
8	3405-2467	12	3405-2475
8.5	3405-2468	12.5	3405-2476
9	3405-2469	13	3405-2477
9.5	3405-2470	13.5	3405-2478
10	3405-2471	14	3405-2479



ALPINESTARS

REEF GLOVES

- » Stretch fabric construction for low weight and high-levels of breathability
- » Synthetic suede palm for enhanced abrasion resistance
- » Stretch fourchette for optimized flexibility and breathability
- » Rubber grip zone for excellent levels of grip and additional protection against abrasion and cuts
- » PVC covered hard knuckle for enhanced protection against impacts
- » Webbing wrist strap for a safe and secure closure
- » Ergonomic thumb for optimized freedom of movement and flexibility
- » Ergonomic stretch insert for enhanced stretch in the palm for additional comfort
- » Multi-media compatible index finger
- » Slim wrist construction ensures the glove sits better within the sleeves of a jacket
- » Maze pattern heat stamp on palm for enhanced protection against abrasion and cuts
- » Stretch mesh construction on full back of hand for breathability
- » CE-certified Level 1 EU2016/425
- » Available in sizes S-3X

SIZE	BLACK	BLACK/WHITE/FLUORESCENT RED	BLACK/WHITE
S	3301-3794	3301-0800	3301-3818
M	3301-0795	3301-0801	3301-3819
L	3301-0796	3301-0802	3301-3820
XL	3301-0797	3301-0803	3301-3821
2X	3301-0798	3301-0804	3301-3822
3X	3301-0799	3301-0805	3301-3823



PREDATOR SEAT

FOR 18-20 SOFTAIL®

PN 0802-1265



Predator seats are now available for 18-20 Softail models including Breakout, Fat Boy, Fat Bob and more. Available in Smooth Solar-reflective leather or high-quality automotive grade vinyl, the Predator's custom molded polyurethane foam provides maximum comfort and styling.

See your Parts Europe Sales Representative for more information on the complete line of Drag Specialties Seats.



Manufactured by
Drag Specialties in the U.S.A.

**PARTS
EUROPE**

partseurope.eu

DRAG
Specialties
seats

seats.dragspecialties.com