

# PARTS EUROPE<sup>®</sup> *Magazine*

WINTER 2020 ★ VOL. 11, #1

## THE 2020 FATBOOK COVER BIKE



## YEAR OF THE PERFORMANCE BAGGER



9901-2633

- ★ MXGP News
- ★ Product Features
- ★ New Vendor Stories



**IMPROVE YOUR RIDE WITH  
MORE COMFORT AND CONTROL.**

# **THE INSTAN**

Order the Products Shown in the Photos for Your Harley Davidson.  
Fits Touring Models: FLHR, FLHT, FLHX, FLTR, FLTRX, and FLTRXS

2008-2020 Slim-LS Seat : 0801-1014

2008-2020 LS Sissybar Pad : 0822-0327

2014-2020 LS Lid Covers : 3501-1350

**DRAG**  
Specialties

**PARTS**  
EUROPE

*Available for HD & Indian Touring Models*

**T UPGRADE!**

**#1 IN GEL SEATING SINCE 1987.**

**SADDLEMEN**  
www.SADDLEMEN.com

Winter 2020 ★ Vol. 11 #1

## ON THE COVER

- » 26 2020 FatBook Cover Bike:  
Year of the Performance Bagger



**Publisher / Editor-in-Chief:** Don Emde · don@emdebooks.com  
**Editor:** Dennis Johnson · dennis@emdebooks.com  
**Art Director:** Morgan Williams  
**Production Manager:** Jen Rose · jen@emdebooks.com  
**Copy Editor:** Tracy Emde  
**Webmaster:** Jeff Emde  
**Design Assistant:** Kristina Nystul Breaux  
**Contributing Writers:** Trisha Cole, Beth Dolgner, Don Emde, Dennis Johnson, Laura Keren, Joe Kress, John Taylforth, David Wells, Chris White  
**Contributing Photographers:** Michelin Motorsports, Kawasaki European Press Services, Laura Keren, Bavo Swijgers, Yamaha Racing

Thanks also to everyone at Parts Europe, Parts Unlimited, Drag Specialties and Edge Advertising for your assistance and support!

**To our readers:** Editorial space in this publication has been offered on an "advertorial" basis. While we have done our best to check the facts, our readers should be aware that the responsibility for accuracy rests with the manufacturers, vendors or sponsors who provided the information to us. – Publisher.

**Parts Europe Magazine** is published by Don Emde Inc., 92 Argonaut, Suite 160, Aliso Viejo, California 92656 USA. Copyright © 2020 by Don Emde Inc. All rights reserved. No part of this publication may be reproduced or transmitted in any form or by any means, electronic or mechanical, including photocopying, recording, or by any information storage or retrieval system without permission from the publisher. Don Emde Inc. cannot take responsibility for lost or misdirected mail. Don Emde Inc. assumes no liability for any material published herein. All statements and information are the responsibility of the authors and sponsors.



**Publishing office:**  
92 Argonaut, Suite 160, Aliso Viejo, CA 92656 USA  
Tel: 001-949-215-4780  
Fax: 001-949-215-9042  
Web: www.partsmagazineonline.com

Printed in Germany

**NOTICE:** Parts Europe does not sell direct to the public. To purchase products seen in this magazine, please see your dealer.

**DEALERS!:** Register today as a Parts Europe dealer for convenient 24/7 online ordering at: [www.partseurope.eu](http://www.partseurope.eu) or call: 0049 (0) 6501 96950

## DEPARTMENTS

- » 6 Welcome Letter  
 » 10 News & Events  
 » 75 Parts Department

## SPECIAL FEATURE

- » 56 MotoGP Preview

## PRODUCT SHOWCASE

- » 30 Icon  
 » 34 Moose Racing  
 » 36 LA Choppers  
 » 40 THOR  
 » 42 Vertex Pistons  
 » 46 Dunlop  
 » 48 Maxima  
 » 50 J.W. Speaker  
 » 52 Drag Specialties Handlebars  
 » 54 Barnett  
 » 60 Michelin  
 » 61 Z1R  
 » 62 Parts Europe: New Brands  
 » 64 Wössner  
 » 65 Mitas  
 » 66 SW-Motech  
 » 67 Moose Utility Division  
 » 68 Big Bike Parts  
 » 69 JT Sprockets  
 » 70 Alpinestars MX  
 » 71 Alpinestars Road  
 » 72 OptiMate  
 » 73 PSR

# PARTS EUROPE

Parts Europe GmbH  
Conrad-Röntgen-Strasse 2  
54332 Wasserliesch / Trier Germany

### General Info:

Tel: +49 (0) 6501 / 96 95 0  
Email: [info@partseurope.eu](mailto:info@partseurope.eu)

### Sales info:

Tel: +49 (0) 6501 / 96 95 2000 Fax: +49 (0) 6501 / 96 95 2650  
Email: [sales@partseurope.eu](mailto:sales@partseurope.eu) Web: [www.partseurope.eu](http://www.partseurope.eu)





**PARTS  
EUROPE**

**YOU WANT A  
JOB THAT IS  
PERFECT  
FOR YOU?**

■ Andrea – Sales Agent since 2015

- **YOU** are all fired up about motorsports, have gained first professional experience in the field, and you know your way around replacement parts and accessories for several models?
- **YOU** are smart, have a talent for customer support and you are eager to help our dealers every day?
- **YOU** are a team player since only in a team you are able to fully exploit your talents and also go full throttle on the job?

**Then join our  
SALES-TEAM as:**

- **Freelance Sales Representative** for Switzerland\*
- **Freelance Sales Representative** for Germany\*
- **Regional Sales Manager** D/A/CH\*
- **Sales Agent** D/A/CH\*
- **Sales Agent** France\*

\* All genders (m/f/d) are welcome!

**WE  
SUPPORT  
THE SPORT®**

**Parts Europe GmbH**  
Conrad-Röntgen-Straße 2  
54332 Wasserliesch/Trier (Germany)  
Web: [www.partseurope.eu](http://www.partseurope.eu)  
E-mail: [career@partseurope.eu](mailto:career@partseurope.eu)

# In This Issue

by Don Emde

**W**elcome to our first issue of the new year. The Parts Europe sales team has been busy in recent months attending many events, especially the massive EICMA show in Milano, which always draws many thousands of motorcycle riders and members of the industry. We have a report in this issue showing how Parts Europe strategically designed its displays to match up with products found in its various catalogs.



Parts Europe Displays at EICMA. Photo by Horst Rösler

A feature brand of Parts Europe that we highlight in this issue is Drag Specialties. Please read the story starting on page 26 of the Performance Bagger that is featured on the cover of the 2020 *FatBook* catalog. It was built in America by Curtis Hofmann and features an interesting blend of both high performance and touring accessories. It's like a race bike that can be ridden to the track – even if the track is many kilometers away.

In addition to many other products and brands being showcased, we also take a look at the upcoming MotoGP racing season, which kicks off in early March

**Reigning MotoGP champion Marc Marquez (left) is expected to face stiff competition this season from Yamaha riders Maverick Viñales (middle) and Fabio Quartararo. Time will tell.** Photo by Michelin Motorsports



2020 Drag Specialties *FatBook* cover bike



in Qatar. Marc Marquez had a dominating season in 2019, but many in the sport predict the 8-time career champion will face some serious competition this year from Yamaha's young lions Maverick Viñales and Fabio Quartararo. Ducati, Suzuki, KTM and Aprilia all have riders who also have ambitions to win races and compete for the world title, as do other Honda riders including the "other" Marquez, Alex, who joins his brother on the Repsol Honda team. An entertaining season surely awaits us all.

We wish you all much success in the new year ahead. ■

**Ride Safe!**



Publisher / Editor-in-Chief

# WE RIDE TOGETHER.

MADE IN THE  
**U.S.A.**



**MT**

The American Elite with Multi-Tread (MT) technology offers passionate cruiser and chopper riders excellent grip in both wet and dry conditions, as well as outstanding mileage. So, you can enjoy the riding experience even more.

**Find out more at [dunlop.eu](http://dunlop.eu)**

**AMERICAN  ELITE™**

 **DUNLOP**

# RIGHT IN YOUR **WHEELHOUSE**

MOOSEUTILITIES.COM

**387K**



**387K**



**387K**



**387K**



**399X**



**548K**



**112X**



**393K**



**547K**



PARTSEUROPE.EU

**PARTS PARTS PARTS**  
UNLIMITED CANADA EUROPE



THE ALL NEW

**545X**<sup>TM</sup>



## Febvre Joins Monster Energy Kawasaki Racing Team

RIDER TO COMPETE IN 2020 MXGP SERIES



Romain Febvre has joined the Monster Energy Kawasaki Racing Team, where he will compete with fellow teammate and THOR rider in the FIM MXGP Motocross World Championship.

"We turn to a new page, but the book is still open and there is a new adventure on the horizon! I'm very happy with this choice; it's never easy to change after five years on the same team, but I'm sure this is the best moment to do it," Febvre said. "The team is 100 percent behind me; they have a strong experience of racing and I'm sure we'll achieve great things together."

KRT team owner Thierry Chizat Suzzoni welcomed Febvre aboard the team, saying they are very happy to have the rider join Desalle for the series.

"I'm convinced that they will join forces to cooperate and get the best from our Kawasaki; it's a great bike which both of them will want to put on the podium. It gives us great satisfaction to see one of this season's GP winners so enthusiastic to join us,"

Suzzoni said. "We are confident that the new KX450, which we have developed so meticulously since the end of last year, has a huge potential." ■

**T**his season, the Kawasaki Racing Team will line up two of the most successful and experienced riders in the series as Romain Febvre joins Clément Desalle to compete on the Kawasaki KX450. The two THOR riders are among the fastest riders in the highly-competitive MXGP class.

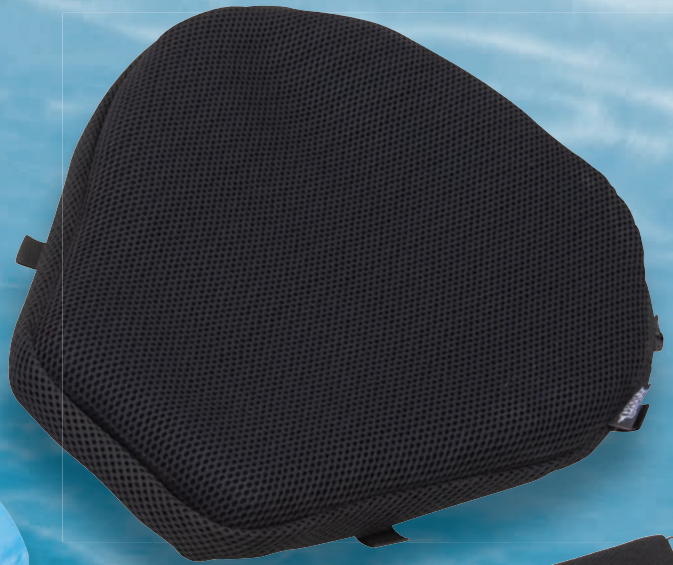
Crowned world champion in 2015 during his rookie season, Febvre, who turned 28 in December, has raced to podium results every year since he joined the MXGP category. Despite missing a third of the 2018 season due to injuries, he claimed five GP podiums with a double-victory in the Czech Republic, won four motos, took four pole-positions, led ninety laps of racing and posted the fastest lap five times.

With his long racing experience, he will form a perfect twin-spearhead alongside Desalle; the Belgian will enter his fifth season with the team.



From left: Kawasaki Europe Race Manager Steve Guttridge, Romain Febvre and Kawasaki Racing Team owner Thierry Chizat Suzzoni.

# COOL COMFORT



**Drag Specialties' line of Cool Comfort Air pads will change your extended riding game.**



ADJUSTABLE PRESSURE VALVE

Pads feature FoamAir cushion technology – a patented, self-inflating design with interconnected FoamAir cells and an adjustable pressure valve allowing you to fine-tune your comfort by distributing your weight across the entire seating area. Channels between the cells allow for ventilation by dispersing heat and moisture. Complete with a 3D mesh cover, the pad can be used with or without the mounting straps.

Cool Comfort quick-attachment air pads are available in five sizes: Small, Medium or Large Cruiser; Sport and Pillion.

See your Parts Europe rep  
for more information.

**PARTS  
EUROPE**  
partseurope.eu

FROM OUR GARAGE TO YOURS  
**DRAG**  
Specialties  
dragspecialties.eu

# OFFROAD

4 DIFFERENT SINTERED compounds for MX & Enduro.



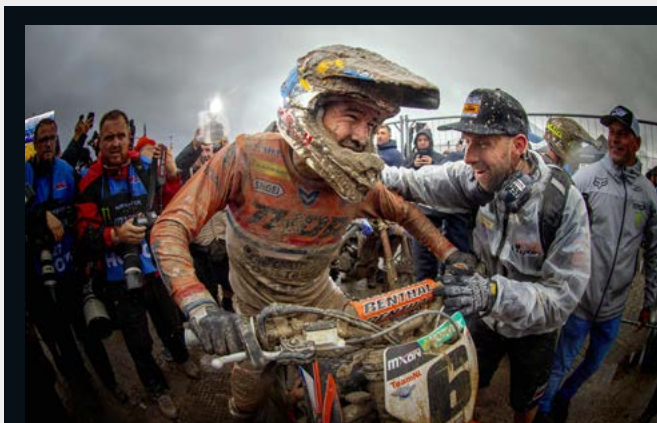
# ROAD

SINTERED / CERAMIC / CARBON compounds for Street, Scooter & Racing.



MOTO-MASTER.COM

# NEWS AND EVENTS



THOR/KTM rider Glenn Coldenhoff is all smiles after an outstanding 1-1 showing that assured Team Netherlands it would get its first-ever Motocross of Nations victory.  
*Photo by Bavo Swijgers*



From left: Team Netherlands' lineup of Calvin Vlaanderen, Glenn Coldenhoff and Jeffrey Herlings celebrate the team's first-ever MXON victory.  
*CDS photo*

## Glenn Coldenhoff, Team Netherlands, Make MXON History

### TEAM ENJOYS FIRST-EVER VICTORY

**T**HOR/KTM racer Glenn Coldenhoff took his country to an astounding victory in the 73rd edition of the coveted Motocross of Nations in Assen. The Dutch Team consisting of Glenn Coldenhoff, Jeffrey Herlings and Calvin Vlaanderen made it a Dutch show back in September in front of His Majesty King of the Netherlands Willem-Alexander.

With weather conditions making the race somewhat of a lottery, organizers did their best to keep the track rideable however that did not deter the international crowd who packed the Assen TT grandstands to cheer on their respective countries.

Coldenhoff's perfect score of 1-1 assured Team Netherlands of its first-ever MXON victory. THOR rider Justin Cooper rocketed to victory in the MX2 class qualification race on Saturday to assure Team USA were in the running. A first moto crash and injured hand would make it nearly impossible to challenge the Dutch for victory. However, Cooper showed his heart by coming out for the second moto to salvage points for the USA.

Team South Africa achieved its first qualification for the MXON final in almost a decade with Michael Docherty and Lloyd Vercueil racing for THOR.

Next year's MXON will take place on the hillside circuit of Ernee in France. ■



The team at Michelin certainly knows how to organize a European vacation. A group of 14 Drag Specialties and Parts Unlimited sales reps and managers got to experience this firsthand on a weeklong visit in November that ping-ponged from France to Spain to Luxembourg to Germany.

The trip was the culmination of a 2019 sales contest that rewarded the sales reps, regional sales managers and even a national sales manager for hitting big sales numbers with Michelin tires.

The trip included visits to the Michelin Technology Center in Ladoux, the company's R&D center and home to its specialized tire proving grounds. It concluded with a trip to Parts Europe's company's headquarters in Trier, Germany where the contingent posed with their Parts Europe counterparts for a massive group photo. *Photos by Dennis Johnson and Michelin*

# There's Only One #1 Belt Drives LTD.






**Custom Billet  
Forward Controls**



**Billet Callipers**





**No one comes close to  
BDL's collection of open  
and closed Belt Drives**



**Industry's largest  
selection of Primary  
and Final Drive Belts**



**Competitor  
Clutch**



**Primo replacement  
Clutch Pack**



## BELTDRIVES.COM

## Geerts Takes Silver Medal in MXON With Team Belgium

**M**onster Energy Kemea Yamaha/Moose Racing rider Jago Geerts clinched the silver medal with Team Belgium at the Motocross of Nations in Assen. It's his second medal in 2019 after finishing third in the FIM World Championship MX2.

It was pouring rain all weekend long in Assen, and the sand track at the famous TT-circuit was transformed into a swamp and the race turned into a survival for man and machine.

After a few hiccups in the first race (MXGP+MX2), Geerts gradually moved up from 29th into the top 10 on the flooded track – a great job against the more powerful 450cc bikes. The teenager was on his way to 10th place when he was stopped by a mechanical issue, three laps from the end.

Geerts was eager to take revenge in the second race (MX2+Open) and was flying on his Yamaha YZ250F. After six laps the rider was already in tenth position, and he kept going like a rocket to finish seventh and best MX2 rider.

This result, combined with the performances of teammates Jeremy Van Horebeek (6-6) and Kevin Strijbos (17-11) puts Belgium on the second step. It was the first podium for Belgium since Ernée in 2015.

“Our goal was to get on the podium and here we are, but it wasn't an easy job in these conditions,” Geerts said. “It feels really good to be on the podium after the terrible Nations in Red Bud last year. A bronze medal in the World Championship and now a silver medal in the Nations: 2019 was a great year for me.” ■

Monster Energy Kemea Yamaha/Moose Racing rider Jago Geerts tackled a soupy wet track during the Motocross of Nations in Assen to help take Team Belgium to a second place finish. It was the teams first MXON podium since 2015.

*Bavo Swijgers/CDS photo*



## Specialists' Best Choice



TRW offers a wide range of high performance brake parts, clutches, handlebars, footrest systems and accessories.

# Verbruggen Secures Open Dutch Championship

## THOR RIDERS DOMINATE PODIUM

**K**jell Verbruggen of Jumbo No Fear BT Racing finally secured the Open Dutch Championship 125cc motocross title at St. Isidorushoeve in the Netherlands. The THOR rider claimed the title honors in style by winning both heats at the event, while teammate and fellow THOR rider Scott Smulders ensured himself of a podium spot by finishing third in both races.

Verbruggen was clearly in championship winning mode, and claimed the pole position with a lap time far ahead of the closest competition. After a good start, he led the pack into the first corner in race one. Keeping up a fierce pace, he won an untroubled race by 40 seconds.

Verbruggen took the early lead in the second race as well. After a crash a few laps in, Verbruggen was able to re-mount and again claim the lead. This brilliant recovery helped him claim the race victory, the overall win, and the Dutch title.

Jumbo No Fear BT Racing teammate Smulders put in a strong performance throughout the day despite a couple of setbacks. In addition to his third place finish, he ended up fourth in the final championship standings. ■

### Overall Dutch Open 125 St. Isidorushoeve Results:

- |    |                         |         |
|----|-------------------------|---------|
| 1) | <b>Kjell Verbruggen</b> | 100 Pnt |
| 2) | Nikita Kucherov         | 83 Pnt  |
| 3) | <b>Scott Smulders</b>   | 82 Pnt  |



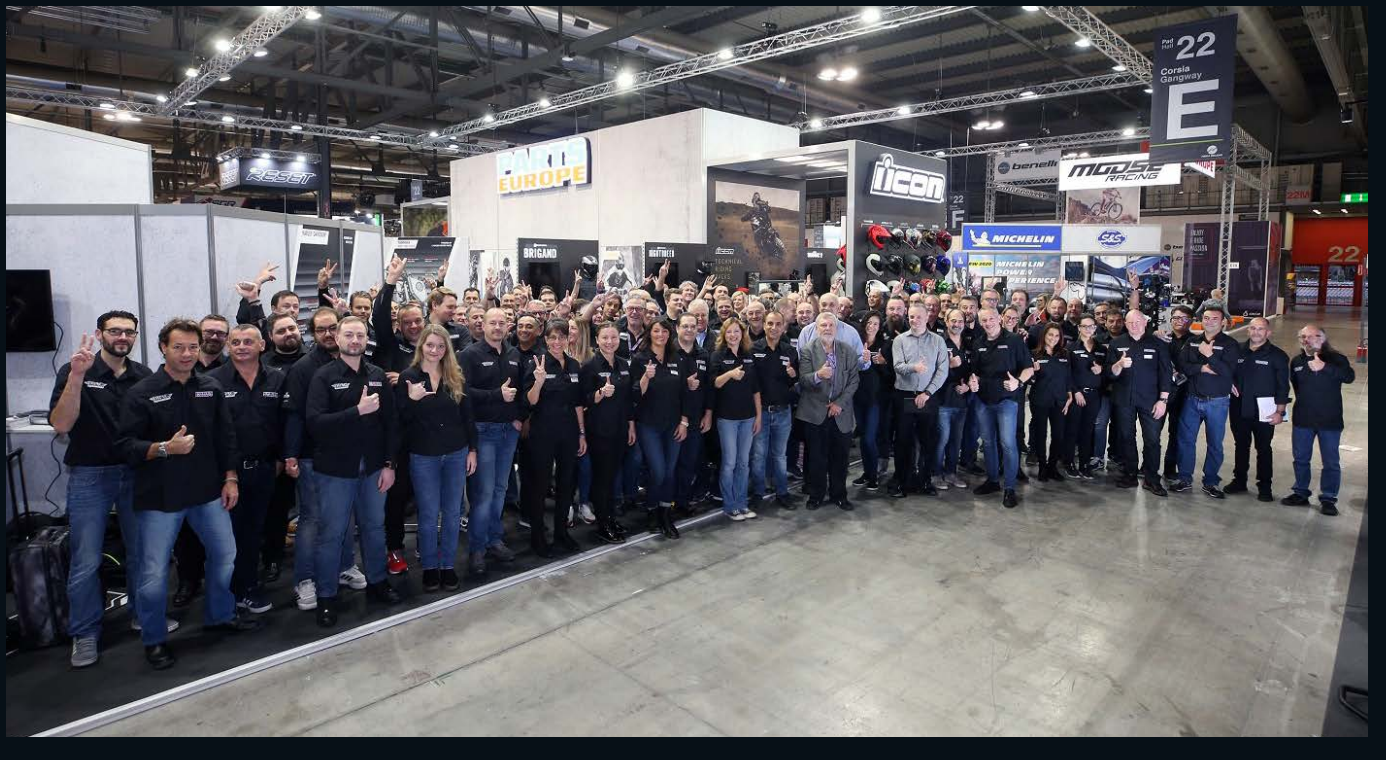
# PUSH IT FURTHER.

## GEOMAX EN97

Developed for FIM enduro competition at the very highest level: grip, confidence and durability to succeed.

## Parts Europe at EICMA 2019

STRATEGIC EXHIBIT BASED ON CATALOG LOCATIONS



**T**he EICMA show in Milan, Italy is the most important event dedicated to the world of two wheels. As it's done since the company was founded 10 years ago, Parts Europe attended the 2019 edition with its popular open booth design.

With 615 sqm, the Parts Europe booth was again one of the biggest at the show. Situated in hall 22 the company hosted 14 co-exhibitors at its booth, in addition to partner brands Drag Specialties, Icon, Moose Racing and THOR.

Launched at the 2018 show, Parts Europe's open booth design was such a hit with show-goers and dealers, they brought it back for 2019. Once again, the booth featured different zones for V-twin, Street, Off-Road, ATV/UTV and a dedicated area focused on maintenance. The company had a number of co-exhibitors integrated into these booth divisions. The segment-specific areas really helped visiting dealers find the products they were seeking. Of course, Parts Europe's talented sales teams and brand specialists were on hand to answer any questions.

For 2019, the EICMA show welcomed nearly 800,000 visitors on two professional days and four public days, from the 5th of November until the 10th of November. These crowds topped the 2018 record of 700,000 attendees – an increase of about 100,000 people! Less than half of the show's 40,000

professional attendees came from Italy, with the rest coming from all over the globe to learn what's hot and new in the motorbike business. Of the 1,187 brands that exhibited





in eight halls, there were manufacturers from 43 different countries showcasing their products.

For those who didn't have the chance to attend EICMA, here's a quick tour around the 2019 EICMA Parts Europe booth.

### **The V-twin Area – Highlights from the *FatBook* and *OldBook***

This part of the Parts Europe booth featured house brands and key partner brands for the V-twin industry. The massive Drag Specialties display at the outside of the booth marked the side of the V-twin area, where a custom 2020 Harley-Davidson Street Bob was on display, showcasing a range of parts from the *FatBook*.

Nearby were co-exhibitor Saddlemen, which specializes in gel motorcycle seats and luggage solutions; Motion Pro, manufacturer of high-quality cables, tools and controls of all powersports segments; AFX Helmets; and high-performance exhaust company, Rinehart Racing.

The V-twin area also featured displays from TechnoResearch, which was showing visitors its lineup of diagnostic tools and equipment as well as seat manufacturer Mustang Motorcycle Products, parts and accessories powerhouse Kuryakyn and exhaust experts Vance & Hines. The area also included a 2019 Harley-Davidson Street Glide that was customized with the help of the *FatBook* and a 2020 Street Rod.



### **The Street Area – Products from the *Street* and *Scooter* Catalogs**

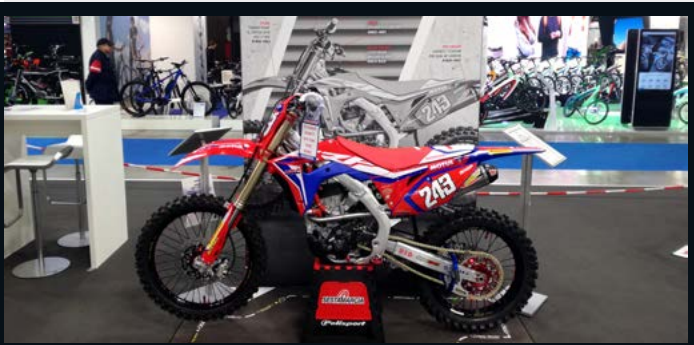
Visitors to the Street area were greeted by a 2016 Yamaha XSR700 and a Vespa 50S 2T before they entered into this section of the booth that featured displays from such brands as Alpinestars, Icon and Icon 1000, Michelin, Moto-Master, and Z1R.

A range of custom bikes and new machines were on hand to show dealers and showgoers just what's possible with Parts Europe's portfolio of brands. The lineup includes an Indian FTR1200 sporting a set of exhausts from S&S Cycles, a 2019 Yamaha T-Max 530 scooter, a 2019 Yamaha R6, and a Ducati Panigale V4S.

### **The ATV Area – Showcasing The *ATV/UTV* Catalog**

A 2015 Polaris RZR XP served as the focal point of this area of the booth. The teams from Moose Racing and Moose Utility Division were on hand to present their newest products for ATV and UTV dealers and fans. Other vendors include eyewear specialists Bobster and winch manufacturer Warn.





## The Off-Road Area – Introducing the *Off-Road* Catalog

Over in the Off-Road, Thor showcased its expansive range of riding gear and products. Handlebar and triple clamp company NEKEN was also on hand with a number of its products on display. To help illustrate just what is possible with the Off-Road catalog, there were a number of bikes customized with a number of aftermarket parts.

First up was one of those popular 2-stroke Yamaha YZ65s that had been outfitted with 14 different parts from the catalog. The show bike lineup also included a new Honda CRF250 and a new Husqvarna TE250, both them featuring plenty of aftermarket parts and accessories.

Of course, it was all new bikes as that *Off-Road* catalog has parts and accessories for a wide selection of model years. A 2006 Suzuki RM125 that looks showroom-new showed just how it was possible to resurrect an old favorite with the right tools and the Parts Europe vendors by your side.



## The Maintenance Area – Help from the *Tires, Tools & Chemicals* Catalog

Parts Europe offers everything your customers need to build and equip their workshops, no matter if they are professional technicians or simply hobby mechanics.

The show bike at the Maintenance area wasn't flashy, but the 2002 Honda CB500 did drive home the point that Parts Europe has a full portfolio of maintenance and replacement items like spark plugs, filters, chain kits, batteries and electrical items. The company also has the tools necessary to replace and update those products. This bike was a great example for existing and potential Parts Europe dealers that the company has what they need for the latest bikes, as well as for older ones.

Being able to answer to any type of needs and customer requests is Parts Europe's daily focus in order to enlarge its portfolio with new brands, products and fitments.

## Showbikes for 2019

All of those customized showbikes on display in the various market segment booths were chosen intentionally because they were popular models for many riders across Europe. They are the top sellers in different markets and represented ATV/UTV, enduro, motocross, scooters, sportbikes, V-twins, and even youth off-road. The company used only bolt-on parts available directly from the seven catalogs to upgrade the machines. In most cases, a build sheet with product names and part numbers was available for referral.

The endeavor is a great example of Parts Europe's Demo Bike Program, which it developed to help dealers promote and display hard parts and accessories in their own showrooms. The displays help customers know just how those parts can be assembled to help create their own dream bikes. Customizing a showroom bike also helps increase its value, but adding on custom aftermarket items make that a big upgrade over the stock setup.

Parts Europe developed the Demo Bike Program as a key marketing tool and it has already been proven to be a valuable method for giving dealers and consumers an idea of just what is possible.

Offering the service and the availability of a strong portfolio is one thing, but also helping its dealers to increase their sales by better showing what they can offer is also part of their slogan, "We Support the Sport."

The company supports the powersports industry by creating extra interest from the riding community, and then encouraging them to contact their local Parts Europe dealers for the order. Parts Europe says it plans to use newsletters and extra information like this to strengthen the Demo Bike Program. You can contact your sales rep for more information. ■



## Powersports | V-Twin Performance Gaskets

Cometic is dedicated to customer satisfaction and provides quality products, delivered on time at a competitive price, designed for each customer's specific application. Cometic's gaskets are the industry standard for championship-winning teams across multiple disciplines of both professional and amateur motorsports. Cometic Gasket is a wholly owned family business and has grown into a global leader and innovator in the highly competitive engine supplier marketplace.

ENGINEERED, VALIDATED AND MANUFACTURED IN CONCORD, OHIO, USA



Distributed By  
**PARTS  
EUROPE**

## The Unlikely Champions

### TEAM PARTS EUROPE WINS

**T**eam Parts Europe has been crowned 2019 European Classic Endurance Champions and no one was more surprised than the team itself

Formed in 2018, Team Parts Europe consists of riders Dave Crampton and Parts Europe's UK rep Chris White. That first year they entered the entry-level Superstock class to gain experience racing on the continent and in endurance racing. The season went well as they won the championship, but due to a lack of entries for some races the win felt somewhat hollow.

Therefore, for 2019 the team decided to enter the premier Open Class, which is made up of the fastest bikes and most experienced teams. Rivals include Team Phase One, which has been competing since the 1980s, and is the last privateer team to win the World Endurance Championship, and field former Grand Prix and National Championship riders. Others included Team Force, which uses a pool of Belgium riders with 14 world titles among them, and Team Classic Suzuki, with a very special Katana ridden by various riders including Guy Martin.

The team chose a Suzuki GSXR1100 that was built on a budget of €15,000, using many parts selected from the Parts Europe catalogues. Completed six days before the first round, the bike produced 165 horsepower and weighed 170kg.

The first round was at Paul Ricard in France and the team qualified mid-field. At the LeMans start, White jumped

on the bike only to find the starter failed. A push from his teammate and the bike started and Team Parts Europe was away – dead last. On lap three the clutch cable broke. Over the next four hours the riders got down to learning the bike, increasing the pace and hoping for no more problems.

It turned out, that with the exception of Team Force, all the rival teams were having issues too. With 20 minutes left, Parts Europe moved in to second position, which they held to the checkered flag. The winners were Team Force, second Parts Europe, third Team Classic Suzuki.

### Bent Forks and No Fairing

The team arrived for round two at Oschersleben in Germany and recruited two new mechanics in the form of Parts Europe's German Reps Jens Kloos and Steffen Karst. They would help with any language problems as well as with keeping the bike on track.

A trouble free qualifying saw Team Parts Europe in the top ten of the fifty five starters. Crampton took the start and made a great opening lap. At turn two a bike put oil on the track and every bike from second to tenth crashed out leaving Team Force way out in front and Team Parts Europe in the gravel.

Twenty minutes later the bike was being pushed down pit lane looking pretty badly damaged, but with the efforts of





Dave Crompton (left) and Chris White

Kloos and Karst the bike rejoined the race in last place. The bike had no rear brake, bent forks, bent handlebars and no fairing, so once again the riders would have to push hard from last position on a bike that was only just rideable.

It soon became clear that of the nine bikes that crashed, they were the only ones back on track. The nearest contenders were out except for Team Force. Thirty minutes later Team Force limped in to pit lane with a broken engine and retired. The riders continued pushing for the next three hours and took the checkered flag in third position. Team Parts Europe was now leading the championship.

## Chainless

The third round at Spa Francorchamp in Belgium featured an awesomely fast, super long circuit that neither rider had experience on. As this was the home race for Team Force, the riders took an approach of damage limitation. With no machine issues both riders struggled to learn the 7km circuit and could only manage a midfield grid position with Team Force on pole.

Crompton started the race and initially struggled to make progress up the field, but gradually started working his way up the leaderboard. At 40 minutes, race leaders Team Force was in the pit lane ready for their first fuel stop, but no bike arrived. Ten minutes later the bike was pushed up pit lane undamaged but not running with an electrical problem that sidelined the team for forty minutes.

The Parts Europe riders kept improving their lap times, and at the two hour mark were in second position. Ten minutes later the bike disappeared from the timing screens. Twelve minutes later the bike wheeled in to the pit box missing the chain. A new chain was fitted and the bike was back on track.

Team Parts Europe ended up in fourth and Team Force was sixth. Although disappointed at not being on the podium for the first time in two years, the team had increased its championship lead at a challenging circuit.

## Aiming for Top Six

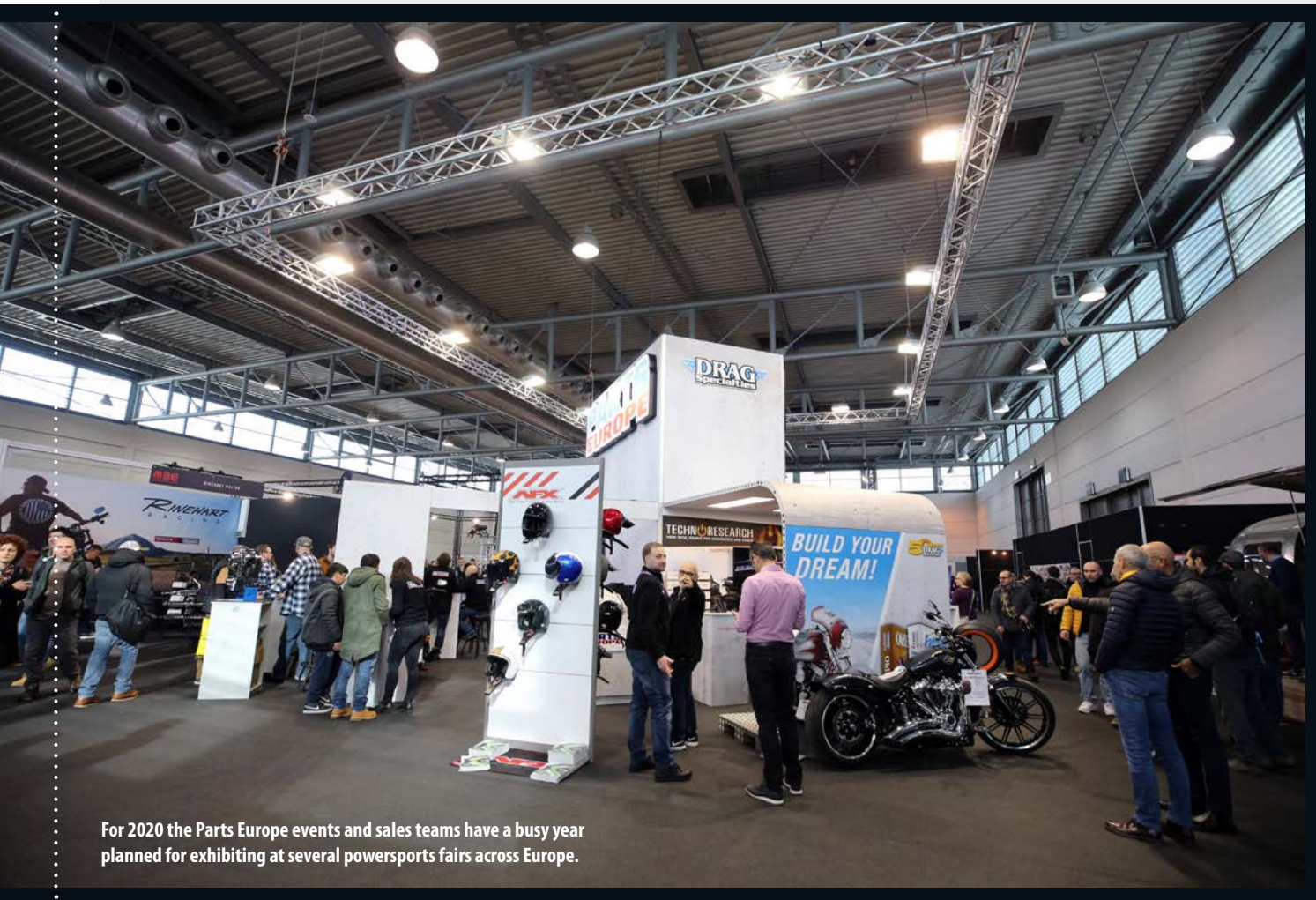
Team Parts Europe came into the fourth and final round at Misano in Italy with a rebuilt engine and chassis. Qualifying went well with no drama and the team started in thirteenth position out of fifty starters.

To win the championship it was essential to finish in the top six. If the riders did not and Team Force won, then the championship would slip away. The riders started the race with the mindset of not racing, but being gentle with the bike to ensure they made it to the end. White made the nighttime start, and for the first thirty minutes held position as Team Force led the way.

At the first fuel stop they were in third position as Dave took over and settled into a safe pace, avoiding risks. Fifty minutes later luck was on Team Parts Europe's side as Team Force had to retire when they blew up another engine, thus securing the championship.

Despite being new to the class, having the lowest budget and no manufacturer support, with riders that have never been world champions, Team Parts Europe pulled off the win by simply keeping going.

Every team member, from the mechanics to the time keepers did their jobs perfectly. When there was a crisis, it was dealt with quickly and no one ever thought of quitting. As one of the team's sponsors put it to White, "You're just too stupid to stop." White, responded, "He's probably right." ■



For 2020 the Parts Europe events and sales teams have a busy year planned for exhibiting at several powersports fairs across Europe.

## It's Showtime!

### TRAVELING A BUSY FAIR SEASON

**W**hen November hits Europe, it's more or less clear to everybody that motorbike riding season is over. However, once those bikes are in storage, it's time for the powersports fair season to begin.

The lineup of fairs starts with BigTwin in Holland, followed by the EICMA in Milan and the Custombike show in northern Germany. Parts Europe attends them all. After a short

break for Christmas and New Year's Eve, things kick back into overdrive and the Parts Europe event and sales teams hit the road.

The first stop after this is the Motor Bike Expo in Verona, Italy in January. While not as-

sociated with any particular bike segment, the show offers something for everyone, and has a close connection with the custom motorcycle scene all over the world.

Show highlights here include the yearly selection of the King of the Verona, who is honored with the MBE Award for customization, the Lowrider Bike Show, prize giveaways, and a jaw-dropping stunt bike show.

The Parts Europe booth will have some specials this year in Verona. In response to the "flat track wave" that has hit Europe, the company will be showcasing the complete Hallman Racewear collection from Thor. The company will also have a Honda CB650 in its booth that will display various parts from SW-Motech, a new vendor for Parts Europe.

The booth will also feature products from co-exhibitors Memphis Shades, Saddlemen, S&S Cycle and Rinehart Racing. Visit with Parts Europe's fantastic team and find new customizing ideas at MBE Verona in hall 1, booth 10H.

**MBE**  
MOTOR BIKE EXPO



From Italy in Southern Europe, Parts Europe will head to MC Mässan, the Swedish motorbike show that takes place in Gothenburg instead of Stockholm where it was held last year. The show runs for three days in late January and is open for both professionals and consumers.

The MC Mässan show will feature all the new 2020 models, as well as all the hot new products for the year. Additionally, there will be lotteries for various charities during what is considered a very family friendly show. Visit with the Parts Europe Scandinavian Sales team Stand A01:02.

The next stop for Parts Europe is Finland for MP20 Helsinki in late January, early February. This motorbike fair will feature the latest models of the new season – from scooter and V-twin to ATV and Watercraft. The fair also offers a special indoor test ride track for demo rides.

However, it takes more than a bike show to get some Fins out of their warm houses and making their way through the snow to Helsinki. The Finnish bike expo offers a variety of side events and show highlights, one highlight being the Petrol Circus Custom Bike Show, the biggest custom bike competition in Finland. Here more than 100 participants will show their customized bikes for the crowds.

At this year's show there will be an auction of a custom Indian Scout built by Janne Juntunen, the winner of the 2019 Petrol Circus Custom Bike Show. People have been following the progress of the build of "Nightshift II" on its own YouTube channel – Nightshift 2: The Charity Bike – where Juntunen posts regular video updates. Revenues from the

auction, and part of the fair ticket revenues, will be used to support charity projects of Finnish motorbike clubs and organizations. There will also be a music-related competition called MP Rock and the crowning of Miss MP.

After Finland, Parts Europe and its French sales team are headed to Lyon, France for the Salon du 2 Roues de Lyon, a famous French motorbike fair for dealers and consumers. France country sales manager Vincent Arnoult said the company's presence at the 2019 fair was a big success, so this year should be great.

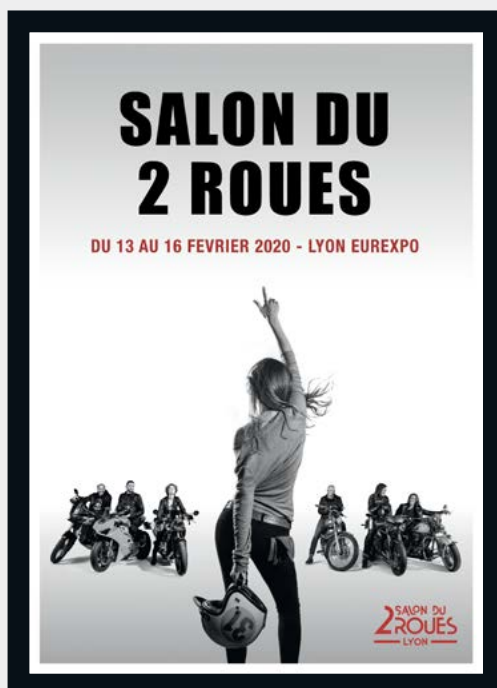


The Parts Europe booth will be 180sqm and located in hall 4. Look for co-exhibitor Akrapovič, which will be on hand with its exhaust lineup. In Lyon, the first two days of the fair are reserved for dealers and professional attendees, while the next two days are open to the public. The 2019 show attracted more than 62,000 visitors and this year more are expected.

More than 350 exhibitors have already registered their booths, and a bike show is predicted to showcase more than 1,000 custom machines from amateur and professional builders. This year there will be a custom bike contest reserved only for those amateur builders.

From Finland, Parts Europe will head to shows in Spain from 16th to 19th April 2020 for the Vive la Moto! show in Madrid, and to the Expomoto show in Portugal from 7th until the 10th of May.

With a schedule like this, there's bound to be a show near you where you can meet up with the Parts Europe sales staff and get the chance to check out products from the company's growing portfolio of brands. ■



## LeoVince Joins Parts Europe Product Portfolio

The LeoVince logo is displayed in a white, cursive font on a black rectangular background. A thin horizontal line with green and red segments is positioned below the text.

**I**talian exhaust manufacturing specialist LeoVince has joined the Parts Europe product lineup, a move that now gives dealers access to a newly incorporated product range of exhaust systems for the dual-sport, street and scooter segments, as well as products from LeoVince partner brands, Sito and Sito Plus.

The LeoVince brand history goes back to 1954 when the company started developing and producing replacement silencers for 2-stroke and 4-stroke motorcycles. In 2014, the company reorganized and started a successful agreement with Parts Unlimited to distribute products in the United States.

"For LeoVince, signing the distribution contract with Parts Europe is certainly a very important step and we're all very proud and satisfied for having reached such an agreement," says Roberto Morone, LeoVince CEO. "The partnership with Parts Europe is the natural consequence of the long and solid collaboration we have since 2014 with our exclusive distributor Parts Unlimited in the U.S. Parts Unlimited is helping us make the name of LeoVince in the United States



with outstanding results and we are sure to be able to replicate the same success with Parts Europe."

Every LeoVince product is developed internally in their R&D department that is equipped with all the machinery necessary for the various phases of the process – from the 3D modeling to the manufacturing of prototypes, and from dyno testing to homologation.

"By cooperating with LeoVince, Parts Europe can add the high-performance exhaust systems of the Italian manufac-



turer to its range, thus fulfilling our own standards to offer the right accessories for all types of motorcycle,” says Xavier Williart, Parts Europe Sales Manager.

Thanks to the ultra-modern logistics center at the Parts Europe headquarters in Wasserliesch, dealers profit from the high stock availability and fast delivery. More and more dealers see Parts Europe as a reliable partner who supports them in running their own business model in a successful way.

“Parts Europe is one of the main players in the motorcycle market and I am sure it will increase the presence of the LeoVince and Sito brands throughout the European territory,” says Stefano Patelli, LeoVince sales manager. “With Parts Europe, in fact, we will begin to sell our products in more than 30 countries, including the ones currently not served by our sales network, granting fast and easy accessibility to all of our products.” ■



## Meet the Social Media Team!

In this day and age, having a relevant social media presence is imperative. Additionally, for a business, that presence had better communicate the soul and passion of that company.

The powersports fanatics at Parts Europe live the company's passionate motto – We Support the Sport! – a message that's as vital to the company as an engine is to a motorcycle. If that message isn't roaring loud and clear, it's time for a tune-up.

For Parts Europe, that meant tuning up the company's social media team. Since January 2019, its social media team has been transforming the company's social channels into the visual evidence of its passionate commitment to the powersports industry.

Online, the Parts Europe team brings dealers and fans the latest news on its products, behind-the-scenes access to riders and races, VIP interviews, video reviews, technical tips, brand trainings, giveaways, and much more.

The company's social media presence includes:

**@PartsEurope.Official** on Instagram,  
**Parts Europe** on Facebook and YouTube,  
 and its blog at [www.blog.partseurope.eu](http://www.blog.partseurope.eu).



Every one contributes to the Parts Europe channels, but its social media team is responsible for making the whole thing run. Let's meet the team. ■



- » **Mandy van Leeuwen** (left)  
 – Web content administrator  
 Riding expert, research and content development, customer service
- » **Trisha Cole** (middle)  
 – Social media correspondent and web content administrator  
 Content and video creation, strategy, future development
- » **Aurora Balogy** (right)  
 – Team-lead web service desk and content management  
 Big picture thinking, video editing, coordination with company communications



Front row, from left: Trish Cole and Dani Ortiz. Back row, from left: Andrea Romano, Maria Giulia Padovani, Adrien Van Beveren, Fernando Pasquet, and Thomas Cabon.



A longtime fan of the *FatBook*, Curtis Hofmann made judicious use of the catalog to build a Bagger worthy of appearing on its cover.



The 2020 *FatBook* is here and the cover bike is a stunner. As always that giant catalog is chock-full of everything it takes to transform a Harley-Davidson, this year more so than ever, and Curtis Hofmann of Hofmann Designs in Buffalo, Minnesota, USA made spectacular use of it all.

Pulling custom parts and accessories from just about every section of that new 2020 Drag Specialties catalog this up-and-coming builder took a stock 2019 FLHT Standard model Harley and turned it into something that's anything but standard.

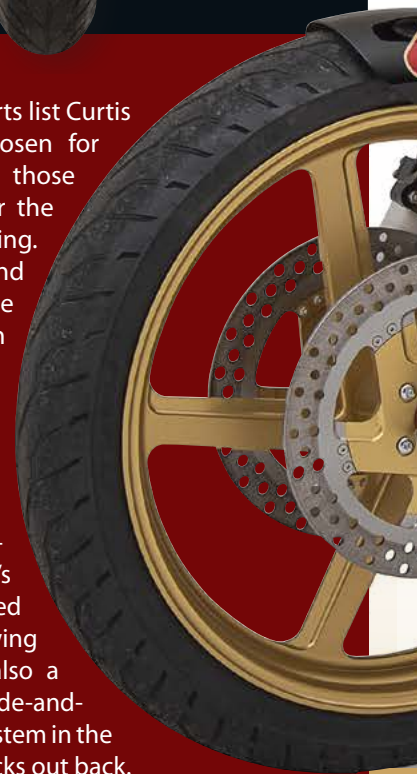
Of course, that's no surprise there. A *FatBook* Cover Bike is supposed to show off what's possible with what the aftermarket has to offer. And given free rein to do exactly that – a situation any one of us would love to find ourselves in – Hofmann made the most of it, with carefully planned restraint.

The hallmark of any Hofmann Designs build is coherent custom style coupled with reliable, useable performance. The goal is always a complete, well-rounded motorcycle. A Hofmann Designs build will not only look great, it'll be a usable, every-day/all-situations-comfortable bike.

Everything on that *FatBook* parts list Curtis settled on was not only chosen for the all-around performance those parts would add, but also for the custom look they would bring. Along with the lightweight and gold-anodized Performance Machine Pro-Am wheels with matching rotors, there are super-performing MJK radial-mount brake calipers and Pirelli Night Dragon tires.

The abbreviated look of an Arlen Ness Pro short front fender and one of Russ Wernimont's 8½-inch rear fenders is matched with a machined-aluminum swing arm from Alloy Art. There's also a full Legend Suspensions ride-and-handling upgrade, the AXEO system in the front and remote reservoir shocks out back.

The Harley's engine and drivetrain got a similar looks-plus-performance makeover, form with plenty of function.



# THE 2020 *FATBOOK* COVER BIKE

## YEAR OF THE PERFORMANCE BAGGER



With parts picked from throughout the new *FatBook*, Curtis Hofmann of Hofmann Designs put together a 2020 cover bike that screams Performance Bagger. That aggressive stance comes courtesy of a host of parts, including THRASHIN Supply handlebars, Trask risers, Pirelli Night Dragon tires, and gold anodized Pro-Am wheels by Performance Machine.

Look at that profile – S&S Cycle Super Stock air cleaner, Ness 10 Gauge covers, an Alloy Art swingarm, chain-drive conversion, Bassani pipes and a Drag Specialties seat are just some of the many additions.



From stem to stern, this custom FLTH Standard is pure *FatBook*. It's not just good looking at glance either, with performance parts from Alloy Art, Bassani, Dynojet, Legend Suspension, MJK, and S&S Cycle, this one's built to boogie. Finishline Custom's paint and graphics tie everything together.

The 107-inch Milwaukee-Eight is fully dressed in a full complement of Arlen Ness 10 Gauge covers and tubes, as well as a 10 Gauge stabilizer link. There's also a power-building Bassani Road Rage III 2-into-1, an S&S Cycle Super Stock air-cleaner kit and a Dynojet Power Vision fuel-management system. A chain-drive conversion using components from Alloy Art, Chris Products PBI, BDL and EK Chains sends this enhanced M8 power out back, controlled with an MJK adjustable shifter kit.

Hofmann did more than just bolt on parts, though, including his own Hofmann Designs carbon-fiber saddlebags, saddlebag lids and side covers. Along with all the nut-and-bolt wrench work, this bike got the kind of detail-attention that separates a standout from a stocker. The frame, for example, has been smoothed out with all the factory hiccups and bumps removed, the wiring is all internal and totally hidden, all the hardware is Diamond Engineering 12-point.





## 2019 HARLEY-DAVIDSON FLHT STANDARD CUSTOMIZED BY HOFMANN DESIGNS / BUFFALO, MINNESOTA

A black-and-red graphic scheme by Finishline Custom Paint in Corcoran, Minnesota contrasts with the gold-anodized accent of the Pro-Am wheels, THRASHIN Supply mid-bend handlebars, the rear sprocket, EK chain and various mounts throughout, resulting in a finished look that is purposefully stunning. Clearly, this is an FLHT Standard built for miles of fun with little doubt about its ability to deliver.

Hofmann's build style is what first caught the eye of everyone at Drag Specialties. It's what led to his being tapped for the construction of the 2020 *FatBook* cover bike. And, it looks like that admiration was a two-way street. "The *FatBook* has always been my go-to catalog for whatever bike I'm customizing," he says. "There's a lot in it." This year more than ever, with a Hofmann Designs custom on the cover leading the way. ■

PART #	DESCRIPTION	2020 PAGE #
<b>CHASSIS</b>		
0801-1116	Drag Specialties Predator III Double Diamond Seat	24 FB
0201-2333	Performance Machine Pro-Am Front Wheel 21" x 3.5"	1719 FB
0202-2162	Performance Machine Pro-Am Rear Wheel 18" x 5.5"	1719 FB
0305-0287	Pirelli Night Dragon Front Tire 120/70-21"	136 T
0306-0598	Pirelli Night Dragon Rear Tire 180/55-18"	136 T
1401-0679	Arlen Ness Pro Short Front Fender	1597 FB
0403-0152	Alloy Art Lower Fork Legs w/Fender Mounts	1536 FB
0407-0192	Drag Specialties 49mm Fork Seal Kit	878 FB
1301-0142	Alloy Art Machined Aluminum Swing Arm	1496 FB
0414-0543	Legend Suspension AXEO 21" Front Suspension System	1541 FB
1310-1886	Legend Suspension 13" Remote Reservoir Rear Shocks	1557 FB
1313-0167	Legend Suspension Shock Reservoir Mounts	1557 FB
1401-0645	Russ Wernimont Designs 8.5" Rear Fender	1609 FB
2310-0673	Klock Werks 4" Flare Windshield	8 FB
0510-0202	Performance Machine +1" Extended Kickstand	499 FB
3501-1214	Arlen Ness 10-Gauge Saddlebag Hinge Covers	159 FB
3501-1211	Arlen Ness 10-Gauge Saddlebag Levers	164 FB
N/A	Hofmann Designs Carbon Fiber Side Covers	N/A
N/A	Hofmann Designs Carbon Fiber Saddlebags	N/A
N/A	Hofmann Designs Carbon Fiber Saddlebag Lids	N/A
<b>BRAKES</b>		
1701-0652	Alloy Art Radial Black Caliper Mount Right	1536 FB
1701-0654	Alloy Art Radial Black Caliper Mount Left	1536 FB
1701-0633	MJK Radial Mount Mono Block Left Brake Caliper	1321 FB
1701-0634	MJK Radial Mount Mono Block Right Brake Caliper	1321 FB
1710-3739	Performance Machine Pro-Am 11.8" Left Front Brake Rotor	1309 FB
1710-3741	Performance Machine Pro-Am 11.8" Right Front Brake Rotor	1309 FB
1710-3743	Performance Machine Pro-Am 11.8" Rear Brake Rotor	1309 FB
1742-0486	Drag Specialties Clutch Line Adapter	820 FB
1742-0065	Drag Specialties Brake AN 3 Hose Adapter	1377 FB
BL 992-31CH	Goodridge Brake Light/Banjo Bolt	1392 FB
1742-0098	Goodridge Brake Light/Banjo Bolt Rubber Boot	937 FB
1742-0148	Russell 3/8" Pro System II Straight Banjo Fitting	1385 FB
1742-0150	Russell 3/8" Pro System II 35 Degree Banjo Fitting	1385 FB
1742-0066	Drag Specialties 3/8" Union Fitting	1377 FB
993-03-31CH	Goodridge 10 mm x 1.0 Double Banjo Bolt	1333 ST
992-03-31CH	Goodridge 10 mm x 1.0 Steel Banjo Bolt	1333 ST
44516-6	Goodridge 3/8" Crush Washers	1391 FB
1740-0001	Drag Specialties Universal Nylon Brake Line	1377 FB
<b>DRIVELINE</b>		
1210-2328	Alloy Art 51 Tooth Cush Drive Sprocket	844 FB
1212-0526	Chris Products PBI 24 Tooth .750 Offset Transmission Sprocket	841 FB
D5-360182	Belt Drives LTD. Transmission Sprocket Lock Plate Kit	842 FB
1223-0659	EK Chains 530 x 120 Link Chain w/Gold Finish	839 FB
1223-0282	EK Chains 530 Connecting Link w/Gold Finish	839 FB
1105-0213	Arlen Ness Black 10-Gauge Transmission Top Cover	774 FB
1105-0110	Arlen Ness Black 10-Gauge Hydraulic Clutch Actuator	814 FB
0934-5961	Cometric Primary Cover Gasket	861 FB
<b>MOTOR</b>		
0940-1663	Arlen Ness Black 10 Gauge Rocker Box Top Covers	749 FB
0940-1659	Arlen Ness Black 10 Gauge Cam Cover	752 FB
1800-2201	*Bassani Road Rage III Short 2 into 1 Exhaust System	425 FB
0934-5981	Cometric Engine to Transmission Gasket	861 FB
0935-0990	Cometric Coolant O-Rings	860 FB
0933-0128	Arlen Ness 10 Gauge Engine Stabilizer Link	745 FB
0940-1661	Arlen Ness 10 Gauge Lifter Block Covers	698 FB
0928-0090	Arlen Ness 10 Gauge Pushrod Tube Kit	699 FB
<b>FUEL</b>		
1020-2325	*Dynojet Power Vision Fuel Management System	556 FB
1010-2407	*S&S Super Stock Stealth Air Cleaner Kit	598 FB
1014-0289	*S&S Stealth Teardrop Carbon Fiber Air Cleaner Cover	599 FB
2201-0167	Paul Yaffe Bagger Nation Steel Dash Kit	1451 FB
<b>CONTROLS</b>		
0601-4144	THRASHIN Supply Mid-Bend 1" Handlebars	1136 FB
0602-0824	Trask Assault 8" Reverse Cut Riser w/ Clamp	1163 FB
0602-0956	The Speed Merchant Solid Riser Bushings	1168 FB
0610-1954	Drag Specialties Black Wide Clutch and Brake Levers	1180 FB
0630-0543	Performance Machine Contour Rental Wrapped Black Grips	1204 FB
1621-0631	Joker Machine Serrated Black Driver Floorboards	1648 FB
1602-1152	MJK Adjustable Shifter Kit	833 FB
1610-0562	MJK Adjustable Brake Arm Pedal Kit	1396 FB
<b>LIGHTING/ELECTRICAL</b>		
2001-1747	Custom Dynamics Pro-Beam 7" Black Headlamp	972 FB
2120-0934	Kuryakyn Headlight Adapter Harness	957 FB
2020-1309	Joker Machine Black Streamliner Front LED Turn Signals	1020 FB
2040-2460	Kuryakyn/Kellerman Atto LED Turn Signals/Brake Lights	1023 FB
4405-0583	Kicker PX 2 X 50 W Bluetooth Amplified Controller	82 FB
4405-0577	Kicker PS 6.5", 2 Ohm Coaxial Speakers	83 FB
4405-0588	Kicker Batwing Speaker Grilles	100 FB
<b>MISCELLANEOUS</b>		
2401-1144	Diamond Engineering 12-Point 17-19 Transformation Kit I	1753 FB
2401-1174	Diamond Engineering 12-Point 17-19 Transformation Kit II	1753 FB
2401-1172	Diamond Engineering 12-Point 14-19 Transformation Kit III	1753 FB
Paint, Graphics & Bodywork by Finishline Custom Paint, Corcoran, MN		

**CHART LEGEND**  
 FB = FatBook  
 T = Tire Catalog  
 ST = Street Catalog  
 DRS-225 = January 2020



# Rain Rider

## Waterproof Jacket and Gloves



Icon's new Tarmac jacket and gloves provide sleek, understated styling as well as the company's highest level of waterproofing. It also features D30 impact protectors in the shoulders, elbows and back.

**W**ho cares what the weatherman says? When your customers have somewhere to go, the Icon Tarmac jacket and gloves get them there no matter what's happening outside. The sleek, graphics-free styling of the Tarmac line creates a refined-looking barrier against water.

Not only does this gear carry Icon's highest level of waterproofing, but the Tarmac jacket has passed water resistance testing according to standard EN 343 Level One. That means the Tarmac jacket will get a rider through heavy rain, wet snow and even some pressure. The waterproof materials are all kept in place with YKK Aquaguard zippers to make sure that nothing seeps inside.

The waterproofing on the Tarmac jacket comes courtesy of both the materials and construction methods. The chassis is made of a four-way stretch HYCOR waterproof/breathable material that is fully seam taped with a Teflon DWR coating. Combined with durable ballistic reinforcement panels, the jacket is watertight and tough, but still flexible enough to be comfortable. Icon minimizes the bulk and maximizes the Tarmac's versatility, adding a micro-mesh liner, underarm vents and a rear exhaust port. The venting can be adjusted for internal temperature control.

The Tarmac has reflective trim on the outside to increase visibility – after all, there aren't any loud graphics to draw attention. Inside, the Tarmac jacket features D30 impact protectors in the shoulders, elbows and back. D30 impact protectors are flexible enough that a rider can maintain a full range of motion. At the same time, the compact size of each piece helps reduce bulk so a motorcycle jacket can look more like a fashion jacket without giving up any asphalt resistance.

In keeping with the sleek, understated styling of the Tarmac jacket, it comes in only two color choices, black or gray. The Tarmac has Icon's Sport Fit, which features slightly pre-curved arms and loose tailoring that isn't baggy.

The complementary black Tarmac gloves are a perfect example of simple gear with a lot of versatility. The Icon Level 3 waterproofing is just the start of the features that make the Tarmac a go-to glove for every riding situation. The cowhide leather used for the palm and fingers is supple and strong, while a poly stretch backhand ensures dexterity and a high level of comfort. The mid-length wrist layers well with the Tarmac jacket to make sure water stays on the outside.

A D30 knuckle insert adds another barrier to the backhand. The Tarmac also features touchscreen-friendly material on the index finger and thumb, so handheld devices can be operated without requiring the gloves to be removed. ■

» *Talk with your Parts Europe rep about the waterproof Tarmac jacket and gloves, and learn more about Icon's all-weather gear at [www.rideicon.com](http://www.rideicon.com).*

ICON

# AIRFORM



## CHROME YOUR DOME

CUSTOMIZE YOUR ICON AIRFORM HELMET WITH MULTIPLE SHIELD, DROP SHIELD, AND SPOILER COLORS



PARTS  
EUROPE



RIDEICON.COM

**QUALIFIER**



**PARTS PARTS PARTS**  
UNLIMITED CANADA EUROPE

[PARTSEUROPE.EU](http://PARTSEUROPE.EU)



# 2020



---

## QUALIFIER RACEWEAR COLLECTION

**MOOSE RACING®**

MOOSERACING.COM



# Hard Part Overhaul

## Off-Road Performance Products



Lithium battery

**W**inter is the perfect time to freshen up an off-road bike in preparation for the spring riding season, and that includes swapping out hard parts that can give a bike a boost over the stock setup. With a long list of hard parts available, Moose Racing has everything a customer needs for an off-season overhaul.

Among the newest hard parts from Moose Racing are lithium batteries, two different styles of handlebars, rotors, and clutch and ignition covers.

The Moose Racing lithium battery is a lightweight, maintenance-free unit that doesn't use any heavy metals or

hazardous acid. That means the battery can be mounted in any direction, so it has a wider range of fitment options. A lithium battery lasts significantly longer than a lead-acid battery, too.

Another bonus of swapping to a lithium battery is that the weight is as much as 60 percent lighter than a lead-acid battery, giving riders another chance to shave some weight off of their bike. The Moose Racing lithium battery has a fast recharge time of just six minutes, and it includes a built-in battery capacity indicator. The battery has a shelf life of up to 12 months before it needs charging.

The two new handlebars from Moose Racing are the Competition SE and the Flex SE, which are both constructed from high-quality 7010-T6 aerospace-grade aluminum. The Competition SE has a 22mm handlebar that is designed for maximum strength. The inner wall thickness of the handlebar is a solid 5mm, and an added crossbar increases its stability.

The Flex SE handlebar is an oversized, 28.6mm handlebar made with variable diameter sizes and wall thicknesses. The variable sizing throughout the handlebar allows it to still work well with standard-sized controls, including a 28.6mm diameter in the clamping area. Like the Competition SE, the Flex SE is designed for strength. That oversized design is stronger than a classic bar, but it still offers a weight savings over stock, weighing in at up to 40 percent lighter. Both of the handlebar designs feature a knurled clutch side for better grip retention.

Moose Racing already has a number of brake rotor options, but the company has added a standard rotor to the lineup. The standard rotor is a simple replacement since it fits all OEM standard brake calipers, making it easy to upgrade the bike's braking system.

The standard rotor is made from a high-content stainless steel, which provides greater friction compared to the OEM standard rotors. The laser-cut design is carefully



Competition SE (top) and Flex SE (bottom) handlebars

engineered to provide improved braking power and cooling, even under extreme braking. The standard rotor is a non-floating design that easily bolts directly to the hub.

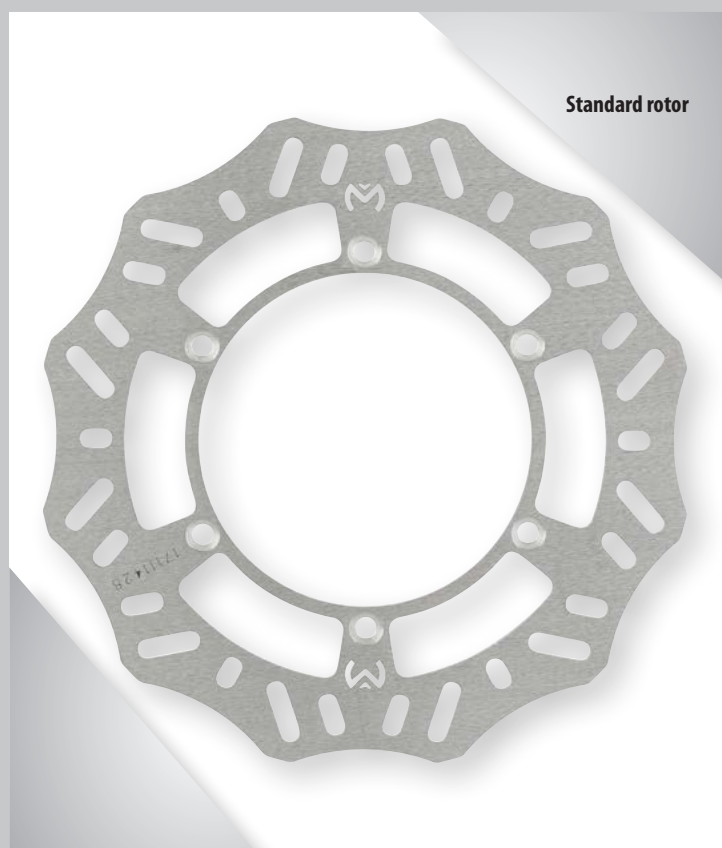
Like the standard rotor, the Moose Racing clutch and ignition covers are easy to swap out while offering improvements over the stock components. The covers are made from a high-grade 6060-T6 forged aluminum, making them stronger than standard OEM covers while also improving heat dissipation. The clutch covers are actually 2mm deeper than stock, which expands the oil capacity and helps aid cooling during riding. A hard-anodized finish tops off the clutch and ignition covers to add even more durability.

In addition to the new Moose Racing hard parts, the company has plenty of other parts that update and improve an off-road bike. The new standard rotors can be paired with Moose Racing brake pads, which are available in three different styles. M1 sintered brake pads are ideal for dry conditions, and the high-friction S-57 sintered metal compound provides maximum stopping power.



Clutch cover

Ignition cover



Standard rotor

XCR brake pads are a great choice in wet conditions, and the sintered compound is backed by a thick zirconium-based ceramic to protect the brake fluid from heat. Qualifier brake pads offer progressive feel and excellent rider feedback, and the latest-generation aramid fiber material results in no rotor wear and quiet braking.

The new Moose Racing clutch covers pair well with the complete clutch kits, which are designed to out-perform the OEM version. Each kit includes friction plates, steel plates, clutch springs, and a clutch cover gasket. The friction plates are heat-resistant for fade-free performance, and they weigh more than stock plates, which adds a flywheel effect to aid starting and traction. The plates also have longer life than standard aluminum plates.

Moose Racing's clutch baskets also increase clutch performance. The design creates less heat when the clutch is disengaged, and the machined billet T-6 aluminum basket helps increase heat dissipation. A hard-anodized coating adds durability to extend the life of the clutch performance. ■

» Your Parts Europe rep can tell you more about Moose Racing hard parts, and you can check out [www.mooseracing.com](http://www.mooseracing.com).



## Value-Packed Performance

### Sleek and Stylish Air Cleaner Kits



LA Choppers' new plain cover big air cleaners offer your customers a stylish and affordable upgrade, that also delivers a noticeable performance boost.

**Y**ou know that LA Choppers delivers a big range of high-quality American-made handlebars to the aftermarket, but don't think that's where the company's product offerings stop. In fact, LA Choppers is a powerhouse when it comes to parts and accessories for Harley-Davidson bikes and other V-twin models.

With a lineup that includes everything from mufflers for touring bikes and cost-effective lowering kits to risers and designer air cleaners, it's a brand that works hard to bring helpful and relevant products to your customer base. One great new product is LA Choppers' sleek and understated air cleaner kits.

These are simple and sexy air cleaners that deliver noticeable power and styling in a package that looks as great as it performs. We're talking performance and value.

These air cleaners are extremely well designed and manufactured out of very high-quality materials. Fitments are

available for Sportsters, Twin Cams and the Milwaukee-Eight bikes. There are two simple and very aesthetically pleasing options offered to our customers. One is in a smooth and clean CNC-produced chrome face plate, and the other has a wrinkle black face plate.

Let your DIY customer know that installation is a breeze. The company says that by using the supplied hardware and a few tools, most riders can have one of these installed in about 20 minutes.

LA Choppers pairs that simple and stylish design with a high-performance air filter from K&N. These are the air filters that are designed for maximum airflow, and to provide improved horsepower and torque. You can get that high-performance air filter, paired with a sleek and effective design. Your customers are going to love this one. ■

» *Talk with your Parts Europe sales rep for more details, and get further information at [www.lachoppers.com](http://www.lachoppers.com).*

# RAISING THE BAR



## GRANDE TWIN PEAKS HANDLEBARS

COMFORT      STYLE      SUPPORT

12" GRANDE TWIN PEAKS SHOWN ON A 2019 STREET GLIDE #0601-4621

EXCLUSIVELY  
**PARTS  
EUROPE**  
DISTRIBUTED BY:

**COMPLETE CABLE KITS**  
CLUTCH LINES & CABLES THROTTLE / IDLE  
BRAKE-ABS / NON-ABS ELECTRICAL EXTENSIONS

**HANDLEBARCABLES.COM**  
TO SEARCH CABLE FITMENTS FOR YOUR MODEL





**PARTS PARTS PARTS**  
**UNLIMITED EUROPE CANADA**

PARTSEUROPE.EU | SALES@PARTSEUROPE.EU



---

**WE LIVE  
FOR  
FIRSTS.**

Cooper Webb performed beyond expectations and claimed his first Supercross Championship last season. As Cooper gears up to defend his title, THOR provides the performance and innovation champions rely on to reach the next level. The new Prime Pro gear is purpose built to take you beyond. The First. The Forever...

**THOR**<sup>®</sup>



# Spring 2020 Collection

## New Year, New Look

**W**ith new looks, new colors, new graphics and new styles for those popular Prime Pro, Pulse and Pulse Air racewear kits, THOR is geared-up and ready for Spring 2020 and another season of off-road action.

The excitement doesn't stop there. There's a new lineup of feature-packed Sniper Pro goggles just announced, goggles that come with new performance features and are available in a wide selection of graphics and color combinations. There are also a full selection of lens colors and tear-offs to go in and on them. THOR is also releasing new casual gear like T-shirts, zip-ups, hats and other items celebrating Star Racing Yamaha.

### PRIME PRO RACEWEAR

Thanks to the new Trend graphic styles and the choice of Charcoal/Gray or Black colorways, these popular Prime Pro racewear kits never looked better. Favorites in the THOR lineup, this is the gear pros count on and all those familiar, race-proven Prime Pro features are here.

Built with an athletic fit, the Prime Pro gear is all about unrestricted mobility and minimal weight. THOR calls the Prime Pro its most advanced racewear to date. All the seams are minimized for comfort, and the jerseys have a hybrid-fit with set-in sleeves, taped collars and cuffs, and fully ventilated arm and back panels.

The Prime Pro pant is equally moto-ready. Tough, but ultra-lightweight, there are mesh panels and laser-cut holes for ventilation, the chassis is pre-curved for comfort and there are full-grain leather knee panels. Expansion and stretch panels on the waist add comfort and inside there's a removable Comp Short in place of a liner. More features include inner-knee panels with Aramid fibers, adjustable hip-side cinches, a ratchet-style waist closure and a removable interior hip pocket.

### PULSE AND PULSE AIR

With the Black-to-Red gradient coloring for the new Glow graphics and the Black/Maroon and Midnight/Powder Blue color-combos for the Fire graphic styles, THOR's



Prime Pro

Pulse

Pulse Air



Spring 2020 Pulse racewear has some exciting new looks, too. Just as with the Prime Pro gear, the Pulse racewear is packed with features.

Constructed from moisture wicking materials, the jerseys also feature set-in sleeves, and four-way stretch panels. The pants have pre-curved Rapid-Flex™ knees, side-expansion panels, double- and triple-stitching, and full grain leather knee panels.

And there's a new look available for those fully-ventilated Pulse Air kits. For Spring 2020 this super-cool gear comes with all the performance features of the standard Pulse racewear with the added benefit of fully perforated panels on the jersey and vented mesh panels on the pant for maximum airflow. The Pulse Air kit is available with the new Fire graphic with a Light Gray/Black color combo.

## SNIPER PRO GOGGLES

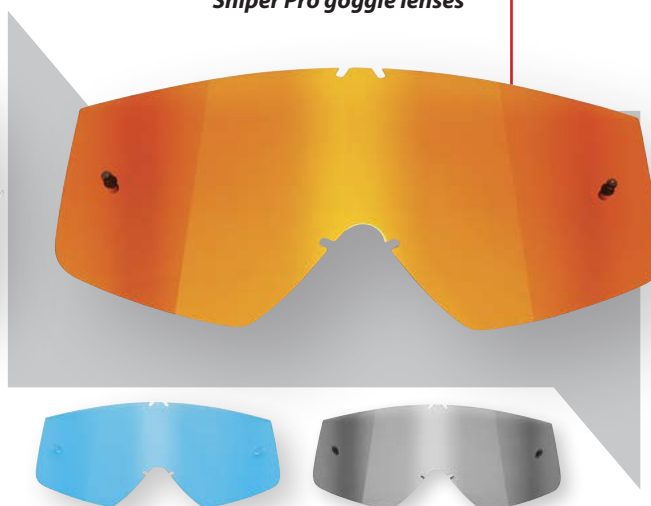
From the Woody style in Brown to the Black, Gold/Black and Flo Acid Solids, to the Flo Pink/Black Splatta, the Red Fader, Lime/Blue Divide and Orange/Black Rampant, for Spring 2020 there's a Sniper Pro goggle with a look and a color for everyone. All those frame styles can be mixed and matched with Iridium, Green, Mirrored, Smoke, Blue, Gold or Clear lenses – all injection molded and optically correct polycarbonate for crystal-clear vision.

The Sniper Pro goggles feature drilled frame ports for increased ventilation and fog resistance, and a removable roost nose guard. There is injection molded outrigger positioning for a perfect fit, as well as dual-layer 14mm face foam with a soft, micro-fleece liner. An adjustable woven 45mm strap makes for a secure silicone grip.

Sniper Pro goggles



Sniper Pro goggle lenses



Zip-up hoodie with the Star Racing Team logo



## SPORTSWEAR RANGE

THOR even makes it easy for your customers to look great off the track. This new range celebrates the victories of the Star Racing Team with a range of casual wear. The lineup includes a zip-up hoodie available in black or navy, T-shirts and a snapback hat. ■

» Talk with your Parts Europe sales rep for details and check out [www.thormx.com](http://www.thormx.com).



# Seven Decades of Success

## Innovation that Wins Championships

Since way back in 1953 when 2-strokes ruled the off-road world, professional motorcycle racers and serious amateurs alike have put Vertex pistons in their engines. While a lot has changed in the world of motorcycling since 1953, one thing has remained a constant – Vertex pistons and the unique levels of power they deliver are still powering champions.

2019 MXGP World Champion Tim Gajser of Honda HRC won with Vertex, as did 2019 Supermoto World Champion Thomas Chareyre with TM Racing, and Beta Motorcycles' 2019 E3 World Champion Steve Holcombe. 2019's E2 World

Whether it's a KTM-Husqvarna SX/EXC, from 50cc all the way up to the 300s, or the SXF/EXC lineup, Vertex has the pistons for all of them. The same is true for all the latest Honda models as well as the new Yamaha range. Vertex also has pistons for the latest from Beta, Gas Gas, Kawasaki and Suzuki. Vertex's choices include Big Bore, Replica, High Compression or GP Racer's Choice pistons.

The latest addition to all this, launched during the recent EICMA show in Milan, are the Vertex Race Evolution pistons. Featuring high-silicon alloy, a reduced top land, a nitride-steel ring and high-tech Moly coating on the skirt,

Vertex Pistons offers a wide range of 2-stroke and 4-stroke pistons for everything from the popular models of years passed, to the newest off-road machines coming from the OEMs.



At the 2019 EICMA show in Milan, the company unveiled its new line of Vertex Sprockets.

Beta Motorcycles' 2019 E3 World Champion Steve Holcombe got to the winner's circle thanks to Vertex Pistons.



Champion Loic Larrieu raced with Vertex, so did EJ World Champion Andrea Verona and EY World Champion Hamish MacDonald. The pistons produced by Vertex, that Italian company founded in 1953, played a starring role in all of this.

Innovators from the start, Vertex is still pursuing the latest technologies, designs, materials and heat treatments to improve the performance and durability of every piston it makes. Today's applications include not only the most popular 2-stroke and 4-stroke engines of years past, but also all the latest design engines and the newest releases by the major off-road motorcycle manufacturers.

the Race Evolution pistons further reduce friction and wear as they improve high-performance durability.

That EICMA show was also the occasion for Vertex Pistons to launch the new line of Vertex Sprockets. This lineup of front and rear sprockets, designed by Vertex engineers and made in Europe, features the latest materials and technologies to ensure the smooth, durable transfer of power riders need. ■

» Talk with your Parts Europe rep for the details, and check out [www.vertexpistons.com](http://www.vertexpistons.com).

**moto3**

**PARTS  
EUROPE**

**MXGP**

# WORLD CHAMPIONS PISTONS

2019 MXGP Champion  
**TIM GAJSER**  
Honda HRC

2019 MXGP Vice Champion  
**JEREMY SEEWER**  
Yamaha Monster Energy

2019 E3 Champion  
**STEVE HOLCOMBE**  
Beta Factory

2019 E2 Champion  
**LOIC LARRIEU**  
TM Racing

2019 EJ Champion  
**ANDREA VERONA**  
TM Racing

2019 EY Champion  
**HAMISH MACDONALD**  
Sherco CH Racing



**ARROWHEAD**  
Performance

**WRENCH  
RABBIT**

**CYLINDER  
WORKS**  
SPECIALIST IN ALL THINGS

**HOT RODS**  
RINGS AND RAYS

**ALL BALLS**  
RACING

**PIVOT  
WORKS**  
RACING

**HOTCAMS**  
DESIGNER THE POWER SOURCE

**FUEL STAR**

info@vertexpistons.com www.vertexpistons.com



**ZIR**  
ZIR.COM

**PARTS  
UNLIMITED**  
**PARTS  
CANADA**  
**PARTS  
EUROPE**  
PARTSEUROPE.EU

# JACKAL

## FULLFACE HELMET

---

- AERODYNAMIC, INJECTION MOLDED POLYCARBONATE SHELL
- SCRATCH RESISTANT, POLYCARBONATE ANTI-FOG SHIELD (SIX COLOR OPTIONS)
- DROP DOWN SUN VISOR (FIVE COLOR OPTIONS)
- INTAKE AND EXHAUST VENTS FOR TEMPERATURE REGULATION
- CHIN VENT PROVIDES INTERIOR AIRFLOW AND REDUCES SHIELD FOGGING
- FULLY REMOVABLE, POLYESTER MOISTURE WICKING LINER AND CHEEK PADS
- DOT AND ECE 22.05 APPROVED W/ DUAL DENSITY EPS FOAM





# Tire Variety

## Options for All Occasions

**S**treet, off-road or a little bit of both? Dunlop has a more versatile portfolio than ever before with the addition of new tires that expand the options for all three of those riding categories.

Riders can really see the variety of tire choices in the popular 120/70 ZR 19 and 170/60 ZR 17 sizes. That size combination fits a huge range of crossover models, like

the Aprilia Caponord 1200 Rally; BMW R1250 GS, R nineT Scrambler and Urban GS; Ducati Multistrada 1200 Enduro; KTM Super Adventure; Triumph Tiger 1200 and others.

The versatile range of Dunlop tires offered in that size combination includes the Trailmax Meridian, the Mutant, the SportSmart TT and the RoadSmart III. Of course, those tires are available in a lot of other sizes, too.



TRAILMAX MERIDIAN IS A NEW ADVENTURE TIRE FOR 2020.



DUNLOP'S NEW MUTANT TIRE IS A CROSS-OVER TIRE THAT PROVIDES ALL-ROAD VERSATILITY ON EVERYTHING FROM ADVENTURE BIKES TO SCRAMBLERS.

### Trailmax Meridian

The Trailmax Meridian is a brand-new Adventure tire for 2020. The 90/10 street to off-road tire is designed to provide extreme performance, outstanding handling in the wet or dry and increased longevity.

To tackle wet conditions, Dunlop uses its MultiTread technology on the Trailmax Meridian. It includes a high-silica compound that provides premium wet grip and makes the tire more flexible at lower temperatures. That compound is combined with a design that efficiently expels water.

The Multi-Tread technology includes a new center compound on the rear tire, which extends under the shoulder compound. That helps increase the overall stiffness of the tire for increased traction under acceleration and improved sporty handling. Both the front and rear tire benefit from Jointless Belt (JLB) construction, which also increases handling capabilities. The claw-like tread pattern ensures that the Trailmax Meridian maintains traction and performance during off-road riding, too.

Dunlop's testing showed an increase in mileage for both the front and rear Trailmax Meridian, even with aggressive riding. Not only does the tire last longer, but it is designed to maintain its performance capabilities throughout the tire's life.

### Mutant

The Mutant is an extremely versatile new tire from Dunlop. This crossover tire can provide all-season, all-roads versatility to over 370 different bike models, whether it is an Adventure bike, sport-touring, naked, retro or a scrambler.

Dunlop calls this fusion of innovations "4 Seasons technology," and it includes a mix of ply material, construction and compounds that have been designed to operate in the toughest of climates, including harsh winter conditions. This has earned the Mutant an official "M+S" rating, meaning it is highly suited for challenging conditions.

In all, the Mutant has the handling and stability of a hypersport tire, the wet capabilities of a rain racing tire and the durability of a touring tire. The distinctive tread pattern combines aggressive-looking blocks with a dynamic directional design. This distinctive look has echoes of Supermoto and dirt track tires, and it is expected to make the Mutant a popular choice for customized bikes, where style is just as important as performance.



SPORTSMART TT



ROADSMART III

### SportSmart TT

The SportSmart TT is right at home on a sporty ride through the country or on the race track. Now available in popular 120/70 ZR 19 and 170/60 ZR 16 sizes, this tire provides that rare balance between reduced steering effort and optimal turn-in grip.

Grip and consistency are achieved with the aid of the Speed Vent Tread (SVT), a tread groove pattern that acts like a vent, opening and closing during turning to help maintain a consistent tire temperature.

On the rear tire, NTEC RT technology allows a rider to fine-tune the inflation pressure to optimize the contact patch, resulting in increased grip.

### RoadSmart III

The RoadSmart III continues to be a popular tire for Dunlop. This high-quality sport-touring tire is the 2018 *Motorrad* magazine touring tire test-winner thanks to attributes like an innovative tread design that enables the tire to maintain performance for a longer time. The tire also has a wear-resistant, high-performance compound designed for high mileage.

Available in a standard version as well as an SP version for sportier riding, the RoadSmart III provides solid grip in the wet and dry with a unique interconnecting groove tread that disperses water quickly. Dunlop's MultiTread technology enhances both wet grip and mileage.

### Geomax Off-Road Tires

In the off-road category, the new Geomax Enduro EN91 joins the Geomax family as a versatile tire that can handle sand, stone and all of the conditions in between. This FIM enduro tire is a significant improvement over its predecessor in dry, wet and mixed conditions. Enhanced feedback and compliance increase bike control, while Hex Shape Blocks and Tilted Crown Blocks increase grip.

The new Geomax MX-53 is designed for medium and hard terrain. An ideal intermediate motocross tire, it offers outstanding predictability and slide control for fast cornering. Higher blocks provide traction on a wide range of terrains, and the design increases lean angle capabilities.

The Geomax MX-12 is designed for sand and mud, and it now comes in additional sizes. It is designed to provide slide control, shock absorption and superior traction when accelerating out of corners. ■

» Talk to your Parts Europe rep about Dunlop's versatile portfolio and find details at [www.dunlop.eu](http://www.dunlop.eu).



THE GEOMAX ENDURO EN91 IS THE LATEST ADDITION TO THE GEOMAX FAMILY OF OFF-ROAD TIRES.



# Race-Inspired Lubricants

## Pushing the Limits of Performance

**M**axima Racing Oils was created with a single goal in mind – to provide world-class racers and high-performance riders everywhere with the high-quality lubrication performance they demand.

Since 1979, this Southern California company has done exactly that. Having worked directly with factory race teams and OEMs, Maxima has been able to develop a product line that includes everything from 2-stroke and 4-stroke engine oils to suspension fluids, specialty lubricants and aerosols.

With the support of Maxima and its wide variety of products, sponsored riders have racked up numerous championship titles in all forms of racing, from motocross to enduro to road racing. Maxima's oils and lubricants

other critical areas, under the harshest racing conditions. Its proprietary, ash-free additive system keeps engines running clean and free of gum, corrosion and deposits.

Maxima's 530RR, a 100 percent synthetic triple-ester 4-stroke oil, also ensures maximum performance and protection under the most severe conditions. Developed in partnership with factory race teams, this high-performance formulation delivers a high level of engine, clutch, and gear protection, while increasing torque and horsepower.

Maxima Racing Fork Fluid, a high-performance fork oil utilizing anti-wear additive technology, was designed to reduce breakaway and running friction. Safe for use in all high-performance cartridge or standard-type forks, it minimizes foaming and air entrainment, conditions seals, and keeps internals clean and free of corrosion.



Maxima's 530RR is a 100 percent synthetic triple-ester 4-stroke oil that was developed in partnership with factory race teams. It provides excellent protection, while increasing torque and horsepower.



First formulated 40 years ago, Maxima's Castor 927 is a championship-winning 2-stroke oil.



Maxima's specialty lubricants and coatings lineup includes the SC1 high-gloss coating and the synthetic Chain Guard.

allow engine builders and racers to push their limits with confidence. These products are now available through Parts Europe.

Castor 927 was the first product developed by Maxima to achieve that singular goal of lubrication performance. Now, 40 years later, it's still the highly regarded, championship winning 2-stroke oil that it was from the start. This unique, castor-based oil provides exceptional protection, while reducing carbonization and vaporization.

The surface-active esters, combined with a highly refined castor oil, provide excellent film thickness and surface tenacity to protect cylinder walls, bearing journals and

The company's specialty lubricants and coatings are just as hard-working as their quality engine oils. Dubbed, "the new bike in a can," Maxima's SC1 is safe for use on gloss or matte finishes, and protects and beautifies multiple surfaces including plastic, vinyl, rubber and carbon fiber. It repels mud, dirt and debris leaving a clean, long-lasting luster. And Maxima's spray-on chain lubricants feature unique, ester-fortified formulas that penetrate deeply and tenaciously cling to applied surfaces, minimizing fling-off, corrosion, noise, chain stretch, and wear. ■

» Talk with your Parts Europe rep for details, and check out [www.maximausa.com](http://www.maximausa.com).



# #1 BRAND IN THE USA

## NOW AVAILABLE THROUGHOUT EUROPE



**MONSTER ENERGY KAWASAKI**

**ELI TOMAC** 2019, 2018 & 2017 AMA 450 MOTOCROSS CHAMPION  
2018 MONSTER ENERGY CUP CHAMPION

**ADAM CIANCARULO** 2019 MONSTER ENERGY CUP CHAMPION  
2019 AMA 250 MOTOCROSS CHAMPION



### CRUSHING IT IN PORTUGAL!

**RYAN SIPES** "THE GENERAL" 2019 ISDE CHAMPION / RED BULL KTM

**MAXIMA FORMULA K2 INJECTOR** is a full synthetic, triple ester 2-stroke engine oil designed to ensure optimum protection and performance under extreme race conditions. Advanced, low-ash additive system minimizes carbon build up while preventing rust, corrosion and wear. Designed for direct-injected systems, but robust enough to be used as a premix at any OEM-recommended fuel: oil ratio.



### BEACH ATTACKS

**JD BEACH** ATTACK RACING / YAMAHA

**MAXIMA EXTRA SYNTHETIC ENGINE OIL** is a full synthetic, triple ester 4-stroke engine oil designed to ensure maximum performance while providing maximum protection under the most severe conditions. For use in all motorcycle brands: Kawasaki, Yamaha, Honda, Suzuki, KTM, Husqvarna and more.

Exceeds the requirements of API SN PLUS / JASO MA2.



### THE SANDS OF THE DAKAR

**PATRICIO CABRERA** 6X DAKAR COMPETITOR

**MAXIMA PRO PLUS+ SYNTHETIC ENGINE OIL** is a full synthetic, ester-fortified 4-stroke engine oil designed to ensure optimum protection, peak performance and positive clutch feel. For use in all motorcycle brands: Kawasaki, Yamaha, Honda, Suzuki, KTM, Husqvarna and more.

Exceeds the requirements of API SN PLUS / JASO MA2.



AVAILABLE THROUGH PARTS EUROPE / MADE IN THE USA / [MaximaUSA.com](http://MaximaUSA.com)





# See, And Be Seen

## LED Lighting and Adaptive Tech



J.W. Speaker has created an LED lineup that provides superior visibility for your customers and those on the road around them. The Adaptive 2 LED Headlight Series eliminates dark corners and provides a punch of light more than 450 meters down the road.

One of the critical benefits of LED lighting products is superior visibility, both for your customers while out riding and for those out sharing the road with your customers. Fortunately for all riders, J.W. Speaker has created an LED lineup addressing poor visibility with a portfolio of lighting options for riders on a wide selection of makes and models.

J.W. Speaker's innovative approach to exceptional visibility, especially when taking corners, was introduced in the Adaptive 2 LED Headlight Series, eliminating dark corners and dynamically putting light where it was needed. While originally designed for Harley-Davidson models, the company expanded its portfolio to include fitments for BMW, Ducati, Kawasaki, Triumph, and Yamaha, thanks to the company's extensive range of adaptor kits for 18cm (PAR56) round lights. The fitment kits include all the necessary parts for a quick-and-easy installation. Once installed, your customers can enjoy the advanced capabilities of the Adaptive 2 Series headlights.

These innovative headlights dynamically provide ditch-to-ditch lighting to eliminate dark corners and provide a punch of light more than 450 meters down the road, giving your customers a more confident ride. J.W. Speaker's signature plug-and-play Adaptive technology allows the light to sense when the bike is leaning so it can redirect the beam to illuminate dark corners. The headlight calculates bank angles on a real-time basis using proprietary

technology and on-board sensors, automatically directing the light array up or down as the motorcycle leans.

J.W. Speaker also has two different models of reflector-based LED headlights for those customers who want the benefits of LED lighting, but prefer the classic reflector styling. The Model 8720 Reflector LED replaces 18cm round headlights, while the Model 8620 light is an upgrade for 14.5cm round headlights.

Both are offered in a two-tone die-cast aluminum housing that provides rugged durability and a classic look. The state-of-the-art LEDs make sure your customers can definitely see and be seen. They are available with either a chrome or a dark chrome retro-styled face.

Additionally, superior visibility doesn't just stop at the headlight. Your customers on select Harley-Davidson models can upgrade their fog lights to J.W. Speaker's Model 6045 and Model 6025 LED fog lights. Both offer superior visibility, extreme durability and long life. The Model 6045 is an upgrade for bulb-based 11.4cm (PAR36) fog lights and is designed to be compatible with most fog light housings. The Model 6025 is a 10cm round reflector-based LED fog light designed for motorcycle riders who prefer the classic styling. ■

» *Talk with your Parts Europe rep about J.W. Speaker's complete portfolio of LED lighting and get further information [www.jwspeaker.com](http://www.jwspeaker.com).*



## ADAPTED FOR YOUR RIDE



**8690**  
ADAPTIVE 2



**8790**  
ADAPTIVE 2



**8700**  
EVO 2 DUAL BURN

Fitment for Ducati, BMW, Triumph, Yamaha, and Kawasaki bikes.  
 J.W. Speaker's model 8700 EVO 2 Dual Burn, 8690 Adaptive 2, and 8790 Adaptive 2 headlights can now be mounted to most models with 14.5cm (PAR46) or 18cm (PAR56) round headlights.



# Ready for Riding

## TÜV-Approved and ABE-Approved Parts

**T**hree letters can make a very big difference to customers. In this case, the letters stand for an extra stamp of approval from TÜV and ABE. Drag Specialties offers Harley-Davidson riders a wide variety of TÜV-approved handlebars as well as ABE-approved brake discs.

Parts Europe carries an extensive range of Drag Specialties handlebars for Harley-Davidsons, with styles from mild to wild. The bars are produced by Tolemar Manufacturing to high standards for quality, style and durability. Of the Drag Specialties handlebars available through Parts Europe, 54 of them are TÜV approved.

accept OEM Harley-Davidson heated grips, so riders can stay warm without sacrificing style.

TÜV-approved Buffalo bars range from 25.5cm of end rise all the way up to 40.5cm. Another option are the Beach handlebars, which have very little rise but a dramatic 38cm of pullback for a classic look. T-bars, ape hangers and more traditional styles are also on the approved list.

Drag Specialties 25.4mm handlebars and 25.4mm touring handlebars also feature several TÜV-approved applications in a variety of bends, including ape hangers. The 25.4mm bars are made from seamless steel tubing for a clean look, and they come slotted and notched for throttle-by-wire models.

Drag Specialties also has stainless steel front and rear brake rotors that are manufactured in Europe to ISO/TS 16949 certified standards and have ABE approval. The machined surfaces on these rotors are machined with a bi-lateral cross-textured grinding process that keeps rotor runout at no more than 0.01mm.

The Type F solid disc has a proprietary heat treatment to ensure homogeneity and consistency in the design. Non-machined surfaces are finished with an anti-corrosive paint for added durability. The Type F is available in both classic and T-Bone designs.

The Type FT and Type FTK brake rotors are both fully-floating discs whose design provides increased braking performance and eliminates rotor fade/warp.

The Type FT disc features machined, anodized aluminum carriers and rings. Non-machined surfaces are all finished with an anti-corrosive paint for durability and protection from the elements.

The Type FTK rotor has an innovative design that improves braking performance and consistency by helping the rotor cool faster during extreme use. The style is also innovative, making the Type FTK a great way to instantly update the look of an older bike. The distinctive outer brake ring features machined and painted rotor slots. ■

» *Talk to your Parts Europe rep about the importance of TÜV and ABE approval, and find out which Drag Specialties parts are available in those categories.*



Parts Europe carries a wide range of TÜV-approved handlebars from Drag Specialties. The lineup includes Buffalo bars, Beach handlebars, and T-bars.

Drag Specialties also has stainless steel front and rear brake rotors that are manufactured in Europe to ISO/TS 16949 certified standards and have ABE approval.

Drag Specialties 32mm Buffalo handlebars are available in a lot of different TÜV-approved styles. With a diameter of 32mm, Buffalo handlebars accept stock controls and handlebar clamps to make it easy to change from stock bars to Buffalo bars. The handlebars are diamond-knurled and slotted for internal wiring. They also



# PREDATOR III SEAT

FOR 18-20 SOFTAIL®



**PN 0802-1073**

The Predator III seat features a 6" tall driver support with unique styling covered in automotive-grade vinyl. The molded polyurethane foam provides maximum comfort and has a narrow driver's cut for better leg clearance.

Available in Smooth or Double Diamond Stitch with black, red or silver thread. See your Parts Europe Sales Representative for more information on the complete line of Drag Specialties Seats.



Manufactured by  
Drag Specialties in the U.S.A.

**PARTS  
EUROPE**

[partseurope.eu](http://partseurope.eu)

**DRAG**  
Specialties  
seats

[seats.dragspecialties.com](http://seats.dragspecialties.com)



# Upgrades for the Dirt

## Strong Clutches for Bikes, ATVs and UTVs



Barnett's Dirt Digger Clutch Kit is an upgrade over the OE setup, and provides increased, long-lasting performance.

Billet Clutch Basket

Barnett's billet pressure plates are designed for long use, and help dissipate heat better than stock units, thus lowering clutch operating temperatures.

**A**nyone seriously off-roading with a motorcycle, ATV or UTV knows the importance of having a strong, long-lasting clutch. Racers can wear out an OE clutch pack in no time, but so can weekend warriors and recreational riders. On two wheels or four, off-roading demands a lot from a clutch and at replacement time your customers will likewise demand a lot from the new clutch they're installing.

Clutch specialists for more than 70 year, Barnett has what these customers are looking for. More than just OE replacements, Barnett's Dirt Digger Clutch Kits, steel-faced Billet Aluminum Pressure Plates, and super-duty Billet Clutch Baskets are serious upgrades. Designed for performance, they'll reliably transfer that off-road power and do it with easily modulated control and for a good, long while. There are direct-fit applications for all the popular off-road makes and models, motorcycles, ATVs and UTVs right up to current-year machines.

The Dirt Digger Clutch Kits, featuring Barnett's Carbon Fiber and Kevlar friction materials, are a big step up from OE. Precision-ground, tempered-steel drive plates and new, heavy-duty, shot-peened and heat-treated springs that are 10 percent to 15 percent stiffer than OEM, are included.

A Dirt Digger upgrade with its increased performance offers a stronger, longer lasting clutch with positive engagement. Every kit is checked for an exact stack height so there's always an easy fit.

Matching that Dirt Digger Kit with a Billet Pressure Plate and Clutch Basket assures total clutch performance. Barnett's pressure plates are machined from top-quality billet aluminum and, featuring a tempered-steel friction surface guaranteed for long use, they dissipate heat better than OE units, thus lowering clutch temperatures to further extend clutch life.

A precision-machined Barnett Billet Clutch Basket featuring replaceable stainless steel inserts ensures super-smooth clutch operation. The baskets also have custom-machined oil-passage windows for increased oil flow. In conjunction with the segmented Dirt Digger friction plates they'll further lower operating temperatures to extend clutch life even longer. ■

» *Talk with your Parts Europe sales rep for more details on Barnett's clutch products, and get more information at [www.barnettclutches.com](http://www.barnettclutches.com).*

[Go] Anywhere

with **Barnett**

Performance for the way you ride.

**Barnett**<sup>TM</sup>  
Clutches  
& Cables

[www.BarnettClutches.com](http://www.BarnettClutches.com)



### 01 BILLET CLUTCH BASKETS

- CNC precision machined billet aluminum
- Replaceable stainless steel inserts virtually eliminate grooving
- Increases oil flow for longer clutch life

### 02 DIRT DIGGER CLUTCH KITS

- Designed to run cooler, last longer
- Stronger, smoother engagement
- Includes frictions, steels, and heavy duty springs
- Exclusive proprietary Kevlar and Carbon Fiber friction materials

### 03 OFF-ROAD PRESSURE PLATES

- CNC precision machined from billet aluminum
- Attached steel surface is guaranteed to never wear out
- Steel surface helps dissipate heat



Maverick Viñales won twice in 2019 (Assen and Malaysia) and ended up 3rd in the MotoGP points. He also had four races that he did not score any points, however, a problem he will need to resolve to be champion in 2020.



Lack of consistency was the downfall of Fabio Quartararo in 2019, his rookie year in MotoGP. He won the pole position six times, but never won a race and managed a podium finish in only 7 of the 19 races. 2020 could be his breakthrough season.







# CHASING MARQUEZ

By Don Emde | Photos by Michelin Motorsports



Following runner-up finishes in two of the first three races of 2019, Valentino Rossi (middle) never had a podium finish since. 2020 should be a tell-tale test to determine how many more seasons he will compete.



Andrea Dovizioso (04) won twice in 2019 and ended the season ranked 2nd in points behind Marc Marquez. He and his Ducati team hope to be a stronger contender for the championship in 2020.

Alex Rins scored two wins for Suzuki in 2019, but he did not run near the front often enough to be a title chase contender. This year he and his team hope to improve on his 4th place ranking in the world points.



**T**he 2020 MotoGP racing season begins on the 8th of March in Qatar under the lights of the Losail International Circuit. When the final checkered flag falls eight months later in Valencia, Spain, roughly 3 million racing fans will have attended one of the 20 races in the 2020 series and as many as 400 million will have watched on television.

Unlike previous years where the championship came down to the final race, Repsol Honda rider Marc Marquez turned the 2019 title chase into a romp. En route to his 8th career world championship, Marquez delivered one of the most dominating seasons in the history of motorcycle Grand Prix racing, winning or finishing 2nd in every one of the 19 races except one (he fell at the Circuit of the Americas in the United States).

We will of course have to wait and see whether Marquez continues his domination of the sport, or if it returns to its previous offering of consistently tight racing and multiple title contenders. Key questions to be answered this year include:

- » 1 How will Marc Marquez hold up physically? Following surgeries now on both shoulders, he is more prone to a dislocation than any rider in the series. Is his own body his biggest challenger?
- » 2 Can Yamaha win it all? Is this the year the young lions of the Monster Energy Yamaha team, Viñales and Quartararo, step up for a season-long campaign to unseat Marquez? And will the aging Doctor regain his winning form?
- » 3 Can Ducati and Suzuki turn a few race wins in 2019 into a championship run in 2020?

Info: [MotoGP.com](http://MotoGP.com)



## 2020 MOTOGP SCHEDULE

08 March	Grand Prix of Qatar	Losail International Circuit, Qatar
22 March	OR Thailand Grand Prix	Chang International Circuit, Thailand
05 April	Red Bull Grand Prix of The Americas	Circuit of the Americas, United States
19 April	Gran Premio Motul de la Republica Argentina	Termas de Rio Hondo, Argentina
03 May	Gran Premio Red Bull de Espana	Circuito de Jerez – Angel Nieto, Spain
17 May	SHARK Helmets Grand Prix de France	LeMans, France
31 May	Gran Premio d'Italia Oakley	Autodromo Internazionale del Mugello, Italy
07 June	Gran Premi Monster Energy de Catalunya	Circuit de Barcelona-Catalunya, Spain
21 June	HJC Helmets Motorrad Grand Prix Deutschland	Sachsenring, Germany
28 June	Motul TT Assen	TT Circuit Assen, Netherlands
12 July	Finland Grand Prix	KymiRing, Finland
09 August	Monster Energy Grand Prix Ceske republiky	Automotodrom Brno, Czech Republic
16 August	myWorld Motorrad Grand Prix von Osterreich	Red Bull Ring – Spielberg, Austria
30 August	British Grand Prix	Silverstone Circuit, Great Britain
13 September	Gran Premio Octo di San Marino e della Riviera di Rimini	Misano World Circuit Marco Simoncelli, Italy
04 October	Gran Premio de Aragon	MotorLand Aragon, Spain
18 October	Motul Grand Prix of Japan	Twin Ring Motegi, Japan
25 October	Australian Motorcycle Grand Prix	Phillip Island, Australia
01 November	Shell Malaysia Motorcycle Grand Prix	Sepang International Circuit, Malaysia
15 November	Gran Premio Motul de la Comunitat Valenciana	Circuit Ricardo Tormo, Spain

# MICHELIN COMMANDER III

**NEW 2020**



**MICHELIN**  
COMMANDER III  
CRUISER

**MICHELIN**  
COMMANDER III  
TOURING



Exceptional wet grip for  
Cruiser and Touring bikes





## 2020 MOTOGP RIDERS

#	RIDER	AGE	COUNTRY	BRAND	TEAM
4	Andrea Dovizioso	34	Italy	Ducati	Ducati Team
5	Johann Zarco	30	France	Ducati	Reale Avintia Racing
9	Danilo Petrucci	30	Italy	Ducati	Ducati Team
12	Maverick Vinales	25	Spain	Yamaha	Monster Energy Yamaha MotoGP
20	Fabio Quartararo	21	France	Yamaha	Petronas Yamaha SRT
21	Franco Morbidelli	26	Italy	Yamaha	Petronas Yamaha SRT
27	Iker Lecuona	20	Spain	KTM	Red Bull KTM Tech 3
29	Andrea Iannone	31	Italy	Aprilia	Aprilia Racing Team Gresini
30	Takaaki Nakagami	28	Japan	Honda	LCR Honda IDEMITSU
33	Brad Binder	25	South Africa	KTM	Red Bull KTM Factory Racing
35	Cal Crutchlow	35	England	Honda	LCR Honda Castrol
36	Joan Mir	23	Spain	Suzuki	Team SUZUKI ECSTAR
41	Aleix Espargaro	31	Spain	Aprilia	Aprilia Racing Team Gresini
42	Alex Rins	25	Spain	Suzuki	Team SUZUKI ECSTAR
43	Jack Miller	25	Australia	Ducati	Pramac Racing
44	Pol Espargaro	29	Spain	KTM	Red Bull KTM Factory Racing
46	Valentino Rossi	41	Italy	Yamaha	Monster Energy Yamaha MotoGP
53	Tito Rabat	31	Spain	Ducati	Reale Avintia Racing
63	Francesco Bagnaia	23	Italy	Ducati	Pramac Racing
73	Alex Marquez	24	Spain	Honda	Repsol Honda Team
82	Mike Kallio	38	Finland	KTM	Red Bull KTM Factory Racing
88	Miguel Oliveira	25	Portugal	KTM	Red Bull KTM Tech 3
93	Marc Marquez	27	Spain	Honda	Repsol Honda Team

**NEW 2020**

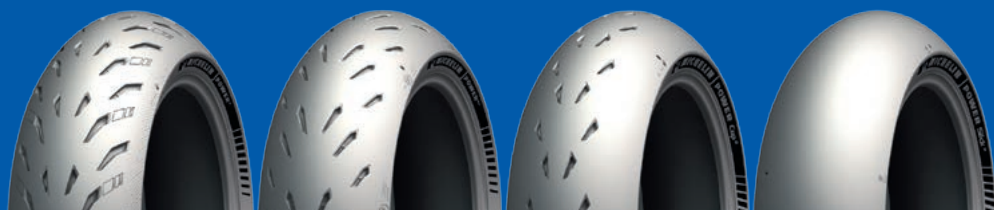
**MICHELIN  
POWER  
EXPERIENCE**

**MICHELIN  
POWER<sup>5</sup>**

**MICHELIN  
POWER<sup>GP</sup>**

**MICHELIN  
POWER<sup>Cup</sup> 2**

**MICHELIN  
POWER<sup>Slick</sup> 2**



**MICHELIN**



# Road Range

## New Premium On-Road Tires

**M**ichelin is launching its most extensive model lineup of motorcycle tires ever, with a focus on providing top performance for each segment of powersports. In the on-road categories, Michelin has new premium tires for sport, V-twin and scooter models.

Sportbike riders will enjoy the performance capabilities of the new Michelin Power 5 tire, which joins the Power Series line. Until now, the Power RS has been the top sportbike tire available from Michelin, but the Power 5 will be the preeminent product for sportbikes on the road. Designed to deliver proven performance plus the ability to handle turns with ease, the Michelin Power 5 offers exceptional wet grip to give sportbike riders even more confidence in the rain. The Power 5 will be available in one front size and five rear sizes.

The Power Series is growing even bigger with the addition of the Michelin Power GP tire. This 50/50 track day tire superbly balances both wet and dry grip through the compound and tread design. Michelin 2CT and 2CT+ Technologies optimize the placement of carbon black and silica compounds to ensure enhanced grip, and the maximum slick zones boost dry grip on the track. Michelin also took aesthetics into consideration when designing the Power GP, including the Premium Touch sidewall.

V-twin riders, especially those who want a custom look for their motorcycles, will find a blend of looks and performance in the Michelin Commander III. Instead of just one Commander tire, this new version includes two styles – the Commander III Cruiser and Commander III Touring. Available in 27 sizes with specific fitments for both Cruiser and Touring platforms, the Commander III gives customers more focused performance for their style of riding.

The Commander III Cruiser and Touring versions feature improved wet grip without sacrificing mileage compared to the durable Commander II. Distinctive tread patterns for both versions of the tire plus patented velvet sidewall styling give the Commander III a unique but timeless look that is designed to enhance a V-Twin motorcycle.

Although the Commander III line is replacing the Michelin Commander II tire as the premium offer for V-twin motorcycles, Michelin will continue to offer the popular Commander II in 17 sizes.

In the scooter segment, the Michelin City Grip 2 tire will be the new premium product from Michelin. This next-generation scooter tire combines the all-season traction of the Michelin City Grip Winter tires with the longevity of the Michelin City Grip tires. Silica-based compounds and newly-developed shark-tooth sipes provide excellent grip on wet or slippery surfaces, including painted lines. As an added bonus, the City Grip 2 tires are designed to deliver more mileage than their predecessors. ■

» *Speak with your Parts Europe rep for more details about Michelin's new tires, and visit <https://moto.Michelin.co.uk/motorbike>.*



Power 5 tires



Power GP tires



Commander III Cruiser tires



City Grip 2 tires



# Street Selection

## A Helmet for Every Kind of Riding

**Z**1R has street riders covered when it comes to helmets. The company's range of ECE-certified helmets includes everything from sportbike styling to scooter inspired, accommodating different riding styles and personal tastes with full-face, dual sport, modular and three-quarter helmet options.

The Jackal full-face helmet is designed for maximum airflow, both inside and out. The helmet starts with a shell that is aerodynamically shaped for a quiet and stable ride. Chin and top vents enable air to flow through channels in the multi-density EPS liner. Up front, a scratch-resistant, anti-fog face shield and interchangeable drop-down sun visor ensure a clear view in everything from rain to bright sun.

Z1R's Range dual-sport helmet is designed to go anywhere a dual-sport motorcycle can go. Riders who would rather be off the road than on it can remove the shield and install the included pivot cover plates, which allows the Range helmet to be paired with motocross goggles for true off-road style.

The Range has an injection-molded ABS shell, a dual-density EPS liner, a scratch-resistant shield and a drop-down sun visor. The riding season goes year-round for some, and the Range is prepared to take on the cold weather, too. The helmet is available in a snow-ready dual pane or electric shield version. The snow helmets also include a street shield in the box.

Z1R has a modular helmet that can take on all kinds of riding scenarios, from day to night and from sun to snow. The comfortable Solaris SV helmet features a drop-down sun visor underneath the traditional scratch-resistant shield, ample ventilation through multiple channels and a fully removable, washable moisture-wicking liner.

The Solaris SV is compatible with many Bluetooth and other communication devices, making it a great choice for touring and group rides. Like the Range, the Solaris SV is able to provide a clear view on snowy days. It is available in a dual shield or electric shield version, which both come with a breath box and chin curtain.

The Road Maxx helmet is Z1R's three-quarter helmet. Derived from scooter helmet styling, the Road Maxx has an ABS molded shell and a fully removable moisture-wicking liner that makes cleaning effortless. A scratch-resistant drop-down sun visor makes riding from day into night a quick and easy transition. The Road Maxx is available in a variety of different colors. ■

» Learn more about Z1R's range of street helmets and the unique features of each one from your Parts Europe rep. You can also get more details and check out the color options at [www.z1r.com](http://www.z1r.com).



The Road Maxx helmet is Z1R's three-quarter helmet.



The Jackal full-face helmet is designed for maximum airflow, both inside and out, and features a drop-down sun visor.



The Range dual-sport helmet can be worn with or without the shield, and is available in a snow-ready dual pane or electric shield version.



# New Year, New Vendors

## Three Iconic Brands Join Parts Europe

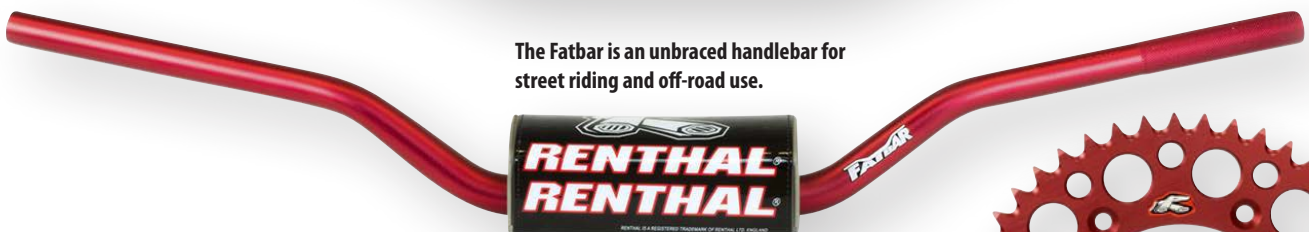
**P**arts Europe is welcoming the New Year by celebrating new partnerships with three iconic brands. Now dealers can order Renthal, LeoVince and WARN products from Parts Europe, ensuring ready stock and quick shipping for the wide range of premium parts and accessories available from each one.

crossbar. The tapered wall profile means the control area retains a standard size.

Renthal's front and rear sprocket options include the Ultralight design for street, off-road and racing. The Ultralight sprockets are CNC machined from 7075 T651 alloy, which offers a good combination of strength and light weight.

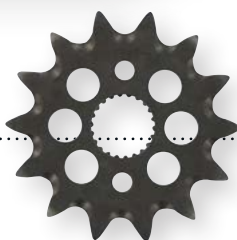


Renthal's Twinwall style handlebars



The Fatbar is an unbraced handlebar for street riding and off-road use.

Renthal's front and rear sprockets provide lightweight, tough performance for street riding, off-road use and racing.



### Renthal

By partnering with Parts Europe, Renthal now has distribution across the entire Parts family. Renthal manufactures premium components for the motocross/off-road, sportbike and ATV segments, with handlebars and sprockets leading the way.

Founded by two friends and motorcycle enthusiasts in 1969, Renthal initially made handlebars for trials bikes. That competitive angle is still a priority – Renthal's racing support has amassed 435 racing titles worldwide. The company has been based in Manchester, England, since its inception, and its selection of parts has grown to include items such as chains, grips and brake pads.

Renthal's flagship off-road handlebar is the Twinwall style, an extremely strong design that is the choice of many top racers. The strength comes from a second aluminum alloy tube nested inside the handlebar.

The Renthal 22.2mm (7/8-inch) handlebar with a cross-brace provides riders with the ideal amount of flex, while maintaining the strength required for aggressive off-road racing as well as street riding.

The 28.6mm (1 1/8-inches) Fatbar is an unbraced handlebar for street and off-road. Its robust size makes it extremely strong, and the Fatbar saves weight by eliminating the

For sportbikes, a 520 conversion is available for most current models.

» Learn more about Renthal and all of the available products at [www.renthal.com](http://www.renthal.com).

### LeoVince

The popular Italian exhaust manufacturer LeoVince joins the Parts Europe family with its portfolio of sleek, racing-derived complete exhausts and slip-on systems. LeoVince has been producing motorcycle exhausts since 1954, and the company has maintained an active role in the racing world.

Today, LeoVince's production facility is located in a 22,000sqm factory equipped with state-of-the-art technology. That enables the company to do everything in house, even welding the titanium parts in a controlled atmosphere chamber and creating its own carbon fiber components.

The LV-10 slip-on really showcases LeoVince's dedication to road racing. It was developed in collaboration with top Moto2 and Moto3 teams and has features derived from



LeoVince's GP Duals



The LV-10 slip-on was developed with top Moto2 and Moto3 teams, and has features derived from the company's experience in MotoGP and SBK racing.

the company's experience in MotoGP and SBK racing. The LV-10 has a compact size that provides maximum weight savings without sacrificing performance or the unmistakable LeoVince sound. It's available in AISI 304 stainless steel with a matte finish, in black with a ceramic matte paint or in titanium.

The LV One Evo is a blend of traditional and modern. The stainless-steel sleeve is paired with a distinct angular carbon-fiber end cap. The finishes for the aluminum LV One Evo include a sandblasted Titanium Look stainless steel or a black matte finish. The exhaust is also available in full carbon fiber.

Riders who want a true GP look will appreciate LeoVince's GP Duals. The dual-canister exhaust has a metallic ceramic-based black paint applied over the stainless-steel construction, giving any bike a big style update. The laser-cut connections on the mufflers mean that the GP Duals are easy to install.

» Learn more about LeoVince at [www.leovince.com](http://www.leovince.com).

## WARN

For more than 70 years, WARN has been bailing riders out of tricky situations with its winches. The new AXON and VRX winches represent the newest generation of WARN powersports winches, joining the market after being completely re-engineered from the ground up. These high-performance winches are now available to dealers through Parts Europe.

The AXON winches are ideal for large ATVs and two-person or four-person UTVs. The smaller VRX winches are best suited to ATVs and two-person UTVs.

The AXON family of winches are as smart as they are sturdy. Advanced technology and controls monitor temperature and provide user feedback, which adds up to previously unachievable levels of reliability. The powerful motor is combined with a digital contactor to create a unit called a Motactor. The Motactor reduces installation time by up to 50 percent, increases performance and provides precise

monitoring of speed, load and motor temperature.

AXON winches include versions with pulling capacities of 3500, 4500 and 5500 pounds. All three of the winches feature all-metal construction with waterproof sealing to completely protect critical components from water and mud. The winches are available with either a steel or Spydura synthetic rope.

WARN's VRX winches are a fusion of performance and value. Like the AXON, the VRX winches also feature a metal housing plus an all-metal drivetrain and waterproof sealing. The robust new clutch design draws from WARN's 70+ years of experience with 4WD hub locks.



WARN's VRX line of winches is designed with a fusion of performance and value.

With WARN now part of Parts Europe's portfolio of brands, your customers should check out the AXON family of winches. They feature advanced technology and tough pulling power.



VRX winches are available in pulling capacities of 1134kg (2500 pounds), 1587kg (3500 pounds) and 2041kg (4500 pounds). Customers can choose from either synthetic or steel rope, both of which have an increased diameter and are rated to exceed the stated load limit. ■

» Learn more about WARN winches and all of the premium features on the new models by visiting <https://international.warn.com>.



# Forged for Performance

## Race-Quality Pistons and Connecting Rods



Wössner has 2-stroke pistons and connecting rods for a big range of applications.

**M**any of the top racers in Supercross, motocross and MXGP that emerge each weekend at the top of the podium get there with help from the Wössner pistons and connecting rods in their engines. It's been that way for more than a quarter of a century.

Those parts, the very same design forged pistons and connecting rod sets racers choose, are available at Parts Europe. There are 2-stroke and 4-stroke applications that cover just about any off-road, motocross or ATV machine imaginable with standard sizes, oversizes and the choice of OE or high-compression options all available. Wössner also has the pistons and connecting rods for street and road-race bikes, from Aprilia to Yamaha. The company also covers a range of hard-to-find applications.

For all those applications, bore sizes and compression ratios, Wössner uses high-quality 4032 and 2618 aluminum alloys for the forged pistons, with forged 4340 steel alloy chosen for the connecting rods. With quality at the forefront for all of this, everything is designed, proto-

typed, forged and machined in-house at Wössner's World Headquarters and production facility in Weil am Rhein, Germany.

Everything designed and produced is tested with Finite Element Analysis (FEA) computer simulation, crafted using the most up-to-date CNC manufacturing centers and held to the closest tolerances for fit, finish and attention to detail.

Significantly, all the Wössner 4-stroke pistons are lightweight, feature a strong, double-bridged forging design and are designed to run with extremely tight wall-clearances for reduced noise and increased performance.

Winning racers and performance-engine builders have relied on Wössner's lineup of products for years, ever since company founder Eckart Wössner – himself a motorcycle racer in the 1970s – began producing his own high-performance pistons in-house. ■

» *Talk with your Parts Europe rep for details and get more information at [www.woessner-kolben.de](http://www.woessner-kolben.de).*



Wössner's 4-stroke pistons and connecting rods are lightweight and strong, and are designed to provide increased performance.





# Introducing Mitas Tires

## High Quality and a Range of Applications

**M**itas Tires, part of the Trelleborg Group and a big brand in Europe, are now available at Parts Europe. The selection includes tires for a wide range of applications. For example there are the Sport Force+ performance tires and the Touring Force tires, as well as the Custom Force lineup and the Terra Force trail and enduro tires. There are even tires for motocross and rally racing in addition to tires for scooters and mopeds.

There's a lot to see and your rep can tell you about all the features, benefits and specialized applications that Mitas Tires has brought to Parts Europe. Right now, though, have a look at some of what Mitas Tires has available, because there's plenty of it.

And that's just one example of the Mitas Tires off-road lineup. Just as big and just as diverse as that on-road lineup for the off-road applications, Mitas has carcass designs, compounds, tread patterns and styles available for every type of off-road riding and racing.

Those Custom Force tires come fully equipped with the features your cruiser customers want out of a tire – durability, stability, comfort and an attractive design. The range has been extensively tested under the most strenuous conditions possible in the U.S. as well as in different countries across Europe, to ensure high levels of performance.

Mitas has tires for the trails and tires for the motocross tracks, there are tires for hard terrains and soft terrains, tires for the mud, rocks and sand of enduro. All this is



Mitas Tires' big range of tires is now available through Parts Europe. The selection includes options for every form of riding, from sport-touring and scooter commuting, to motocross and sportbikes.

For on-road use alone, for sport and sport touring, for classic bikes, customs, scooters and mopeds, Mitas Tires has 50 different tire styles available. There are radial and bias-ply tires as well as tires with soft and sticky compounds. Mitas also has tires designed for high-mileage and great performance in all weather conditions.

All this has been developed, engineered, tested and produced in-house at the Mitas Tires' European facilities. Quality throughout, Mitas has even become a partner with the OEM market, the latest example being the Mitas E-07 tires supplied as OE on KTM's 690 Enduro R model for 2019.

available now, too, along with all the Mitas heavy-duty tubes and mousse inserts for its off-road racing tires as an alternative to inner tubes.

Those mousse inserts were developed in conjunction with the company's sponsored and test off-road riders. Numerous versions of the product were tested in combination with Mitas tires on different terrains and in a variety of weather conditions. The results are a range of mousse versions and sizes that meet all the requirements of off-road racers. ■

» *Talk with your Parts Europe sales rep for more information and get further details at [www.mitas-moto.com](http://www.mitas-moto.com).*



# Ready for Adventure

## Parts Made for Exploration

**T**here is a new brand name in the Parts Europe catalogs this year, but it is already widely-recognized throughout the world. SW-MOTECH's extensive list of aftermarket parts and accessories are known for their quality and ingenuity, and now dealers can order them through Parts Europe.

Dealers can take advantage of SW-MOTECH's permanent stock at Parts Europe facilities, ensuring both constant availability and fast delivery. Throughout Europe, dealers who order by 17:00h will receive their order the next day.

SW-MOTECH is perhaps best known for its innovative luggage and luggage systems, such as tank bags that mount with proprietary tank rings or the Blaze saddle bag system. The ION and EVO tank rings make it quick and easy to mount and lock a tank bag into place, giving a rider assurance that their luggage is secure no matter how rough the terrain gets.

Among the newer luggage options from SW-MOTECH is the aerodynamic Urban ABS top case. The case mounts to a SW-MOTECH Street-Rack or Adventure-Rack via the DHV system, a newly-developed quick-release fastener. With the DHV system, the top case slides onto the rack and locks in place with a single hand movement. Integrated anti-theft protection is part of the system, too.

The Urban ABS top case is made from a lightweight, durable ABS material. When the case is expanded, the padded interior has enough room for a helmet. The case also includes a carrying handle, reflective details, an inner pocket and a waterproof inner bag.

It is that sort of attention to detail and an awareness of what riders really need that has helped propel SW-MOTECH from a three-man company to a team of more than 300 people. The company is headquartered in Rauschenberg, Germany, and there is a second plant in the Czech Republic. From those two locations, SW-MOTECH produces both OEM and aftermarket parts that are then exported to over 65 countries.

In the early 1990s, Jürgen Swora and Jörg Diehl needed a way to transport extra gas for a ride across Libya. Since they couldn't find something to buy, they crafted their own tail tank. After creating several other accessories, Swora and Diehl teamed up with metalworking expert Kai Jockel to found SW-MOTECH in 1999. Since that time, the company has been dedicated to building high-quality accessories in the areas of luggage, protection, safety, ergonomics, navigation, and seat modification.

In total, the SW-MOTECH portfolio comprises a big range of proprietary products. The diversity of products ranges from those ION and EVO tank rings to aluminum engine guards, crash bars, handguards, headlight guards and center stands to name a few. In other words, everything needed for a true adventure. ■

» Learn more about SW-MOTECH from your Parts Europe rep and by checking out <https://sw-motech.com>.



The Urban ABS stop case is made from a lightweight, durable ABS material. Expanded, its interior has enough room for a full-face helmet.



The ION and EVO tank rings from SW-MOTECH make it quick and easy to mount and lock one of the company's tank bags firmly into place.



Your customers can mount that new Urban ABSE top case using the company's Adventure-rack.



## Tough and Capable Tires and Wheels for Off-Road Work

**M**oose Utility Division has expanded its lineup of ATV tires in the European market with the addition of the Splitter and Tuff Trac designs. At the same time, Moose Racing has introduced the 545X wheel for ATV and UTV applications, offering customers a sporty style that is still capable of hard work.

ATV riders in Europe have two additional tire options with the Splitter and Tuff Trac, which are both REACH certified and E-marked. Both of the tires are available in sizes to fit a vast range of ATV applications, but each tire has its own distinct character.

Moose Utility Division designed the Splitter tire to tackle a wide range of terrain, making it extremely versatile. The 6-ply Splitter features a round shoulder knob design that improves cornering and braking performance, so riders can be confident out on the trail. The directional design of the tire boosts performance, too, and it promotes self-cleaning so the tire maintains its grip and predictability.

The 4-ply Tuff Trac Tire is an economically-priced replacement tire that is especially good over rutted terrain. The wide tread profile improves tracking through ruts for a smoother ride. Like the Splitter tire, the Tuff Trac features a directional design for optimal self-cleaning.

The Splitter and Tuff Trac tires join the Switchback and Rigid tires already available from Moose Utility Division. Ranging from the aggressive tread of the Switchback, which can handle even the toughest terrain, to the workhorse Rigid for the heaviest UTVs, Moose Utility Division offers off-road tires for a wide variety of requirements.

The design of the 545X wheel speaks for itself. Its edgy style makes it a perfect complement for a sport UTV or ATV. The wheel is even branded under the Moose Racing name to drive home its more aggressive looks and capabilities. Available in 14x7 and 15x7 sizes, the 545X will fit a host of UTV and ATV models.

Of course, the 545X wheel is about a lot more than just looks. Like all of the other wheels available from Moose Utility Division and Moose Racing, every single 545X wheel is X-rayed on the production line to ensure that it is a quality, reliable part that will hold up on the go.

Each 545X wheel comes with the center caps. A lug nut kit, available separately, includes 16 lug nuts and four valve stems. ■

» *Talk to your Parts Europe rep for more details about the full range of Moose Utility Division tires and Moose Racing wheels. Find complete specs and applications at [www.mooseutilities.com](http://www.mooseutilities.com).*



Moose Racing's new 545X wheel is a tough and stylish option for your sport UTV and ATV owning customers.



Tuff Trac tires



Splitter tires

**BIG BIKE PARTS™**

# New Brand Lineup

## Big Range of Products Now Available

**B**ig Bike Parts®, Show Chrome Accessories®, UltraGard® and Hopnel™ are the latest additions at Parts Europe, and between these four brands dealers now have direct access to a wide range of parts and accessories.

The range includes everything from air and oil filters and audio kits to chrome dress-up accessories and motorcycle covers. There is also an extensive collection of packs, pouches, trunk and saddlebag organizers, lighting kits and a lot more.



Hopnel offers custom-fit trunk and saddlebag liners, as well as a big lineup of pouches, packs, bags and other similar products.



UltraGard is the brand behind more than 30 new and unique motorcycle cover fitments and designs, including a cover for Can-Am's new sport-oriented Ryker.

designs, incorporating a custom fit, high-reflective, highly visible piping, elastic hems for a snug fit and tie-down points to minimize wind flapping.

These water-resistant polyurethane coated UltraGard Classic covers feature windshield liners, heatshields, antenna access panels, centering tags and zippered storage pouches. UltraGard covers including the new budget-priced Essentials™ line are designed for a custom fit and great protection.

**Big Bike Parts**, the parent company behind all this, was founded in 1981 and over its 38 years of operation this Rice Lake, Wisconsin, USA company has brought more than 5,000 unique parts and products to the powersports marketplace.

**Show Chrome Accessories** has been around since the beginning. Today, along with a full assortment of side covers, frame covers, cowls, bellypans, racks, hitches, fender extensions, pegs, footboards and more, they design windshields, air deflectors and the LampGard™ headlight protectors. Show Chrome Accessories also produces fog lights, driving lights and LED replacements. The primary focus for all these great accessories is touring motorcycles and metric cruisers, with a major focus put on the Honda Gold Wing and Can-Am Spyder/Ryker.

**UltraGard** was launched in 1993 to pick up where Big Bike Parts left off after it brought its first motorcycle cover to the market in 1988, a cover for the GL1500 Gold Wing. Since then UltraGard has developed and delivered more than 30 new unique motorcycle cover fitments and



Show Chrome Accessories manufactures a broad lineup of aftermarket accessories, including lights, side covers, fender extensions, footboards, windshields, and air deflectors.

Then there's **Hopnel**, the sewn products division of Big Bike Parts. Along with the popular Hopnel custom-fit trunk and saddlebag liners, there is a whole assortment of pouches, packs and more. The range includes dash pouches, windshield pouches, fairing pouches, highway-bar storage bags, trunk organizers, saddlebag and tank bras, smartphone pouches, and map pouches. Hopnel also sews all the armrest pads and backrest pads for Show Chrome Accessories. ■

» Talk with your Parts Europe rep about all these new brands and parts, and get further information at [www.bigbikeparts.com](http://www.bigbikeparts.com).



# Sprockets for Speed

## Lightweight, Self-Cleaning Sprockets

**G**earing up for a new product release means kicking manufacturing into high gear to ensure there is plenty of stock available. That is exactly what JT Sprockets has been doing in recent months with its new SC lightweight rear sprocket, which is specifically designed to be a versatile, premium choice for motocross racers. Judging by the feedback from early testers of the sprockets, that stock of new product is going to go quickly.

that provides a barrier against the elements as well as an attractive aesthetic.

The SC sprocket might be lightweight, but that doesn't mean it is weak. In addition to the strength garnered by the expertly-engineered design, the sprocket is made from heat-induction hardened C45 steel, which lasts up to six times longer than an aluminum sprocket. As an added bonus, the steel construction also extends the chain life.

JT Sprockets, one of the companies in the Bike Alert Group, produces more than 18 million sprockets a year, with applications for an incredible range of motorcycles and ATVs. That huge production number makes JT Sprockets a leader



The new SC lightweight rear sprocket from JT Sprockets is lighter and stronger than stock. The self-cleaning design means there is less build-up and mud during a race.

The SC lightweight rear sprockets are lighter and stronger than stock, offering racers a distinct advantage when it comes to both longevity and weight savings. They are also self-cleaning to ensure less build-up of dirt and mud during a race. JT Sprockets is offering the SC lightweight range in three sizes, covering most of the popular motocross applications.

The weight savings and self-cleaning capability are the result of a unique design that does not compromise the reliability of the sprocket. The reliability factor gets an extra boost from the high-quality black zinc finish

in aftermarket sprockets, but the company's focus is as much on quality as it is on quantity.

Leading-edge technology is combined with well-sourced materials to produce a quality sprocket range with outstanding value. While the sprockets may not be the most inexpensive on the market, the construction methods and materials used mean that not only will the sprocket last longer, but the drive chain will, too. ■

» *Talk to your Parts Europe rep about the new SC lightweight rear sprocket, and how you can take advantage of the current pricing. Learn more about JT Sprockets at [www.jtsprockets.com](http://www.jtsprockets.com).*



## 2020 Off-Road Collection High-Performance Moto Gear

**T**he new Alpinestars 2020 Motocross/Off-Road Collection is bristling with high-performance products, innovation and futuristic thinking, all researched and developed by Alpinestars' roster of world-class dirt riders. The collection shows the company is expanding its range of lightweight, breathable and durable products with the launch of exciting new colorways designed to ensure riders stand out from the crowd on the dirt or the track.

These products are bolstered by the new Monster MX Collection, which offers fresh, distinctive and eye-catching

boasts a vented poly-fabric main chassis construction for moisture-wicking as well as a performance. Perforated mesh inserts around the collar offer excellent breathability, especially when using Alpinestars BNS neck support.

Other rider-friendly design features include extended perforation inserts on the side torso and forearms for excellent airflow, and pre-curved sleeves for maximum comfort and performance. An extended tail is compatible with Alpinestars MX pants and ensures a perfect riding fit. The comfort neck collar with raglan construction allows for easy entry and exit, and there are seamless collar and cuffs for optimum levels of weight-saving and durability. The wrist cuffs feature stretch inserts for an excellent fit and a convenient in and out.

The same attention to detail has been applied to the ET Pants. Boasting a multi-panel, poly-fabric construction with special coating for excellent strength and durability, these pants are also equipped with innovative, strategically positioned four-way stretch panels for an optimized riding fit. This offers complete freedom of movement while riding, and a heavy poly-fabric reinforcement on the seat area to provide high levels of abrasion resistance.

The ET pants also come with localized perforation zones which ensure cooling airflow, and Alpinestars' exclusive Vector back panel gives riders maximum rider comfort and flexibility when riding. The Alpinestars' Babel knee design features a pre-bent, reinforced and padded 3D knee construction with hidden stretch spandex expansion gussets for an excellent fit in the riding position. There's also a lightweight and ventilated mesh lining with stretch panel inserts for a better fit while riding. Leather panels on the inner leg provide effective heat resistance, grip and comfort, and there's an inner hip pocket for safe key or coin storage.

Completing the pants/jersey combo are Alpinestars Monster Raptor and Ammo gloves. The Raptor features an embossed neoprene cuff and strap closure, a synthetic suede palm, and the thumb and patch are reinforced for durability. The Ammo has a short cuff, a synthetic suede palm, strap closure and a sublimated graphic on the backhand. ■

» *Talk with your Parts Europe rep for more details about the collection, and check out [www.alpinestars.com](http://www.alpinestars.com).*



Alpinestars' new Monster MX Collection features the ET jersey and pants, as well as the Ammo glove.

Monster colorways as well as the performance, comfort and durability your customers expect from Alpinestars.

The ET Jersey is inspired by the Monster apparel that 2019 Lucas Oil AMA Pro Motocross 450cc Champion Eli Tomac wears while racing. Extremely lightweight, this jersey

# Crazy Eights

## On-Road Protection and Style

**A**lpinestars' range of road riding jackets, shoes and gloves is inspired by the company's rich history of competing at the very highest levels of racing, and draws heavily on lessons learned from the asphalt. By using feedback gathered directly from the riders themselves, the company has created a range that offers supreme levels of protection, performance and comfort.

The Crazy Eight Leather Jacket typifies this approach. The Crazy Eight is a stylish and tailored full leather jacket (Category II Certified according to PPE Regulation 2016/425 A Class) that incorporates a flannel removable liner, making it ideal for riding in a variety of climates. Featuring a full grain leather main shell construction for enhanced levels of abrasion resistance and durability, the Crazy Eight has a natural finish for a truly soft and luxurious feel. Alpinestars' Bio Lite shoulder and elbow protectors are fitted as standard for protection against impacts.

Other neat touches include vertical quilted panel detailing for enhanced comfort, pre-curved sleeves for reduced rider fatigue and a zipper and snap sleeve cuff closure with adjustment to ensure a secure, personalized fit. This jacket is also equipped with an ergonomic collar for comfort, and a leather tab with snap button closure for ease-of-use. Two zippered hand pockets keep items safely stowed, and there's also an interior waterproof wallet/ document compartment pocket. There are two further large pockets in the lining for multi-purpose use.

The urban-styled CR-6 Drystar® riding shoe is equally considered. The shoe features an advanced construction with fine mesh and specific breathable windows for high levels of breathability and airflow. It is also equipped with Alpinestars Drystar membrane between the upper and lining for 100 percent waterproof performance in the toughest of conditions.

This shoe is designed for enhanced comfort and breathability, with a higher tongue in Nubuck microfiber for high levels of abrasion resistance. A sophisticated hook

and loop strap combined with a traditional lacing system ensures a comfortable, customizable fit. There are also internal reinforcements on the toe box and heel counter for additional structure, support and impact resistance. Alpinestars' anatomical double density ankle disks layered under the upper, as well as an external lateral ankle protector, provide strategic protection in critical areas.



Crazy Eight jacket

S Max Drystar glove

CR-6 Drystar riding shoe

The jacket and shoes are complemented by the S Max Drystar glove. Constructed from a mixture of leather and stretch mesh for high levels of durability and rider comfort, this short glove includes a Drystar liner to offer sports riders effective protection against the elements. This glove also has sturdy knuckle protection and finger sliders and is equipped with a touchscreen compatible fingertip for use with GPS systems and smartphones. ■

» Talk with your Parts Europe rep for more details and check out [www.alpinestars.com](http://www.alpinestars.com) for more information.

**OptiMATE**

# Smart Battery Leads

## Avoid Premature Battery Replacement

**W**hen stored, a motorcycle's battery slowly discharges due to draw by *always-on* circuitry, including the processor that retains vehicle settings. A 12.8V / 13.2V Lithium battery discharges faster as it has less reserve capacity – Amp-hour (Ah) – than a sealed 12V AGM lead-acid battery. Both AGM and Lithium batteries risk a shorter lifespan if discharged too low, with lithium's risk higher.

OptiMate's smart battery leads can help you and your customer avoid unnecessary and premature battery replacement.

Three LED lights display the battery's charge level and ability to start the engine. **Green** means the battery is start ready and charged. **Yellow** means the engine will start, but the battery soon needs to be charged. **Red** means the engine might not start, immediately recharge to avoid permanent battery damage. Recharging is made easy via the weather protected charge port. The new innovative dual ring design fit battery posts with M6 or M8 bolts.

OptiMate O-127 (p/n 3807-0319) is ideal for 12.8V / 13.2V lithium batteries. A fourth LED blinks rapidly if vehicle charge voltage exceeds 14.6V, warning that risk of permanent battery damage is high if overcharging continues.

OptiMate O-124 (p/n 3807-0317) is ideal for 12V AGM and STD lead-acid batteries. Its four charge-level lights cover the voltage range of all lead-acid batteries, from STD wet cell to sealed AGM that hold a higher voltage. It is also available in a Jar of 20 (p/n 3807-0491), ideal for monitoring of multiple vehicles on the showroom floor.

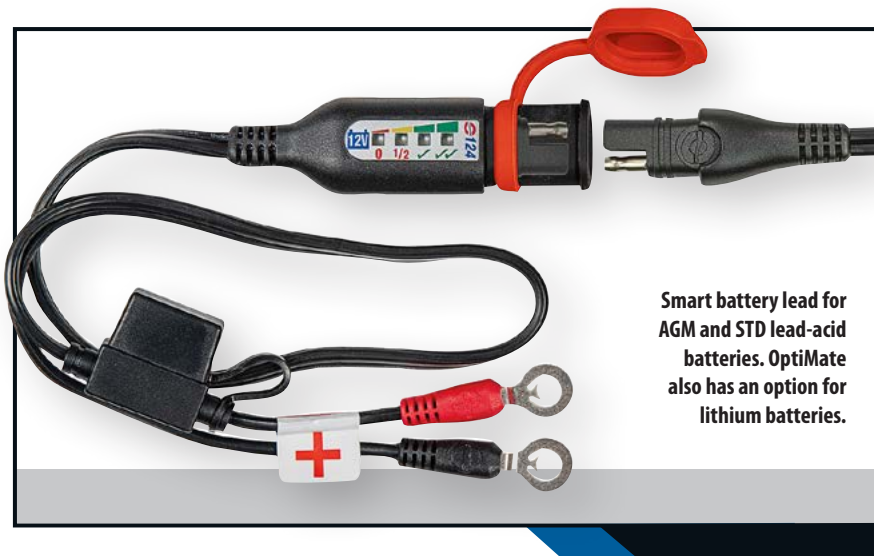
Talk with your Parts Europe sales rep for more details and get further information at <https://optimate1.com>.

### DE Intelligente Batteriekabel – Vorzeitigen Ausfall der Batterie vermeiden

Die Batterie eines abgestellten Motorrads wird durch Dauerverbraucher, etwa den Prozessor, der die Fahrzeugeinstellungen speichert, allmählich entladen. Eine 12,8-V-/13,2-V-Lithium-Batterie entlädt sich schneller, da sie eine geringere Reservekapazität – Amperestunden (Ah) – hat als ein versiegelter 12-V-AGM-Bleiakku. Bei AGM- und Lithium-Batterien kann sich die Lebensdauer verringern, wenn sie zu stark entladen werden, wobei das Risiko bei einer Lithium-Batterie höher ist.

OptiMates intelligente Batteriekabel können Ihnen und Ihrem Kunden helfen, einen unnötigen vorzeitigen Batteriewechsel zu vermeiden.

Drei LEDs geben Auskunft über den Ladezustand des Akkus und



Smart battery lead for AGM and STD lead-acid batteries. OptiMate also has an option for lithium batteries.

seine Fähigkeit, den Motor zu starten. Grün bedeutet, die Batterie ist startbereit und geladen. Gelb heißt, dass der Motor anspringt wird, die Batterie jedoch möglichst bald geladen werden muss. Rot bedeutet, dass der Motor möglicherweise nicht anspringt und die Batterie sofort geladen werden muss, um bleibende Schäden zu vermeiden. Der witterungsbeständige Ladeanschluss erleichtert das Aufladen. Dank des neuen, innovativen Designs mit zwei Ringklemmen ist der Anschluss an Batteriepole mit M6- oder M8-Schrauben möglich.

OptiMate O-127 (Teilenr. 3807-0319) ist ideal für 12,8-V-/13,2-V-Lithium-Batterien. Eine vierte LED blinkt in rascher Folge, wenn die Ladespannung des Fahrzeugs 14,6 V überschreitet und macht darauf aufmerksam, dass die Batterie dauerhaft beschädigt werden könnte, wenn weiterhin mit zu hoher Spannung geladen wird.

OptiMate O-124 (Teilenr. 3807-0317) ist ideal für 12-V-AGM- und -STD-Bleiakkus. Die vier Ladepegelanzeigen decken den Spannungsbereich aller Bleiakkus ab, von STD-Nasszellen bis hin zu versiegelten AGM-Batterien, die eine höhere Spannung aufnehmen. Das Kabel ist auch in einer Packung mit 20 Stück erhältlich (Teilenr. 3807-0491), ideal für die Überwachung mehrerer Fahrzeuge im Präsentationsraum.

Sprechen Sie mit Ihrem Parts Europe Verkaufsrepräsentanten über weitere Details, nähere Informationen finden Sie auf <https://optimate1.com>.

### FR Câbles de batterie intelligents – Éviter le remplacement prématuré de la batterie

Une batterie de moto stockée se décharge lentement, car son circuit est toujours en marche, notamment le processeur qui conserve les réglages du véhicule. Une batterie de 12,8 V/13,2 V au lithium se décharge plus rapidement, car sa capacité de réserve (ampères-heures (Ah)) est inférieure à celle d'une batterie au plomb-acide AGM de 12 V étanche. La durée de vie des batteries AGM et au lithium risque d'être plus courte si celles-ci se déchargent à un niveau trop faible. Le risque pour les batteries au lithium est, quant à lui, plus élevé.

Les câbles de batterie intelligents OptiMate peuvent vous aider, vous et votre client, à éviter un remplacement inutile et prématuré de la batterie.



Trois voyants DEL indiquent le niveau de charge de la batterie et la capacité de démarrage du moteur. Un voyant vert signifie que la batterie est chargée et prête à démarrer. Un voyant jaune signifie que le moteur va démarrer, mais que la batterie devra bientôt être chargée. Un voyant rouge signifie que le moteur pourrait ne pas démarrer, et qu'il faut recharger immédiatement pour éviter d'endommager la batterie de façon permanente. La recharge est facilitée par le port de charge résistant aux intempéries. La nouvelle conception innovante à double anneau s'adapte aux bornes de batterie avec des cosses M6 ou M8.

L'OptiMate O-127 (réf. 3807-0319) est idéal pour les batteries de 12,8 V / 13,2 V au lithium. Un quatrième voyant DEL clignote rapidement si la tension de charge du véhicule dépasse 14,6 V, avertissant que la batterie risque fortement d'être endommagée si la surcharge continue.

L'OptiMate O-124 (réf. 3807-0317) est idéal pour les batteries AGM 12 V et plomb-acide STD. Ses quatre voyants de niveau de charge couvrent la plage de tension de toutes les batteries plomb-acide, de la batterie à cellule humide STD à la batterie AGM scellée qui contient une tension supérieure. Il est également disponible en pot de 20 (réf. 3807-0491), idéal pour la surveillance de plusieurs véhicules dans la salle d'exposition.

Pour plus d'informations, contactez votre représentant Parts Europe et obtenez de plus amples informations à l'adresse <https://optimize1.com>.

#### IT Smart Battery Leads

##### – Come evitare la sostituzione prematura della batteria

La batteria di una motocicletta ferma si scarica lentamente a causa dell'alimentazione dei circuiti sempre attivi, incluso il processore che mantiene le impostazioni del mezzo. Una batteria al litio da

12,8 V / 13,2 V si scarica più rapidamente poiché ha una capacità di riserva inferiore (Ah, Amp/ora) rispetto a una batteria ermetica al piombo-acido AGM da 12 V. Sia le batterie AGM che quelle al litio rischiano di avere una durata di vita più breve se si scaricano troppo, con un rischio maggiore per quelle al litio.

OptiMate, grazie ai suoi cavi per batteria intelligenti, può aiutare te e i tuoi clienti a evitare una sostituzione della batteria prematura e non necessaria.

Tre indicatori a LED mostrano il livello di carica della batteria e la possibilità di avviare il motore. Il verde indica che la batteria è pronta e carica. Il giallo indica che il motore si avvia, ma che la batteria dovrà essere caricata al più presto. Il rosso indica che il motore potrebbe non avviarsi: ricaricare immediatamente la batteria per evitare danni permanenti. L'operazione di ricarica è facilitata dalla porta di ricarica a prova di intemperie. L'innovativo design a doppio anello si adatta ai poli della batteria con bulloni M6 o M8.

OptiMate O-127 (codice 3807-0319) è ideale per le batterie al litio da 12,8 V / 13,2 V. Un quarto indicatore a LED lampeggia rapidamente se la tensione di carica del veicolo supera 14,6 V, avvertendo che c'è un elevato rischio di danni permanenti alla batteria se il sovraccarico continua.

OptiMate O-124 (codice 3807-0317) è ideale per le batterie al piombo-acido AGM e STD da 12 V. I suoi quattro indicatori del livello di carica coprono la gamma di tensione di tutte le batterie al piombo-acido, da quelle a cella umida STD a quelle ermetiche AGM che mantengono una tensione più elevata. È disponibile anche in un contenitore da 20 (codice 3807-0491), ideale per il monitoraggio di più veicoli esposti nel motosalone.

Per ulteriori informazioni contatta il tuo rappresentante vendite Parts Europe e visita <https://optimize1.com>. ■

## BATTERY GOOD? No more guessing!



**OptiMate** Battery status  
monitor at a glance!

[optimize1.com](https://optimize1.com)



PSR

# Getting Adjusted

## Fine-Tuning the Fit of a Motorcycle

**S**ometimes, the stock setup of a motorcycle just isn't the right fit for a rider. PSR has solutions to help your customers make their motorcycles as comfortable as possible, including some great products for V-twins, dual-sports and dirtbikes.



ANTHEM ADJUSTABLE LEVERS

PSR offers two styles of adjustable levers for Harley-Davidsons, including the Anthem and Journey. Both styles are designed to increase comfort, reduce hand fatigue and add a touch of style. The patent-pending levers have an easy-click dial that adjusts the distance between the lever and the bar, with six adjustment options so a rider gets exactly the right setup.

The levers are especially good for narrowing the distance between the lever and the bar, making the Anthem and Journey ideal choices for riders who want better leverage

and control. Each lever is CNC machined from a high-quality aluminum so they are durable, but lightweight.

For dual-sport and off-road riders, PSR offers lowering links for a lot of applications as well as a dual-sport adjustable kickstand. The lowering links are ideal for reducing



JOURNEY ADJUSTABLE LEVERS

the seat height of a bike. Because they are direct bolt-on replacements for the OEM links, making the swap is easy.

The dual-sport kickstand pairs perfectly with the lowering links. It has an adjustable length of up to 38.1mm depending on the application. The forged aluminum kickstand is lightweight, and it is topped with a gunmetal finish that increases durability. The encased heavy-duty spring is designed to stand up to aggressive dual-sport riding, too. ■

» Get more details about PSR solutions from your Parts Europe rep and visit <http://psr-usa.com>.

PSR

Dualsport Kickstand



Luggage Rack

Dualsport Mirror



Denali Mirror



Cam Chain Tensioner

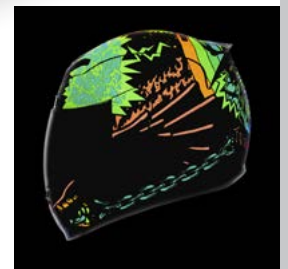
## ICON

### AIRMADA TL HELMET

- » Injection-molded polycarbonate shell for strength and durability
- » Recessed twin-channel super vent with industry-leading intake and exhaust ports for increased cooling
- » Fog-free Icon Optics™ shield with Prolock™ shield locking system
- » Four shell sizes for ultimate fit and comfort
- » Adjustable chin and forehead venting system maintains continual temperature for increased comfort in any riding situation
- » Rapid-release shield change system
- » Ventral primary intake improves cooling airflow
- » Removable molded breath deflector helps prevent fogging
- » Fully removable and washable Hydradry™ moisture-wicking interior
- » Easy-to-adjust vent switch for superior airflow control
- » All World Standard meets or exceeds the following: DOT FMVSS 218 (USA), ECE 22-05 Europe), SAI AS1698 (Australia) and SG (Japan) safety and testing standards



SIZE	PART #
XS	0101-12388
S	0101-12389
M	0101-12390
L	0101-12391
XL	0101-12392
2X	0101-12393
3X	0101-12394



## ALPINESTARS

### CRAZY EIGHT LEATHER JACKET

- » Full-grain leather main shell construction with natural finish for abrasion resistance, durability and a soft luxurious feel
- » Zipper and snap sleeve cuff closure and adjustment for personalized fit and security
- » Ergonomic collar with padded details in specific zones to guarantee comfort and a personalized fit
- » Elasticated inserts for the arm aperture to aid movement while riding
- » Two zippered hand pockets for peace-of-mind closure
- » Pre-curved sleeve construction for comfort and movement in the riding position
- » Lower back adjustment with snap-button security for personalized fit when riding
- » Vertical quilting in the shoulder with internal pressed foam to guarantee comfort and provide a more robust performance in critical areas
- » Rivet metal logo detail on the right sleeve
- » Unique leather zipper pull for easier opening and closure
- » Lower back extended for riding comfort and coverage
- » All interior detailing finished with perforated soft leather
- » Flannel internal lining offers versatile weather protection in colder climates
- » Chest protector compartment can be upgraded with Alpinestars CE-certified Nucleon chest protector insert
- » Back protector compartment can be upgraded with Alpinestars CE-certified Nucleon back protector insert
- » Interior waterproof wallet/document compartment pocket and two large pockets in the lining for multi-purpose use
- » Loop waist connection allows Alpinestars Pro denim pants
- » Level 1 CE-certified Bio Light shoulder and elbow protectors
- » CE-certified
- » Available in men's size S-3X

SIZE	BLACK	TOBACCO BROWN
S	2810-3510	2810-3516
M	2810-3511	2810-3517
L	2810-3512	2810-3518
XL	2810-3513	2810-3519
2X	2810-3514	2810-3520
3X	2810-3515	2810-3521



## ALPINESTARS

### A-1 PLUS CHEST GUARD

- » Base layer with strategically placed padded zones on the shoulder, biceps and chest area, to provide additional protection against tire roost, gravel and small stones
- » Compatible with all Alpinestars roost guards and chest protectors (A-1, 1-1 Plus, A-4 Max, Sequence Chest, Bionic chest, A-10)
- » Knitted construction chassis is lightweight, breathable and provides a comfortable tight fit while being stretchable enough so as not to limit any rider movements
- » Knitted construction requires less stitching which increases rider comfort

SIZE	BLACK/YELLOW
M/L	2701-0977
XL/2X	2701-0978



## LEGEND SUSPENSION

### AXEO43 INVERTED HIGH-PERFORMANCE FRONT SUSPENSION SYSTEMS

- » Replaces the asymmetrical stock internals with a high-performance twin cartridge set (despite different mounting requirements)
- » Drop-in cartridge that installs easily in a few simple steps
- » Includes two mono-tube, dual-chambered, suspension fluid-filled damper cartridges
- » Nitrogen chamber with internal floating piston
- » Sealed with a high-pressure core Schrader valve specific to nitrogen
- » Damper piston and deflective disc shim stack
- » Performance-rated springs with internal linear spring guide and top-out springs
- » Machined 303 stainless steel threaded preload adjuster
- » Micrometer preload adjuster and internal linear spring guide is designed for and unique to the Legend AXEO43 system
- » Increased preload range allows fine tuning for various riding styles and weights
- » Internal rebound top-out spring
- » Hydraulic bumper with polyurethane bump stop
- » Ride-quality is smooth and controlled
- » Improves stability, cornering and traction
- » Eliminates front-end dive during aggressive braking and maneuvering
- » Firm feel for high-speed sweeping turns
- » Eliminates bottoming out on large bumps or potholes
- » Reduces dragging floorboards and pegs
- » Designed for optimum performance with Legend rear suspension system

PART #	DESCRIPTION
0414-0549	For 18-20 FXFB/FXLRS (43 mm forks)
0414-0589	For 18-20 FLSB (43 mm forks)
0414-0590	For 19-20 FXDRS (43 mm forks)



## PULSE FIRE PANTS

- » Abrasion-resistant polyester and nylon are bound together with double- and triple-stitched seams to ensure durability
- » Purpose built TPR features
- » Athletic mesh inner liner
- » Interior hip pocket
- » Available in men's even waist sizes 28-44

SIZE	MIDNIGHT/POWDER BLUE	BLACK/MAROON
28	2901-8444	2901-8453
30	2901-8445	2901-8454
32	2901-8446	2901-8455
34	2901-8447	2901-8456
36	2901-8448	2901-8457
38	2901-8449	2901-8458
40	2901-8450	2901-8459
42	2901-8451	2901-8460
44	2901-8452	2901-8461

## PULSE FIRE JERSEYS

- » Cut and finish allow for an exceptional fit that minimizes unnecessary material, without hindering mobility
- » Moisture-wicking material designed to complement the tailored fit pulls the moisture away from skin to keep rider cool and dry
- » No-fade sublimated graphics
- » Heat transfer neck label
- » Available in men's sizes S-3X

SIZE	MIDNIGHT/POWDER BLUE	BLACK/MAROON
S	2910-5806	2910-5812
M	2910-5807	2910-5813
L	2910-5808	2910-5814
XL	2910-5809	2910-5815
2X	2910-5810	2910-5816
3X	2910-5811	2910-5817



## PARTS EUROPE

### LITHIUM ION BATTERIES

- » Lithium ion Polymer LiFePO4
- » No heavy metals or hazardous acid
- » Non-explosive and non-combustible
- » Higher CCA's over lead acid batteries
- » Lighter than lead acid batteries
- » Includes built-in easy-to-read battery capacity indicator
- » Mounts in any direction
- » JIS standard sizes
- » Up to 12 months shelf life before boosting is needed
- » Available for most popular powersports applications



**W** ■ ■ HIGH PERFORMANCE PISTONS  
**Wossner**®  
 RESEARCH & DEVELOPMENT

**MANUFACTURER OF  
 FORGED PISTONS**



[woessner-kolben.de](http://woessner-kolben.de)  
[wossnerpistons.com](http://wossnerpistons.com)



For further information please contact your Parts Europe Sales Representative

**PARTS  
 EUROPE**  
[www.partseurope.eu](http://www.partseurope.eu)

## VANCE & HINES

### UPSWEEP SLIP-ON MUFFLER FOR HONDA REBEL 300/500 17-19

- » Mild steel with matte black ceramic finish
- » Tapered cone muffler and eliminator style end cap
- » Perforated baffle with fiberglass wrap
- » Laser-engraved riveted badge
- » Instructions and mounting hardware included
- » Must remove stock slip-on

PART # 1811-3876



**A NEW  
ADVENTURE  
DAWNS.**

**TRAILMAX  
MERIDIAN**

The all-new tyre for bikes with a sense of adventure – a class-leading performer on road and trail.

 **DUNLOP**

# 2020 **FatBook**<sup>TM</sup>

## **Cover Bike** 2019 FLHT **STANDARD**

Customized by **HOFMANN DESIGNS**



**ALLOY ART:** Swingarm, Fork Legs w/ Fender Mounts, Caliper Mounts

**ARLEN NESS:** Pro Short Front Fender, 10-Gauge Rocker Box, Cam, Lifter Block, Transmission Top and Saddlebag Latch Covers, 10-Gauge Engine Stabilizer Link, Clutch Actuator, Pushrod Tube Kit and Saddlebag Levers

**BASSANI:** Short Road Rage III 2-into-1 Exhaust System\*

**COMETIC:** Gaskets & O-Rings

**CUSTOM DYNAMICS:** ProBeam LED Headlight

**DIAMOND ENGINEERING:** Polished 12-Point Hardware

**DRAG SPECIALTIES:** Predator III Seat, Wide Blade Clutch and Brake Levers, Brake Line & Fitting, Clutch Line Adapter & Fork Seal Kit

**HOFMANN DESIGNS:** Carbon Fiber Side Covers, Saddlebags, Saddlebag Lids

**JOKER MACHINE:** Serrated Driver Floorboards, Front LED Turn Signals

**KLOCK WERKS:** 4" Flare Windshield

**LEGEND SUSPENSIONS:** AXE021 Front End Suspension, 13" Remote Reservoir Rear Shocks and Mounts

**MJK PERFORMANCE:** Radial Mount Mono Block Brake Calipers, Adjustable Shifter Kit, Brake Arm Pedal Kit

**PERFORMANCE MACHINE:** Pro-Am Front & Rear Wheels and Brake Rotors, Extended Kickstand, Contour Black Grips

**PIRELLI:** Night Dragon Front & Rear Tires

**S&S:** Super Stock Stealth Air Cleaner Kit\*, Teardrop Air Cleaner Cover

**THRASHIN SUPPLY:** Mid Bend 1" Handlebars

\*Disclaimer: NOT FOR LEGAL SALE OR USE IN CALIFORNIA ON ANY POLLUTION CONTROLLED MOTOR VEHICLES

Check out more details on this bike at various rallies and events throughout the year; or log onto [dragspecialties.eu/bike-builds](http://dragspecialties.eu/bike-builds) to view the complete parts list.

**PARTS  
EUROPE**

[partseurope.eu](http://partseurope.eu)

FROM OUR GARAGE TO YOURS

**DRAG  
Specialties**

[dragspecialties.eu](http://dragspecialties.eu)