

# **DIAGNOSTIC TOOLS**



**TEXA**

**MULTIBRAND DIAGNOSIS TOOL****NAVIGATOR TXB EVOLUTION**

- Processor: CORTEX M3 STM32F103ZG 72 MHz, FLASH 1024 KBytes, SRAM 96 KBytes
- SRAM memory: 16 MBits organized in 1024K x 16 bits
- NAND Flash memory: 8 GBit on an 8-bit bus
- Vehicle battery: 12VDC and 24VDC system management
- External power supply: 8 ÷ 32 V
- USB communication: virtual RS232 via USB 2.0 Device
- Wireless connection: Bluetooth class1 (30 m)
- Electronic switch: 2-way, 13 independent positions
- Diagnostic connector: 16-pin CPC
- Multilingual tool

DESCRIPTION	PART #
Navigator TXB Evolution	<a href="#">3807-0642</a>

**THE SOFTWARE THAT TRANSFORMS DATA INTO SOLUTIONS**

- The IDC5 BIKE software is complete, practical and intuitive, extremely quick to access communication with motorcycles and rapid in all diagnostic phases, from the error identification to its solution.
- Nominal values associated with the error, technical data sheets, interactive wiring diagrams contain 26 years of experience and thousands of successfully solved problems

**SPECIAL ADJUSTMENTS**

The IDC5 software offers a wide range of special adjustments that go beyond the ordinary vehicle servicing, such as:

**HARLEY-DAVIDSON**

- Vehicle configuration change
- Display setting change
- Exhaust valve enabling

**DUCATI**

- Key adaptation
- Anti-theft enabling / disabling

**BMW**

- Odometer alignment
- Speed limiter unlock after running-in for S 1000 R (K47), S 1000 XR (K49) and S 1000 RR (K46)

**BRP and more besides**

- 99 HP limitation adjustment

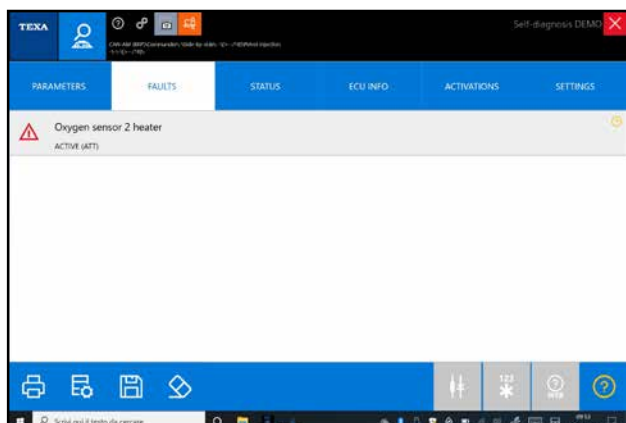
**HONDA**

- Engine ECU reset

**SUZUKI**

- CO adjustment

## ERRORS



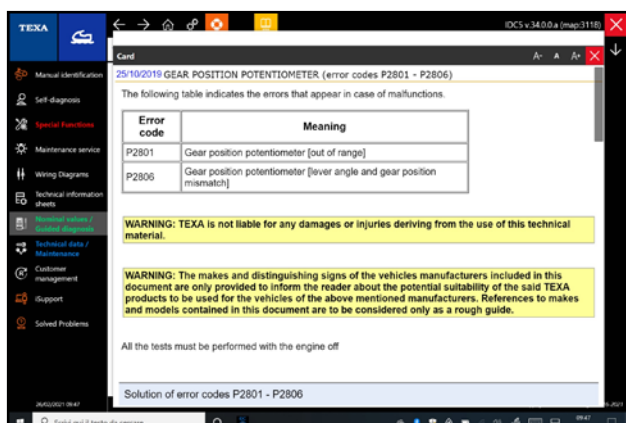
The Errors page instantly displays all the errors in the vehicle, with the related codes and descriptions. From this page, the error reading and clearing can be carried out in a single click, as well as a self-diagnosis test on the selected system.

## DATA SHEETS



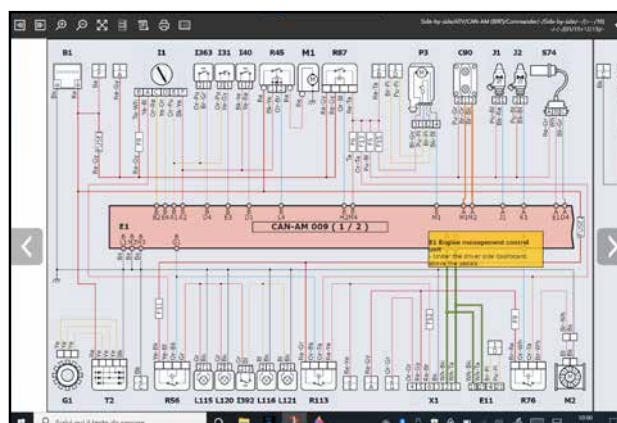
Very accurate information on the selected vehicle, including instructions for performing a manual service reset, overviews of specific mechatronic systems and much more.

## NOMINAL VALUES

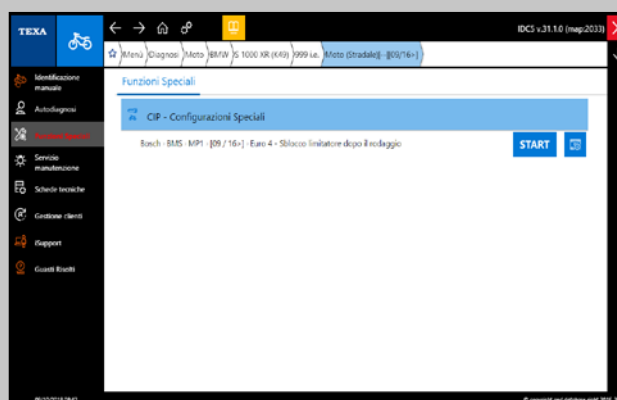
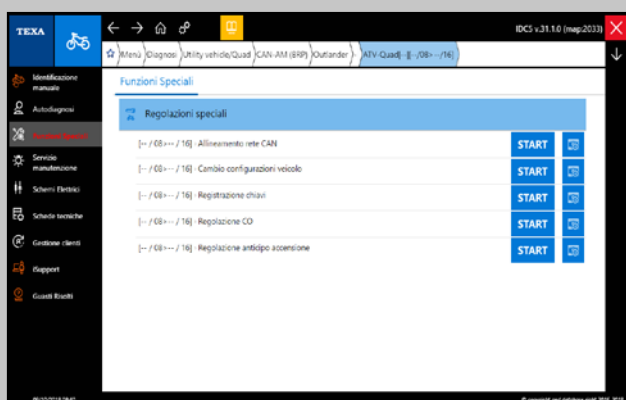


Useful to solve a fault associated with an error code detected in self-diagnosis. They provide a tree diagram to solve the fault.

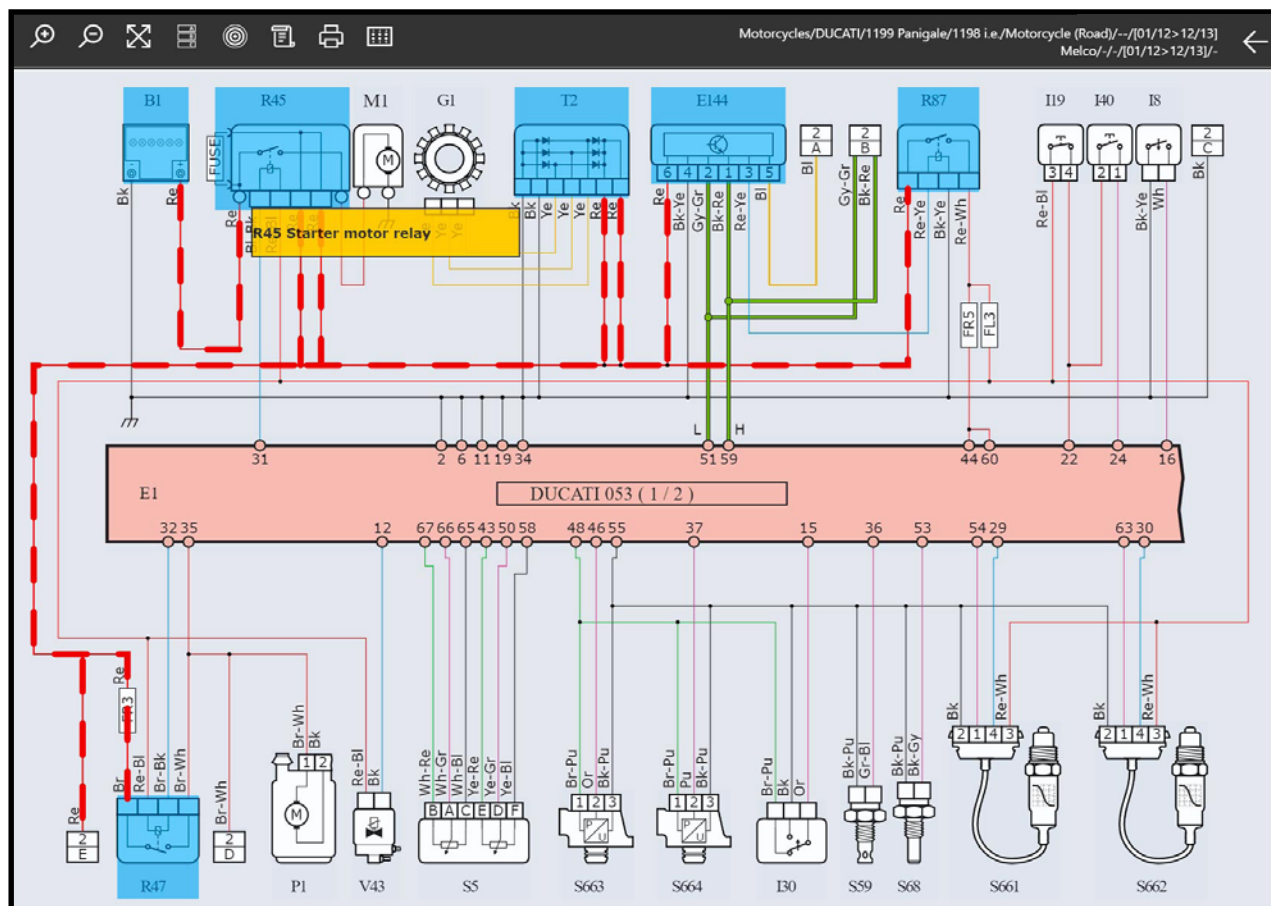
## INTERACTIVE WIRING DIAGRAMS



The animations of the relevant devices create an interactive map with the flow of input and output signals to/from the control units.



### SCHEMATIC VIEW



## COMPATIBLE BRANDS

## MOTORBIKES

AJP  
APRILIA  
BAJAJ  
BENELLI  
BENELLI (DSK)  
BETAMOTOR  
BIMOTA  
BMW  
BOOM TRIKE  
BRIXTON  
MOTORCYCLES  
BROUGH SUPERIOR  
BUELL  
CAGIVA  
CAN-AM (BRP)  
CFMOTO  
CSC MOTORCYCLES  
DAELIM MOTOR  
DAFRA  
DERBI  
DUCATI  
FANTIC MOTOR  
FB MONDIAL  
GAS GAS  
GENERIC  
GEON  
GG TECHNIK  
GILERA  
HARLEY-DAVIDSON  
HISUN  
HM  
HONDA  
HONDA MONTESA

HUSABERG  
HUSQVARNA

HYOSUNG  
INDIAN  
KASINSKI  
KAWASAKI  
KEEWAY  
KELLER  
KSR MOTO  
KTM  
KYMCO  
LAVERDA  
MACBOR  
MALAGUTI  
MASH  
MGK HELLENIC MOTOR  
MH  
MINSK  
MONDIAL  
MOTO GUZZI  
MOTO MORINI  
MV AGUSTA  
ORCAL  
POLARIS  
ROYAL ENFIELD  
SHERCO  
SHINERAY  
SINNIS  
STELS  
SUZUKI  
SWM  
SYM  
TRIUMPH  
URAL

## VERVE MOTO

VICTORY  
VOXAN  
YAMAHA  
ZONGSHEN  
ZONTES

## SCOOTERS

ADIVA  
AEON  
APRILIA  
BENELLI  
BMW  
CFMOTO  
DAELIM MOTOR  
DAFRA  
DERBI  
GILERA  
GOES  
HONDA  
HYOSUNG  
KAWASAKI  
KEEWAY  
KYMCO  
LAMBRETTA  
MALAGUTI  
MBK  
PEUGEOT  
PIAGGIO  
QOODER  
QUADRO  
RIYA  
SINNIS  
SUZUKI

SYM  
TGB  
VESPA  
YAMAHA

## SIDE-BY-SIDE / ATV

ARCTIC CAT  
CAN-AM (BRP)  
CFMOTO  
COLEMAN  
GAS GAS  
GG TECHNIK  
HISUN  
HONDA  
KAWASAKI  
KVN MOTORS  
POLARIS  
POLARIS DEFENCE  
STELS  
SUZUKI  
TGB  
YAMAHA

## JET SKIS

HONDA MARINE  
KAWASAKI MARINE  
SEA-DOO (BRP)  
YAMAHA MARINE

## SNOWMOBILES

ARCTIC CAT  
LYNX (BRP)  
POLARIS  
SKI-DOO (BRP)

STELS  
YAMAHA

## UTILITY VEHICLES

ARCTIC CAT  
CAN-AM (BRP)  
CFMOTO  
COLEMAN  
GEM  
HISUN  
HONDA  
PIAGGIO VEICOLI  
COMMERCIALI  
POLARIS DEFENCE  
POLARIS RANGER  
QUADRIX  
YAMAHA

**MOTOR PUMPS**  
ROSENBAUER

## MINICARS

GRECAV

## ENGINE

BMW  
ROTAX (BRP)  
TO LEARN

## BICYCLES

BROSE E-BIKE





### DIAGNOSTIC CABLE OBD EURO 5

- Complete cable for the serial diagnosis
- For vehicles produced starting from 2019 that are compliant with the EURO 5 emission standard

DESCRIPTION	PART #
Diagnostic cable OBD Euro 5	<a href="#">2120-1187</a>



### DIAGNOSTIC CABLE HD 4/6 PIN

- Complete cable for the serial diagnosis of the make Harley-Davidson
- The cable is made up by three connectors: a 4-way one (diagnostic connector for the models produced up to 2012), a 6-way one (diagnostic connector for the models produced starting from 2012) and a third 2-way connector (power supply)
- In order to carry out a proper diagnosis, only one diagnostic connector must be connected to the motorcycle, based on the model
- Instead, the power cable must be connected to the vehicle's battery only if the tool is not powered by the diagnostic socket

DESCRIPTION	PART #
Diagnostic cable HD 4/6 pin	<a href="#">2120-1188</a>



### DIAGNOSTIC CABLE BRP GROUP

- T-cable required to guarantee a steady communication during the diagnosis of Sea-Doo (BRP), Ski-Doo (BRP) and Lynx (BRP) vehicles, which will otherwise be cut off after 30 seconds in key ON and engine OFF
- This cable must be connected between the diagnostic cable 3151/AP43 (or 3151/AP19) and the vehicle's socket
- The power clamps provided with the diagnostic tool must be connected to the 2-way connector

DESCRIPTION	PART #
Diagnostic cable BRP group	<a href="#">2120-1189</a>



### DIAGNOSTIC CABLE SUZUKI

- Terminal cable for the serial diagnosis of Suzuki (usually vehicles produced after 2003) and of the Arctic CAT ATV quads
- It covers all the diagnostic systems
- The cable can also be used on the models Boom Trike Intruder 1800, Hayabusa and Kawasaki Epsilon 250

**NOTE: The terminal cable must be connected to the main 3151/AP01 cable**

DESCRIPTION	PART #
Diagnostic cable Suzuki 03-	<a href="#">2120-1190</a>



### DIAGNOSTIC CABLE HONDA

- Terminal cable for the diagnosis of the Honda, Honda Montesa and Honda Marine vehicles that support the serial diagnosis
- The cable can also be used on the Boom Trike Shadow 750 model and on the injection system of MGK Hellenic Motor vehicles

**NOTE: The terminal cable must be connected to the main 3151/AP01 cable.**

DESCRIPTION	PART #
Diagnostic cable Honda 04-	<a href="#">2120-1191</a>



### DIAGNOSTIC CABLE DUCATI

- Complete Ducati cable compatible with the 4-way socket installed in the latest generation models such as Multistrada 1200, Diavel, Panigale and Scrambler
- This cable can also be used on the Monster and Hypermotard models equipped with a Continental control unit and on the DTC Dynamic Traction Control system

**NOTE: Starting from the Diavel model, the ABS system can be diagnosed using the 3151/AP23 cable. For the models produced previously, the ABS can be diagnosed using the main 3151/AP01 cable.**

DESCRIPTION	PART #
Diagnostic cable Ducati 10-	<a href="#">2120-1192</a>



DIAGNOSTIC CABLE YAMAHA

- Complete cable for the serial diagnosis of the make Yamaha
- The cable is made up by six connectors: a 4-way one (connector for the models with the diagnosis in CAN protocol), a second and a third 3-way one (male and female connectors for the models that require dual or single connection), a fourth and a fifth probe connector (male and female probes for the models that require dual or single connection) and a sixth 2-way connector (power supply)

NOTE: The cable replaces, as a single solution, all the cables produced previously ("3151/AP40", "3151/AP47", "3151/AP49").

DESCRIPTION	PART #
Diagnostic cable Yamaha	2120-1196



DIAGNOSTIC CABLE BMW

- Complete cable for the serial diagnosis of the make BMW. It is compatible with all vehicles produced starting from 1999 until August 2016, whereas it is not compatible with Euro 4 vehicles (produced from September 2016), equipped with an OBD socket
- Furthermore, the cable can be used on the makes GG Technik, Rosenbauer and on the models Husqvarna Nuda 900/R, TR 650 Strada, TR 650 Terra

DESCRIPTION	PART #
Diagnostic cable BMW	2120-1194



DIAGNOSTIC CABLE KTM/HUSQVARNA

- Complete cable for the serial diagnosis of the makes KTM, Bajaj and Husqvarna (vehicles equipped with Keihin control unit)

NOTE: The cable can be used on most of the Bajaj vehicles, except for some models developed in collaboration with Kawasaki where specific cables are required.

The cable has a socket that is compatible with the power clamps needed to power the vehicles without a battery.

DESCRIPTION	PART #
Diagnostic cable KTM/Husqvarna	2120-1195



DIAGNOSTIC CABLE KAWASAKI

- Complete cable for the diagnosis of the Kawasaki models produced after 2010
- Furthermore, the cable can be used on some Bajaj vehicles developed in collaboration with Kawasaki

NOTE: For some models the cable may not manage the diagnosis of the ABS system, which can be diagnosed using the 3151/AP07 cable.

DESCRIPTION	PART #
Diagnostic cable Kawasaki 10-	2120-1193



DIAGNOSTIC CABLE POLARIS/INDIAN/VICTORY

- Complete cable for the serial diagnosis of the makes Polaris, Polaris Defence, Polaris Ranger, Indian, Gem and Victory (models produced starting from 2007)

DESCRIPTION	PART #
Diagnostic cable Polaris/Indian/Victory	2120-1197



CABLE E-BIKE BROSE

- E-Bike 01 diagnosis cable for BROSE systems

DESCRIPTION	PART #
Cable e-Bike Brose	2120-1198



### DIAGNOSTIC CABLE OBD2

- Complete cable compatible with the OBD socket of Euro 3 and Euro 4 vehicles

DESCRIPTION	PART #
Diagnostic cable OBD2	<a href="#">2120-1202</a>



### EMPTY CABLE CASE

- Empty rugged case for Bike and Marine with inner room for Navigator TXB Evolution and diagnostic cables
- With pocket holding AXONE VOICE, AXONE NEMO 2 or AXONE NEMO MINI or a laptop

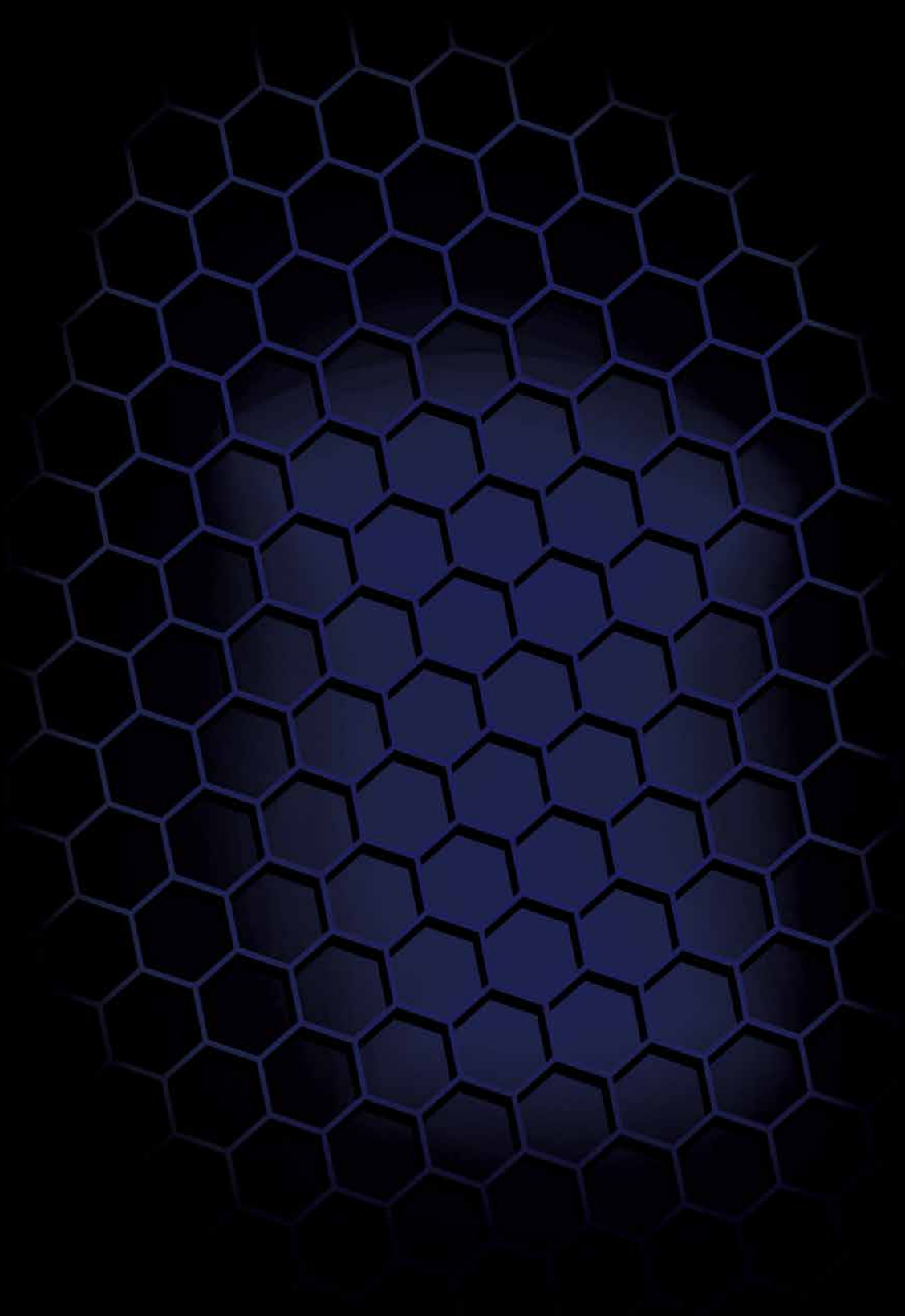
DESCRIPTION	PART #
Empty cable case	<a href="#">3850-0603</a>



### CABLE STARTER PACK

- This case contains the following cables:
  - 3151/AP01 Bike Main Cable
  - 3151/AP05 Triumph/Victory/OBD Cable
  - 3151/AP11 Kawasaki Cable up to 2010 (Requires 3151/AP01)
  - 3151/AP15 Suzuki Cable (Requires 3151/AP01)
  - 3901198 Honda Cable from 2004 (3151/AP20) (Requires 3151/AP01)
  - 3902404 Ducati Cable from 2010 (3151/AP23)
  - 3903439 Kawasaki 2010 On Cable (3151/AP31)
  - 3904607 BMW Diagnostic Cable from 1999 to 2016 (3151/AP37)
  - 3904841 KTM/Husaberg Cable (3151/AP39)
  - 3909878 Yamaha Bike Cable (3151/AP59)

DESCRIPTION	PART #
Cable starter pack	<a href="#">2120-1199</a>



DISTRIBUTED BY



Parts Europe GmbH  
Conrad-Röntgen-Straße 2  
54332 Wasserliesch/Trier  
(Germany)

Tel.: +49 (0) 6501 9695 – 2000  
Fax: +49 (0) 6501 9695 – 2650  
E-Mail: [sales@partseurope.eu](mailto:sales@partseurope.eu)  
Web: [www.partseurope.eu](http://www.partseurope.eu)