



SLIPPERY

2022/23 COLLECTION



////////////////////

S L I P P

////////////////////



After 30+ years of racing, freestyle and play-riding, we've learned a thing or two about comfort and confidence out on the water. Slippery wetsuits, vests, boots and accessories are purpose-built to help riders maximize the enjoyment that time on the water brings to us all. Whether enjoying a weekend cruise with the family, or in hot pursuit of another World Title, Slippery products have got you covered.

CONTENTS

4-7 WETSUITS / TOUR COAT

8-13 VESTS

14-15 GLOVES

16-17 BOOTS / SHOES

18 BOARDSHORTS

19 RASHGUARDS / SPORTSWEAR

20-21 BARS / LEVERS

22 ACCESSORIES

23 FIT / SIZING GUIDE

SLIPPERY

BREAKER WETSUIT

Designed for active riders, the Breaker John & Jacket combo offers excellent performance and mobility while providing a lightweight layer between you and the watercraft. This versatile suit allows you to take control of the elements by utilizing the pieces individually or together for maximum warmth and coverage.

KEY FEATURES

- 2MM NEOPRENE - FLAT-STITCHED SEAMS FOR ULTIMATE COMFORT - FRONT-ZIP JACKET
- 1.5MM TATEX AT KNEE FOR ABRASION RESISTANCE - HOOK AND LOOP SHOULDER CLOSURE ON JOHN
- KEEP-KEY POCKET ON JOHN - 1.5MM AIRPRENE CALF ALLOWS WATER TO DRAIN

COLOR		S	M	L	XL	2XL	3XL
BK/AQ	3201-	0288	0289	0290	0291	0292	0293
BK/CH	3201-	0276	0277	0278	0279	0280	0281
CH/RD	3201-	0282	0283	0284	0285	0286	0287

FIT GUIDE PG.23



JACKET VIEW



JOHN VIEW



BACK VIEW

BLACK/AQUA



BACK VIEW



BLACK/CHARCOAL



BACK VIEW



CHARCOAL/RED

BREAKER PRO

Designed with the serious competitor in mind, the Breaker Pro is maximized to provide comfort, flexibility and breathability in one sleek package. Coupled with a glide skin chest panel to keep the rider's core temperature optimal, the Breaker Pro is a formidable piece of equipment on the water.

KEY FEATURES

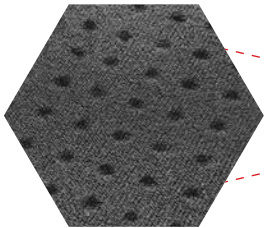
- 1.5MM AIRPRENE CONSTRUCTION - 1.5MM GLIDE SKIN AT CHEST FOR ADDED COMFORT
- 1.5MM TATEX AT KNEE FOR ABRASION RESISTANCE - HOOK AND LOOP SHOULDER CLOSURE
- FLAT-STITCHED SEAMS - KEEP-KEY POCKET

COLOR		S	M	L	XL	2XL	3XL
BK	3201-	0252	0253	0254	0255	0256	0257

FIT GUIDE PG.23



BACK VIEW



AIRPRENE CHASSIS



BLACK

BREAKER SPRING

As water conditions get warmer, you still need to keep your torso warm and insulated from splash and windchill. Our Breaker Spring Suit features 2mm neoprene construction for great flexibility and comfort while keeping the chill out.

KEY FEATURES

- 2MM NEOPRENE - FLAT-STITCHED SEAMS FOR ULTIMATE COMFORT
- 3/4 ZIPPER FOR ADDED LOWER BACK FLEX AND EASE OF ENTRY - KEEP-KEY POCKET

COLOR	S	M	L	XL	2XL	3XL
BK/CH	3210-0087	0088	0089	0090	0091	0092

FIT GUIDE PG.23



BLACK/CHARCOAL

TOUR COAT

The ideal addition for those cold days on the water or on the shore. Oversized cut allows the Tour Coat to be worn over your PFD.

FEATURES

- 2MM NEOPRENE CONSTRUCTION - HEAVY-DUTY, TWO-WAY FRONT ZIP - FLAT-STITCHED SEAMS
- 2 FRONT ZIP POCKETS WITH MESH DRAINAGE PORTS - REMOVABLE HOOD

COLOR	S/M	L/XL
BK	3270-0049	0050

FIT GUIDE PG.23



BLACK

SURGE NEO VEST

The unique segmented foam design provides multiple hinge points for greater flexibility and comfort. The Surge Neo Vest is a serious performer that offers aggressive styling for great visibility on the water.

KEY FEATURES

- U.S. COAST GUARD APPROVED TYPE 3 PFD - TWO 1.5" ADJUSTABLE BELTS WITH BUCKLE CLOSURE
- HIDDEN BACK BELTS - HEAVY-DUTY ZIPPER - "D" RING FOR CLIP STYLE LANYARDS
- SAFETY WHISTLE - TESTED AND CERTIFIED ACCORDING TO STANDARD EN ISO 12402-5 AND EN ISO 12402-6

COLOR	XS	S	M	L	XL	2XL	3XL
CH/RD	3240-0890	0891	0892	0893	0894	0895	0896
BK/CH	3240-0883	0884	0885	0886	0887	-	0889
LM/BK	3240-0793	-	-	-	-	-	-

FIT GUIDE PG.23



CHARCOAL/RED



BACK VIEW



BACK VIEW



BLACK/CHARCOAL



BACK VIEW

LIME/BLACK

HYDRO NYLON VEST

The ideal all-around vest offering exceptional performance, style and value. The Hydro Vest provides a comfortable, secure fit and is very lightweight for reduced fatigue.

KEY FEATURES

- U.S. COAST GUARD APPROVED TYPE 3 PFD - "D" RING FOR CLIP STYLE LANYARDS
- FOUR 1.5" BELTS WITH HEAVY-DUTY BUCKLES FOR SUPPORT - LIGHTWEIGHT NYLON CONSTRUCTION
- HINGED CHEST PANEL FOR BETTER FIT
- TESTED AND CERTIFIED ACCORDING TO STANDARD EN ISO 12402-5 AND EN ISO 12402-6

COLOR	S/M	L/XL	SUPER L
YL/BK 3240-	0784	0785	0807
RD/AQ 3240-	0815	0816	0817

FIT GUIDE PG.23



YELLOW/BLACK



BACK VIEW



RED/AQUA



BACK VIEW



NEON YELLOW/BLACK

IMPULSE NYLON VEST

Great value and styling in an economical package. The Impulse Vest is ideal for recreational use and offers a universal fit that's adjustable for riders of all shapes and sizes.

KEY FEATURES

U.S. COAST GUARD APPROVED TYPE 3 PFD - LIGHTWEIGHT FOAM AND NYLON CONSTRUCTION

THREE 1" BELTS WITH HEAVY-DUTY BUCKLES FOR SUPPORT - "D" RING FOR CLIP STYLE LANYARDS

SAFETY WHISTLE - TESTED AND CERTIFIED ACCORDING TO STANDARD EN ISO 12402-5 AND EN ISO 12402-6

COLOR	UNIVERSAL
NY/BK 3240-	0781

FIT GUIDE PG.23





WOMEN'S SURGE NEO VEST

The Women's Surge Neo Vest's unique segmented foam design provides greater flexibility and comfort while the pattern is cut specifically for the female figure.

KEY FEATURES

- U.S. COAST GUARD APPROVED TYPE 3 PFD - "D" RING FOR CLIP STYLE LANYARDS
- FRONT ZIP ENTRY WITH TWO 1.5" BELTS FOR ADDED STRENGTH - V-BACK FOR CUSTOM FIT
- NEOPRENE CONSTRUCTION FOR MAXIMUM COMFORT - SAFETY WHISTLE
- TESTED AND CERTIFIED ACCORDING TO STANDARD EN ISO 12402-5 AND EN ISO 12402-6

COLOR	XS	S	M	L
BK/MT	3241-0135	0136	0137	0138

FIT GUIDE PG.23



BACK VIEW

BLACK/MINT



BACK VIEW

YELLOW/BLACK

YOUTH HYDRO NYLON VEST

These vests are specifically designed for youth / child figures, comfortably allowing your youth to be in the water with you, having the same amount of fun as you.

KEY FEATURES

FITS 25 - 41 KILOGRAMS / 66 - 73 CM CHEST / U.S. COAST GUARD APPROVED TYPE 3 PFD

3-BELT CLOSURE SYSTEM / "D" RING FOR CLIP STYLE LANYARDS

TESTED AND CERTIFIED ACCORDING TO STANDARD EN ISO 12402-5 AND EN ISO 12402-6

COLOR

BK/NY 3242-0061



PET VEST

Honestly, why should humans get to have all the fun?

KEY FEATURES

THREE ADJUSTABLE BELTS WITH BUCKLE CLOSURE - CARRY HANDLE AT TOP

"D" RING FOR LEASH CONNECTION - FLO COLOR FOR HIGH VISIBILITY

COLOR

	M	L
YL/GN	3240-	0846 0847



YELLOW/GREEN

CIRCUIT GLOVE

Performance, comfort and mobility are the traits the Circuit Glove inherited from its racing heritage. The Circuit Glove provides excellent grip while retaining a tactile feel.

KEY FEATURES

- TPR HOOK AND LOOP CLOSURE - PERFORATED PALM - FLAT-STITCH SEAMS FOR COMFORT
- ANTI-SLIP GEL PRINT ON PALM AND FINGERTIPS - INNOSPAN BACKHAND FOR ULTIMATE FLEXIBILITY
- INTEGRATED NEOPRENE FINGER PADDING FOR ADDED COVERAGE

COLOR	S	M	L	XL	2XL
RD/CH 3260-	0427	0428	0429	0430	0431
BK/AQ 3260-	0433	0434	0435	0436	0437
OL/BK 3260-	0439	0440	0441	0442	0443
BK/CH 3260-	0445	0446	0447	0448	0449

FIT GUIDE PG.23

ANTI-SLIP
FINGERTIP GEL PRINT

FLAT-LOCK
STITCHING SYSTEM



PALM VIEW



RED/CHARCOAL



BLACK/AQUA



OLIVE/BLACK



BLACK/CHARCOAL

FLEX LITE GLOVE

When you want an ideal fit without all the bulk, the Flex Lite glove has got you covered. It's perforated palm, silicone print for increased grip, and barely-there feel allows for maximum control and flexibility.

KEY FEATURES

- LIGHTWEIGHT NEOPRENE CUFF WITH HOOK AND LOOP WRIST CLOSURE - 4-WAY STRETCH BACKHAND
- SUBLIMATED FADE-FREE GRAPHICS - ANTI-SLIP GEL PRINT ON FINGERTIPS FOR ADDED GRIP
- SINGLE LAYER PERFORATED PALM

COLOR		XS	S	M	L	XL	2XL
AQ/BK	3260-	0450	0451	0452	0453	0454	0455
RD/CH	3260-	0468	0469	0470	0471	0472	0473
BK/CH	3260-	0456	0457	0458	0459	0460	0461
OL/BK	3260-	0474	0475	0476	0477	0478	0479
BK	3260-	0462	0463	0464	0465	0466	0467

FIT GUIDE PG.23

ANTI-SLIP
FINGERTIP GEL PRINT



PALM VIEW



AQUA/BLACK



RED/CHARCOAL



BLACK/CHARCOAL



OLIVE/BLACK



BLACK



LIQUID RACE BOOT

Lace up the Liquid Race Boot and feel the performance. Our Liquid Race Boot exceeds the functional demands of racers and riders alike. The molded outsole provides superior traction, support, and stability that can't be found in lightweight soles.

KEY FEATURES

- INTERNAL HEEL AND ATHLETIC SOLE STRUCTURE PROVIDE STABILITY - ANTI-ABRASION HEEL AND TOE
- AIRMESH AND PERFORATED CHASSIS FOR VENTILATION AND DRAINAGE
- PULL-TABS & LACING SYSTEM FOR FAST AND EASY ON/OFF - REMOVABLE 1.5MM NEOPRENE BOOTY

COLOR		7	8	9	10	11	12
BK	3261-	0183	0184	0185	0186	0187	0188

BOOT SIZING

SIZING - MM	264.2	272.6	281.1	289.6	298	306.5
MEN	7	8	9	10	11	12
MEN - EU	40	41	42.5	44	45	46
MEN - UK	6.5	7.5	8.5	9.5	10.5	11.5



BLACK



BLACK

AMP SHOE

Lightweight and durable, the Amp Shoe will keep your feet warm and protected from the elements while providing great support.

KEY FEATURES

2MM NEOPRENE - FLAT-STITCH CONSTRUCTION FOR ADDED COMFORT - HEEL CUP FOR SUPPORT
MOLDED RUBBER SOLE - BARREL-LOCK DRAW CORD CLOSURE

COLOR		6	7	8	9	10	11	12
BK	3261-	0189	0190	0191	0192	0193	0194	0195

SHOE SIZING

SIZING - MM	225.7	264.2	272.6	281.1	289.6	298	306.5
MEN	6	7	8	9	10	11	12
MEN - EU	39	40	41	42.5	44	45	46
MEN - UK	5.5	6.5	7.5	8.5	9.5	10.5	11.5



BLACK

AMP BOOT

For those who want added coverage, the Amp Boot will keep your feet warm and protected while providing great support.

KEY FEATURES

2MM NEOPRENE - FLAT-STITCH CONSTRUCTION FOR ADDED COMFORT - HEEL CUP FOR SUPPORT
MOLDED RUBBER SOLE - REAR ZIP AND LOCKING DRAW CORD FOR A SECURE FIT

COLOR		7	8	9	10	11	12
BK	3261-	0196	0197	0198	0199	0200	0201

BOOT SIZING

SIZING - MM	264.2	272.6	281.1	289.6	298	306.5
MEN	7	8	9	10	11	12
MEN - EU	40	41	42.5	44	45	46
MEN - UK	6.5	7.5	8.5	9.5	10.5	11.5



GLIDE BOARDSHORTS

Wet or dry, on water or land, these classic trunks have got you covered.

KEY FEATURES

- 100% POLYESTER FOR DURABILITY - 4 WAY STRETCH - POCKET DRAIN EYELETS
- DRAW STRING CLOSURE AT WAIST - CARGO POCKET WITH KEY KEEPER - KNEE LENGTH SHORTS

COLOR	71	76	81	86.5	91	96.5	101.5	106.5	112
GY/AQ 3230-	0241	0242	0243	0244	0245	0246	0247	0248	0249

COLOR	28	30	32	34	36	38	40	42	44
BK/CAMO 3230-	0232	0233	0234	0235	0236	0237	0238	0239	0240



GRAY/AQUA



BACK VIEW



BLACK/CAMO



BACK VIEW



BLACK/CAMO

BACK VIEW



BLACK/CAMO

BACK VIEW

RASHGUARDS

Protect yourself from vest and wetsuit chafing while keeping your skin protected from the sun's harmful rays.

KEY FEATURES

NO RASH PATTERN DESIGN - FLAT-STITCH LYCRA CONSTRUCTION - FORM-FITTING FOR COMFORT

COLOR	XS	S	M	L	XL
BK/CAMO 3250-	0128	0129	0130	0131	0132

COLOR	XS	S	M	L	XL	2XL
BK/CAMO 3250-	0135	0136	0137	0138	0139	0140

FIT GUIDE PG.23

CASUALS

Show your support for the sport and enjoy the comfort and quality offered by these great looking tops.

KEY FEATURES

100% COTTON CONSTRUCTION - VIBRANT SCREEN PRINTED GRAPHICS

TRANSFER-STYLE NECK LABELS FOR MAXIMUM COMFORT

COLOR		S	M	L	XL	2XL
BLACK TEE	3030-	20681	20682	20683	20684	20685
HEATHER TEE	3030-	20686	20687	20688	20689	20690

COLOR		S	M	L	XL	2XL
BLACK TANK	3030-	20676	20677	20678	20679	20680



BLACK

BLACK

HEATHER GRAY

THROTTLE LEVERS

Designed to clear the grip, which allows closer mounting to bar grips and hands.

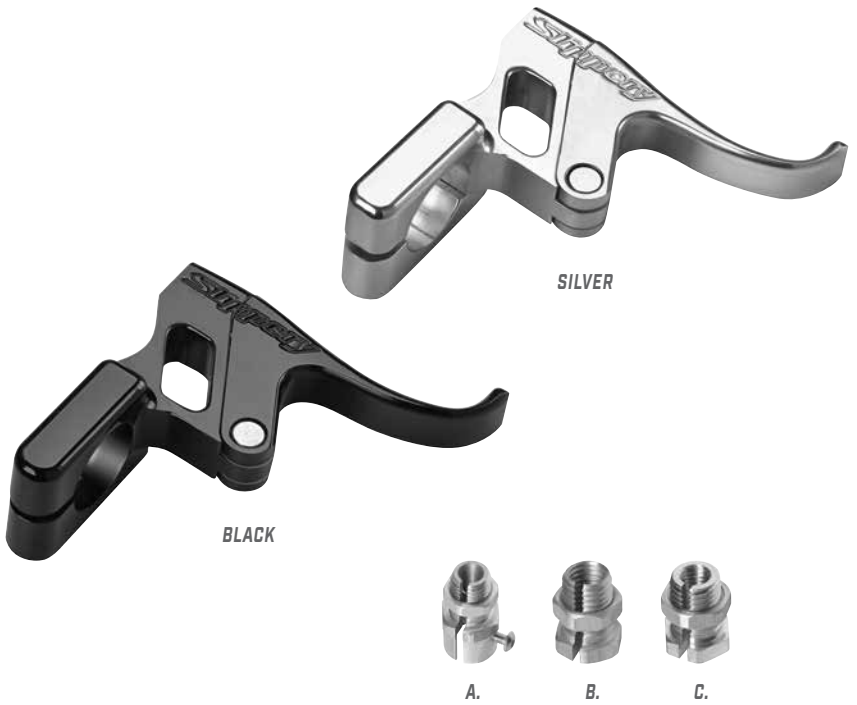
KEY FEATURES

- PRECISION CNC MACHINED FROM BILLET ALUMINUM STOCK - CONTOURS AROUND INDEX FINGER
- THREE CABLE THROW POSITIONS - NYLON CABLE SUPPORT ROLLER
- NYLON BUSHING AND THRUST WASHERS

COLOR	PART#
BLACK	0632-0614
SILVER	0632-0615

LEVER ADAPTERS

COLOR	PART#
A. SEADOO (ALL)	0632-0539
B. KAWASAKI 76-85, YAMAHA (ALL)	0632-0540
C. KAWASAKI 96-11 (EXCEPT ZXI), POLARIS (ALL)	0632-0541



STAND-UP BARS

KEY FEATURES

- HIGH GRADE ALUMINUM CONSTRUCTION IS EXTREMELY DURABLE - 7/8" DIAMETER
- 27.5" WIDE WITH KNURLED ENDS FOR EXTRA GRIP ADHESION
- 0 AND 4 DEGREE VERSIONS ARE GREAT FOR RECREATIONAL, FREESTYLE USE
- EXTENDED BARS THAT OFFER BETTER LEVERAGE AND CONTROL - CROSS BAR PAD INCLUDED

ITEM	PART#	COLOR
D. HANDLEBAR 0 DEGREE	0601-2100	SILVER
E. HANDLEBAR 0 DEGREE	0601-2101	BLACK
F. HANDLEBAR 4 DEGREE	0601-2102	SILVER
G. HANDLEBAR 4 DEGREE	0601-2103	BLACK





ACCESSORIES



STORAGE POUCH

GREAT FOR THE BEACH, JET-SKI, BOATING OR ANY WATER ACTIVITY
ADJUSTABLE NECK CORD - ZIP-LOCK - HOOK AND LOOP CLOSURES

9.52CM X 22.86CM	PART#
TRANSPARENT/WHITE	3270-0051



WHISTLE

WHISTLE	PART#
NEON YELLOW	4850-0080



KEY FLOAT

KEY FLOAT	PART#
RED	4850-0079



22" DIE-CUT DECAL

55.88CM	PART#
WHITE	4320-2454



PWC BUMPER

PWC BUMPER	PART#
WHITE	4850-0081



LANYARD

LANYARD	PART#
NEON YELLOW	4850-0078



6" DIE-CUT DECAL

15.24CM	PART#
2 PACK	4320-2456



3'x8' BANNER

0.91M X 2.44M	PART#
BLACK	9905-0050



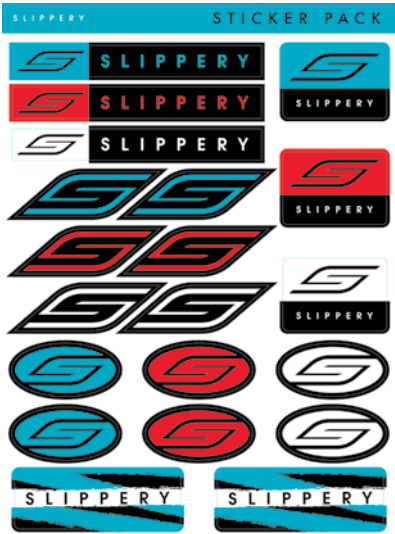
DOOR MAT

99.06CM W X 78.74CM H	PART#
BLACK - 39"W X 31"H	9905-0114



ANCHOR BAG

ANCHOR BAG	PART#
NEON YELLOW	4850-0077



STICKER PACK

	PART#
MULTI COLOR	4320-2453

FIT & SIZING GUIDE

BREAKER WETSUIT

MEN'S	S	M	L	XL	2XL	3XL
HEIGHT	5'6" - 5'9"	5'8" - 5'11"	5'10" - 6'1"	5'11" - 6'3"	6'1" - 6'4"	6'2" - 6'5"
HEIGHT - EU	167 - 175 CM	172 - 180 CM	177 - 185 CM	180 - 190 CM	185 - 193 CM	187 - 195 CM
CHEST	35" - 37"	37" - 39"	39" - 41"	41" - 43"	43" - 45"	45" - 47"
CHEST - EU	88 - 93 CM	93 - 99 CM	99 - 104 CM	104 - 109 CM	109 - 114 CM	114 - 119 CM
WEIGHT (LBS.)	120 - 140	140 - 170	170 - 190	180 - 210	200 - 225	215 - 240
WEIGHT (KG)	54 - 63	63 - 77	77 - 86	81 - 95	90 - 102	97 - 108

MEN'S SURGE VEST

MEN'S	XS	S	M	L	XL	2XL	3XL
CHEST	28" - 32"	32" - 36"	36" - 40"	40" - 44"	44" - 48"	48" - 52"	52" - 56"
CHEST - EU	71 - 81 CM	81 - 91 CM	91 - 101 CM	101 - 111 CM	111 - 121 CM	121 - 132 CM	132 - 142 CM

MEN'S HYDRO VEST

MEN'S	XS	S/M	L/XL	2XL/3XL	4XL +
CHEST	28" - 32"	32" - 40"	40" - 50"	50" - 60"	60" - 70"
CHEST - EU	71 - 81 CM	81 - 101 CM	101 - 127 CM	127 - 152 CM	152 - 177 CM

MEN'S IMPULSE VEST

MEN'S	UNIVERSAL	SUPER L
CHEST	30" - 52"	40" - 60"
CHEST - EU	76 - 132 CM	101 - 152 CM

WOMEN'S VEST

WOMEN'S	XS	S	M	L
CHEST	28" - 32"	32" - 36"	36" - 40"	40" - 44"
CHEST - EU	71 - 81 CM	81 - 91 CM	91 - 101 CM	101 - 111 CM

MEN'S RASHGUARDS

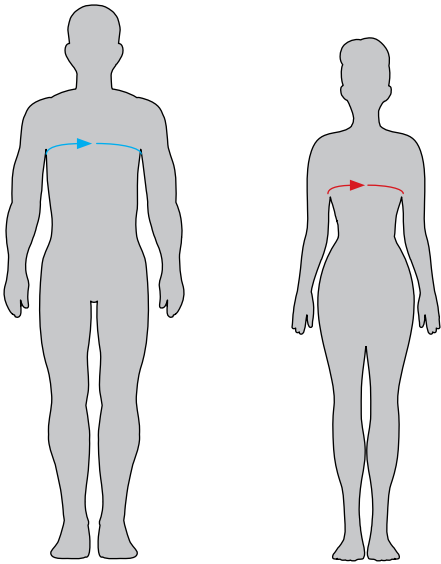
MEN'S	XS	S	M	L	XL	2XL	3XL
CHEST	30" - 32"	32" - 34"	35" - 47"	38" - 40"	41" - 43"	44" - 46"	47" - 50"
CHEST - EU	76 - 81 CM	81 - 86.5 CM	90 - 94 CM	96.5 - 101.5 CM	104 - 109 CM	112 - 117 CM	119 - 127 CM

MEN'S GLOVES

SIZING	XS	S	M	L	XL	2XL
A - WIDTH	3.6"	3.7"	3.8"	3.9"	4"	4.2"
A - WIDTH EU	9.2 CM	9.5CM	9.8CM	10.1CM	10.4CM	10.7CM
B - LENGTH	8.1"	8.3"	8.6"	8.9"	9.1"	9.4"
B - LENGTH EU	20.7CM	21.3CM	22CM	22.7CM	23.3CM	24CM

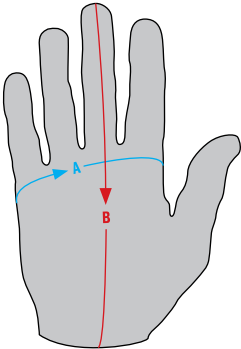
PET VEST

VEST SIZE	WEIGHT [LBS.]	WEIGHT [KG]	NECK - USA	NECK - EU	CHEST - USA	CHEST - EU	WAIST - USA	WAIST - EU
XX-SMALL	LESS THAN 8 LBS.	LESS THAN 3.6 KG	LESS THAN 10"	LESS THAN 25 CM	LESS THAN 18"	LESS THAN 45 CM	LESS THAN 14"	LESS THAN 35 CM
X-SMALL	8 - 15 LBS.	3.6 - 6.8 KG	10" - 13"	25 - 33 CM	18" - 24"	45 - 60 CM	14" - 20"	35 - 50 CM
SMALL	15 - 30 LBS.	6.8 - 13 KG	12" - 16"	30 - 40 CM	22" - 28"	55 - 71 CM	18" - 24"	45 - 60 CM
MEDIUM	30 - 60 LBS.	13 - 27 KG	15" - 19"	38 - 48 CM	26" - 32"	66 - 81 CM	22" - 28"	55 - 71 CM
LARGE	60 - 80 LBS.	27 - 36 KG	18" - 22"	45 - 55 CM	30" - 38"	76 - 96 CM	26" - 32"	66 - 81 CM
X-LARGE	80 LBS. AND OVER	36 KG AND OVER	18" - 24"	45 - 60 CM	30" - 42"	76 - 106 CM	26" - 36"	66 - 91 CM



HOW TO MEASURE CHEST:

MEASURE AROUND FULLEST PART OF CHEST UNDER ARMS FOR TOTAL CHEST CIRCUMFERENCE.



HOW TO MEASURE HAND:

A - WIDTH

MEASURE ACROSS YOUR HAND AT THE WIDEST POINT (GENERALLY JUST BELOW THE KNUCKLES).

B - LENGTH

MEASURE FROM THE TIP OF YOUR MIDDLE FINGER TO THE BOTTOM OF THE PALM.

*SIZE CHARTS ARE FOR REFERENCE ONLY.

TO ENSURE PROPER FIT ALWAYS TRY ON PRODUCT WHEN POSSIBLE.



IMPROPERLY FITTING PRODUCTS COULD CONTRIBUTE TO SERIOUS INJURY OR DEATH.



S L I P P E R Y

WWW.SLIPPERYWETSUITS.COM

Specifications and prices subject to change without notice. Slippery is a registered trademark. All rights reserved. ©2022 Slippery. Reproduction of this catalog without written permission is prohibited.

**PARTS
EUROPE**

SLIPPERY PRODUCTS ARE AVAILABLE ONLY AT
YOUR AUTHORIZED PARTS EUROPE DEALER.

