

INDIAN® | FTR 1200





Rearsets (adjustable)

These RCT10GT rearsets offer various footpeg positions thanks to the rotating and easy to use mechanism. Choose between comfortable and sporty driving position according to your personal needs. Adjustable toe pieces on brake and gear lever are adjustable and thus offer a perfect ergonomic fit.

Highest quality, perfect fit and highest possible weight reduction thanks to precise CNC manufacturing. Standard or GP shifting is possible.

DETAILS:

- 10 different footpeg positions
- max. 16 mm higher or 9 mm lower as stock
- adjustable max. 16 mm forwards or 24 mm backwards

Part #: ■ **1623-0533**



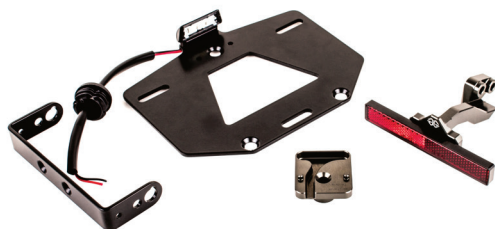
HANDLEBAR RISERS (adjustable)

The revolutionary 2DGT handlebar risers help you to find your perfect handlebar position. Move them up and down, forward and backward. 2DGT handlebar risers give you still unseen adjustability and styling. Incline of speedometer offers stepless adjustment.

DETAILS:

- Forward and backward adjustable (7 mm in each direction)
- 6 mm higher than stock
- Incl. speedometer support with stepless adjustment

Part #: ■ **0602-1093**



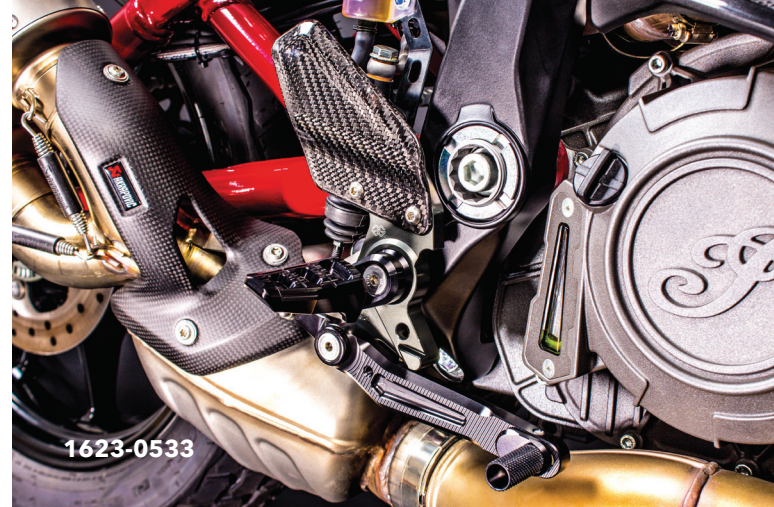
License plate holder

This license plate holder allows to relocate the original indicators under the tail. The plate holder keeps the original position, but is smaller as the original one and therefore adapts perfectly to the design of the Indian.

DETAILS:

- Holder is made of highest quality aluminum and adapted sheet metal parts
- Including E-approved LED license plate light
- Includes E-approved mini-reflectors incl. bracket for using only the original indicators
- Including wiring and mounting material
- License plate bracket designed for EU, US and JP license plates
- All regulations are complied with this conversion
- Original splash guard can be either mounted or removed

Part #: ■ **2030-1500**





Brake and clutch levers (adjustable)

A clear design meets the optimum handle length and shape for all applications. Double ball bearings instead of plain bearing bushings make the foldable MPL superior to other hand levers regarding precision and response characteristics.

The lever position can be regulated in five steps by a very precise and smooth working adjuster.

Part #: ■ **0613-1280** (Brake lever) ■ **0613-1884** (Clutch lever)

Rear stand hook kit

These stand hoods are mounted at the swing arm thread and an additional clamping screw. The hooks are made of gray anodized aluminum.

Part #: ■ **1303-0325**



Chain adjuster stand bolt set

Optional matching stand bolts for lifters with rotating plastic rollers. Facilitate lifting the bike and protect surfaces from damage.

Part #: ■ **4101-0401** (10 mm) ■ **4101-0402** (12 mm) ■ **4101-0403** (20 mm)



Brake and clutch lever guards

Our brake and clutch lever guards are one of our amendments to the racing and performance driven product line-up. Off the race track you will also experience them as a safety plus.

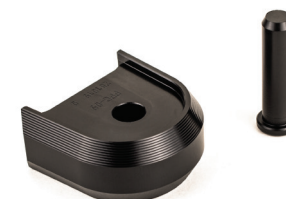
The main body is CNC made of high-end billet aluminum, the protecting piece is made of resistant plastic. Due to that mixture of materials the protectors achieve best performances in stability and flexibility where it is needed.

Part #: ■ **0615-0299** (Brake) ■ **0615-0300** (Clutch)

Passenger footpeg cover

Our style parts combine great appearance and style with utility. These covers protect from dirt and debris and also improve the look of the bike.

Part #: ■ **1620-2061**



Handlebar

Our conical handlebar (clamp diameter 28,6 mm, 755 mm wide, 86 mm high, 94 mm rearward bent in a 24 degree angle, 140 mm clamping width) scores with high rigidity and great look thanks to the high quality anodized surface.

Part #: ■ **0601-3145** ■ **0601-3146**



Crash pads

Unique distinctive design, made of aluminum. Additionally, a cover for the original rear axle nut helps for a clear look.

Part #: ■ **1231-1050** (front axle) ■ **1231-1051** (rear axle)

Top yoke nut

With its patented pin-interlock system the ACMA top yoke nut gives a finishing touch to every top yoke. Anodized in four different colors, it crests your steering central and catches every eye.

Part #: ■ **0410-0273** ■ **0410-0274** ■ **0410-0276**



Brake reservoir cover (front)

This brake reservoir cover is made of CNC machined aluminum is quick and easy to install and gives the bike a much better look. The special feature are the four colored inserts which can be installed to own preferences.

Part #: ■ **0602-0886**

Handlebar weights

Our handlebar weights reduce handlebar vibrations to a minimum and the closed screw head cover protects from debris and humidity. The weights are CNC machined and have an anodized surface.

Part #: Type „Cone“ ■ **0634-0376** ■ **0634-0377** ■ **0634-0378** ■ **0634-0380** Type „IP“ ■ **0634-0381** ■ **0634-0382** ■ **0634-0383** ■ **0634-0385**



Paddock stand adapter

Light weight rolling paddock stand adapter to ease bike lifting. Chamfer on both sides to enable safe and easy fitment of fork style stands, while at the same time protecting the swing arm. Adapter rollers are produced from wear resistant POM. Including screw cover in the unique distinctive GILLES.TOOLING Design. This part is used as an alternative to rear stand adapter 1303-0325.

Part #: ■ **1303-0266**

Distributed by:

PARTS
EUROPE
www.partseurope.eu

Parts Europe GmbH
Conrad-Röntgen-Straße 2
54332 Wasserliesch/Trier (Germany)

Phone: +49 (0) 6501 9695 - 2000
Fax: +49 (0) 6501 9695 - 2650
E-Mail: sales@partseurope.eu

